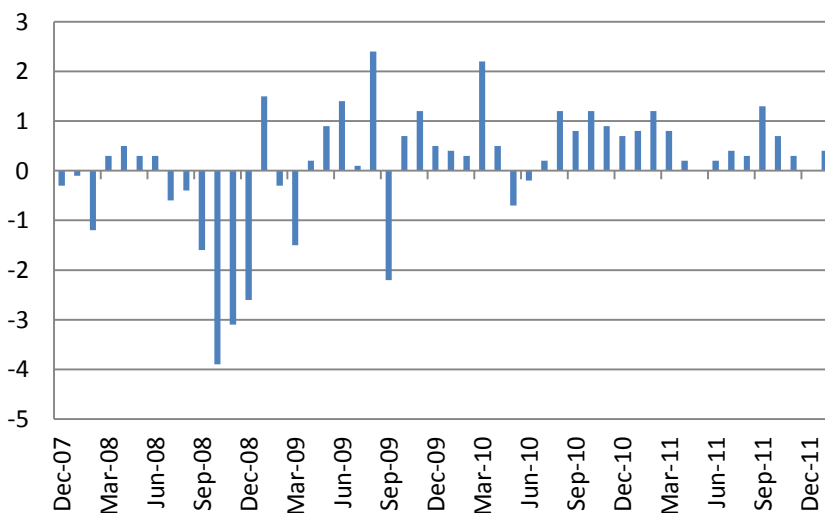


## Ежедневный обзор мирового рынка акций

15 февраля 2012 г.

На биржах США в понедельник преобладал рост котировок. Индекс S&P по итогам дня потерял 0.09%, индекс Russell – 0.5%. Лучше рынка были акции потребительского нециклического сектора (+0.36%), в аутсайдерах - акции финансового сектора (-1.06%). Индекс CBOE put/call повысился до 1.51. Разница по волатильности между опционами 90 и 110% выросла до 11.03 п.

Негативная динамика американского рынка акций в первые часы торгов была обусловлена не слишком хорошими данными по динамике розничных продаж за январь. Индикатор вырос лишь на 0.4% против прогноза 0.8%.



В целом, из 344 компаний индекса S&P500, представивших отчетность за IV квартал, прибыль 240 и выручка 100 оказалась выше ожиданий. В 235 случаях наблюдался рост прибыли на акцию. В Европе из 130 компаний прибыль 62 превысила ожидания аналитиков, 69 – разочаровала. Рост наблюдался лишь в 68 случаях.

Решение китайских властей расширить покупки европейских облигаций добавило оптимизма на рынки Азии.

Hang Seng на 10:00 прибавил 2.1%, корейский KOSPI – 1.13%. Японский Nikkei на 9:50 мск повысился на 2.3%. Австралийский S&P/ASX 200 потерял 0.25%. Индексы шанхайской биржи повысились в пределах 1.2%.

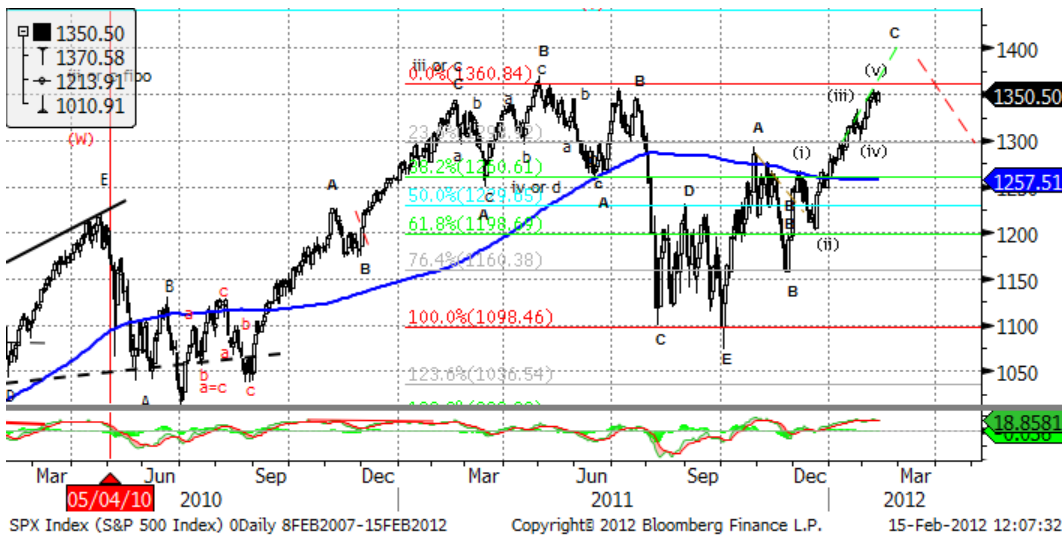
Основные индикаторы рынка		
CDS HY 5Y	575.54	+2.11%
ITX Crossover Euro	399.49	+2.49%
CDS Japan 5Y	129.13	+1.81%
CDS EM 5Y	110.68	-0.06%
CDS Russia 5Y	217.04	-0.89%
US Tsys 10Y	2.46%	-0.21%
US Tsys 5Y	1.16%	-0.09%
Brazil 10Y	2.75%	-0.18%
Germany 10Y	1.44%	+0.18%
EUR/USD	1.3171	+0.40%
USD/JPY	78.47	-0.06%
EUR/GBP	0.8375	-0.08%
Oil Brent	118.07	+0.61%
Gold	1728	+0.60%
Copper	8415	-0.12%
Nickel	20061	-1.94%
S&P 500	1355.5	+0.58%
Russell 2000	820.65	-0.50%
Bovespa	65038.53	-0.99%
Topix	805.5	+2.35%
Shanghai Comp	2,369.73	+1.06%
S&P/ASX 300	4,253.40	+0.25%
Sensex 30	18,119.33	+1.52%
Bovespa	65,038.53	-0.99%
DJ Euro Stoxx 50 Fu	2489	+0.08%
CAC Futures	3375	-0.22%
DAX Futures	6732.5	+0.01%
CBOE Put/Call	0.61	+15.09%
CBOE Buy/Write M	882.73	+0.03%
VIX	19.54	+2.63%
VSTOXX	26.0202	-2.19%

\*На 10:00 мск, по данным Bloomberg

Сегодня в Европе интерес будут представлять данные по динамике ВВП в 4 квартале. В США выйдет индекс активности в производстве ФРБ Нью-Йорка за февраль и данные по промпроизводству за январь. Кроме того, выйдут стенограммы заседания ФРС 24-25 января.

Продолжится сезон отчетности – опубликуют финансовые отчеты 16 корпораций индекса S&P 500 и 16 компаний индекса DJ Stoxx 600.

С технической точки зрения основные индексы находятся вблизи уровней сопротивления. Временной анализ циклов сигнализирует о возможном начале коррекции по индексу S&P 500 в ближайшие 1-2 недели. С позиции волнового анализа, начавшееся 28.11.2011 года движение подходит к концу. Ориентиры возможной коррекции находятся в районе 1300 п. Тем не менее, если в течение 2 недель коррекция будет носить плоский характер, в случае продолжения роста котировок уровни сопротивления будут находиться в районе 1400 п.



Eurostoxx x 600		
SX3P	388.21	+1.73%
SX4P	573.95	+1.93%
SX6P	263.77	+0.32%
SX7P	158.15	+3.88%
SX86P	111.46	+0.66%
SX8P	201.8	+0.89%
SXAP	341.47	+4.67%
SXDP	435.83	+1.37%
SXEP	353.63	+1.64%
SXFP	237.13	+1.05%
SXIP	153.82	+0.88%
SXKP	249.25	+1.12%
SXMP	167.63	+0.11%
SXNP	306.54	+0.69%
SXOP	254.55	+1.13%
SXPP	524.79	-2.06%
SXQP	450.23	+0.73%
SXRP	246.78	+0.95%
SXTP	121.88	+1.25%
SXXP	263.64	+1.36%

Наиболее активные акции в Европе

PIRAEUS BANK	0.571	-12.02%
VESTAS WIND SY	59.45	-10.94%
HOMESERVE PLC	245.3	-10.80%
TEMENOS GROU	17.25	-10.39%
MOBISTAR SA	36.4	-9.87%
TRYG A/S	299.7	-7.95%
ALPHA BANK A.E	1.6	-6.98%
SECURITAS AB-B	61.85	-6.36%
JYSKE BANK-REG	203.4	+8.19%
NEXANS SA	52.61	+10.75%
COMMERZBANK	2.171	+11.16%
BANCO ESPIRITO	1.645	+11.30%
NOKIAN RENKAA	33.6	+13.48%
PUBLIC POWER	4.2	+14.13%
WACKER CHEMI	91	+16.19%

## Ежедневный обзор

Календарь макроэкономической статистики*						
Date Time		Event		Survey	Prior	Revised
02/13/2012	US	Volicker Rule Comments				
02/13/2012 07:00	GE	Wholesale Price Index (MoM)	JAN	--	0.00%	--
02/13/2012 07:00	GE	Wholesale price Index (YoY)	JAN	--	3.00%	--
02/13/2012 16:00	US	U.S. Fed to Purchase USD1.5-2 Bln				
02/14/2012	JN	BOJ Target Rate	14-Feb	0.10%	0.10%	--
02/14/2012 02:45	US	Fed's Williams Speaks in				
02/14/2012 09:30	UK	CPI (MoM)	JAN	-0.50%	0.40%	--
02/14/2012 09:30	UK	CPI (YoY)	JAN	3.60%	4.20%	--
02/14/2012 09:30	UK	Core CPI YOY	JAN	2.60%	3.00%	--
02/14/2012 09:30	UK	Retail Price Index	JAN	238.4	239.4	--
02/14/2012 09:30	UK	RPI (MoM)	JAN	-0.40%	0.40%	--
02/14/2012 09:30	UK	RPI (YoY)	JAN	4.10%	4.80%	--
02/14/2012 09:30	UK	RPI Ex Mort Int.Payments (YoY)	JAN	4.20%	5.00%	--
02/14/2012 10:00	EC	Euro-Zone Ind. Prod. wda (YoY)	DEC	-1.20%	-0.30%	0.10%
02/14/2012 10:00	EC	Euro-Zone Ind. Prod. sa (MoM)	DEC	-1.20%	-0.10%	0.00%
02/14/2012 10:00	EC	ZEW Survey (Econ. Sentiment)	FEB	--	-32.5	--
02/14/2012 10:00	GE	Zew Survey (Current Situation)	FEB	30.5	28.4	--
02/14/2012 10:00	GE	ZEW Survey (Econ. Sentiment)	FEB	-11.8	-21.6	--
02/14/2012 12:30	US	NFIB Small Business Optimism	JAN	95	93.8	--
02/14/2012 13:30	US	Import Price Index (MoM)	JAN	0.30%	-0.10%	--
02/14/2012 13:30	US	Import Price Index (YoY)	JAN	7.20%	8.50%	--
02/14/2012 13:30	US	Advance Retail Sales	JAN	0.80%	0.10%	--
02/14/2012 13:30	US	Retail Sales Less Autos	JAN	0.50%	-0.20%	--
02/14/2012 13:30	US	Retail Sales Ex Auto & Gas	JAN	0.50%	0.00%	--
02/14/2012 13:30	US	Retail Sales "Control Group"	JAN	0.40%	--	--
02/14/2012 13:45	US	Fed's Plosser Speaks on Economy				
02/14/2012 15:00	US	Business Inventories	DEC	0.40%	0.30%	--
02/14/2012 16:00	US	U.S. Fed to Purchase USD4.25-5 Bln				
02/14/2012 21:30	US	API U.S. Crude Oil Inventories	10-Feb	--	-4533K	--
02/14/2012 21:30	US	API Cushing Crude OK Inventory	10-Feb	--	385K	--
02/14/2012 21:30	US	API U.S. Distillate Inventory	10-Feb	--	386K	--
02/14/2012 21:30	US	API U.S. Gasoline Inventories	10-Feb	--	4429K	--
02/15/2012 07:00	GE	GDP nsa (YoY)	4Q A	1.80%	2.50%	--
02/15/2012 07:00	GE	GDP s.a. (QOQ)	4Q A	-0.30%	0.50%	--
02/15/2012 07:00	GE	GDP wda (YoY)	4Q A	1.90%	2.60%	--
02/15/2012 09:30	UK	Claimant Count Rate	JAN	5.00%	5.00%	--
02/15/2012 09:30	UK	Jobless Claims Change	JAN	3.0K	1.2K	--

Подиндекс		Изм.
S&P 500		
CONS DISCRET	336.75	+0.59%
CONS STAPLES	337.65	+0.88%
ENERGY	548.53	-0.64%
FINANCIALS	195.77	-0.74%
HEALTH CARE	418.20	+0.09%
INDUSTRIALS	321.25	+0.30%
INFO TECH	461.96	+1.76%
MATERIALS	232.03	-2.46%
TELECOM SERV	127.17	+0.06%
UTILITIES	176.40	-0.53%

Наиболее активные акции в США*		
DUN & BRADSTREET	79.52	-0.87%
LEGGETT & PLATT	21.77	-1.05%
SYSCO CORP	29.54	+0.61%
FEDERATED INV-B	17.71	-1.77%
MEDCO HEALTH SOL	60.49	-0.21%
FRONTIER COMMUN	4.14	-3.72%
HUMANA INC	85.16	-1.17%
UNUM GROUP	22.5	-1.14%
ST JUDE MEDICAL	42.93	-1.13%
LEUCADIA NATL	29.42	+0.20%
LEGG MASON INC	27.29	+0.74%
F5 NETWORKS	125.8	-0.51%
EMERSON ELEC CO	52.74	+1.58%
STANLEY BLACK &	75.4	+1.40%
PEABODY ENERGY	37.04	-0.99%

## Ежедневный обзор

02/15/2012 10:00	EC	Euro-Zone GDP s.a. (QoQ)	4Q A	-0.40%	0.20%	0.10%
02/15/2012 10:00	EC	Euro-Zone GDP s.a. (YoY)	4Q A	0.70%	1.40%	1.30%
02/15/2012 10:00	EC	Euro-Zone Trade Balance sa	DEC	4.5B	6.1B	--
02/15/2012 10:00	EC	Euro-Zone Trade Balance	DEC	3.5B	6.9B	--
02/15/2012 12:00	US	MBA Mortgage Applications	10-Feb	--	7.50%	--
02/15/2012 13:30	US	Empire Manufacturing	FEB	14.8	13.48	--
02/15/2012 14:00	US	Total Net TIC Flows	DEC	--	\$48.6B	--
02/15/2012 14:00	US	Net Long-term TIC Flows	DEC	\$35.0B	\$59.8B	--
02/15/2012 14:15	US	Industrial Production	JAN	0.60%	0.40%	--
02/15/2012 14:15	US	Capacity Utilization	JAN	78.60%	78.10%	--
02/15/2012 15:00	US	NAHB Housing Market Index	FEB	26	25	--
02/15/2012 15:30	US	DOE U.S. Crude Oil Inventories	10-Feb	--	304K	--
02/15/2012 15:30	US	DOE Cushing OK Crude Inventory	10-Feb	--	367K	--
02/15/2012 15:30	US	DOE U.S. Distillate Inventory	10-Feb	--	1174K	--
02/15/2012 15:30	US	DOE U.S. Gasoline Inventories	10-Feb	--	1629K	--
02/15/2012 15:30	US	DOE U.S. Refinery Utilization	10-Feb	--	1.00%	--
02/15/2012 15:30	US	DOE Crude Oil Implied Demand	10-Feb	--	14133	--
02/15/2012 15:30	US	DOE Distillate Implied Demand	10-Feb	--	4432.3	--
02/15/2012 15:30	US	DOE Gasoline Implied Demand	10-Feb	--	8664.6	--
02/15/2012 16:00	US	U.S. Fed to Sell USD8-8.75 Bln				
02/15/2012 19:00	US	Minutes of FOMC Meeting				
02/15/2012 19:00	US	Fed Releases Minutes From Jan.				
02/16/2012 07:00	EC	EU 25 New Car Registrations	JAN	--	-6.40%	--
02/16/2012 13:30	US	Continuing Claims	4-Feb	3490K	--	--
02/16/2012 13:30	US	Initial Jobless Claims	11-Feb	365K	--	--
02/16/2012 13:30	US	Producer Price Index (MoM)	JAN	0.40%	-0.10%	--
02/16/2012 13:30	US	PPI Ex Food & Energy (MoM)	JAN	0.20%	0.30%	--
02/16/2012 13:30	US	Producer Price Index (YoY)	JAN	4.10%	4.80%	--
02/16/2012 13:30	US	PPI Ex Food & Energy (YoY)	JAN	2.70%	3.00%	--
02/16/2012 13:30	US	Housing Starts	JAN	671K	657K	--
02/16/2012 13:30	US	Housing Starts MOM%	JAN	2.10%	-4.10%	--
02/16/2012 13:30	US	Building Permits	JAN	680K	679K	671K
02/16/2012 13:30	US	Building Permits MOM%	JAN	1.30%	-0.10%	--
02/16/2012 14:45	US	Bloomberg Consumer Comfort	12-Feb	--	-41.7	--
02/16/2012 14:45	US	Bloomberg Economic Expectations	FEB	--	-19	--
02/16/2012 15:00	US	Mortgage Delinquencies	4Q	--	7.99%	--
02/16/2012 15:00	US	MBA Mortgage Foreclosures	4Q	--	4.43%	--
02/16/2012 15:00	US	Philadelphia Fed.	FEB	9	7.3	--
02/16/2012 15:30	US	EIA Natural Gas Storage Change	10-Feb	--	-78	--
02/16/2012 16:00	US	U.S. Fed to Purchase USD1.5-2 Bln				
02/16/2012 18:00	US	U.S. to Sell USD9 Bln 30-Year TIPS				
02/17/2012 07:00	GE	Producer Prices (MoM)	JAN	0.30%	-0.40%	--
02/17/2012 07:00	GE	Producer Prices (YoY)	JAN	3.20%	4.00%	--

## Ежедневный обзор

02/17/2012 09:00	EC	Euro-Zone Current Account nsa	DEC	--	1.0B	--
02/17/2012 09:00	EC	ECB Euro-Zone Current Account SA	DEC	--	-1.8B	--
02/17/2012 09:30	UK	Retail Sales Ex Auto Fuel(MoM)	JAN	-0.30%	0.60%	--
02/17/2012 09:30	UK	Retail Sales Ex Auto Fuel(YoY)	JAN	-0.10%	1.70%	--
02/17/2012 09:30	UK	Retail Sales w/Auto Fuel (MoM)	JAN	-0.30%	0.60%	--
02/17/2012 09:30	UK	Retail Sales w/Auto Fuel (YoY)	JAN	0.50%	2.60%	--
02/17/2012 10:00	EC	Construction Output SA MoM	DEC	--	0.80%	--
02/17/2012 10:00	EC	Construction Output WDA YoY	DEC	--	0.20%	--
02/17/2012 13:30	US	Consumer Price Index (MoM)	JAN	0.30%	0.00%	--
02/17/2012 13:30	US	CPI Ex Food & Energy (MoM)	JAN	0.20%	0.10%	--
02/17/2012 13:30	US	Consumer Price Index (YoY)	JAN	2.80%	3.00%	--
02/17/2012 13:30	US	CPI Ex Food & Energy (YoY)	JAN	2.20%	2.20%	--
02/17/2012 13:30	US	Consumer Price Index NSA	JAN	226.57	225.672	--
02/17/2012 13:30	US	CPI Core Index SA	JAN	--	227.166	--
02/17/2012 15:00	US	Leading Indicators	JAN	0.50%	0.40%	--
02/17/2012 18:00	US	Baker Hughes U.S. Rig Count	17-Feb	--	1989	--
02/21/2012 04:30	JN	All Industry Activity Index (MoM)	DEC	--	-1.10%	--
02/21/2012 09:30	UK	Public Finances (PSNCR)	JAN	--	22.9B	--
02/21/2012 09:30	UK	PSNB ex Interventions	JAN	--	13.7B	--
02/21/2012 09:30	UK	Public Sector Net Borrowing	JAN	--	10.8B	--
02/21/2012 13:30	US	Chicago Fed Nat Activity Index	JAN	--	0.17	--
02/21/2012 15:00	EC	Euro-Zone Consumer Confidence	FEB A	--	-20.7	--
02/22/2012 08:30	GE	PMI Manufacturing	FEB A	--	51	--
02/22/2012 08:30	GE	PMI Services	FEB A	--	53.7	--
02/22/2012 09:00	EC	PMI Composite	FEB A	--	50.4	--
02/22/2012 09:00	EC	PMI Manufacturing	FEB A	--	48.8	--
02/22/2012 09:00	EC	PMI Services	FEB A	--	50.4	--
02/22/2012 10:00	EC	Industrial New Orders NSA (YoY)	DEC	--	-2.70%	--
02/22/2012 10:00	EC	Industrial New Orders SA (MoM)	DEC	--	-1.30%	-1.20%
02/22/2012 12:00	US	MBA Mortgage Applications	17-Feb	--	--	--
02/22/2012 15:00	US	Existing Home Sales	JAN	4.65M	4.61M	--
02/22/2012 15:00	US	Existing Home Sales MoM	JAN	1.00%	5.00%	--
02/22/2012 16:00	US	U.S. Fed to Purchase USD1.5-2 Bln				
02/22/2012 18:00	US	U.S. to Sell 5-Year Notes				
02/22/2012 21:30	US	API U.S. Crude Oil Inventories	17-Feb	--	--	--
02/22/2012 21:30	US	API Cushing Crude OK Inventory	17-Feb	--	--	--
02/22/2012 21:30	US	API U.S. Distillate Inventory	17-Feb	--	--	--
02/22/2012 21:30	US	API U.S. Gasoline Inventories	17-Feb	--	4429K	--
02/23/2012 09:00	GE	IFO - Business Climate	FEB	--	108.3	--
02/23/2012 09:00	GE	IFO - Current Assessment	FEB	--	116.3	--
02/23/2012 09:00	GE	IFO - Expectations	FEB	--	100.9	--
02/23/2012 09:30	UK	BBA Loans for House Purchase	JAN	--	36171	--
02/23/2012 13:30	US	Continuing Claims	11-Feb	--	--	--

## Ежедневный обзор

02/23/2012 13:30	US	Initial Jobless Claims	18-Feb	--	--	--
02/23/2012 14:45	US	Bloomberg Consumer Comfort	19-Feb	--	--	--
02/23/2012 15:00	US	House Price Purchase Index QoQ	4Q	--	0.20%	--
02/23/2012 15:00	US	House Price Index MoM	DEC	--	1.00%	--
02/23/2012 15:30	US	EIA Natural Gas Storage Change	17-Feb	--	--	--
02/23/2012 16:00	US	DOE U.S. Crude Oil Inventories	17-Feb	--	--	--
02/23/2012 16:00	US	DOE Cushing OK Crude Inventory	17-Feb	--	--	--
02/23/2012 16:00	US	DOE U.S. Distillate Inventory	17-Feb	--	--	--
02/23/2012 16:00	US	DOE U.S. Gasoline Inventories	17-Feb	--	--	--
02/23/2012 16:00	US	DOE U.S. Refinery Utilization	17-Feb	--	--	--
02/23/2012 16:00	US	DOE Crude Oil Implied Demand	17-Feb	--	--	--
02/23/2012 16:00	US	DOE Distillate Implied Demand	17-Feb	--	--	--
02/23/2012 16:00	US	DOE Gasoline Implied Demand	17-Feb	--	--	--
02/23/2012 16:00	US	Kansas City Fed Manf. Activity	FEB	--	7	--
02/23/2012 16:00	US	U.S. Fed to Sell USD8-8.75 Bln				
02/23/2012 18:00	US	U.S. to Sell 7-Year Notes				
02/24/2012 07:00	GE	Domestic Demand	4Q	--	0.40%	--
02/24/2012 07:00	GE	Exports	4Q	--	2.50%	--
02/24/2012 07:00	GE	Capital Investment	4Q	--	0.90%	--
02/24/2012 07:00	GE	Government Spending	4Q	--	0.60%	--
02/24/2012 07:00	GE	Construction Investment	4Q	--	-0.70%	--
02/24/2012 07:00	GE	Imports	4Q	--	2.60%	--
02/24/2012 07:00	GE	Private Consumption	4Q	--	0.80%	--
02/24/2012 07:00	GE	GDP nsa (YoY)	4Q P	--	--	--
02/24/2012 07:00	GE	GDP s.a. (QOQ)	4Q P	--	--	--
02/24/2012 07:00	GE	GDP wda (YoY)	4Q P	--	--	--
02/24/2012 09:30	UK	GDP (QoQ)	4Q P	--	-0.20%	--
02/24/2012 09:30	UK	GDP (YoY)	4Q P	--	0.80%	--
02/24/2012 14:55	US	U. of Michigan Confidence	FEB F	--	72.5	--
02/24/2012 15:00	US	New Home Sales	JAN	313K	307K	--
02/24/2012 15:00	US	New Home Sales MoM	JAN	2.00%	-2.20%	--
02/24/2012 15:45	US	Fed's Williams Speaks in New York				
02/24/2012 16:00	US	U.S. Fed to Purchase USD1.5-2 Bln				
02/24/2012 16:35	US	Fed's Bullard Speaks on Housing,				
02/24/2012 18:00	US	Baker Hughes U.S. Rig Count	24-Feb	--	--	--
02/24/2012 18:30	US	Fed's Plosser Speaks on Monetary				
02/24/2012 18:30	US	Fed's Dudley to Speak on				
02/27/2012 09:00	EC	Euro-Zone M3 s.a. 3 mth ave.	JAN	--	2.10%	--
02/27/2012 09:00	EC	Euro-Zone M3 s.a. (YoY)	JAN	--	1.60%	--
02/27/2012 14:30	EC	ECB Announces Bond Purchases				
02/27/2012 15:00	US	Pending Home Sales MoM	JAN	--	-3.50%	--
02/27/2012 15:00	US	Pending Home Sales YoY	JAN	--	4.40%	--
02/27/2012 15:30	US	Dallas Fed Manf. Activity	FEB	--	15.3	--

## Ежедневный обзор

02/27/2012 16:00	US	U.S. Fed to Purchase USD4.25-5 Bln				
02/27/2012 17:30	GE	ECB's Asmussen at Berlin Podium				
14-18 FEB	CH	Actual FDI (YoY)	JAN	--	-12.70%	--
15-22 FEB	UK	Nationwide Consumer Confidence	JAN	40	38	--
22-25 FEB	CH	HSBC Flash China Manufacturing	FEB	--	48.8	--
24-25 FEB	GE	G-20 2nd Meeting of Vice				
24-29 FEB	GE	Import Price Index (MoM)	JAN	--	0.30%	--
24-29 FEB	GE	Import Price Index (YoY)	JAN	--	3.90%	--
25-26 FEB	GE	G-20 FINANCE MINISTERS AND				
27-29 FEB	CH	Leading Index	JAN	--	100.18	--

## Календарь отчетности, Европа\*

Компания	Тиккер	Дата	Время	Факт	Консенсус	Оptionные ожидания колебания
Wereldhave NV	WHA NA	2/13/2012	Bef-mkt	Y 2011	4.978	1.24
Bilfinger Berger SE	GBF GR	2/13/2012	6:30	Y 2011	4.982	3.02
L'Oreal SA	OR FP	2/13/2012	Aft-mkt	Y 2011	4.246	3.04
Bankia SA	BKIA SM	2/13/2012		Q4 2011	0.02	-
Saipem SpA	SPM IM	2/13/2012		Y 2011	2.063	1.53
Deutsche Boerse AG	DB1 GR	2/13/2012		Y 2011	4.583	3.79
Telecity Group PLC	TCY LN	2/13/2012		Y 2011	0.239	-
Snam Rete Gas SpA	SRG IM	2/14/2012	Bef-mkt	Y 2011	0.27	2.11
Actelion Ltd	ATLN VX	2/14/2012	6:00	Y 2011	2.955	-
Swedbank AB	SWEDA SS	2/14/2012	6:00	Y 2011	11.411	3.72
Storebrand ASA	STB NO	2/14/2012	6:30	Y 2011	3.3	-
Intercontinental Hotels Group PLC	IHG LN	2/14/2012	7:00	Y 2011	1.187	-
MAN SE	MAN GR	2/14/2012	7:00	Y 2011	7.05	1.26
Metropole Television SA	MMT FP	2/14/2012	Aft-mkt	Y 2011	1.175	2.56
Aurubis AG	NDA GR	2/14/2012		Q1 2012		2.78
ThyssenKrupp AG	TKA GR	2/14/2012		Q1 2012	-0.03	3.16
Peugeot SA	UG FP	2/15/2012	Bef-mkt	Y 2011	3.017	6.96

## Ежедневный обзор

Svenska Handelsbanken AB	SHBA SS	2/15/2012	6:00	Y 2011	19.434	2.56
Clariant AG	CLN VX	2/15/2012	6:00	Y 2011	1.229	-
Heineken Holding NV	HEIO NA	2/15/2012	6:00	Y 2011	2.69	-
BNP Paribas SA	BNP FP	2/15/2012	6:00	Y 2011	5.276	4.75
Heineken NV	HEIA NA	2/15/2012	6:00	Y 2011	2.575	3.22
Danone	BN FP	2/15/2012	6:30	Y 2011	2.926	2.86
Swisscom AG	SCMN VX	2/15/2012	6:30	Y 2011	37.788	-
Coca Cola Hellenic Bottling Co SA	EEEE GA	2/15/2012	6:30	Y 2011	0.923	-
Trelleborg AB	TRELB SS	2/15/2012	6:45	Y 2011	6.601	4.28
ENI SpA	ENI IM	2/15/2012	6:45	Y 2011	1.99	1.50
Societe BIC SA	BB FP	2/15/2012	7:00	Y 2011	5.092	-
Investment AB Kinnevik	KINVB SS	2/15/2012	7:00	Y 2011	16.937	1.64
Imerys SA	NK FP	2/15/2012		Y 2011	3.911	-
Voestalpine AG	VOE AV	2/15/2012		Q3 2012	0.44	2.22
Puma SE	PUM GR	2/15/2012		Y 2011	15.004	1.20
Renault SA	RNO FP	2/16/2012	Bef-mkt	Y 2011	7.289	4.83
Randstad Holding NV	RAND NA	2/16/2012	Bef-mkt	Y 2011	2.36	4.21
Banque Cantonale Vaudoise	BCVN SW	2/16/2012	4:00	Y 2011	35.533	1.30
ABB Ltd	ABBN VX	2/16/2012	5:00	Y 2011	1.5	-
Solvay SA	SOLB BB	2/16/2012	5:30	Y 2011	4.945	3.99
Zurich Financial Services AG	ZURN VX	2/16/2012	5:45	Y 2011	26.797	-
Schibsted ASA	SCH NO	2/16/2012	6:00	Y 2011	8.65	-
AXA SA	CS FP	2/16/2012	6:00	Y 2011	1.699	2.97
Synthes Inc	SYST VX	2/16/2012	6:00	Y 2011	8.001	-
Technip SA	TEC FP	2/16/2012	6:00	Y 2011	4.25	2.89
Societe Generale SA	GLE FP	2/16/2012	6:00	Y 2011	3.598	7.71
Norsk Hydro ASA	NHY NO	2/16/2012	6:00	Y 2011	1.865	5.05
Akzo Nobel NV	AKZA NA	2/16/2012	6:00	Y 2011	2.875	3.73
Nestle SA	NESN VX	2/16/2012	6:15	Y 2011	3.079	-
Pernod-Ricard SA	RI FP	2/16/2012	6:30	S1 2012	3.106	2.62
Ladbrokes PLC	LAD LN	2/16/2012	7:00	Y 2011	0.144	-
BAE Systems PLC	BA/ LN	2/16/2012	7:00	Y 2011	0.415	1.57
Telenet Group Holding NV	TNET BB	2/16/2012	16:45	Y 2011	0.283	1.41
Corio NV	CORA NA	2/16/2012	Aft-mkt	Y 2011	2.873	0.91
Eutelsat Communications SA	ETL FP	2/16/2012	Aft-mkt	S1 2012	0.795	-
Cie de St-Gobain	SGO FP	2/16/2012	Aft-mkt	Y 2011	3.294	3.72
Societe Television Francaise 1	TFI FP	2/16/2012		Y 2011	0.827	
Cap Gemini SA	CAP FP	2/16/2012		Y 2011	2.338	
PPR	PP FP	2/16/2012		Y 2011	7.917	
Eramet	ERA FP	2/16/2012		Y 2011	9.998	

## Ежедневный обзор

Kabel Deutschland Holding AG	KD8 GR	2/16/2012		Q3 2012	0.588
EDF SA	EDF FP	2/16/2012		Y 2011	1.808
Givaudan SA	GIVN VX	2/16/2012		Y 2011	44.431
Ratos AB	RATOB SS	2/16/2012		Y 2011	4.14
Reed Elsevier NV	REN NA	2/16/2012		Y 2011	0.811
Reed Elsevier PLC	REL LN	2/16/2012		Y 2011	0.46
Aker Solutions ASA	AKSO NO	2/17/2012	6:00	Y 2011	3.963
Lafarge SA	LG FP	2/17/2012	6:00	Y 2011	2.295
Oriflame Cosmetics SA	ORI SS	2/17/2012	6:15	Y 2011	1.897
Air Liquide SA	AI FP	2/17/2012	6:20	Y 2011	5.419
Aegon NV	AGN NA	2/17/2012	6:30	Y 2011	0.464
Meda AB	MEDAA SS	2/17/2012	7:00	Y 2011	4.94
Anglo American PLC	AAL LN	2/17/2012	7:00	Y 2011	4.839
ICADE	ICAD FP	2/17/2012		Y 2011	2.807
SES SA	SESG FP	2/17/2012		Y 2011	1.446
Spectris PLC	SXS LN	2/17/2012		Y 2011	1.201
Carlsberg A/S	CARLB DC	2/20/2012	6:00	Y 2011	34.173
Ageas	AGS BB	2/20/2012	6:30	Y 2011	-0.121
Petroleum Geo-Services ASA	PGS NO	2/20/2012	7:00	Y 2011	0.245
Drax Group PLC	DRX LN	2/21/2012	7:00	Y 2011	0.516
Wienerberger AG	WIE AV	2/21/2012	7:00	Y 2011	-0.027
AMEC PLC	AMEC LN	2/21/2012	7:00	Y 2011	0.671
TNT Express NV	TNTE NA	2/21/2012	7:00	Y 2011	0.13
FLSmidth & Co A/S	FLS DC	2/21/2012	7:00	Y 2011	27.185
Gas Natural SDG SA	GAS SM	2/21/2012	8:00	Y 2011	1.279
Temenos Group AG	TEMN SW	2/21/2012		Y 2011	1.051
SEB SA	SK FP	2/21/2012		Y 2011	5.276
Schindler Holding AG	SCHP VX	2/21/2012		Y 2011	5.193
Fresenius SE & Co KGaA	FRE GR	2/21/2012		Y 2011	4.608
DSV A/S	DSV DC	2/21/2012		Y 2011	7.545
Jyske Bank A/S	JYSK DC	2/21/2012		Y 2011	9.998
CSM	CSM NA	2/21/2012		Y 2011	1.063
Fresenius Medical Care AG & Co KGaA	FME GR	2/21/2012		Y 2011	3.556
Segro PLC	SGRO LN	2/21/2012		Y 2011	0.175
Kerry Group PLC	KYG ID	2/21/2012		Y 2011	2.101
Valeo SA	FR FP	2/22/2012	Bef-mkt	Y 2011	5.528
Straumann Holding AG	STMN SW	2/22/2012	5:30	Y 2011	6.344
Accor SA	AC FP	2/22/2012	6:00	Y 2011	1.273
Swedish Match AB	SWMA SS	2/22/2012	6:00	Y 2011	12.248
OMV AG	OMV AV	2/22/2012	6:30	Y 2011	3.315

## Ежедневный обзор

CNP Assurances	CNP FP	2/22/2012	6:30	Y 2011	1.356	
Wolters Kluwer NV	WKL NA	2/22/2012	7:00	Y 2011	1.463	
Vallourec SA	VK FP	2/22/2012	16:45	Y 2011	3.31	
Mediobanca SpA	MB IM	2/22/2012		S1 2012		
Schneider Electric SA	SU FP	2/22/2012		Y 2011	3.63	
Sydbank A/S	SYDB DC	2/22/2012		Y 2011	4.506	
France Telecom SA	FTE FP	2/22/2012		Y 2011	1.533	
Hays PLC	HAS LN	2/22/2012		S1 2012		
Logica PLC	LOG LN	2/22/2012		Y 2011	0.094	
Travis Perkins PLC	TPK LN	2/22/2012		Y 2011	0.877	
Rexam PLC	REX LN	2/22/2012		Y 2011	0.356	
Mediaset Espana Comunicacion SA	TL5 SM	2/23/2012	Bef-mkt	Y 2011	0.39	
Aalberts Industries NV	AALB NA	2/23/2012	Bef-mkt	Y 2011	1.351	
Abertis Infraestructuras SA	ABE SM	2/23/2012	Bef-mkt	Y 2011	0.91	
Credit Agricole SA	ACA FP	2/23/2012	6:00	Y 2011	0.601	
Nyrstar	NYR BB	2/23/2012	6:00	Y 2011	0.579	
Natixis	KN FP	2/23/2012	6:00	Y 2011	0.432	
Sulzer AG	SUN SW	2/23/2012	6:00	Y 2011	8.074	
Allianz SE	ALV GR	2/23/2012	6:00	Y 2011	7.399	
Gecina SA	GFC FP	2/23/2012	6:15	Y 2011	4.955	
Centrica PLC	CNA LN	2/23/2012	7:00	Y 2011	0.256	
RSA Insurance Group PLC	RSA LN	2/23/2012	7:00	Y 2011	0.141	
Husqvarna AB	HUSQB SS	2/23/2012	7:00	Y 2011	2.012	
Ashmore Group PLC	ASHM LN	2/23/2012	7:00	S1 2012	0.131	
Iberdrola SA	IBE SM	2/23/2012	8:00	Y 2011	0.501	
Eiffage SA	FGR FP	2/23/2012	Aft-mkt	Y 2011	2.518	
Ferrovial SA	FER SM	2/23/2012	Aft-mkt	Y 2011	0.39	
Hellenic Telecommunications	HTO GA	2/23/2012		Y 2011	0.556	
Bureau Veritas SA	BVI FP	2/23/2012		Y 2011	3.139	
Ingenico	ING FP	2/23/2012		Y 2011	1.558	
Aeroports de Paris	ADP FP	2/23/2012		Y 2011	3.256	
Tenaris SA	TEN IM	2/23/2012		Y 2011	1.203	
Telekom Austria AG	TKA AV	2/23/2012		Y 2011	0.445	
Safran SA	SAF FP	2/23/2012		Y 2011	1.716	
Deutsche Telekom AG	DTE GR	2/23/2012		Y 2011	0.718	
Edenred	EDEN FP	2/23/2012		Y 2011	0.855	
GN Store Nord A/S	GN DC	2/23/2012		Y 2011	5.063	
MTU Aero Engines Holding AG	MTX GR	2/23/2012		Y 2011	3.737	
Fonciere Des Regions	FDR FP	2/23/2012		Y 2011	5.219	
Swiss Re AG	SREN VX	2/23/2012		Y 2011	4.978	

## Ежедневный обзор

AtoS	ATO FP	2/23/2012		Y 2011	3.163	
Commerzbank AG	CBK GR	2/23/2012		Y 2011	0.171	
British American Tobacco PLC	BATS LN	2/23/2012		Y 2011	1.941	
Royal Bank of Scotland Group PLC	RBS LN	2/23/2012		Y 2011	0.008	
Mondi PLC	MNDI LN	2/23/2012		Y 2011	0.663	
Informa PLC	INF LN	2/23/2012		Y 2011	0.374	
Capita PLC	CPI LN	2/23/2012		Y 2011	0.475	
Capital Shopping Centres Group PLC	CSCG LN	2/23/2012		Y 2011	0.161	
Telefonica SA	TEF SM	2/24/2012	Bef-mkt	Y 2011	1.405	
NV Bekaert SA	BEKB BB	2/24/2012	Bef-mkt	Y 2011	3.178	
BASF SE	BAS GR	2/24/2012	6:00	Y 2011	6.328	
Rightmove PLC	RMV LN	2/24/2012	7:00	Y 2011	0.458	
William Hill PLC	WMH LN	2/24/2012	7:00	Y 2011	0.235	
Indra Sistemas SA	IDR SM	2/24/2012		Y 2011	1.157	
Red Electrica Corp SA	REE SM	2/24/2012		Y 2011	3.392	
ACS Actividades de Construccion y	ACS SM	2/24/2012		Y 2011	3.075	
Banca Popolare di Sondrio SCARL	BPSO IM	2/24/2012		Y 2011		
Grifols SA	GRF SM	2/24/2012		Y 2011	0.504	
Amadeus IT Holding SA	AMS SM	2/24/2012		Y 2011	1.07	
Fuchs Petrolub AG	FPE GR	2/24/2012		Y 2011	2.495	
Hammerson PLC	HMSO LN	2/24/2012		Y 2011	0.196	
Lloyds Banking Group PLC	LLOY LN	2/24/2012		Y 2011	0.025	
AP Moeller - Maersk A/S	MAERSKB	2/27/2012		Y 2011	3009.6	
PostNL NV	PNL NA	2/27/2012		Y 2011	0.625	
Bunzl PLC	BNZL LN	2/27/2012		Y 2011	0.661	
Pearson PLC	PERSON LN	2/27/2012		Y 2011	0.838	
Ultra Electronics Holdings PLC	ULE LN	2/27/2012		Y 2011	1.199	
Cookson Group PLC	CKSN LN	2/27/2012		Y 2011	0.683	

## Календарь отчетности, США\*

Компания	Тикер	Дата	Время	Опционная амплитуда колебаний
Masco Corp	MAS US	2/13/2012	Aft-mkt	-0.015 6.09

## Ежедневный обзор

Fidelity National Information Services Inc	FIS US	2/13/2012	Aft-mkt	0.653	2.89
Host Hotels & Resorts Inc	HST US	2/14/2012	Bef-mkt	0.304	1.18
Marsh & McLennan Cos Inc	MMC US	2/14/2012	Bef-mkt	0.452	3.16
Hospira Inc	HSP US	2/14/2012	Bef-mkt	0.466	6.13
Watson Pharmaceuticals Inc	WPI US	2/14/2012	Bef-mkt	1.76	3.56
Goodyear Tire & Rubber Co/The	GT US	2/14/2012	Bef-mkt	0.206	6.99
HCP Inc	HCP US	2/14/2012	Bef-mkt	0.677	2.80
Avon Products Inc	AVP US	2/14/2012	12:00	0.529	5.19
MetLife Inc	MET US	2/14/2012	Aft-mkt	1.244	2.78
FMC Technologies Inc	FTI US	2/14/2012	Aft-mkt	0.505	4.39
BorgWarner Inc	BWA US	2/14/2012		1.166	4.46
Omnicom Group Inc	OMC US	2/14/2012		0.945	3.40
SCANA Corp	SCG US	2/15/2012	Bef-mkt	0.783	1.35
Dean Foods Co	DF US	2/15/2012	Bef-mkt	0.231	7.72
Devon Energy Corp	DVN US	2/15/2012	Bef-mkt	1.484	3.03
Dr Pepper Snapple Group Inc	DPS US	2/15/2012	Bef-mkt	0.743	4.41
Comcast Corp	CMCSA US	2/15/2012	12:00	0.423	2.42
Abercrombie & Fitch Co	ANF US	2/15/2012	12:00	1.122	5.24
Deere & Co	DE US	2/15/2012	12:00	1.228	3.09
Agilent Technologies Inc	A US	2/15/2012	21:05	0.687	3.99
NVIDIA Corp	NVDA US	2/15/2012	21:20	0.238	6.29
Marriott International Inc/DE	MAR US	2/15/2012	22:00	0.467	3.16
CenturyLink Inc	CTL US	2/15/2012	Aft-mkt	0.61	2.15
NetApp Inc	NTAP US	2/15/2012	Aft-mkt	0.579	10.11
Vulcan Materials Co	VMC US	2/15/2012	Aft-mkt	-0.372	3.09
Cliffs Natural Resources Inc	CLF US	2/15/2012	Aft-mkt	1.442	4.26
CF Industries Holdings Inc	CF US	2/15/2012	Aft-mkt	6.842	4.82
CBS Corp	CBS US	2/15/2012		0.532	3.54
Health Care REIT Inc	HCN US	2/16/2012	Bef-mkt	0.897	2.69
DTE Energy Co	DTE US	2/16/2012	Bef-mkt	0.801	1.64
PG&E Corp	PCG US	2/16/2012	Bef-mkt	0.85	1.59
Waste Management Inc	WM US	2/16/2012	Bef-mkt	0.601	2.11
Duke Energy Corp	DUK US	2/16/2012	12:00	0.215	-
Discovery Communications Inc	DISCA US	2/16/2012	12:00	0.688	4.29
DENTSPLY International Inc	XRAY US	2/16/2012	12:00	0.506	-
Apache Corp	APA US	2/16/2012	13:00	2.869	2.54
DaVita Inc	DVA US	2/16/2012	Aft-mkt	1.495	3.23
Nordstrom Inc	JWN US	2/16/2012	Aft-mkt	1.097	3.10
Frontier Communications Corp	FTR US	2/16/2012	Aft-mkt	0.055	5.11
JM Smucker Co/The	SJM US	2/16/2012		1.409	3.77

## Ежедневный обзор

Applied Materials Inc	AMAT US	2/16/2012		0.121	2.98
VF Corp	VFC US	2/16/2012		2.306	4.40
Progress Energy Inc	PGN US	2/16/2012		0.527	-
EOG Resources Inc	EOG US	2/16/2012		0.872	3.30
Molson Coors Brewing Co	TAP US	2/16/2012		0.703	3.26
DIRECTV	DTV US	2/16/2012		0.906	2.88
Ventas Inc	VTR US	2/17/2012	Bef-mkt	0.895	1.82
Campbell Soup Co	CPB US	2/17/2012	Bef-mkt	0.618	1.52
HJ Heinz Co	HNZ US	2/17/2012		0.853	2.73
Constellation Energy Group Inc	CEG US	2/17/2012		0.666	2.76
Cabot Oil & Gas Corp	COG US	2/20/2012	Aft-mkt	0.161	7.19
ONEOK Inc	OKE US	2/20/2012		1.057	2.27
Cabot Oil & Gas Corp	COG US	2/20/2012	Aft-mkt	0.161	7.19
ONEOK Inc	OKE US	2/20/2012		1.057	2.27
Mylan Inc/PA	MYL US	2/21/2012	Bef-mkt	0.499	-
Medco Health Solutions Inc	MHS US	2/21/2012	Bef-mkt	1.168	10.58
Wal-Mart Stores Inc	WMT US	2/21/2012	12:00	1.454	2.13
Medtronic Inc	MDT US	2/21/2012	12:15	0.842	3.37
Newfield Exploration Co	NFX US	2/21/2012	Aft-mkt	1.021	5.15
Chesapeake Energy Corp	CHK US	2/21/2012	Aft-mkt	0.593	2.34
Range Resources Corp	RRC US	2/21/2012	Aft-mkt	0.301	6.63
Nabors Industries Ltd	NBR US	2/21/2012	Aft-mkt	0.503	6.08
Dell Inc	DELL US	2/21/2012	Aft-mkt	0.513	6.16
Intuit Inc	INTU US	2/21/2012	Aft-mkt	0.454	5.14
Macy's Inc	M US	2/21/2012		1.647	4.48
Kraft Foods Inc	KFT US	2/21/2012		0.568	2.49
Home Depot Inc/The	HD US	2/21/2012		0.416	2.90
Expeditors International of Washington	EXPD US	2/21/2012		0.463	2.83
Genuine Parts Co	GPC US	2/21/2012		0.836	2.02
AGL Resources Inc	GAS US	2/22/2012	Bef-mkt	0.927	-
RR Donnelley & Sons Co	RRD US	2/22/2012	Bef-mkt	0.428	1.19
TJX Cos Inc	TJX US	2/22/2012	14:30	0.63	3.33
Analog Devices Inc	ADI US	2/22/2012	21:00	0.477	3.61
QEP Resources Inc	QEP US	2/22/2012	Aft-mkt	0.45	2.99
Hewlett-Packard Co	HPQ US	2/22/2012	Aft-mkt	0.868	5.55
Ltd Brands Inc	LTD US	2/22/2012	Aft-mkt	1.46	3.98
Fluor Corp	FLR US	2/22/2012	Aft-mkt	0.825	4.50
Williams Cos Inc/The	WMB US	2/22/2012	Aft-mkt	0.416	-
Express Scripts Inc	ESRX US	2/22/2012	Aft-mkt	0.851	6.83
Windstream Corp	WIN US	2/22/2012		0.199	-

## Ежедневный обзор

Washington Post Co/The	WPO US	2/22/2012			-
Flowerserve Corp	FLS US	2/22/2012		2.276	4.84
Hormel Foods Corp	HRL US	2/23/2012	Bef-mkt	0.483	-
WPX Energy Inc	WPX US	2/23/2012	Bef-mkt		3.63
Iron Mountain Inc	IRM US	2/23/2012	Bef-mkt	0.294	-
Target Corp	TGT US	2/23/2012	Bef-mkt	1.397	2.93
Patterson Cos Inc	PDCO US	2/23/2012	Bef-mkt	0.505	3.72
Sears Holdings Corp	SHLD US	2/23/2012	Bef-mkt	0.783	10.69
Kohl's Corp	KSS US	2/23/2012	12:00	1.796	2.53
American Tower Corp	AMT US	2/23/2012	12:00	0.717	2.25
Public Service Enterprise Group Inc	PEG US	2/23/2012	12:30	0.477	1.65
CMS Energy Corp	CMS US	2/23/2012	13:30	0.152	-
Gap Inc/The	GPS US	2/23/2012	21:00	0.4	4.26
American International Group Inc	AIG US	2/23/2012	Aft-mkt	0.562	6.00
Salesforce.com Inc	CRM US	2/23/2012	Aft-mkt	0.4	9.24
Ameren Corp	AEE US	2/23/2012		0.152	-
Vornado Realty Trust	VNO US	2/23/2012		1.228	1.92
Denbury Resources Inc	DNR US	2/23/2012		0.327	6.37
Integrus Energy Group Inc	TEG US	2/23/2012		0.98	-
Safeway Inc	SWY US	2/23/2012		0.639	5.00
Public Storage	PSA US	2/23/2012		1.583	1.79
Autodesk Inc	ADSK US	2/23/2012		0.446	5.90
Quanta Services Inc	PWR US	2/23/2012		0.363	5.49
MetroPCS Communications Inc	PCS US	2/23/2012		0.163	7.54
Alpha Natural Resources Inc	ANR US	2/24/2012	Bef-mkt	0.263	7.56
Newmont Mining Corp	NEM US	2/24/2012	Bef-mkt	1.272	
Pepco Holdings Inc	POM US	2/24/2012	Bef-mkt	0.183	
JC Penney Co Inc	JCP US	2/24/2012		0.672	
Interpublic Group of Cos Inc/The	IPG US	2/24/2012		0.393	
First Solar Inc	FSLR US	2/24/2012		1.392	
Pinnacle West Capital Corp	PNW US	2/24/2012		0.042	
Leucadia National Corp	LUK US	2/24/2012			
Northeast Utilities	NU US	2/24/2012		0.689	
Southwestern Energy Co	SWN US	2/27/2012	Aft-mkt	0.475	
priceline.com Inc	PCLN US	2/27/2012	Aft-mkt	5.059	
Lowe's Cos Inc	LOW US	2/27/2012		0.23	
AES Corp/The	AES US	2/27/2012		0.24	
Berkshire Hathaway Inc	BRK/A US	2/27/2012		1850.67	

**Заявление об ограничении ответственности:** Настоящие обзоры подготовлены в информационных целях. Они ни в коем случае не являются и не должны рассматриваться как предложение купить или продать соответствующие ценные бумаги. Информация, содержащаяся в данных обзорах, получена из вызывающих доверия открытых источников. Несмотря на то, что при подготовке обзоров были предприняты необходимые меры для получения достоверной информации, ИК РУСС-ИНВЕСТ не исключает возможность включения в обзор ошибочной информации, предоставленной соответствующими источниками, и не несет за это ответственности. ИК РУСС-ИНВЕСТ, его работники и клиенты могут быть заинтересованы в покупке или продаже ценных бумаг, упомянутых в обзорах.

[www.russ-invest.com](http://www.russ-invest.com)**Москва**

Тел: +7(495) 363-93-80  
Факс: +7(495) 363-93-90  
E-mail: [mail@russ-invest.com](mailto:mail@russ-invest.com)  
Адрес: Москва, 119019, 5-3/12  
Нащокинский переулок

**Санкт-Петербург**

Тел: +7(812) 337-55-37  
Факс: +7(812) 337-55-37  
E-mail: [spb@russ-invest.com](mailto:spb@russ-invest.com)  
Адрес: 190002, СПб, Набережная р.  
Фонтанки, 52

**Самара**

Телефон: +7 (846) 262-75-52  
Факс: +7 (846) 262-75-52  
E-mail: [sam@russ-invest.com](mailto:sam@russ-invest.com)  
Адрес: 443067, Самара, ул. Гагарина,  
дом 95

© 2007 | ОАО «ИК РУСС-ИНВЕСТ»

Лицензия ФСФР №077-08757-000100 и №077-08755-001000

Лицензия ФСФР №177-06310-100000 и №177-06312-010000

Лицензия ФСФР №906