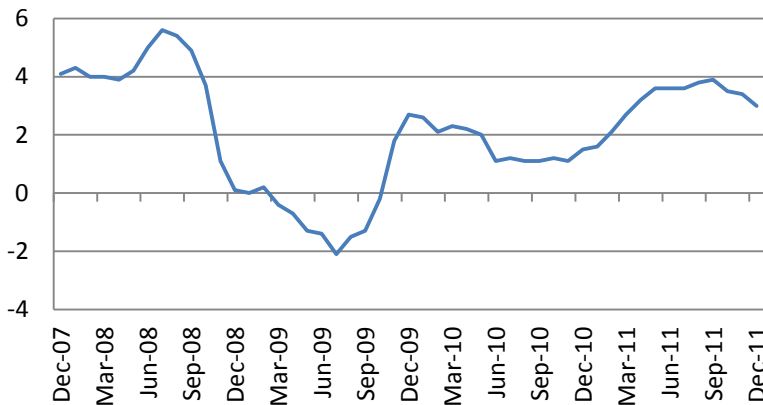


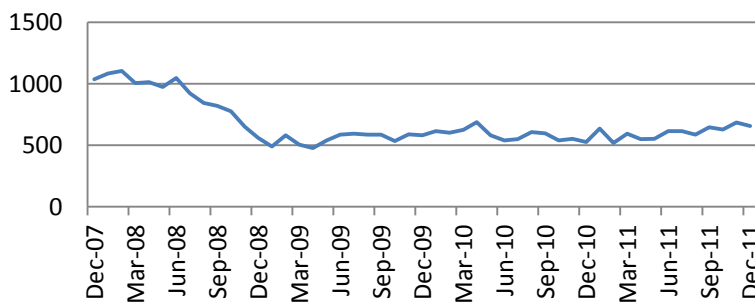


The US indices rose on Thursday as European debt tensions eased. S&P 500 Index added 0.49% while Russell was up by 0.4% with Consumer Discretionary (Internet, Media and Hotels), Industrials as the leaders (+0.94%) and Utilities (-0.76%) as the laggards.

CPI inched was unchanged in December vs consensus forecast of a 0.1% decline. Annually CPI rose by 3.0%, meeting consensus forecast.



New Home Sales fell by 4.7% to 657K vs consensus forecast of a 0.7% decline.

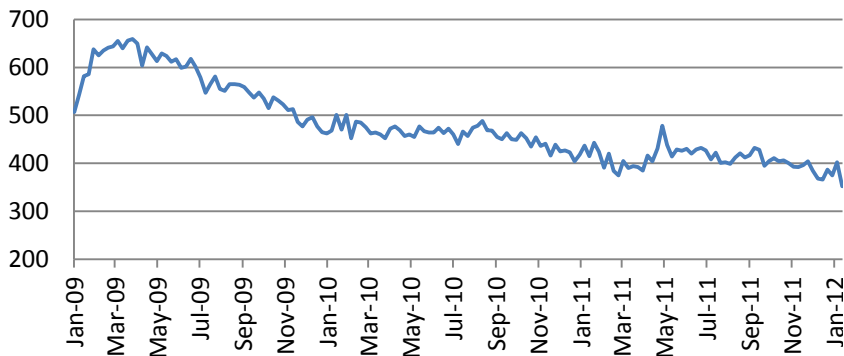


Initial jobless claims declined sharply in a week, down to 352K.

| Macro Indicators | | |
|-------------------|-----------|---------|
| CDS HY 5Y | 602.14 | -1.84% |
| ITX Crossover Eur | 458.80 | -3.06% |
| CDS Japan 5Y | 140.31 | -3.50% |
| CDS EM 5Y | 109.47 | +0.47% |
| CDS Russia 5Y | 242.31 | -3.59% |
| US Tsys 10Y | 2.51% | -0.02% |
| US Tsys 5Y | 1.19% | -0.01% |
| Brazil 10Y | 2.97% | +0.72% |
| Germany 10Y | 1.42% | -0.51% |
| EUR/USD | 1.2965 | +0.26% |
| USD/JPY | 77.12 | +0.14% |
| EUR/GBP | 0.8369 | -0.10% |
| Oil Brent | 112.01 | +0.41% |
| Gold | 1657.7 | +0.19% |
| Copper | 8365 | +1.53% |
| Nickel | 20148 | +3.64% |
| S&P 500 | 1309.75 | -0.06% |
| Russell 2000 | 782.37 | +0.40% |
| Bovespa | 61926.69 | +0.33% |
| Topix | 753.5 | +1.62% |
| Shanghai Comp | 2,310.65 | +0.63% |
| S&P/ASX 300 | 4,239.60 | +0.59% |
| Sensex 30 | 16,768.22 | +0.75% |
| Bovespa | 61,926.69 | +0.33% |
| DJ Euro Stoxx 50 | 2431 | +1.89% |
| CAC Futures | 3327 | +1.90% |
| DAX Futures | 6417.5 | +0.93% |
| CBOE Put/Call | 0.47 | -14.55% |
| CBOE Buy/Write I | 867.89 | +0.02% |
| VIX | 19.87 | -4.88% |
| VSTOXX | 26.5407 | -4.39% |

| Factor Assessment | | |
|---------------------|-------|-------------|
| Factor | Grade | Prev. Grade |
| US credit risks | 3 | 3 |
| Fed Activity | 3 | 5 |
| Corporate news | 2 | 6 |
| Economic statistics | 2 | 1 |
| Inflation concerns | 4 | 4 |
| China tightening | 1 | 2 |
| European Risks | 9 | 7 |
| MENA crisis | 2 | 6 |
| Japan EQ | 1 | 5 |

Daily Market Report



Philadelphia Manufacturing Index declined to 7.3 vs consensus forecast of 10.3.

Asian indices rose on Friday. Hang Seng added 0.6%. Japanese Nikkei was up by 1.47%, Korean Kospi - by 1.82%. S&P/ASX 200 added 0.59%. Shanghai stock indices rose on average 1%. HSBC Manufacturing Index rose to 48.8 in January, indicating that manufacturing still slows in China.

US Home Sales for December will be in focus today.

Earnings season will go on with Parker Hannifin, Schlumberger, General Electric reports in focus.

News flow from Bloomberg:

Pearson Decline as Analysts Say 2011 Tax Gains Won't Be Repeated

Buy Rolls-Royce, Sees 'Very Strong Top-Line Growth:' Goldman

Pentagon Said to Propose Ending \$6.8 Billion Missile, Satellite

AB Foods Revenue Rises on 'Exceptional' Primark, Sugar Sales

Credit Suisse Toxic Bonuses Rival Stock, Gold With 75% Returns

Telekom Austria Says Pecik Exercised Call Options, Holds 20.1%

Carrefour Sees Profit at Low End of Reduced Forecast Range

ThyssenKrupp Rises on Speculation It May Sell New Plants

WWW-news:

[S&P 500 Snapshot: The "January Effect" Rolls On](#)

[Money Supply Figures Suggests Italy Headed Into Depression; Non-Performing Spanish Loans Hit 134](#)

[Google results fall short, rare miss hurts shares](#)

[Intel boosts capex, beats tempered expectations](#)

[Greece Near Deal on Debt](#)

[ISDA Finds An Event Of Default At Eastman Kodak, Whose Bonds Are Trading 27% Higher Than Greece](#)

Daily Market Report

| Calendar* | | | | | | |
|------------------|----|--------------------------------------|--------|--------|-------|---------|
| Date Time | | Event | | Survey | Prior | Revised |
| 01/16/2012 00:01 | UK | Rightmove House Prices (MoM) | JAN | -- | -2.7% | -- |
| 01/16/2012 00:01 | UK | Rightmove House Prices (YoY) | JAN | -- | 1.5% | -- |
| 01/16/2012 05:00 | JN | Consumer Confidence | DEC | 38,5 | 38,1 | -- |
| 01/16/2012 23:50 | JN | Tertiary Industry Index (MoM) | NOV | -0.4% | 0.6% | -- |
| 01/17/2012 | EC | ECB's Reserve Maintenance Period | | | | |
| 01/17/2012 02:00 | CH | Industrial Production YTD YoY | DEC | 13.8% | 14.0% | -- |
| 01/17/2012 02:00 | CH | Industrial Production (YoY) | DEC | 12.3% | 12.4% | -- |
| 01/17/2012 02:00 | CH | Fixed Assets Inv Excl. Rural YTD YoY | DEC | 24.1% | 24.5% | -- |
| 01/17/2012 02:00 | CH | Real GDP YTD (YoY) | 4Q | 9.2% | 9.4% | -- |
| 01/17/2012 02:00 | CH | Real GDP (QoQ) | 4Q | -- | 2.3% | -- |
| 01/17/2012 02:00 | CH | Real GDP (YoY) | 4Q | 8.7% | 9.1% | -- |
| 01/17/2012 02:00 | CH | Retail Sales YTD YoY | DEC | 17.0% | 17.0% | -- |
| 01/17/2012 02:00 | CH | Retail Sales (YoY) | DEC | 17.3% | 17.3% | -- |
| 01/17/2012 06:00 | JN | Machine Tool Orders (YoY) | DEC F | -- | 17.4% | -- |
| 01/17/2012 07:00 | EC | EU 25 New Car Registrations | DEC | -- | -3.5% | -- |
| 01/17/2012 09:30 | UK | DCLG UK House Prices (YoY) | NOV | -- | -0.4% | -- |
| 01/17/2012 09:30 | UK | CPI (MoM) | DEC | 0.4% | 0.2% | -- |
| 01/17/2012 09:30 | UK | CPI (YoY) | DEC | 4.2% | 4.8% | -- |
| 01/17/2012 09:30 | UK | Core CPI YOY | DEC | 3.0% | 3.2% | -- |
| 01/17/2012 09:30 | UK | Retail Price Index | DEC | -- | 238,5 | -- |
| 01/17/2012 09:30 | UK | RPI (MoM) | DEC | 0.4% | 0.2% | -- |
| 01/17/2012 09:30 | UK | RPI (YoY) | DEC | 4.8% | 5.2% | -- |
| 01/17/2012 09:30 | UK | RPI Ex Mort Int.Payments (YoY) | DEC | 4.9% | 5.3% | -- |
| 01/17/2012 10:00 | EC | Euro-Zone CPI - Core (YoY) | DEC | 1.6% | 1.6% | -- |
| 01/17/2012 10:00 | EC | Euro-Zone CPI (MoM) | DEC | 0.4% | 0.1% | -- |
| 01/17/2012 10:00 | EC | Euro-Zone CPI (YoY) | DEC | 2.8% | 3.0% | -- |
| 01/17/2012 10:00 | GE | Zew Survey (Current Situation) | JAN | 24,5 | 26,8 | -- |
| 01/17/2012 10:00 | EC | ZEW Survey (Econ. Sentiment) | JAN | -- | -54,1 | -- |
| 01/17/2012 10:00 | GE | ZEW Survey (Econ. Sentiment) | JAN | -49,8 | -53,8 | -- |
| 01/17/2012 13:30 | US | Empire Manufacturing | JAN | 10,5 | 9,53 | -- |
| 01/18/2012 04:30 | JN | Industrial Production (MoM) | NOV F | -- | -2.6% | -- |
| 01/18/2012 04:30 | JN | Industrial Production YOY% | NOV F | -- | -4.0% | -- |
| 01/18/2012 04:30 | JN | Capacity Utilization (MoM) | NOV F | -- | 4.1% | -- |
| 01/18/2012 09:30 | UK | Claimant Count Rate | DEC | 5.0% | 5.0% | -- |
| 01/18/2012 09:30 | UK | Jobless Claims Change | DEC | 10.0K | 3.0K | -- |
| 01/18/2012 09:30 | UK | Average Weekly Earnings 3M/YoY | NOV | 2.0% | 2.0% | -- |
| 01/18/2012 09:30 | UK | Weekly Earnings exBonus 3M/YoY | NOV | 1.9% | 1.8% | -- |
| 01/18/2012 09:30 | UK | ILO Unemployment Rate (3mths) | NOV | 8.3% | 8.3% | -- |
| 01/18/2012 10:00 | EC | Construction Output SA MoM | NOV | -- | -1.4% | -- |
| 01/18/2012 10:00 | EC | Construction Output WDA YoY | NOV | -- | -2.8% | -- |
| 01/18/2012 12:00 | US | MBA Mortgage Applications | JAN 13 | -- | 4.5% | -- |
| 01/18/2012 13:30 | US | Producer Price Index (MoM) | DEC | 0.1% | 0.3% | -- |

Daily Market Report

| | | | | | | |
|------------------|----|-------------------------------------|--------|-------|----------|------|
| 01/18/2012 13:30 | US | PPI Ex Food & Energy (MoM) | DEC | 0.1% | 0.1% | -- |
| 01/18/2012 13:30 | US | PPI Ex Food & Energy (YoY) | DEC | 2.8% | 2.9% | -- |
| 01/18/2012 13:30 | US | Producer Price Index (YoY) | DEC | 5.1% | 5.7% | -- |
| 01/18/2012 14:00 | US | Total Net TIC Flows | NOV | -- | -\$48.8B | -- |
| 01/18/2012 14:00 | US | Net Long-term TIC Flows | NOV | -- | \$4.8B | -- |
| 01/18/2012 14:15 | US | Industrial Production | DEC | 0.5% | -0.2% | -- |
| 01/18/2012 14:15 | US | Capacity Utilization | DEC | 78.1% | 77.8% | -- |
| 01/18/2012 14:30 | US | Fed's Tarullo to Testify on Volcker | | | | |
| 01/18/2012 15:00 | US | NAHB Housing Market Index | JAN | 22 | 21 | -- |
| 01/18/2012 21:30 | US | API U.S. Crude Oil Inventories | JAN 13 | -- | 397K | -- |
| 01/18/2012 21:30 | US | API Cushing Crude OK Inventory | JAN 13 | -- | -173K | -- |
| 01/18/2012 21:30 | US | API U.S. Distillate Inventory | JAN 13 | -- | 846K | -- |
| 01/18/2012 21:30 | US | API U.S. Gasoline Inventories | JAN 13 | -- | 1892K | -- |
| 01/18/2012 23:50 | JN | Japan Buying Foreign Bonds | JAN 13 | -- | ¥386.3B | -- |
| 01/18/2012 23:50 | JN | Japan Buying Foreign Stocks | JAN 13 | -- | -¥56.4B | -- |
| 01/18/2012 23:50 | JN | Foreign Buying Japan Bonds | JAN 13 | -- | -¥141.3B | -- |
| 01/18/2012 23:50 | JN | Foreign Buying Japan Stocks | JAN 13 | -- | ¥43.1B | -- |
| 01/19/2012 02:00 | CH | Conference Board China November | | | | |
| 01/19/2012 04:00 | JN | Tokyo Condominium Sales (YoY) | DEC | -- | 31.0% | -- |
| 01/19/2012 05:30 | JN | Nationwide Dept. Sales (YoY) | DEC | -- | -1.9% | -- |
| 01/19/2012 05:30 | JN | Tokyo Dept. Store Sales (YoY) | DEC | -- | -3.0% | -- |
| 01/19/2012 09:00 | EC | ECB Publishes Jan. Monthly Report | | | | |
| 01/19/2012 09:00 | EC | Euro-Zone Current Account nsa | NOV | -- | 1.7B | -- |
| 01/19/2012 09:00 | EC | ECB Euro-Zone Current Account SA | NOV | -- | -7.5B | -- |
| 01/19/2012 13:30 | US | Consumer Price Index (MoM) | DEC | 0.1% | -0.0% | -- |
| 01/19/2012 13:30 | US | CPI Ex Food & Energy (MoM) | DEC | 0.1% | 0.2% | -- |
| 01/19/2012 13:30 | US | Consumer Price Index (YoY) | DEC | 3.1% | 3.4% | -- |
| 01/19/2012 13:30 | US | CPI Ex Food & Energy (YoY) | DEC | 2.2% | 2.2% | -- |
| 01/19/2012 13:30 | US | Consumer Price Index NSA | DEC | -- | 226,23 | -- |
| 01/19/2012 13:30 | US | CPI Core Index SA | DEC | -- | 226,836 | -- |
| 01/19/2012 13:30 | US | Housing Starts | DEC | 685K | 685K | -- |
| 01/19/2012 13:30 | US | Building Permits MOM% | DEC | -0.7% | 5.7% | -- |
| 01/19/2012 13:30 | US | Building Permits | DEC | 675K | 681K | 680K |
| 01/19/2012 13:30 | US | Housing Starts MOM% | DEC | 0.0% | 9.3% | -- |
| 01/19/2012 13:30 | US | Initial Jobless Claims | JAN 14 | -- | 399K | -- |
| 01/19/2012 13:30 | US | Continuing Claims | JAN 7 | -- | 3628K | -- |
| 01/19/2012 14:45 | US | Bloomberg Consumer Comfort | JAN 15 | -- | -44,7 | -- |
| 01/19/2012 14:45 | US | Bloomberg Economic Expectations | JAN | -- | -17 | -- |
| 01/19/2012 15:00 | US | Philadelphia Fed. | JAN | 11 | 10,3 | 6,8 |
| 01/19/2012 15:30 | US | EIA Natural Gas Storage Change | JAN 13 | -- | -95 | -- |
| 01/19/2012 16:00 | US | DOE U.S. Crude Oil Inventories | JAN 13 | -- | 4958K | -- |
| 01/19/2012 16:00 | US | DOE Cushing OK Crude Inventory | JAN 13 | -- | -191K | -- |
| 01/19/2012 16:00 | US | DOE U.S. Distillate Inventory | JAN 13 | -- | 3985K | -- |
| 01/19/2012 16:00 | US | DOE U.S. Gasoline Inventories | JAN 13 | -- | 3610K | -- |

Daily Market Report

| | | | | | | |
|------------------|----|-------------------------------------|--------|-------|----------|----|
| 01/19/2012 16:00 | US | DOE U.S. Refinery Utilization | JAN 13 | -- | 0.60% | -- |
| 01/19/2012 16:00 | US | DOE Crude Oil Implied Demand | JAN 13 | -- | 15043 | -- |
| 01/19/2012 16:00 | US | DOE Distillate Implied Demand | JAN 13 | -- | 4350,7 | -- |
| 01/19/2012 16:00 | US | DOE Gasoline Implied Demand | JAN 13 | -- | 8701,9 | -- |
| 01/19/2012 18:00 | US | U.S. to Sell USD15 Bln 10-Year TIPS | | | | |
| 01/19/2012 18:30 | EC | ECB's Weidmann Speaks in | | | | |
| 01/20/2012 04:30 | JN | All Industry Activity Index (MoM) | NOV | -0.9% | 0.8% | -- |
| 01/20/2012 05:00 | JN | Coincident Index CI | NOV F | -- | 90,3 | -- |
| 01/20/2012 05:00 | JN | Leading Index CI | NOV F | -- | 92,9 | -- |
| 01/20/2012 07:00 | GE | Producer Prices (MoM) | DEC | 0.1% | 0.1% | -- |
| 01/20/2012 07:00 | GE | Producer Prices (YoY) | DEC | 4.6% | 5.2% | -- |
| 01/20/2012 07:00 | JN | Convenience Store Sales YoY | DEC | -- | 7.5% | -- |
| 01/20/2012 09:30 | UK | Retail Sales Ex Auto Fuel(MoM) | DEC | 0.6% | -0.7% | -- |
| 01/20/2012 09:30 | UK | Retail Sales Ex Auto Fuel(YoY) | DEC | -- | 0.5% | -- |
| 01/20/2012 09:30 | UK | Retail Sales w/Auto Fuel (MoM) | DEC | 0.7% | -0.4% | -- |
| 01/20/2012 09:30 | UK | Retail Sales w/Auto Fuel (YoY) | DEC | 2.5% | 0.7% | -- |
| 01/20/2012 15:00 | US | Existing Home Sales MoM | DEC | 5.2% | 4.0% | -- |
| 01/20/2012 15:00 | US | Existing Home Sales | DEC | 4.65M | 4.42M | -- |
| 01/20/2012 18:00 | US | Baker Hughes U.S. Rig Count | JAN 20 | -- | -- | -- |
| 01/23/2012 05:00 | JN | Supermarket Sales (YoY) | DEC | -- | -2.3% | -- |
| 01/23/2012 15:00 | EC | Euro-Zone Consumer Confidence | JAN A | -- | -21,1 | -- |
| 01/24/2012 | JN | BOJ Target Rate | JAN 24 | -- | 0.10% | -- |
| 01/24/2012 08:30 | GE | PMI Manufacturing | JAN A | -- | 48,4 | -- |
| 01/24/2012 08:30 | GE | PMI Services | JAN A | -- | 52,4 | -- |
| 01/24/2012 09:00 | EC | PMI Composite | JAN A | -- | 48,3 | -- |
| 01/24/2012 09:00 | EC | PMI Manufacturing | JAN A | -- | 46,9 | -- |
| 01/24/2012 09:00 | EC | PMI Services | JAN A | -- | 48,8 | -- |
| 01/24/2012 09:30 | UK | Public Finances (PSNCR) | DEC | -- | 10.6B | -- |
| 01/24/2012 09:30 | UK | PSNB ex Interventions | DEC | -- | 18.1B | -- |
| 01/24/2012 09:30 | UK | Public Sector Net Borrowing | DEC | -- | 15.2B | -- |
| 01/24/2012 10:00 | EC | Industrial New Orders NSA (YoY) | NOV | -- | 1.6% | -- |
| 01/24/2012 10:00 | EC | Industrial New Orders SA (MoM) | NOV | -- | 1.8% | -- |
| 01/24/2012 15:00 | US | Richmond Fed Manufact. Index | JAN | -- | 3 | -- |
| 01/24/2012 21:30 | US | API U.S. Crude Oil Inventories | JAN 20 | -- | 397K | -- |
| 01/24/2012 21:30 | US | API Cushing Crude OK Inventory | JAN 20 | -- | -- | -- |
| 01/24/2012 21:30 | US | API U.S. Distillate Inventory | JAN 20 | -- | -- | -- |
| 01/24/2012 21:30 | US | API U.S. Gasoline Inventories | JAN 20 | -- | -- | -- |
| 01/24/2012 23:50 | JN | Merchnds Trade Balance Total | DEC | -- | -¥684.7B | - |
| 01/24/2012 23:50 | JN | Adjusted Merchnds Trade Bal. | DEC | -- | -¥537.9B | -- |
| 01/24/2012 23:50 | JN | Merchnds Trade Exports YoY | DEC | -- | -4,5 | -- |
| 01/24/2012 23:50 | JN | Merchnds Trade Imports YoY | DEC | -- | 11,4 | -- |
| 01/25/2012 09:00 | GE | IFO - Business Climate | JAN | -- | 107,2 | -- |
| 01/25/2012 09:00 | GE | IFO - Current Assessment | JAN | -- | 116,7 | -- |
| 01/25/2012 09:00 | GE | IFO - Expectations | JAN | -- | 98,4 | -- |

Daily Market Report

| | | | | | | |
|------------------|----|----------------------------------|--------|----|--------|------|
| 01/25/2012 09:30 | UK | Bank of England Minutes | | | | |
| 01/25/2012 09:30 | UK | BBA Loans for House Purchase | DEC | -- | 34738 | -- |
| 01/25/2012 09:30 | UK | GDP (QoQ) | 4Q A | -- | 0.6% | -- |
| 01/25/2012 09:30 | UK | GDP (YoY) | 4Q A | -- | 0.5% | -- |
| 01/25/2012 09:30 | UK | Index of Services (MoM) | NOV | -- | -0.7% | -- |
| 01/25/2012 09:30 | UK | Index of Services (3mth/3mth) | NOV | -- | 0.2% | -- |
| 01/25/2012 10:00 | EC | ECB Announces Allotment in 7-Day | | | | |
| 01/25/2012 11:00 | UK | CBI Trends Total Orders | JAN | -- | -23 | -- |
| 01/25/2012 11:00 | UK | CBI Trends Selling Prices | JAN | -- | 7 | -- |
| 01/25/2012 11:00 | UK | CBI Business Optimism | JAN | -- | -30 | -- |
| 01/25/2012 12:00 | US | MBA Mortgage Applications | JAN 20 | -- | -- | -- |
| 01/25/2012 15:00 | US | House Price Index MoM | NOV | -- | -0.2% | -- |
| 01/25/2012 15:00 | US | Pending Home Sales MoM | DEC | -- | 7.3% | -- |
| 01/25/2012 15:00 | US | Pending Home Sales YoY | DEC | -- | 6.9% | -- |
| 01/25/2012 15:30 | US | DOE U.S. Crude Oil Inventories | JAN 20 | -- | -- | -- |
| 01/25/2012 15:30 | US | DOE Cushing OK Crude Inventory | JAN 20 | -- | -- | -- |
| 01/25/2012 15:30 | US | DOE U.S. Distillate Inventory | JAN 20 | -- | -- | -- |
| 01/25/2012 15:30 | US | DOE U.S. Gasoline Inventories | JAN 20 | -- | -- | -- |
| 01/25/2012 15:30 | US | DOE U.S. Refinery Utilization | JAN 20 | -- | -- | -- |
| 01/25/2012 15:30 | US | DOE Crude Oil Implied Demand | JAN 20 | -- | -- | -- |
| 01/25/2012 15:30 | US | DOE Distillate Implied Demand | JAN 20 | -- | 4350,7 | -- |
| 01/25/2012 15:30 | US | DOE Gasoline Implied Demand | JAN 20 | -- | -- | -- |
| 01/25/2012 17:30 | US | FOMC Rate Decision | JAN 25 | -- | 0.25% | -- |
| 01/25/2012 18:00 | US | U.S. to Sell 5-Year Notes | | | | |
| 01/25/2012 23:50 | JN | Corp Service Price Index (YoY) | DEC | -- | -0.2% | -- |
| 01/25/2012 23:50 | JN | Japan Buying Foreign Bonds | JAN 20 | -- | -- | -- |
| 01/25/2012 23:50 | JN | Japan Buying Foreign Stocks | JAN 20 | -- | -- | -- |
| 01/25/2012 23:50 | JN | Foreign Buying Japan Bonds | JAN 20 | -- | -- | -- |
| 01/25/2012 23:50 | JN | Foreign Buying Japan Stocks | JAN 20 | -- | -- | -- |
| 01/26/2012 | PO | Bank of Portugal Publishes Bank | | | | |
| 01/26/2012 07:00 | GE | GfK Consumer Confidence Survey | FEB | -- | 5,6 | -- |
| 01/26/2012 11:00 | UK | CBI Reported Sales | JAN | -- | 9 | -- |
| 01/26/2012 13:30 | US | Chicago Fed Nat Activity Index | DEC | -- | -0,37 | -- |
| 01/26/2012 13:30 | US | Durable Goods Orders | DEC | -- | 3.8% | 3.7% |
| 01/26/2012 13:30 | US | Durables Ex Transportation | DEC | -- | 0.3% | -- |
| 01/26/2012 13:30 | US | Cap Goods Orders Nondef Ex Air | DEC | -- | -1.2% | -- |
| 01/26/2012 13:30 | US | Initial Jobless Claims | JAN 21 | -- | -- | -- |
| 01/26/2012 13:30 | US | Continuing Claims | JAN 14 | -- | -- | -- |
| 01/26/2012 14:45 | US | Bloomberg Consumer Comfort | JAN 22 | -- | -- | -- |
| 01/26/2012 15:00 | US | Revisions: Leading Indicators | | | | |
| 01/26/2012 15:00 | US | Leading Indicators | DEC | -- | 0.5% | -- |
| 01/26/2012 15:00 | US | New Home Sales MoM | DEC | -- | 1.6% | -- |
| 01/26/2012 15:00 | US | New Home Sales | DEC | -- | 315K | -- |
| 01/26/2012 15:30 | US | EIA Natural Gas Storage Change | JAN 20 | -- | -- | -- |

Daily Market Report

| | | | | | | |
|------------------|----|---------------------------------|--------|----|-------|----|
| 01/26/2012 16:00 | US | Kansas City Fed Manf. Activity | JAN | -- | -4 | -- |
| 01/26/2012 18:00 | US | U.S. to Sell 7-Year Notes | | | | |
| 01/26/2012 23:30 | JN | Tokyo CPI YoY | JAN | -- | -0.4% | -- |
| 01/26/2012 23:30 | JN | Tokyo CPI Ex-Fresh Food YoY | JAN | -- | -0.3% | -- |
| 01/26/2012 23:30 | JN | Tokyo CPI Ex Food, Energy YoY | JAN | -- | -1.1% | -- |
| 01/26/2012 23:30 | JN | Natl CPI YoY | DEC | -- | -0.5% | -- |
| 01/26/2012 23:30 | JN | Natl CPI Ex-Fresh Food YoY | DEC | -- | -- | -- |
| 01/26/2012 23:30 | JN | Natl CPI Ex Food, Energy YoY | DEC | -- | -1.1% | -- |
| 01/26/2012 23:50 | JN | Retail Trade YoY | DEC | -- | -2.3% | -- |
| 01/26/2012 23:50 | JN | Retail Trade MoM SA | DEC | -- | -2.1% | -- |
| 01/26/2012 23:50 | JN | Large Retailers' Sales | DEC | -- | -2.5% | -- |
| 01/27/2012 09:00 | EC | Euro-Zone M3 s.a. 3 mth ave. | DEC | -- | 2.5% | -- |
| 01/27/2012 09:00 | EC | Euro-Zone M3 s.a. (YoY) | DEC | -- | 2.0% | -- |
| 01/27/2012 13:30 | US | GDP QoQ (Annualized) | 4Q A | -- | 1.8% | -- |
| 01/27/2012 13:30 | US | GDP Price Index | 4Q A | -- | 2.6% | -- |
| 01/27/2012 13:30 | US | Core PCE QoQ | 4Q A | -- | 2.1% | -- |
| 01/27/2012 13:30 | US | Personal Consumption | 4Q A | -- | 1.7% | -- |
| 01/27/2012 14:55 | US | U. of Michigan Confidence | JAN F | -- | -- | -- |
| 01/27/2012 18:00 | US | Baker Hughes U.S. Rig Count | JAN 27 | -- | -- | -- |
| 16-17 JAN | GE | Wholesale Price Index (MoM) | DEC | -- | 0.7% | -- |
| 16-17 JAN | GE | Wholesale price Index (YoY) | DEC | -- | 4.9% | -- |
| 16-18 JAN | CH | Actual FDI (YoY) | DEC | -- | -9.8% | -- |
| 16-20 JAN | UK | Nationwide Consumer Confidence | DEC | -- | 40 | -- |
| 17-18 JAN | AS | ECB's Nowotny, Hungary Simor at | | | | |
| 19-20 JAN | GE | G-20 Vice Ministers of Finance | | | | |
| 22-25 JAN | CH | HSBC Flash China Manufacturing | JAN | -- | 49 | -- |
| 24-30 JAN | GE | Import Price Index (MoM) | DEC | -- | 0.4% | -- |
| 24-30 JAN | GE | Import Price Index (YoY) | DEC | -- | 6.0% | -- |
| 26-31 JAN | UK | Nat'wide House prices sa (MoM) | JAN | -- | -0.2% | -- |
| 26-31 JAN | UK | Nat'wide House prices nsa(YoY) | JAN | -- | 1.0% | -- |

Daily Market Report

| Календарь отчетности, Европа* | | | | | | |
|------------------------------------|----------|-----------|---------|---------|-------|-----------|
| Компания | Тиккер | Дата | Время | Период | Факт | Консенсус |
| ASML Holding NV | ASML NA | 1/18/2012 | 6:00 | Y 2011 | 3.447 | 3.274 |
| Novozymes A/S | NZYMB DC | 1/19/2012 | 7:00 | Y 2011 | | 5.809 |
| Bankinter SA | BKT SM | 1/19/2012 | | Y 2011 | | 0.33 |
| Aurubis AG | NDA GR | 1/19/2012 | | Y 2011 | | 4.345 |
| Wincor Nixdorf AG | WIN GR | 1/23/2012 | | Q1 2012 | | 0.92 |
| Nordea Bank AB | NDA SS | 1/24/2012 | 6:00 | Y 2011 | | 0.65 |
| Koninklijke KPN NV | KPN NA | 1/24/2012 | 6:30 | Y 2011 | | 1.207 |
| Chemring Group PLC | CHG LN | 1/24/2012 | 7:00 | Y 2011 | | 0.529 |
| Investor AB | INVEB SS | 1/24/2012 | 7:15 | Y 2011 | | -14.35 |
| Castellum AB | CAST SS | 1/24/2012 | 10:00 | Y 2011 | | 6 |
| STMicroelectronics NV | STM IM | 1/24/2012 | 10:00 | Y 2011 | | 0.411 |
| Software AG | SOW GR | 1/24/2012 | | Y 2011 | | 2.257 |
| Siemens AG | SIE GR | 1/24/2012 | | Q1 2012 | | 1.726 |
| Novartis AG | NOVN VX | 1/25/2012 | Bef-mkt | Y 2011 | | 5.536 |
| SAP AG | SAP GR | 1/25/2012 | Bef-mkt | Y 2011 | | 2.78 |
| Telefonaktiebolaget LM Ericsson | ERICB SS | 1/25/2012 | 6:30 | Y 2011 | | 6.021 |
| Beiersdorf AG | BEI GR | 1/25/2012 | 7:00 | Y 2011 | | 1.789 |
| Coloplast A/S | COLOB DC | 1/25/2012 | | Q1 2012 | | 12.211 |
| Lonza Group AG | LONN VX | 1/25/2012 | | Y 2011 | | 4.231 |
| Logitech International SA | LOGN VX | 1/26/2012 | 3:00 | Q3 2012 | | 0.417 |
| Hennes & Mauritz AB | HMB SS | 1/26/2012 | 7:00 | Y 2011 | | 9.532 |
| Banco de Sabadell SA | SAB SM | 1/26/2012 | 7:30 | Y 2011 | | 0.171 |
| Kone OYJ | KNEBV FH | 1/26/2012 | 10:30 | Y 2011 | | 2.281 |
| SKF AB | SKFB SS | 1/26/2012 | 11:00 | Y 2011 | | 13.922 |
| Svenska Cellulosa AB | SCAB SS | 1/26/2012 | 11:00 | Y 2011 | | 8.443 |
| Nokia OYJ | NOK1V FH | 1/26/2012 | | Y 2011 | | 0.244 |
| Getinge AB | GETIB SS | 1/26/2012 | | Y 2011 | | 10.509 |
| Kazakhmys PLC | KAZ LN | 1/26/2012 | | Y 2011 | | 2.745 |
| Wartsila OYJ Abp | WRT1V FH | 1/27/2012 | 6:30 | Y 2011 | | 1.634 |
| Zardoya Otis SA | ZOT SM | 1/27/2012 | | Y 2011 | | 0.534 |
| Enel Green Power SpA | EGPW IM | 1/27/2012 | | Y 2011 | | 0.088 |
| CaixaBank | CABK SM | 1/27/2012 | | Y 2011 | | 0.328 |
| Koninklijke Philips Electronics NV | PHIA NA | 1/30/2012 | 6:00 | Y 2011 | | 0.652 |
| Ryanair Holdings PLC | RYA ID | 1/30/2012 | | Q3 2012 | | -0.021 |
| ARM Holdings PLC | ARM LN | 1/31/2012 | 7:00 | Y 2011 | | 0.118 |
| British Sky Broadcasting Group PLC | BSY LN | 1/31/2012 | 7:00 | S1 2012 | | 0.238 |
| Atlas Copco AB | ATCOA SS | 1/31/2012 | 11:00 | Y 2011 | | 10.547 |
| Amer Sports OYJ | AMEAS FH | 1/31/2012 | 11:00 | Y 2011 | | 0.759 |
| Banco Santander SA | SAN SM | 1/31/2012 | | Y 2011 | | 0.854 |
| Enel SpA | ENEL IM | 1/31/2012 | | Y 2011 | | 0.44 |

Daily Market Report

| | | | | | | |
|-------------------------------------|----------|-----------|---------|---------|--|--------|
| QIAGEN NV | QGEN US | 1/31/2012 | | Q4 2011 | | 0.276 |
| Roche Holding AG | ROG VX | 2/1/2012 | 6:00 | Y 2011 | | 12.389 |
| Fortum OYJ | FUM1V FH | 2/1/2012 | 7:00 | Y 2011 | | 1.512 |
| UPM-Kymmene OYJ | UPM1V FH | 2/1/2012 | 7:30 | Y 2011 | | 0.932 |
| Scania AB | SCVB SS | 2/1/2012 | 8:30 | Y 2011 | | 11.862 |
| Unibail-Rodamco SE | UL FP | 2/1/2012 | Aft-mkt | Y 2011 | | 8.946 |
| NCC AB | NCCA SS | 2/1/2012 | | Y 2011 | | 10.369 |
| Fiat Industrial SpA | FI IM | 2/1/2012 | | Y 2011 | | 0.592 |
| Infineon Technologies AG | IFX GR | 2/1/2012 | | Q1 2012 | | 0.091 |
| Fiat SpA | F IM | 2/1/2012 | | Y 2011 | | 0.448 |
| Sandvik AB | SAND SS | 2/1/2012 | | Y 2011 | | 6.991 |
| Deutsche Bank AG | DBK GR | 2/2/2012 | Bef-mkt | Y 2011 | | 4.995 |
| YIT OYJ | YTY1V FH | 2/2/2012 | 6:00 | Y 2011 | | 1.167 |
| Unilever NV | UNA NA | 2/2/2012 | 7:00 | Y 2011 | | 1.553 |
| Kesko OYJ | KESBV FH | 2/2/2012 | 7:00 | Y 2011 | | 1.936 |
| Electrolux AB | ELUXB SS | 2/2/2012 | 7:00 | Y 2011 | | 9.791 |
| Unilever PLC | ULVR LN | 2/2/2012 | 7:00 | Y 2011 | | 1.553 |
| Royal Dutch Shell PLC | RDSA LN | 2/2/2012 | 7:00 | Y 2011 | | 4.264 |
| Konecranes OYJ | KCR1V FH | 2/2/2012 | 7:30 | Y 2011 | | 1.19 |
| Novo Nordisk A/S | NOVOB DC | 2/2/2012 | | Y 2011 | | 29.043 |
| LVMH Moet Hennessy Louis Vuitton SA | MC FP | 2/2/2012 | | Y 2011 | | 6.2 |
| Holmen AB | HOLMB SS | 2/2/2012 | | Y 2011 | | 15.724 |
| Banco Bilbao Vizcaya Argentaria SA | BBVA SM | 2/2/2012 | | Y 2011 | | 0.842 |
| TeliaSonera AB | TLSN SS | 2/2/2012 | | Y 2011 | | 4.336 |
| Banco Comercial Portugues SA | BCP PL | 2/2/2012 | | Y 2011 | | 0.021 |
| AstraZeneca PLC | AZN LN | 2/2/2012 | | Y 2011 | | 7.248 |
| Smith & Nephew PLC | SN/ LN | 2/2/2012 | | Y 2011 | | 0.728 |
| Banco Popular Espanol SA | POP SM | 2/3/2012 | Bef-mkt | Y 2011 | | 0.327 |
| Neste Oil OYJ | NES1V FH | 2/3/2012 | 7:00 | Y 2011 | | 0.389 |
| TDC A/S | TDC DC | 2/3/2012 | 7:00 | Y 2011 | | 3.494 |
| Elisa OYJ | ELI1V FH | 2/3/2012 | | Y 2011 | | 1.218 |
| Bankia SA | BKIA SM | 2/3/2012 | | Q4 2011 | | |
| Christian Dior SA | CDI FP | 2/3/2012 | | Y 2011 | | 6.829 |
| Volvo AB | VOLVB SS | 2/3/2012 | | Y 2011 | | 8.651 |
| BT Group PLC | BT/A LN | 2/3/2012 | | Q3 2012 | | 0.049 |
| Banco Espirito Santo SA | BES PL | 2/3/2012 | | Y 2011 | | 0.181 |

Календарь отчетности, США*

| Компания | Тикер | Дата | Время | Консенсус |
|----------|-------|------|-------|-----------|
|----------|-------|------|-------|-----------|

Daily Market Report

| | | | | | | |
|--------------------------------------|---------|-----------|---------|---------|--|--------|
| Northern Trust Corp | NTRS US | 1/18/2012 | Bef-mkt | Q4 2011 | | 0.68 |
| US Bancorp | USB US | 1/18/2012 | Bef-mkt | Q4 2011 | | 0.634 |
| Charles Schwab Corp/The | SCHW US | 1/18/2012 | Bef-mkt | Q4 2011 | | 0.13 |
| PNC Financial Services Group Inc | PNC US | 1/18/2012 | Bef-mkt | Q4 2011 | | 1.488 |
| State Street Corp | STT US | 1/18/2012 | Bef-mkt | Q4 2011 | | 0.938 |
| Bank of New York Mellon Corp/The | BK US | 1/18/2012 | 11:30 | Q4 2011 | | 0.533 |
| Fastenal Co | FAST US | 1/18/2012 | 13:00 | Q4 2011 | | 0.294 |
| Goldman Sachs Group Inc/The | GS US | 1/18/2012 | 13:00 | Q4 2011 | | 1.226 |
| F5 Networks Inc | FFIV US | 1/18/2012 | 21:05 | Q1 2012 | | 1.009 |
| Xilinx Inc | XLNX US | 1/18/2012 | 21:20 | Q3 2012 | | 0.371 |
| SLM Corp | SLM US | 1/18/2012 | Aft-mkt | Q4 2011 | | 0.489 |
| eBay Inc | EBAY US | 1/18/2012 | Aft-mkt | Q4 2011 | | 0.571 |
| UnitedHealth Group Inc | UNH US | 1/19/2012 | Bef-mkt | Q4 2011 | | 1.036 |
| PPG Industries Inc | PPG US | 1/19/2012 | Bef-mkt | Q4 2011 | | 1.266 |
| Huntington Bancshares Inc/OH | HBAN US | 1/19/2012 | Bef-mkt | Q4 2011 | | 0.141 |
| BB&T Corp | BBT US | 1/19/2012 | Bef-mkt | Q4 2011 | | 0.525 |
| BlackRock Inc | BLK US | 1/19/2012 | Bef-mkt | Q4 2011 | | 2.989 |
| Southwest Airlines Co | LUV US | 1/19/2012 | Bef-mkt | Q4 2011 | | 0.078 |
| Freeport-McMoRan Copper & Gold Inc | FCX US | 1/19/2012 | Bef-mkt | Q4 2011 | | 0.607 |
| Bank of America Corp | BAC US | 1/19/2012 | 12:00 | Q4 2011 | | 0.137 |
| Morgan Stanley | MS US | 1/19/2012 | 12:15 | Q4 2011 | | -0.568 |
| Rockwell Collins Inc | COL US | 1/19/2012 | 12:30 | Q1 2012 | | 0.85 |
| People's United Financial Inc | PBCT US | 1/19/2012 | 21:00 | Q4 2011 | | 0.186 |
| Capital One Financial Corp | COF US | 1/19/2012 | 21:05 | Q4 2011 | | 1.544 |
| International Business Machines Corp | IBM US | 1/19/2012 | 21:30 | Q4 2011 | | 4.622 |
| American Express Co | AXP US | 1/19/2012 | Aft-mkt | Q4 2011 | | 0.973 |
| Johnson Controls Inc | JCI US | 1/19/2012 | Aft-mkt | Q1 2012 | | 0.621 |
| Intel Corp | INTC US | 1/19/2012 | Aft-mkt | Q4 2011 | | 0.611 |
| Intuitive Surgical Inc | ISRG US | 1/19/2012 | Aft-mkt | Q4 2011 | | 3.356 |
| Microsoft Corp | MSFT US | 1/19/2012 | Aft-mkt | Q2 2012 | | 0.762 |
| Google Inc | GOOG US | 1/19/2012 | Aft-mkt | Q4 2011 | | 10.495 |
| Union Pacific Corp | UNP US | 1/19/2012 | | Q4 2011 | | 1.815 |
| Amphenol Corp | APH US | 1/19/2012 | | Q4 2011 | | 0.703 |
| Progressive Corp/The | PGR US | 1/19/2012 | | Q4 2011 | | 0.348 |
| Hudson City Bancorp Inc | HCBK US | 1/19/2012 | | Q4 2011 | | 0.153 |
| First Horizon National Corp | FHN US | 1/20/2012 | Bef-mkt | Q4 2011 | | 0.142 |
| SunTrust Banks Inc | STI US | 1/20/2012 | Bef-mkt | Q4 2011 | | 0.267 |
| Parker Hannifin Corp | PH US | 1/20/2012 | Bef-mkt | Q2 2012 | | 1.624 |
| General Electric Co | GE US | 1/20/2012 | Bef-mkt | Q4 2011 | | 0.379 |
| Comerica Inc | CMA US | 1/20/2012 | Bef-mkt | Q4 2011 | | 0.513 |
| Fifth Third Bancorp | FITB US | 1/20/2012 | 11:30 | Q4 2011 | | 0.349 |
| Schlumberger Ltd | SLB US | 1/20/2012 | | Q4 2011 | | 1.095 |

Daily Market Report

| | | | | | | |
|-------------------------------|---------|-----------|---------|---------|--|--------|
| Consolidated Edison Inc | ED US | 1/20/2012 | | Q4 2011 | | 0.718 |
| TripAdvisor Inc | TRIP US | 1/22/2012 | | Q3 2011 | | 0.379 |
| Texas Instruments Inc | TXN US | 1/23/2012 | 21:30 | Q4 2011 | | 0.228 |
| Western Digital Corp | WDC US | 1/23/2012 | Aft-mkt | Q2 2012 | | 0.709 |
| Zions Bancorporation | ZION US | 1/23/2012 | Aft-mkt | Q4 2011 | | 0.332 |
| CSX Corp | CSX US | 1/23/2012 | Aft-mkt | Q4 2011 | | 0.439 |
| Halliburton Co | HAL US | 1/23/2012 | | Q4 2011 | | 0.988 |
| Cooper Industries PLC | CBE US | 1/24/2012 | Bef-mkt | Q4 2011 | | 0.952 |
| Harley-Davidson Inc | HOG US | 1/24/2012 | Bef-mkt | Q4 2011 | | 0.224 |
| KeyCorp | KEY US | 1/24/2012 | Bef-mkt | Q4 2011 | | 0.204 |
| Air Products & Chemicals Inc | APD US | 1/24/2012 | Bef-mkt | Q1 2012 | | 1.357 |
| Quest Diagnostics Inc | DGX US | 1/24/2012 | Bef-mkt | Q4 2011 | | 1.061 |
| Baker Hughes Inc | BHI US | 1/24/2012 | Bef-mkt | Q4 2011 | | 1.33 |
| McDonald's Corp | MCD US | 1/24/2012 | Bef-mkt | Q4 2011 | | 1.289 |
| El du Pont de Nemours & Co | DD US | 1/24/2012 | 11:00 | Q4 2011 | | 0.329 |
| EMC Corp/Massachusetts | EMC US | 1/24/2012 | 12:00 | Q4 2011 | | 0.461 |
| Verizon Communications Inc | VZ US | 1/24/2012 | 12:30 | Q4 2011 | | 0.539 |
| Total System Services Inc | TSS US | 1/24/2012 | 21:00 | Q4 2011 | | 0.312 |
| Stryker Corp | SYK US | 1/24/2012 | 21:00 | Q4 2011 | | 1.028 |
| Altera Corp | ALTR US | 1/24/2012 | 21:15 | Q4 2011 | | 0.42 |
| CA Inc | CA US | 1/24/2012 | 21:30 | Q3 2012 | | 0.544 |
| Norfolk Southern Corp | NSC US | 1/24/2012 | Aft-mkt | Q4 2011 | | 1.396 |
| Apple Inc | AAPL US | 1/24/2012 | Aft-mkt | Q1 2012 | | 10.048 |
| Yahoo! Inc | YHOO US | 1/24/2012 | Aft-mkt | Q4 2011 | | 0.242 |
| Travelers Cos Inc/The | TRV US | 1/24/2012 | | Q4 2011 | | 1.507 |
| Advanced Micro Devices Inc | AMD US | 1/24/2012 | | Q4 2011 | | 0.157 |
| International Game Technology | IGT US | 1/24/2012 | | Q1 2012 | | 0.219 |
| Johnson & Johnson | JNJ US | 1/24/2012 | | Q4 2011 | | 1.1 |
| Peabody Energy Corp | BTU US | 1/24/2012 | | Q4 2011 | | 1.321 |
| Regions Financial Corp | RF US | 1/24/2012 | | Q4 2011 | | 0.03 |
| Waters Corp | WAT US | 1/24/2012 | | Q4 2011 | | 1.5 |
| Coach Inc | COH US | 1/24/2012 | | Q2 2012 | | 1.152 |
| Kimberly-Clark Corp | KMB US | 1/24/2012 | | Q4 2011 | | 1.295 |
| Automatic Data Processing Inc | ADP US | 1/25/2012 | Bef-mkt | Q2 2012 | | 0.679 |
| Bemis Co Inc | BMS US | 1/25/2012 | Bef-mkt | Q4 2011 | | 0.395 |
| MeadWestvaco Corp | MWV US | 1/25/2012 | Bef-mkt | Q4 2011 | | 0.36 |
| TE Connectivity Ltd | TEL US | 1/25/2012 | Bef-mkt | Q1 2012 | | 0.699 |
| Corning Inc | GLW US | 1/25/2012 | Bef-mkt | Q4 2011 | | 0.325 |
| Praxair Inc | PX US | 1/25/2012 | Bef-mkt | Q4 2011 | | 1.367 |
| United Technologies Corp | UTX US | 1/25/2012 | Bef-mkt | Q4 2011 | | 1.457 |
| Abbott Laboratories | ABT US | 1/25/2012 | Bef-mkt | Q4 2011 | | 1.435 |
| Rockwell Automation Inc | ROK US | 1/25/2012 | Bef-mkt | Q1 2012 | | 1.202 |

Daily Market Report

| | | | | | | |
|------------------------------|---------|-----------|---------|---------|--|-------|
| WellPoint Inc | WLP US | 1/25/2012 | 11:00 | Q4 2011 | | 1.119 |
| Motorola Solutions Inc | MSI US | 1/25/2012 | 12:00 | Q4 2011 | | 0.813 |
| Dover Corp | DOV US | 1/25/2012 | 12:00 | Q4 2011 | | 1.063 |
| Boeing Co/The | BA US | 1/25/2012 | 12:30 | Q4 2011 | | 1.002 |
| St Jude Medical Inc | STJ US | 1/25/2012 | 12:30 | Q4 2011 | | 0.84 |
| Molex Inc | MOLX US | 1/25/2012 | 12:30 | Q2 2012 | | 0.408 |
| Southern Co/The | SO US | 1/25/2012 | 12:30 | Q4 2011 | | 0.298 |
| WW Grainger Inc | GWW US | 1/25/2012 | 13:00 | Q4 2011 | | 2.12 |
| ConocoPhillips | COP US | 1/25/2012 | 13:00 | Q4 2011 | | 1.887 |
| Citrix Systems Inc | CTXS US | 1/25/2012 | 21:05 | Q4 2011 | | 0.757 |
| Netflix Inc | NFLX US | 1/25/2012 | 21:05 | Q4 2011 | | 0.543 |
| Varian Medical Systems Inc | VAR US | 1/25/2012 | 22:00 | Q1 2012 | | 0.748 |
| Teradyne Inc | TER US | 1/25/2012 | 23:00 | Q4 2011 | | 0.116 |
| Jacobs Engineering Group Inc | JEC US | 1/25/2012 | Aft-mkt | Q1 2012 | | 0.694 |
| Noble Corp | NE US | 1/25/2012 | Aft-mkt | Q4 2011 | | 0.536 |
| Owens-Illinois Inc | OI US | 1/25/2012 | Aft-mkt | Q4 2011 | | 0.467 |
| E*Trade Financial Corp | ETFC US | 1/25/2012 | Aft-mkt | Q4 2011 | | 0.196 |
| SanDisk Corp | SNDK US | 1/25/2012 | Aft-mkt | Q4 2011 | | 1.257 |
| Stanley Black & Decker Inc | SWK US | 1/25/2012 | Aft-mkt | Q4 2011 | | 1.289 |
| Symantec Corp | SYMC US | 1/25/2012 | Aft-mkt | Q3 2012 | | 0.408 |
| LSI Corp | LSI US | 1/25/2012 | Aft-mkt | Q4 2011 | | 0.105 |
| Textron Inc | TXT US | 1/25/2012 | | Q4 2011 | | 0.339 |
| Murphy Oil Corp | MUR US | 1/25/2012 | | Q4 2011 | | 1.409 |
| Occidental Petroleum Corp | OXY US | 1/25/2012 | | Q4 2011 | | 1.972 |
| Allegheny Technologies Inc | ATI US | 1/25/2012 | | Q4 2011 | | 0.572 |
| Xerox Corp | XRX US | 1/25/2012 | | Q4 2011 | | 0.326 |
| Hess Corp | HES US | 1/25/2012 | | Q4 2011 | | 1.352 |
| Gilead Sciences Inc | GILD US | 1/25/2012 | | Q4 2011 | | 1.046 |
| Exelon Corp | EXC US | 1/25/2012 | | Q4 2011 | | 0.887 |
| Ball Corp | BLL US | 1/26/2012 | Bef-mkt | Q4 2011 | | 0.53 |
| Colgate-Palmolive Co | CL US | 1/26/2012 | Bef-mkt | Q4 2011 | | 1.298 |
| AmerisourceBergen Corp | ABC US | 1/26/2012 | Bef-mkt | Q1 2012 | | 0.625 |
| Time Warner Cable Inc | TWC US | 1/26/2012 | Bef-mkt | Q4 2011 | | 1.205 |
| Mead Johnson Nutrition Co | MJN US | 1/26/2012 | Bef-mkt | Q4 2011 | | 0.508 |
| Airgas Inc | ARG US | 1/26/2012 | Bef-mkt | Q3 2012 | | 0.969 |
| Covidien PLC | COV US | 1/26/2012 | Bef-mkt | Q1 2012 | | 1.037 |
| EQT Corp | EQT US | 1/26/2012 | Bef-mkt | Q4 2011 | | 0.543 |
| Eaton Corp | ETN US | 1/26/2012 | Bef-mkt | Q4 2011 | | 1.116 |
| Raytheon Co | RTN US | 1/26/2012 | 12:00 | Q4 2011 | | 1.344 |
| Zimmer Holdings Inc | ZMH US | 1/26/2012 | 12:00 | Q4 2011 | | 1.341 |
| Consol Energy Inc | CNX US | 1/26/2012 | 12:00 | Q4 2011 | | 0.617 |
| Caterpillar Inc | CAT US | 1/26/2012 | 12:30 | Q4 2011 | | 1.727 |

Daily Market Report

| | | | | | | |
|---------------------------------|---------|-----------|---------|---------|--|-------|
| Invesco Ltd | IVZ US | 1/26/2012 | 12:30 | Q4 2011 | | 0.404 |
| AT&T Inc | T US | 1/26/2012 | 13:00 | Q4 2011 | | 0.43 |
| Sherwin-Williams Co/The | SHW US | 1/26/2012 | 13:00 | Q4 2011 | | 0.831 |
| VeriSign Inc | VRSN US | 1/26/2012 | 21:05 | Q4 2011 | | 0.414 |
| KLA-Tencor Corp | KLAC US | 1/26/2012 | 21:15 | Q2 2012 | | 0.655 |
| Eastman Chemical Co | EMN US | 1/26/2012 | 22:00 | Q4 2011 | | 0.794 |
| Federated Investors Inc | FII US | 1/26/2012 | Aft-mkt | Q4 2011 | | 0.384 |
| Amgen Inc | AMGN US | 1/26/2012 | Aft-mkt | Q4 2011 | | 1.22 |
| Starbucks Corp | SBUX US | 1/26/2012 | Aft-mkt | Q1 2012 | | 0.482 |
| Chubb Corp/The | CB US | 1/26/2012 | Aft-mkt | Q4 2011 | | 1.585 |
| Juniper Networks Inc | JNPR US | 1/26/2012 | Aft-mkt | Q4 2011 | | 0.281 |
| Celgene Corp | CELG US | 1/26/2012 | | Q4 2011 | | 1.054 |
| Robert Half International Inc | RHI US | 1/26/2012 | | Q4 2011 | | 0.312 |
| DeVry Inc | DV US | 1/26/2012 | | Q2 2012 | | 1.005 |
| McCormick & Co Inc/MD | MKC US | 1/26/2012 | | Q4 2011 | | 0.977 |
| Bristol-Myers Squibb Co | BMJ US | 1/26/2012 | | Q4 2011 | | 0.551 |
| Motorola Mobility Holdings Inc | MMI US | 1/26/2012 | | Q4 2011 | | 0.224 |
| Precision Castparts Corp | PCP US | 1/26/2012 | | Q3 2012 | | 2.211 |
| AutoNation Inc | AN US | 1/26/2012 | | Q4 2011 | | 0.481 |
| Baxter International Inc | BAX US | 1/26/2012 | | Q4 2011 | | 1.168 |
| Lockheed Martin Corp | LMT US | 1/26/2012 | | Q4 2011 | | 1.944 |
| Nucor Corp | NUE US | 1/26/2012 | | Q4 2011 | | 0.276 |
| General Dynamics Corp | GD US | 1/26/2012 | | Q4 2011 | | 1.993 |
| 3M Co | MMM US | 1/26/2012 | | Q4 2011 | | 1.305 |
| NextEra Energy Inc | NEE US | 1/27/2012 | Bef-mkt | Q4 2011 | | 0.913 |
| Newell Rubbermaid Inc | NWL US | 1/27/2012 | Bef-mkt | Q4 2011 | | 0.38 |
| DR Horton Inc | DHI US | 1/27/2012 | Bef-mkt | Q1 2012 | | 0.038 |
| Honeywell International Inc | HON US | 1/27/2012 | Bef-mkt | Q4 2011 | | 1.044 |
| Altria Group Inc | MO US | 1/27/2012 | 12:00 | Q4 2011 | | 0.488 |
| Procter & Gamble Co/The | PG US | 1/27/2012 | | Q2 2012 | | 1.09 |
| Legg Mason Inc | LM US | 1/27/2012 | | Q3 2012 | | 0.307 |
| Microchip Technology Inc | MCHP US | 1/27/2012 | | Q3 2012 | | 0.418 |
| Ford Motor Co | F US | 1/27/2012 | | Q4 2011 | | 0.266 |
| American Electric Power Co Inc | AEP US | 1/27/2012 | | Q4 2011 | | 0.403 |
| T Rowe Price Group Inc | TROW US | 1/27/2012 | | Q4 2011 | | 0.693 |
| Chevron Corp | CVX US | 1/27/2012 | | Q4 2011 | | 2.901 |
| Dominion Resources Inc/VA | D US | 1/27/2012 | | Q4 2011 | | 0.651 |
| Gannett Co Inc | GCI US | 1/30/2012 | Bef-mkt | Q4 2011 | | 0.69 |
| McKesson Corp | MCK US | 1/30/2012 | 21:00 | Q3 2012 | | 1.372 |
| Plum Creek Timber Co Inc | PCL US | 1/30/2012 | Aft-mkt | Q4 2011 | | 0.39 |
| Eli Lilly & Co | LLY US | 1/31/2012 | Bef-mkt | Q4 2011 | | 0.803 |
| L-3 Communications Holdings Inc | LLL US | 1/31/2012 | Bef-mkt | Q4 2011 | | 2.405 |

Daily Market Report

| | | | | | | |
|------------------------------|---------|-----------|---------|---------|--|--------|
| McGraw-Hill Cos Inc/The | MHP US | 1/31/2012 | Bef-mkt | Q4 2011 | | 0.564 |
| Biogen Idec Inc | BIIB US | 1/31/2012 | Bef-mkt | Q4 2011 | | 1.498 |
| Archer-Daniels-Midland Co | ADM US | 1/31/2012 | Bef-mkt | Q2 2012 | | 0.771 |
| Tyco International Ltd | TYC US | 1/31/2012 | Bef-mkt | Q1 2012 | | 0.781 |
| United Parcel Service Inc | UPS US | 1/31/2012 | Bef-mkt | Q4 2011 | | 1.252 |
| Entergy Corp | ETR US | 1/31/2012 | Bef-mkt | Q4 2011 | | 0.889 |
| Danaher Corp | DHR US | 1/31/2012 | 11:00 | Q4 2011 | | 0.783 |
| Mattel Inc | MAT US | 1/31/2012 | 11:00 | Q4 2011 | | 0.996 |
| Harris Corp | HRS US | 1/31/2012 | 12:00 | Q2 2012 | | 1.195 |
| Illinois Tool Works Inc | ITW US | 1/31/2012 | 13:00 | Q4 2011 | | 0.882 |
| Avery Dennison Corp | AVY US | 1/31/2012 | 13:30 | Q4 2011 | | 0.467 |
| CH Robinson Worldwide Inc | CHRW US | 1/31/2012 | 21:15 | Q4 2011 | | 0.677 |
| ACE Ltd | ACE US | 1/31/2012 | Aft-mkt | Q4 2011 | | 1.807 |
| Broadcom Corp | BRCM US | 1/31/2012 | Aft-mkt | Q4 2011 | | 0.646 |
| Boston Properties Inc | BXP US | 1/31/2012 | Aft-mkt | Q4 2011 | | 1.192 |
| United States Steel Corp | X US | 1/31/2012 | | Q4 2011 | | -0.866 |
| PACCAR Inc | PCAR US | 1/31/2012 | | Q4 2011 | | 0.794 |
| Exxon Mobil Corp | XOM US | 1/31/2012 | | Q4 2011 | | 2.011 |
| Pfizer Inc | PFE US | 1/31/2012 | | Q4 2011 | | 0.466 |
| Helmerich & Payne Inc | HP US | 1/31/2012 | | Q1 2012 | | 1.159 |
| Amazon.com Inc | AMZN US | 1/31/2012 | | Q4 2011 | | 0.155 |
| Aflac Inc | AFL US | 1/31/2012 | | Q4 2011 | | 1.519 |
| Valero Energy Corp | VLO US | 1/31/2012 | | Q4 2011 | | 0.115 |
| Lexmark International Inc | LXK US | 1/31/2012 | | Q4 2011 | | 1.163 |
| CR Bard Inc | BCR US | 1/31/2012 | | Q4 2011 | | 1.683 |
| Novellus Systems Inc | NVLS US | 1/31/2012 | | Q4 2011 | | 0.454 |
| NiSource Inc | NI US | 2/1/2012 | Bef-mkt | Q4 2011 | | 0.368 |
| Thermo Fisher Scientific Inc | TMO US | 2/1/2012 | Bef-mkt | Q4 2011 | | 1.155 |
| Aetna Inc | AET US | 2/1/2012 | 11:00 | Q4 2011 | | 0.962 |
| NASDAQ OMX Group Inc/The | NDAQ US | 2/1/2012 | 12:00 | Q4 2011 | | 0.617 |
| Franklin Resources Inc | BEN US | 2/1/2012 | 13:30 | Q1 2012 | | 2.084 |
| Chipotle Mexican Grill Inc | CMG US | 2/1/2012 | 21:00 | Q4 2011 | | 1.819 |
| QUALCOMM Inc | QCOM US | 2/1/2012 | 21:00 | Q1 2012 | | 0.899 |
| Allstate Corp/The | ALL US | 2/1/2012 | 21:05 | Q4 2011 | | 0.925 |
| Assurant Inc | AIZ US | 2/1/2012 | Aft-mkt | Q4 2011 | | 1.372 |
| Equity Residential | EQR US | 2/1/2012 | Aft-mkt | Q4 2011 | | 0.646 |
| Tesoro Corp | TSO US | 2/1/2012 | Aft-mkt | Q4 2011 | | -0.136 |
| AvalonBay Communities Inc | AVB US | 2/1/2012 | Aft-mkt | Q4 2011 | | 1.222 |
| Ameriprise Financial Inc | AMP US | 2/1/2012 | Aft-mkt | Q4 2011 | | 1.367 |
| Wisconsin Energy Corp | WEC US | 2/1/2012 | | Q4 2011 | | 0.474 |
| Marathon Petroleum Corp | MPC US | 2/1/2012 | | Q4 2011 | | 0.352 |
| Hershey Co/The | HSY US | 2/1/2012 | | Q4 2011 | | 0.699 |

Daily Market Report

| | | | | | | |
|---|---------|----------|---------|---------|--|--------|
| Electronic Arts Inc | EA US | 2/1/2012 | | Q3 2012 | | 0.938 |
| BMC Software Inc | BMC US | 2/1/2012 | | Q3 2012 | | 0.824 |
| Marathon Oil Corp | MRO US | 2/1/2012 | | Q4 2011 | | 0.831 |
| Northrop Grumman Corp | NOC US | 2/1/2012 | | Q4 2011 | | 1.668 |
| Boston Scientific Corp | BSX US | 2/1/2012 | | Q4 2011 | | 0.085 |
| Perrigo Co | PRGO US | 2/1/2012 | | Q2 2012 | | 1.16 |
| National Oilwell Varco Inc | NOV US | 2/2/2012 | Bef-mkt | Q4 2011 | | 1.292 |
| CME Group Inc | CME US | 2/2/2012 | Bef-mkt | Q4 2011 | | 3.708 |
| Ryder System Inc | R US | 2/2/2012 | Bef-mkt | Q4 2011 | | 0.967 |
| PulteGroup Inc | PHM US | 2/2/2012 | Bef-mkt | Q4 2011 | | 0.066 |
| Cardinal Health Inc | CAH US | 2/2/2012 | Bef-mkt | Q2 2012 | | 0.761 |
| International Paper Co | IP US | 2/2/2012 | Bef-mkt | Q4 2011 | | 0.612 |
| Goodrich Corp | GR US | 2/2/2012 | Bef-mkt | Q4 2011 | | 1.575 |
| Roper Industries Inc | ROP US | 2/2/2012 | Bef-mkt | Q4 2011 | | 1.214 |
| TECO Energy Inc | TE US | 2/2/2012 | Bef-mkt | Q4 2011 | | 0.28 |
| Xcel Energy Inc | XEL US | 2/2/2012 | Bef-mkt | Q4 2011 | | 0.298 |
| Cameron International Corp | CAM US | 2/2/2012 | Bef-mkt | Q4 2011 | | 0.763 |
| Starwood Hotels & Resorts Worldwide Inc | HOT US | 2/2/2012 | Bef-mkt | Q4 2011 | | 0.565 |
| Dow Chemical Co/The | DOW US | 2/2/2012 | 11:30 | Q4 2011 | | 0.313 |
| Cigna Corp | CI US | 2/2/2012 | 11:30 | Q4 2011 | | 1.188 |
| Viacom Inc | VIAB US | 2/2/2012 | 13:00 | Q1 2012 | | 1.063 |
| Kellogg Co | K US | 2/2/2012 | 13:00 | Q4 2011 | | 0.629 |
| Fiserv Inc | FISV US | 2/2/2012 | Aft-mkt | Q4 2011 | | 1.249 |
| Principal Financial Group Inc | PFG US | 2/2/2012 | Aft-mkt | Q4 2011 | | 0.746 |
| Genworth Financial Inc | GNW US | 2/2/2012 | Aft-mkt | Q4 2011 | | 0.18 |
| CareFusion Corp | CFN US | 2/2/2012 | Aft-mkt | Q2 2012 | | 0.444 |
| Sara Lee Corp | SLE US | 2/2/2012 | | Q2 2012 | | 0.254 |
| Yum! Brands Inc | YUM US | 2/2/2012 | | Q4 2011 | | 0.739 |
| Edwards Lifesciences Corp | EW US | 2/2/2012 | | Q4 2011 | | 0.593 |
| Diamond Offshore Drilling Inc | DO US | 2/2/2012 | | Q4 2011 | | 0.993 |
| Cummins Inc | CMI US | 2/2/2012 | | Q4 2011 | | 2.219 |
| Allergan Inc/United States | AGN US | 2/2/2012 | | Q4 2011 | | 0.995 |
| Stericycle Inc | SRCL US | 2/2/2012 | | Q4 2011 | | 0.735 |
| Dun & Bradstreet Corp/The | DNB US | 2/2/2012 | | Q4 2011 | | 2.117 |
| Whirlpool Corp | WHR US | 2/2/2012 | | Q4 2011 | | 1.778 |
| Merck & Co Inc | MRK US | 2/2/2012 | | Q4 2011 | | 0.949 |
| Mastercard Inc | MA US | 2/2/2012 | | Q4 2011 | | 3.938 |
| News Corp | NWSA US | 2/2/2012 | | Q2 2012 | | 0.34 |
| Vulcan Materials Co | VMC US | 2/2/2012 | | Q4 2011 | | -0.376 |
| Weyerhaeuser Co | WY US | 2/3/2012 | Bef-mkt | Q4 2011 | | 0.066 |
| Simon Property Group Inc | SPG US | 2/3/2012 | Bef-mkt | Q4 2011 | | 1.905 |
| Estee Lauder Cos Inc/The | EL US | 2/3/2012 | | Q2 2012 | | 2.022 |

Daily Market Report

| | | | | | |
|-------------------------------------|---------|----------|---------|--|--------|
| Tyson Foods Inc | TSN US | 2/3/2012 | Q1 2012 | | 0.349 |
| Snap-on Inc | SNA US | 2/3/2012 | Q4 2011 | | 1.175 |
| Harman International Industries Inc | HAR US | 2/3/2012 | Q2 2012 | | 0.773 |
| Reynolds American Inc | RAI US | 2/3/2012 | Q4 2011 | | 0.689 |
| PerkinElmer Inc | PKI US | 2/3/2012 | Q4 2011 | | 0.511 |
| Sunoco Inc | SUN US | 2/3/2012 | Q4 2011 | | -0.062 |
| Beam Inc | BEAM US | 2/3/2012 | Q4 2011 | | 0.666 |
| PPL Corp | PPL US | 2/3/2012 | Q4 2011 | | 0.596 |
| Spectra Energy Corp | SE US | 2/3/2012 | Q4 2011 | | 0.484 |
| Aon Corp | AON US | 2/3/2012 | Q4 2011 | | 0.961 |
| Constellation Energy Group Inc | CEG US | 2/3/2012 | Q4 2011 | | 0.686 |
| CBRE Group Inc | CBG US | 2/3/2012 | Q4 2011 | | 0.438 |
| Moody's Corp | MCO US | 2/3/2012 | Q4 2011 | | 0.482 |
| Clorox Co/The | CLX US | 2/3/2012 | Q2 2012 | | 0.691 |
| JDS Uniphase Corp | JDSU US | 2/3/2012 | Q2 2012 | | 0.099 |

Technical view

S&P 500 Index, daily



The S&P 500 slowly advanced to 1295. If 1320 level is passed, new highs above 1300 will become likely. However, failure to overcome 200-MA may lead to test of new lows below 1100 in 2012.

A pessimistic midterm target seems to be around 1020.

Current support levels are at 1210, 1155, 1092, 1041, 1010, 980, 950, 870.

Resistance levels: 1330, 1365, 1400.

Dow Jones Stoxx 600 Europe Index, daily



As 220 support held, bounce to 250, 260 still may go on. However, testing new lows is possible in 2012. If 200-MA is pass

Important support levels: 233, 220, 203.

Important resistance levels –251, 262, 273, 278, 293, 302.

Daily Market Report

AEX, daily



AEX Index (AEX-Index) 0Daily 17DEC2006-20JAN2012 Copyright© 2012 Bloomberg Finance L.P. 20-Jan-2012 10:59:15

Support levels – 265, 246, 217, 186.

Resistance levels – 311, 320, 347, 352.

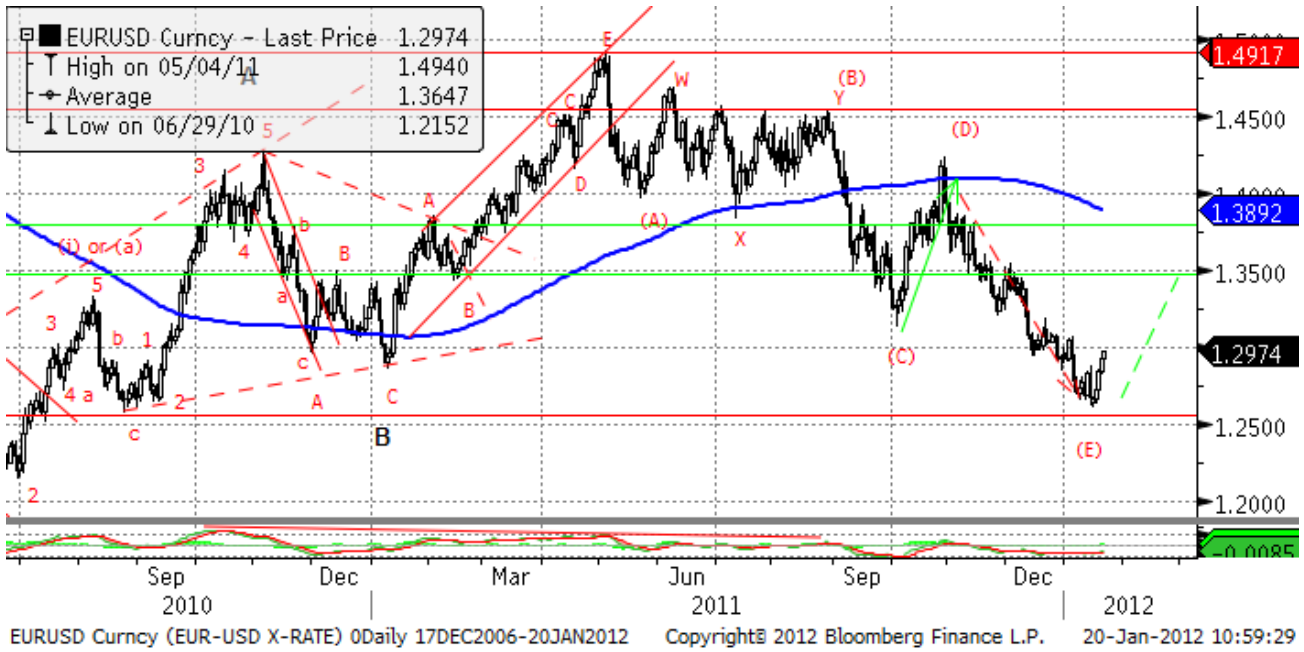
Long term trend – flat.

Mid-term trend – down.

Short-term trend – down.

Daily Market Report

EURUSD, daily



EURUSD has been in a long term flat. The long term reversal may finally lead us to new lows at 1.17 in 2012. However, to eliminate oversold condition, the pair should bounce to 1.35-1.36 in the coming weeks.

Likely resistance zones – 1.38, 1.41, 1.43, 1.45, 1.47, 1.4940, 1.5255.

Major support zones – 1.2859, 1.25.

Daily Market Report

Disclaimer. This report was prepared and provided for information purposes only under the condition it will not form the sole basis for any investment decision. It does not constitute an offer and should not be considered as an offer, or solicitation of an offer, to buy or sell any securities. The information and opinions contained in this report have been received from sources believed to be reliable. While every reasonable effort has been made to obtain accurate information and verify it, IC RUSS-INVEST or its affiliates makes no warranty, express or implied, as to the accuracy, completeness or correctness of the information and opinions contained herein. All such information, opinions and forecasts are subject to further change without notice. The forward-looking statements in this report are subject to risks, uncertainties and other factors that could cause actual results to differ materially from those stated in such statements. Neither we nor any of our respective agents, employees or advisors intend or have any duty or obligation to supply, amend, update or revise any of the forward-looking statements contained in this report. IC RUSS-INVEST, its directors and employees may have a position in any of the securities mentioned in this report. The report cannot be used on the territory of the USA, Canada, Great Britain, Japan, neither it can be a subject of national regulation of the states mentioned.

INVESTMENT COMPANY IC RUSS-INVESTwww.russ-invest.com**Moscow**

Telephone: +7(495) 363-93-80
Fax: +7(495) 363-93-90
E-mail: mail@russ-invest.com
Mailing address: 5-3/12 Nashchiokinsky
Pereulok, bldg. 4, 119019 Moscow

St-Petersburg

Telephone: +7(812) 337-55-37
Fax: +7(812) 337-55-37
E-mail: spb@russ-invest.com
Mailing address: 52, Fontanky
Embankment, 190002 St-Petersburg

Samara

Telephone: +7 (846) 262-75-52
Fax: +7 (846) 262-75-52
E-mail: sam@russ-invest.com
Mailing address: 443067, Самара, ул. Гагарина, 95

© 2007 | OJSC «IC RUSS-INVEST»

Licenses of FCFM №077-08757-000100 и №077-08755-001000

Licenses of FCFM №177-06310-100000 и №177-06312-010000

Licenses of FCFM №906