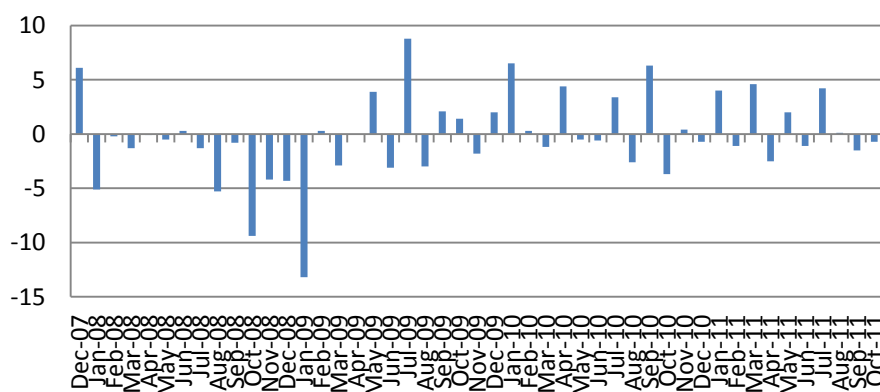


Ежедневный обзор мирового рынка акций

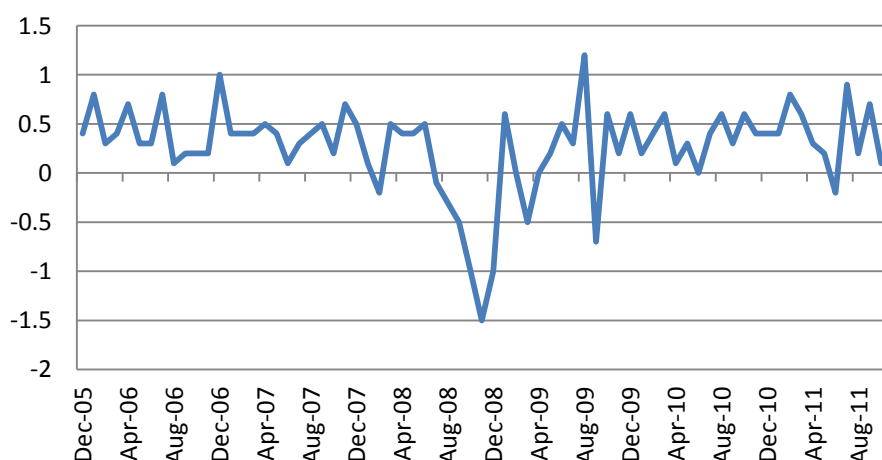
24 ноября 2011 г.

На рынках акций США по итогам сессии наблюдалось уверенное снижение котировок. Хуже рынка были акции нефтегазового и горнодобывающего секторов. Индекс S&P 500 понизился на 2.21%, индекс акций малой капитализации Russell 2000 – на 3.15%. Индекс волатильности VIX повысился на 6.29% до 33.98 п. Усиление напряженности в Европе, опасения ухудшения экономической ситуации в США оказали негативное влияние на рискованные активы. Давление на евро оказал провал аукциона по немецким облигациям.

Заказы на товары длительного пользования в октябре понизились на 0.7% против прогноза 1.2%.



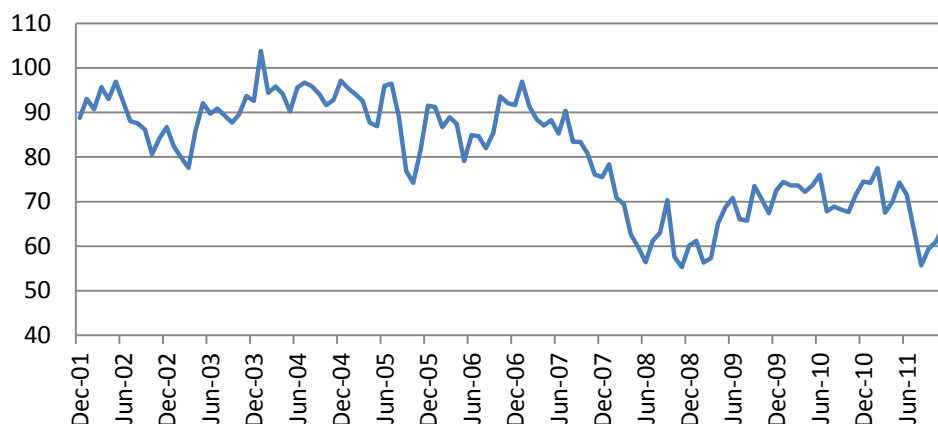
Индекс личных доходов граждан США в октябре вырос на 0.4% против прогноза 0.3%. Расходы сократились на 0.1% против прогноза 0.3%.



Основные индикаторы рынка		
CDS HY 5Y	823.11	+3.22%
ITX Crossover Euro	698.78	+5.58%
CDS Japan 5Y	123.17	+0.00%
CDS EM 5Y	106.82	-0.51%
CDS Russia 5Y	291.31	+7.84%
US Tsys 10Y	2.49%	-0.20%
US Tsys 5Y	1.21%	-0.10%
Brazil 10Y	3.35%	-1.78%
Germany 10Y	1.75%	-1.12%
EUR/USD	1.3371	+0.05%
USD/JPY	77.12	+0.32%
EUR/GBP	0.8597	+0.12%
Oil Brent	107.66	+0.60%
Gold	1696.6	-0.13%
Copper	7240	-1.23%
Nickel	17028	-3.03%
S&P 500	1165.5	+0.47%
Russell 2000	674.34	-3.15%
Bovespa	54972.08	-1.62%
Topix	708	-1.26%
Shanghai Comp	2,404.06	+0.38%
S&P/ASX 300	4,044.20	-0.17%
Sensex 30	15,556.44	-0.91%
Bovespa	54,972.08	-1.62%
DJ Euro Stoxx 50 Fu	2103	-1.87%
CAC Futures	2818	-1.81%
DAX Futures	5479.5	-1.40%
CBOE Put/Call	0.72	+7.46%
CBOE Buy/Write M	791.57	-1.59%
VIX	33.98	+6.29%
VSTOXX	40.9728	+3.57%

*На 10:00 мск, по данным Bloomberg

Индекс уверенности потребителей Университета Мичиган сократился до 64.1 п. против прогноза 64.5 п.



На азиатских биржах в четверг наблюдались смешанные настроения – информация о понижении норм обязательного резервирования для 6 региональных банков. Австралийский S&P/ASX 200 понизился на 0.17%, гонконгский Hang Seng – на 0.16%. Японский Nikkei на 9:50 мск потерял 1.8%. Шанхайские индексы по итогам дня прибавили в пределах 0.2%. Корейский Kospi прибавил 0.67%

Сегодня в Европе интерес будут представлять переговоры лидеров Германии, Франции и Италии относительно урегулирования долгового кризиса.

В США торги будут закрыты в связи с Днем Благодарения.

Подиндекс		
S&P 500		Изм.
CONS DISCRET	287.84	-5.41%
CONS STAPLES	311.48	-2.65%
ENERGY	478.52	-7.90%
FINANCIALS	157.44	-7.68%
HEALTH CARE	367.24	-4.51%
INDUSTRIALS	267.35	-6.64%
INFO TECH	389.43	-7.18%
MATERIALS	198.03	-7.46%
TELECOM SERV	118.11	-4.24%
UTILITIES	167.93	-3.89%

Наиболее активные акции в США*

JABIL CIRCUIT	18.36	10.31%
NABORS INDS LTD	16.22	-9.59%
ALPHA NATURAL RE	19.27	-9.36%
CLIFFS NATURAL R	59.96	-8.68%
US STEEL CORP	22.41	-8.53%
TERADYNE INC	11.82	-8.16%
MONSTER WORLDWID	6.89	-8.13%
NETFLIX INC	68.5	-8.02%
MEAD JOHNSON	71.03	+1.46%
LABORATORY CP	80.55	+1.58%
BIOGEN IDEC INC	109.9	+1.89%
MEDTRONIC INC	33.95	+2.04%
WALGREEN CO	32.09	+2.56%
DEERE & CO	74.72	+2.81%
GILEAD SCIENCES	39.64	+9.32%

Ежедневный обзор

В Европе продолжится сезон отчетности – выпустят отчет 3 компании индекса Bloomberg Europe 500.

Календарь макроэкономической статистики*						
Date Time		Event		Survey	Prior	Revised
11/21/2011 04:30	JN	All Industry Activity Index (MoM)	SEP	-1.00%	-0.50%	-0.30%
11/21/2011 09:00	EC	Euro-Zone Current Account nsa	SEP	--	-6.3B	--
11/21/2011 09:00	EC	ECB Euro-Zone Current Account SA	SEP	--	-5.0B	--
11/21/2011 13:30	US	Chicago Fed Nat Activity Index	OCT	0.19	-0.22	--
11/21/2011 14:30	EC	ECB Calls for Bids in 7-Day Main				
11/21/2011 15:00	US	Existing Home Sales	OCT	4.80M	4.91M	--
11/21/2011 15:00	US	Existing Home Sales MoM	OCT	-2.20%	-3.00%	--
11/21/2011 16:00	US	U.S. Fed to Sell USD8.00-8.75 Bln				
11/21/2011 18:00	US	U.S. to Sell USD35 Bln 2-Year Notes				
11/21/2011 18:00	US	The Washington Nationals and				
11/21/2011 18:00	US	HHS Secretary Kathleen Sebelius				
11/21/2011 19:00	US	U.S. Fed to Sell USD8.00-8.75 Bln				
11/21/2011 19:30	US	Fed's Lockhart to Speak on				
11/22/2011 10:15	EC	ECB Announces Allotment in 7-Day				
11/22/2011 10:30	EC	ECB's Weidmann Speaking in Berlin				
11/22/2011 13:30	US	GDP QoQ (Annualized)	3Q S	2.50%	2.50%	--
11/22/2011 13:30	US	Personal Consumption	3Q S	2.40%	2.40%	--
11/22/2011 13:30	US	GDP Price Index	3Q S	2.50%	2.50%	--
11/22/2011 13:30	US	Core PCE QoQ	3Q S	2.10%	2.10%	--
11/22/2011 14:00	US	The Federal Open Market				
11/22/2011 15:00	EC	Euro-Zone Consumer Confidence	NOV A	-21	-19.9	--
11/22/2011 15:00	US	Richmond Fed Manufact. Index	NOV	-1	-6	--
11/22/2011 16:00	EC	ECB's Coene Speaks at Financial				
11/22/2011 16:00	US	U.S. Fed to Purchase USD4.25-5.00				
11/22/2011 17:00	US	The Federal Open Market				
11/22/2011 17:30	US	The New America Foundation				
11/22/2011 18:00	US	Fed's Kocherlakota Speaks in				
11/22/2011 18:00	US	U.S. to Sell USD35 Bln 5-Year Notes				
11/22/2011 19:00	US	Minutes of FOMC Meeting				
11/22/2011 19:00	US	U.S. Fed to Purchase USD2.25-2.75				
11/22/2011 19:00	US	Fed Releases Minutes from Nov. 1-				
11/23/2011 02:30	CH	HSBC Flash China Manufacturing	NOV	--	51.1	--
11/23/2011 08:30	GE	PMI Manufacturing	NOV A	48.5	49.1	--
11/23/2011 08:30	GE	PMI Services	NOV A	50	50.6	--

Eurostoxx 600		
SX3P	357.56	-1.25%
SX4P	479.59	-4.59%
SX6P	260.04	-3.10%
SX7P	125.3	-6.37%
SX86P	99.59	-6.52%
SX8P	192.68	-3.95%
SXAP	257.55	-8.00%
SXDP	395.39	-0.48%
SXEP	317.84	-2.11%
SXFP	205.67	-4.82%
SXIP	126.63	-5.65%
SXKP	247.32	-2.97%
SXMP	152.52	-3.53%
SXNP	260.47	-4.64%
SXOP	211.49	-5.83%
SXPP	431.19	-6.48%
SXQP	402.08	-3.10%
SXRP	242.25	-2.34%
SXTP	106.3	-3.15%
SXXP	232.17	-3.66%

Наиболее активные акции в Европе*		
CABLE & WIRE	14.2	-19.59%
ALCATEL-LUCENT	1.141	-16.35%
RENEWABLE ENERGY	3.77	-14.32%
COMMERZBANK	1.17	-13.65%
KBC GROEP	8.368	-11.51%
MARINE HARVEST	2.22	-11.41%
ROYAL BK SCOTLAN	17.34	-11.35%
BANCO POPOLARE S	0.843	-10.89%
GIVAUDAN-REG	795	+4.26%
ZODIAC AEROSPACE	55.77	+5.55%
INTERMEDIATE CAP	221.6	+5.88%
ADMIRAL GROUP	865	+6.07%
PIRAEUS BANK	0.235	+6.82%
SUEDZUCKER AG	21.27	+9.53%
ARKEMA	45.25	+14.85%

Ежедневный обзор

11/23/2011 09:00	EC	PMI Composite	NOV A	46.1	46.5	--
11/23/2011 09:00	EC	PMI Manufacturing	NOV A	46.5	47.1	--
11/23/2011 09:00	EC	PMI Services	NOV A	46	46.4	--
11/23/2011 10:00	EC	ECB's Constancio Speaking in				
11/23/2011 10:00	EC	Industrial New Orders NSA (YoY)	SEP	6.10%	6.20%	--
11/23/2011 10:00	EC	Industrial New Orders SA (MoM)	SEP	-2.70%	1.90%	1.40%
11/23/2011 12:00	US	MBA Mortgage Applications	18-Nov	--	-10.00%	--
11/23/2011 13:30	US	Durable Goods Orders	OCT	-1.20%	-0.80%	-0.60%
11/23/2011 13:30	US	Durables Ex Transportation	OCT	0.00%	1.70%	1.80%
11/23/2011 13:30	US	Cap Goods Orders Nondef Ex Air	OCT	-1.00%	2.40%	--
11/23/2011 13:30	US	Cap Goods Ship Nondef Ex Air	OCT	--	-0.90%	--
11/23/2011 13:30	US	Personal Income	OCT	0.30%	0.10%	--
11/23/2011 13:30	US	Personal Spending	OCT	0.30%	0.60%	--
11/23/2011 13:30	US	Initial Jobless Claims	19-Nov	390K	388K	--
11/23/2011 13:30	US	Continuing Claims	12-Nov	3610K	3608K	--
11/23/2011 14:55	US	U. of Michigan Confidence	NOV F	64.5	64.2	--
11/23/2011 15:30	US	DOE U.S. Crude Oil Inventories	18-Nov	--	-1056K	--
11/23/2011 15:30	US	DOE Cushing OK Crude Inventory	18-Nov	--	890K	--
11/23/2011 15:30	US	DOE U.S. Distillate Inventory	18-Nov	--	-2136K	--
11/23/2011 15:30	US	DOE U.S. Gasoline Inventories	18-Nov	--	992K	--
11/23/2011 15:30	US	DOE U.S. Refinery Utilization	18-Nov	--	2.20%	--
11/23/2011 15:30	US	DOE Crude Oil Implied Demand	18-Nov	--	14610	--
11/23/2011 15:30	US	DOE Distillate Implied Demand	18-Nov	--	5137.1	--
11/23/2011 15:30	US	DOE Gasoline Implied Demand	18-Nov	--	9154.1	--
11/23/2011 16:00	US	The International Energy Agency				
11/23/2011 16:00	US	Kansas City Fed Manf. Activity	NOV	9	8	--
11/23/2011 18:00	US	U.S. to Sell USD29 Bln 7-Year Notes				
11/23/2011 18:00	US	The Small Business Administration				
11/24/2011 07:00	GE	GDP nsa (YoY)	3Q F	2.50%	--	--
11/24/2011 07:00	GE	Domestic Demand	3Q	0.50%	0.40%	--
11/24/2011 07:00	GE	Exports	3Q	1.60%	2.30%	--
11/24/2011 07:00	GE	Capital Investment	3Q	1.20%	0.30%	--
11/24/2011 07:00	GE	Government Spending	3Q	0.20%	0.20%	--
11/24/2011 07:00	GE	Construction Investment	3Q	-0.10%	-0.90%	--
11/24/2011 07:00	GE	Imports	3Q	1.50%	3.20%	--
11/24/2011 07:00	GE	Private Consumption	3Q	0.50%	-0.70%	--
11/24/2011 07:00	GE	GDP s.a. (QoQ)	3Q F	0.50%	0.50%	--
11/24/2011 07:00	GE	GDP wda (YoY)	3Q F	2.60%	--	--
11/24/2011 09:00	GE	IFO - Business Climate	NOV	105.2	106.4	--
11/24/2011 09:00	GE	IFO - Current Assessment	NOV	115	116.7	--
11/24/2011 09:00	GE	IFO - Expectations	NOV	96	97	--
11/24/2011 09:30	UK	GDP (QoQ)	3Q P	0.50%	0.50%	--
11/24/2011 09:30	UK	GDP (YoY)	3Q P	0.50%	0.50%	--

Ежедневный обзор

11/24/2011 09:30	UK	Private Consumption	3Q P	0.20%	-0.80%	--
11/24/2011 09:30	UK	Government Spending	3Q P	0.50%	1.10%	--
11/24/2011 09:30	UK	Gross Fixed Capital Formation	3Q P	1.10%	1.70%	--
11/24/2011 09:30	UK	Exports	3Q P	0.80%	-1.30%	--
11/24/2011 09:30	UK	Imports	3Q P	0.70%	-0.30%	--
11/24/2011 12:40	EC	ECB's Praet Speaking in Brussels				
11/24/2011 18:30	EC	ECB's Gonzalez-Paramo Speaks in				
11/24/2011 23:00	EC	ECB's Gonzalez-Paramo Speaking in				
11/24/2011 23:30	JN	Tokyo CPI YoY	NOV	-0.50%	-0.50%	--
11/24/2011 23:30	JN	Tokyo CPI Ex-Fresh Food YoY	NOV	-0.30%	-0.40%	--
11/24/2011 23:30	JN	Tokyo CPI Ex Food, Energy YoY	NOV	-0.90%	-1.00%	--
11/25/2011 01:35	CH	MNI November Business Condition				
11/27/2011 02:00	CH	Industrial Profits YTD YoY	OCT	--	27.00%	--
11/28/2011	EC	EU's Van Rompuy, Barroso Meet				
11/28/2011	GE	Consumer Price Index (MoM)	NOV P	--	0.00%	--
11/28/2011	GE	Consumer Price Index (YoY)	NOV P	--	2.50%	--
11/28/2011 07:00	GE	GfK Consumer Confidence Survey	DEC	--	5.3	--
11/28/2011 09:00	EC	Euro-Zone M3 s.a. 3 mth ave.	OCT	--	2.60%	--
11/28/2011 09:00	EC	Euro-Zone M3 s.a. (YoY)	OCT	--	3.10%	--
11/28/2011 10:00	EC	EC OECD November Economic				
11/28/2011 14:30	EC	ECB Calls for Bids in 7-Day Main				
11/28/2011 15:00	US	New Home Sales	OCT	310K	313K	--
11/28/2011 15:00	US	New Home Sales MoM	OCT	-1.00%	5.70%	--
11/28/2011 15:30	US	Dallas Fed Manf. Activity	NOV	--	2.3	--
11/28/2011 16:00	US	U.S. Fed to Purchase USD4.25-5.00				
11/29/2011 05:00	US	Fed's Yellen Gives Opening				
11/29/2011 10:00	EC	Business Climate Indicator	NOV	--	-0.18	--
11/29/2011 10:00	EC	Euro-Zone Consumer Confidence	NOV F	--	--	--
11/29/2011 10:00	EC	Euro-Zone Economic Confidence	NOV	--	94.8	--
11/29/2011 10:00	EC	Euro-Zone Indust. Confidence	NOV	--	-6.6	--
11/29/2011 10:00	EC	Euro-zone Services Confidence	NOV	--	0.2	--
11/29/2011 10:15	EC	ECB Announces Allotment in 7-Day				
11/29/2011 14:00	US	S&P/CS 20 City MoM% SA	SEP	0.00%	-0.05%	--
11/29/2011 14:00	US	S&P/CS Composite-20 YoY	SEP	-3.00%	-3.80%	--
11/29/2011 14:00	US	S&P/CaseShiller Home Price Ind	SEP	--	142.84	--
11/29/2011 14:00	US	S&P/Case-Shiller US HPI YOY%	3Q	--	-5.88%	--
11/29/2011 14:00	US	S&P/Case-Shiller US HPI	3Q	--	130.12	--
11/29/2011 14:30	EC	ECB Calls for Bids in 3-Month				
11/29/2011 15:00	US	Consumer Confidence	NOV	43.9	39.8	--
11/29/2011 15:00	US	House Price Index MoM	SEP	--	-0.10%	--
11/29/2011 15:00	US	House Price Purchase Index QoQ	3Q	--	-0.60%	--
11/29/2011 16:00	US	U.S. Fed to Purchase USD2.25-2.75				
11/29/2011 23:50	JN	Industrial Production (MoM)	OCT P	--	-3.30%	--

Ежедневный обзор

11/29/2011 23:50	JN	Industrial Production YOY%	OCT P	--	-3.30%	--
11/30/2011 00:00	US	Fed's Kocherlakota Speaks to				
11/30/2011 00:01	UK	GfK Consumer Confidence Survey	NOV	--	-32	--
11/30/2011 00:30	EC	ECB's Stark Speaking in Dallas				
11/30/2011 01:00	US	Fed's Kocherlakota Speaks on				
11/30/2011 05:00	US	Fed's Beige Book				
11/30/2011 10:00	EC	Euro-Zone CPI Estimate (YoY)	NOV	--	3.00%	--
11/30/2011 10:00	EC	Euro-Zone Unemployment Rate	OCT	--	10.20%	--
11/30/2011 10:15	EC	ECB Announces Allotment in 3-				
11/30/2011 12:30	US	Challenger Job Cuts YoY	NOV	--	12.60%	--
11/30/2011 13:15	US	ADP Employment Change	NOV	125K	110K	--
11/30/2011 13:30	US	Nonfarm Productivity	3Q F	3.10%	3.10%	--
11/30/2011 13:30	US	Unit Labor Costs	3Q F	-2.40%	-2.40%	--
11/30/2011 14:45	US	Chicago Purchasing Manager	NOV	58.4	58.4	--
11/30/2011 15:00	US	Pending Home Sales MoM	OCT	0.00%	-4.60%	--
11/30/2011 15:00	US	Pending Home Sales YoY	OCT	--	7.90%	--
11/30/2011 15:00	US	NAPM-Milwaukee	NOV	--	55.5	--
11/30/2011 15:30	US	DOE U.S. Crude Oil Inventories	25-Nov	--	--	--
11/30/2011 15:30	US	DOE Cushing OK Crude Inventory	25-Nov	--	--	--
11/30/2011 15:30	US	DOE U.S. Distillate Inventory	25-Nov	--	--	--
11/30/2011 15:30	US	DOE U.S. Gasoline Inventories	25-Nov	--	--	--
11/30/2011 15:30	US	DOE U.S. Refinery Utilization	25-Nov	--	--	--
11/30/2011 15:30	US	DOE Crude Oil Implied Demand	25-Nov	--	--	--
11/30/2011 15:30	US	DOE Distillate Implied Demand	25-Nov	--	--	--
11/30/2011 15:30	US	DOE Gasoline Implied Demand	25-Nov	--	--	--
11/30/2011 16:00	US	U.S. Fed to Sell USD8.00-8.75 Bln				
11/30/2011 19:00	US	Fed Releases Beige Book Economic				
12/01/2011	US	ICSC Chain Store Sales YoY	NOV	--	3.70%	--
12/01/2011 01:00	CH	PMI Manufacturing	NOV	--	50.4	--
12/01/2011 02:30	CH	HSBC Manufacturing PMI	NOV	--	51	--
12/01/2011 08:00	EC	ECB's Draghi Speaking in Brussels				
12/01/2011 08:55	GE	PMI Manufacturing	NOV F	--	--	--
12/01/2011 09:00	EC	PMI Manufacturing	NOV F	--	--	--
12/01/2011 09:30	UK	PMI Manufacturing	NOV	--	47.4	--
12/01/2011 13:30	US	Initial Jobless Claims	25-Nov	--	--	--
12/01/2011 13:30	US	Continuing Claims	18-Nov	--	--	--
12/01/2011 14:00	US	U.S. Treasury Holds Economic				
12/01/2011 14:45	US	Bloomberg Consumer Comfort	27-Nov	--	--	--
12/01/2011 15:00	US	Construction Spending MoM	OCT	0.30%	0.20%	--
12/01/2011 15:00	US	ISM Manufacturing	NOV	52	50.8	--
12/01/2011 15:00	US	ISM Prices Paid	NOV	45	41	--
12/01/2011 15:30	US	EIA Natural Gas Storage Change	25-Nov	--	--	--
12/01/2011 22:00	US	Total Vehicle Sales	NOV	13.50M	13.20M	--

Ежедневный обзор

12/01/2011 22:00	US	Domestic Vehicle Sales	NOV	10.37M	10.29M	--
12/02/2011 10:00	EC	Euro-Zone PPI (MoM)	OCT	--	0.30%	--
12/02/2011 10:00	EC	Euro-Zone PPI (YoY)	OCT	--	5.80%	--
12/02/2011 13:30	US	Change in Nonfarm Payrolls	NOV	116K	80K	--
12/02/2011 13:30	US	Change in Private Payrolls	NOV	135K	104K	--
12/02/2011 13:30	US	Change in Manufact. Payrolls	NOV	5K	5K	--
12/02/2011 13:30	US	Unemployment Rate	NOV	9.00%	9.00%	--
12/02/2011 13:30	US	Underemployment Rate (U6)	NOV	--	--	--
12/03/2011 01:00	CH	China Non-manufacturing PMI	NOV	--	57.7	--
12/05/2011 02:30	CH	China HSBC Services PMI	NOV	--	54.1	--
12/05/2011 08:55	GE	PMI Services	NOV F	--	--	--
12/05/2011 09:00	EC	PMI Composite	NOV F	--	--	--
12/05/2011 09:00	EC	PMI Services	NOV F	--	--	--
12/05/2011 09:30	EC	Sentix Investor Confidence	DEC	--	-21.2	--
12/05/2011 10:00	EC	Euro-Zone Retail Sales (MoM)	OCT	--	-0.70%	-0.70%
12/05/2011 10:00	EC	Euro-Zone Retail Sales (YoY)	OCT	--	-1.50%	-1.30%
12/05/2011 14:30	EC	ECB Calls for Bids in 7-Day Main				
12/05/2011 15:00	US	ISM Non-Manf. Composite	NOV	--	52.9	--
12/05/2011 15:00	US	Factory Orders	OCT	--	0.30%	--
12/06/2011 10:00	EC	Euro-Zone GDP s.a. (QoQ)	3Q P	--	0.20%	--
12/06/2011 10:00	EC	Euro-Zone GDP s.a. (YoY)	3Q P	--	1.40%	--
12/06/2011 10:00	EC	Euro-Zone Household Cons (QoQ)	3Q P	--	-0.20%	--
12/06/2011 10:00	EC	Euro-Zone Gross Fix Cap (QoQ)	3Q P	--	0.20%	0.10%
12/06/2011 10:00	EC	Euro-Zone Govt Expend (QoQ)	3Q P	--	-0.20%	-0.10%
12/06/2011 10:15	EC	ECB Announces Allotment in 7-Day				
12/06/2011 11:00	GE	Factory Orders YoY (nsa)	OCT	--	2.40%	--
12/06/2011 11:00	GE	Factory Orders MoM (sa)	OCT	--	-4.30%	--
12/07/2011 05:00	JN	Leading Index CI	OCT P	--	91.5	--
12/07/2011 05:00	JN	Coincident Index CI	OCT P	--	89	--
12/07/2011 09:30	UK	Industrial Production (MoM)	OCT	--	0.00%	--
12/07/2011 09:30	UK	Industrial Production (YoY)	OCT	--	-0.70%	--
12/07/2011 09:30	UK	Manufacturing Production (MoM)	OCT	--	0.20%	--
12/07/2011 09:30	UK	Manufacturing Production (YoY)	OCT	--	2.00%	--
12/07/2011 10:00	EC	ECB Announces Allotment in 3-				
12/07/2011 11:00	GE	Industrial Prod. YoY (nsa wda)	OCT	--	5.40%	--
12/07/2011 11:00	GE	Industrial Production MoM (sa)	OCT	--	-2.70%	--
12/07/2011 15:00	UK	NIESR GDP Estimate	NOV	--	0.50%	--
12/07/2011 15:30	US	DOE U.S. Crude Oil Inventories	2-Dec	--	--	--
12/07/2011 15:30	US	DOE Cushing OK Crude Inventory	2-Dec	--	--	--
12/07/2011 15:30	US	DOE U.S. Distillate Inventory	2-Dec	--	--	--
12/07/2011 15:30	US	DOE U.S. Gasoline Inventories	2-Dec	--	--	--
12/07/2011 15:30	US	DOE U.S. Refinery Utilization	2-Dec	--	--	--
12/07/2011 15:30	US	DOE Crude Oil Implied Demand	2-Dec	--	--	--

Ежедневный обзор

12/07/2011 15:30	US	DOE Distillate Implied Demand	2-Dec	--	--	--
12/07/2011 15:30	US	DOE Gasoline Implied Demand	2-Dec	--	--	--
12/07/2011 20:00	US	Consumer Credit	OCT	--	\$7.386B	--
12/08/2011 12:00	UK	BOE Asset Purchase Target	DEC	--	275B	--
12/08/2011 12:00	UK	BOE ANNOUNCES RATES	8-Dec	0.50%	0.50%	--
12/08/2011 12:45	EC	ECB Announces Interest Rates	8-Dec	--	1.25%	--
12/08/2011 13:30	EC	ECB Monthly News Conference				
12/08/2011 13:30	US	Initial Jobless Claims	2-Dec	--	--	--
12/08/2011 13:30	US	Continuing Claims	25-Nov	--	--	--
12/08/2011 14:45	US	Bloomberg Consumer Comfort	4-Dec	--	--	--
12/08/2011 15:00	US	Wholesale Inventories	OCT	--	-0.10%	--
12/08/2011 15:30	EC	ECB's Constancio Speaks at				
12/08/2011 23:50	JN	Nominal GDP (QoQ)	3Q F	--	1.40%	--
12/08/2011 23:50	JN	GDP Annualized	3Q F	--	6.00%	--
12/09/2011	CH	Industrial Production YTD YoY	NOV	--	14.10%	--
12/09/2011	CH	Industrial Production (YoY)	NOV	--	13.20%	--
12/09/2011	CH	Fixed Assets Inv Excl. Rural YTD YoY	NOV	--	24.90%	--
12/09/2011	CH	Retail Sales YTD YoY	NOV	--	17.00%	--
12/09/2011	CH	Retail Sales (YoY)	NOV	--	17.20%	--
12/09/2011 02:00	CH	Consumer Price Index (YoY)	NOV	--	5.50%	--
12/09/2011 02:00	CH	Producer Price Index (YoY)	NOV	--	5.00%	--
12/09/2011 07:00	GE	Consumer Price Index (MoM)	NOV F	--	--	--
12/09/2011 07:00	GE	Consumer Price Index (YoY)	NOV F	--	--	--
12/09/2011 07:00	GE	CPI - EU Harmonised (MoM)	NOV F	--	--	--
12/09/2011 07:00	GE	CPI - EU Harmonised (YoY)	NOV F	--	--	--
12/09/2011 07:00	GE	Labor Costs Workday Adj (YoY)	3Q	--	4.40%	--
12/09/2011 07:00	GE	Labor Costs Seas. Adj. (QoQ)	3Q	--	1.40%	--
12/09/2011 07:00	GE	Trade Balance	OCT	--	17.4B	--
12/09/2011 13:30	US	Trade Balance	OCT	--	-\$43.1B	--
12/09/2011 14:55	US	U. of Michigan Confidence	DEC P	--	--	--
12/10/2011	CH	Trade Balance (USD)	NOV	--	\$17.03B	--
12/10/2011	CH	Exports YoY%	NOV	--	15.90%	--
12/10/2011	CH	Imports YoY%	NOV	--	28.70%	--
09-10 DEC	EC	ECB Publishes Dec. Monthly Report				
09-16 DEC	GE	Wholesale Price Index (MoM)	NOV	--	-1.00%	--
09-16 DEC	GE	Wholesale price Index (YoY)	NOV	--	5.00%	--
10-14 DEC	GE	Germany First Quarter Manpower				
11/25/2011 12/05	GE	Import Price Index (MoM)	OCT	-0.20%	0.60%	--
11/25/2011 12/05	GE	Import Price Index (YoY)	OCT	6.90%	6.90%	--
11/28/2011 12/02	GE	Retail Sales (MoM)	OCT	--	0.40%	0.30%
11/28/2011 12/02	GE	Retail Sales (YoY)	OCT	--	0.30%	--
25-28 NOV	CH	Leading Index	OCT	--	100.43	--

Заявление об ограничении ответственности: Настоящие обзоры подготовлены в информационных целях. Они ни в коем случае не являются и не должны рассматриваться как предложение купить или продать соответствующие ценные бумаги. Информация, содержащаяся в данных обзорах, получена из вызывающих доверия открытых источников. Несмотря на то, что при подготовке обзоров были предприняты необходимые меры для получения достоверной информации, ИК РУСС-ИНВЕСТ не исключает возможность включения в обзор ошибочной информации, предоставленной соответствующими источниками, и не несет за это ответственности. ИК РУСС-ИНВЕСТ, его работники и клиенты могут быть заинтересованы в покупке или продаже ценных бумаг, упомянутых в обзорах.

www.russ-invest.com**Москва**

Тел: +7(495) 363-93-80

Факс: +7(495) 363-93-90

E-mail: mail@russ-invest.com

Адрес: Москва, 119019, 5-3/12

Нащокинский переулок

Санкт-Петербург

Тел: +7(812) 337-55-37

Факс: +7(812) 337-55-37

E-mail: spb@russ-invest.com

Адрес: 190002, СПб, Набережная р.

Фонтанки, 52

Самара

Телефон: +7 (846) 262-75-52

Факс: +7 (846) 262-75-52

E-mail: sam@russ-invest.com

Адрес: 443067, Самара, ул. Гагарина,

дом 95

© 2007 | ОАО «ИК РУСС-ИНВЕСТ»

Лицензия ФСФР №077-08757-000100 и №077-08755-001000

Лицензия ФСФР №177-06310-100000 и №177-06312-010000

Лицензия ФСФР №906