

US exchanges were closed on Monday due to the observance of the Labour Day.

Asian markets fell on Tuesday. Hang Seng lost 1.64%, Nikkei was down by 2.21%. S&P/ASX declined by 1.6%. Kospi lost 1.07%. Shanghai stock indices closed on average lower by 0.5%.

The European stock indices futures were slightly up in the morning - Dow Jones Stoxx 50 futures added 0.37% while Dax futures was up by 0.61%. S&P futures lost 1.79%.

IIQ GDP data for Europe and Non-Manufacturing ISM, due at 14:00 GMT will be in focus today.

Macro Indicators		
CDS HY 5Y	491.08	+1.11%
ITX Crossover Euro	394.45	+4.04%
CDS Japan 5Y	91.33	+0.18%
CDS EM 5Y	112.56	-0.04%
CDS Russia 5Y	150.69	+1.15%
US Tsys 10Y	3.09%	+0.01%
US Tsys 5Y	1.64%	+0.01%
Brazil 10Y	3.60%	-0.18%
Germany 10Y	2.42%	-0.01%
EUR/USD	1.4076	-0.57%
USD/JPY	79.03	+0.13%
EUR/GBP	0.8739	+0.39%
Oil Brent	116.83	-0.37%
Gold	1597.8	+0.48%
Copper	9672	+0.44%
Nickel	24126	-0.21%
S&P 500	1309	-0.46%
Russell 2000	828.78	+0.66%
Bovespa	59478.01	-0.34%
Topix	859.5	+0.06%
Shanghai Comp	2,817.18	-0.11%
S&P/ASX 300	4,477.10	+0.08%
Sensex 30	18,594.93	+0.18%
Bovespa	59,478.01	-0.34%
DJ Euro Stoxx 50 F	2681	-0.74%
CAC Futures	3731.5	-0.63%
DAX Futures	7250	+0.08%
CBOE Put/Call	0.64	-23.81%
CBOE Buy/Write M	832.62	-0.04%
VIX	19.53	-6.11%
VSTOXX	28.1168	+3.10%

Factor Assessment		
Factor	Grade	Prev. Grade
US credit risks	3	3
Fed Activity	3	5
Corporate news	2	6
Economic statistics	2	1
Inflation concerns	4	4
China tightening	1	2
European Risks	9	7
MENA crisis	2	6
Japan EQ	1	5

Daily Market Report

S&P 500	Last	Change 1D	Change 5D	Change YTD	P/E	P/CF	P/B
Sub-index							
CONS DISCRET	284.3	-0.25%	-0.25%	-4%	14.91	0.95	2.70
CONS STAPLES	313.0	+0.55%	+0.55%	+3%	15.25	0.92	3.32
ENERGY	489.4	+0.36%	+0.36%	-3%	11.53	0.87	1.85
FINANCIALS	168.5	-1.92%	-1.92%	-22%	10.79	1.30	0.87
HEALTH CARE	374.0	+0.56%	+0.56%	+3%	11.73	1.10	2.29
INDUSTRIALS	265.9	-0.13%	-0.13%	-12%	13.41	1.02	2.28
INFO TECH	377.8	-0.53%	-0.53%	-7%	13.15	2.00	3.03
MATERIALS	213.1	+0.28%	+0.28%	-11%	12.89	1.03	2.30
TELECOM SERV	121.1	-1.49%	-1.49%	-6%	17.59	1.11	1.68
UTILITIES	168.0	+0.86%	+0.86%	+5%	13.12	1.15	1.48

DJIA Eurostoxx 600		
SX3P	344.94	-3.24%
SX4P	458.66	-4.72%
SX6P	245.7	-3.50%
SX7P	130.11	-5.90%
SX86P	108.27	-2.57%
SX8P	176.82	-4.50%
SXAP	252.86	-5.84%
SXDP	380.91	-2.75%
SXEP	274.04	-4.21%
SXFP	217.26	-3.63%
SXIP	121.23	-5.41%
SXKP	232.32	-3.50%
SXMP	146.54	-3.55%
SXNP	256.96	-5.60%
SXOP	211.88	-4.66%
SXPP	440.52	-4.68%
SXQP	379.52	-3.21%
SXRP	219.93	-3.55%
SXTP	102.61	-3.23%
SXXP	223.45	-4.14%

Technical view

S&P 500 Index, daily



The S&P 500 has rebounded from the 1100 support level. Bounce looks possible with resistance around 1260, 1300.

A pessimistic midterm target seems to be around 1020.

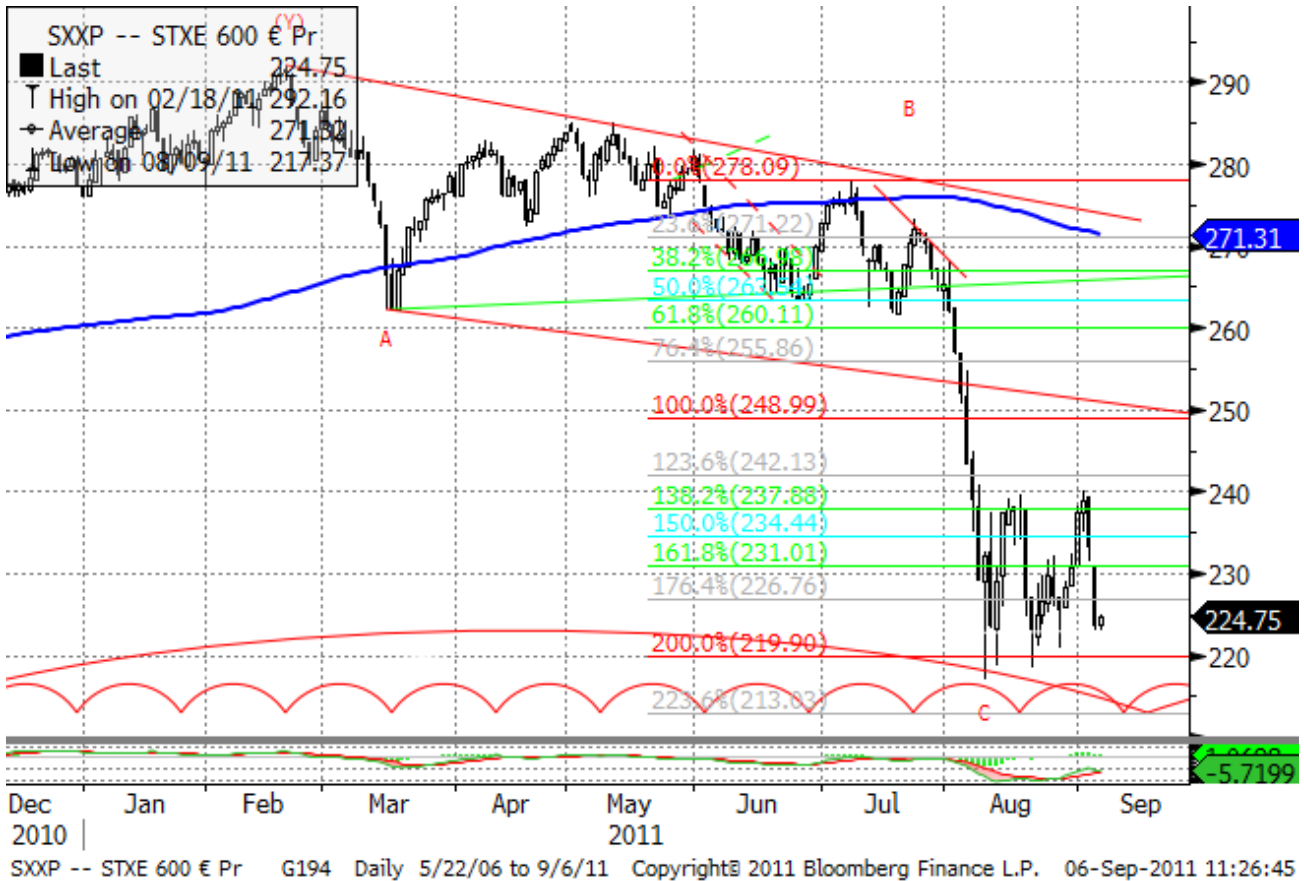
In the mid-term chart a “head & shoulders” pattern seems to have finished.

Current support levels are at 1180, 1130, 1092, 1041, 1010, 980, 950, 870.

Resistance levels: 1260, 1352, 1365, 1400.

Daily Market Report

Dow Jones Stoxx 600 Europe Index, daily



The index has reached 220 minimum of June 2010 and bullish candlestick pattern has been formed.

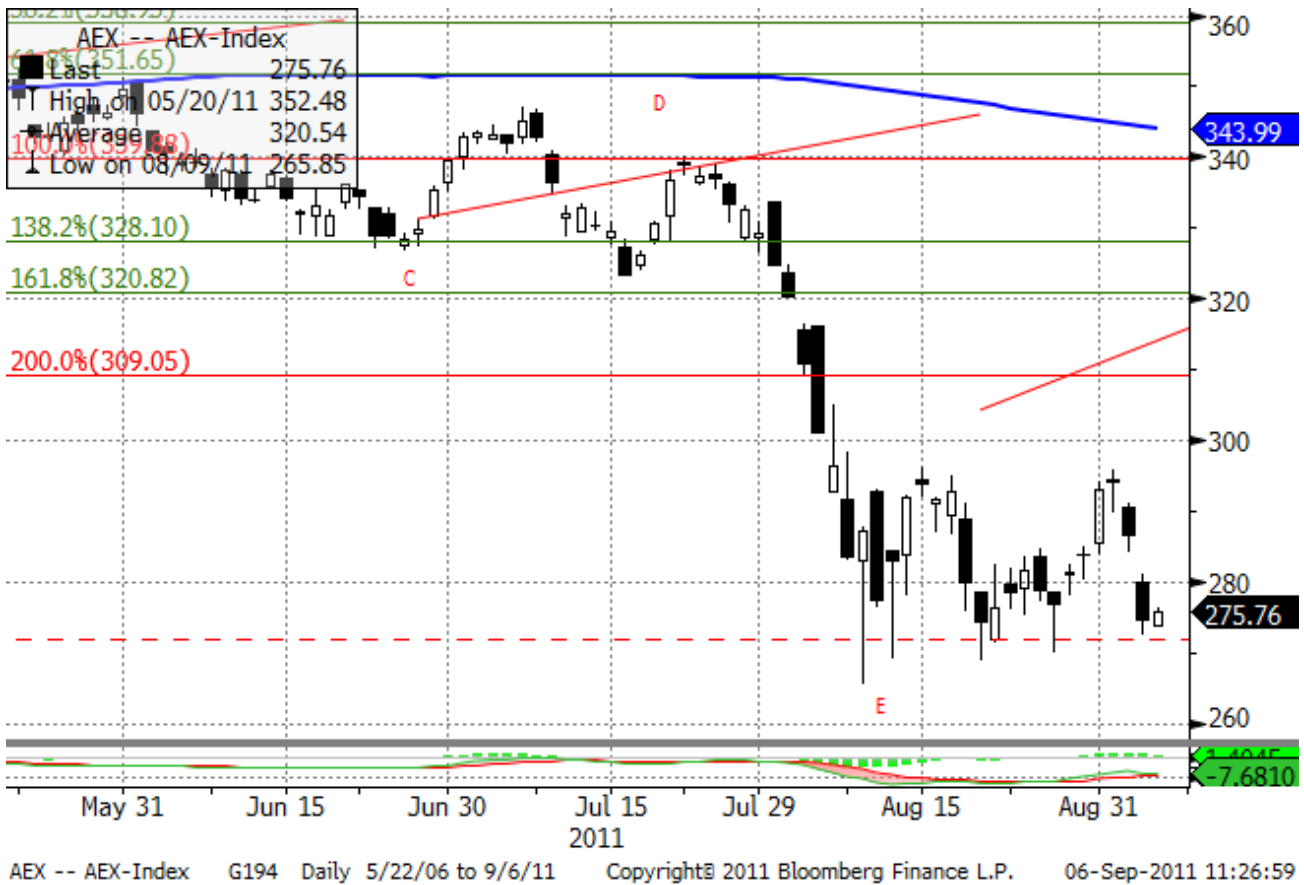
If the support is broken down, 200 will be another major support. However, bounce to 250, 260 is likely to take place in a few days.

Important support levels: 220, 200.

Important resistance levels – 248, 262, 273, 278, 293, 302.

Daily Market Report

AEX, daily



Support levels – 270, 200.

Resistance levels – 309, 320, 347, 352.

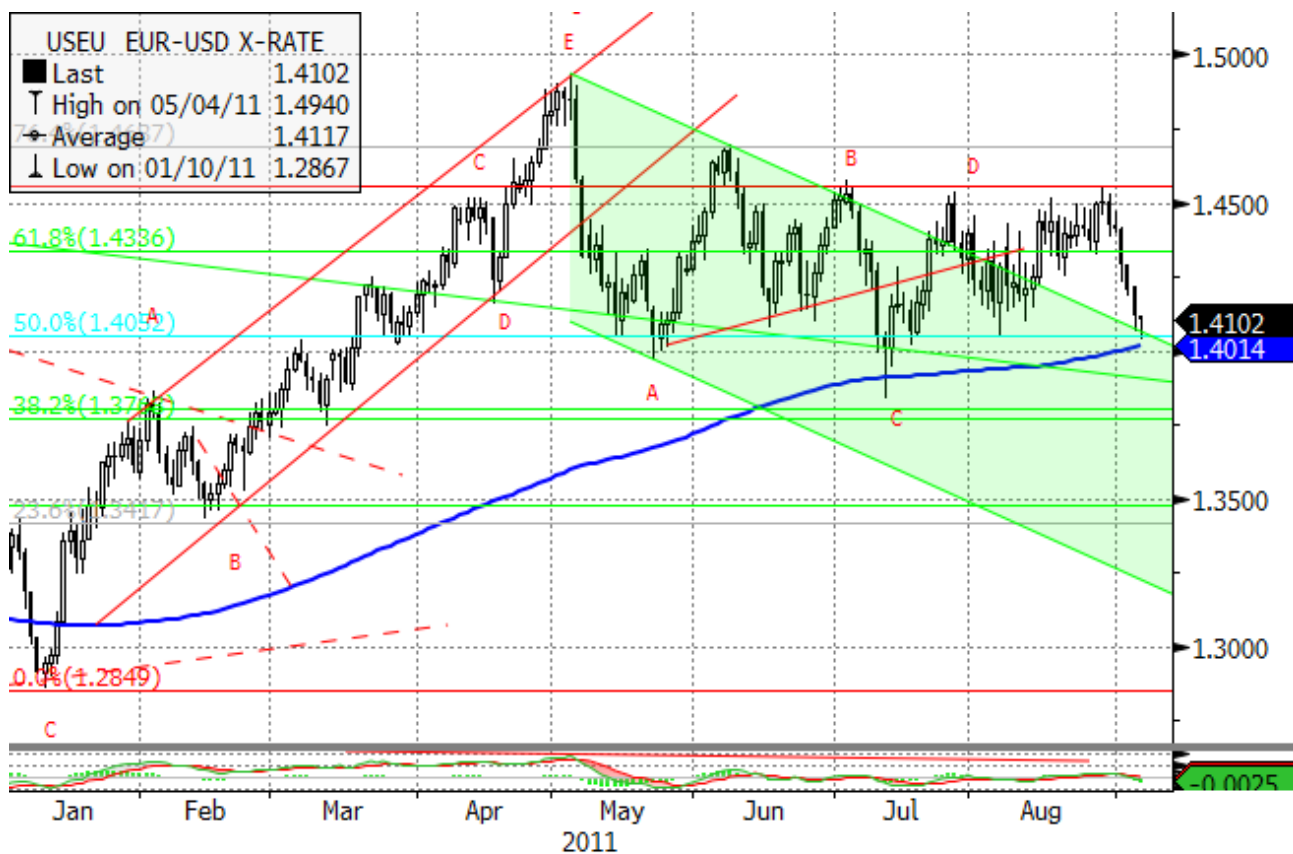
Long term trend – flat.

Mid-term trend – down.

Short-term trend – down.

Daily Market Report

EURUSD, daily



EURUSD has been in a long term flat. The long term reversal may finally lead us to new lows at 1.17 later this year.

However, If 1.455 level is broken, new highs above 1.5 will be a target.

Likely resistance zones – 1.455, 1.47, 1.4940, 1.5255.

Major support zones – 1.402, 1.385, 1.3768, 1.35.

Disclaimer. This report was prepared and provided for information purposes only under the condition it will not form the sole basis for any investment decision. It does not constitute an offer and should not be considered as an offer, or solicitation of an offer, to buy or sell any securities. The information and opinions contained in this report have been received from sources believed to be reliable. While every reasonable effort has been made to obtain accurate information and verify it, IC RUSS-INVEST or its affiliates makes no warranty, express or implied, as to the accuracy, completeness or correctness of the information and opinions contained herein. All such information, opinions and forecasts are subject to further change without notice. The forward-looking statements in this report are subject to risks, uncertainties and other factors that could cause actual results to differ materially from those stated in such statements. Neither we nor any of our respective agents, employees or advisors intend or have any duty or obligation to supply, amend, update or revise any of the forward-looking statements contained in this report. IC RUSS-INVEST, its directors and employees may have a position in any of the securities mentioned in this report. The report cannot be used on the territory of the USA, Canada, Great Britain, Japan, neither it can be a subject of national regulation of the states mentioned.

INVESTMENT COMPANY IC RUSS-INVEST

www.russ-invest.com

Moscow

Telephone: +7(495) 363-93-80
Fax: +7(495) 363-93-90
E-mail: mail@russ-invest.com
Mailing address: 5-3/12 Nashchiokinsky
Pereulok, bldg. 4, 119019 Moscow

St-Petersburg

Telephone: +7(812) 337-55-37
Fax: +7(812) 337-55-37
E-mail: spb@russ-invest.com
Mailing address: 52, Fontanky
Embankment, 190002 St-Petersburg

Samara

Telephone: +7 (846) 262-75-52
Fax: +7 (846) 262-75-52
E-mail: sam@russ-invest.com
Mailing address: 443067, Самара, ул. Гагарина, 95

© 2007 | OJSC «IC RUSS-INVEST»

Licenses of FCFM №077-08757-000100 и №077-08755-001000

Licenses of FCFM №177-06310-100000 и №177-06312-010000

Licenses of FCFM №906