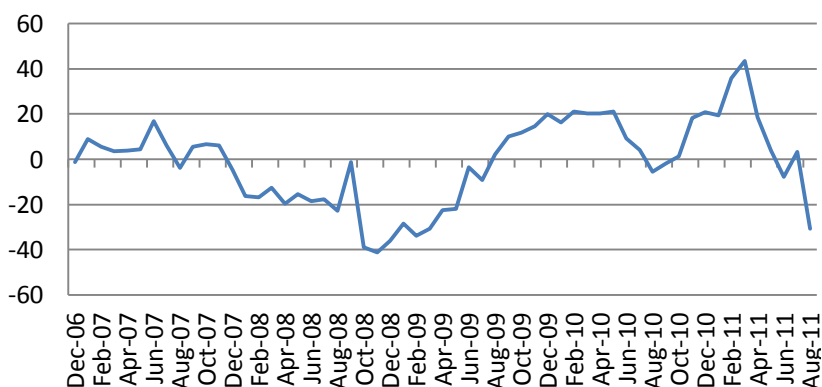


## Ежедневный обзор мирового рынка акций

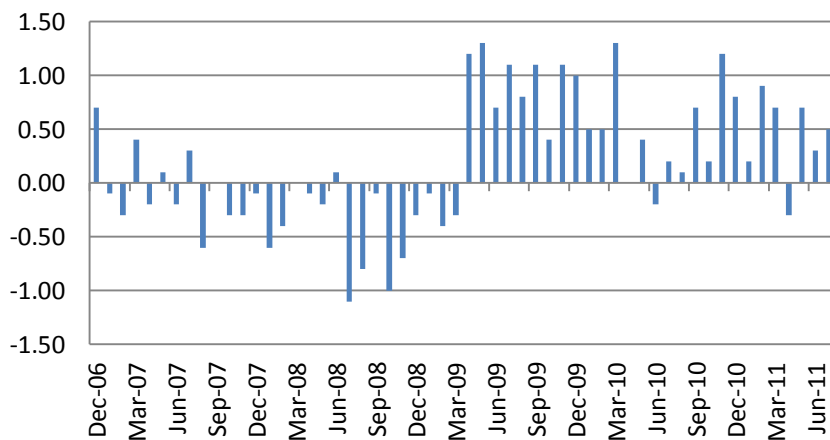
19 августа 2011 г.

На рынках акций США в четверг наблюдался обвал котировок. Индекс S&P 500 рухнул на 4.46%, индекс акций малой капитализации Russell 2000 – на 5.9%. Паника в Европе и негативные макроэкономические данные в США способствовали распространению пессимизма среди инвесторов. В аутсайдерах были акции высокотехнологичного сектора (-0.8%), в лидерах - телекоммуникационного сектора (+1.6%). Индекс волатильности VIX понизился на 3.87% до 31.58.

Индекс активности ФРБ Филадельфии в августе неожиданно рухнул до уровня -30.7 п.



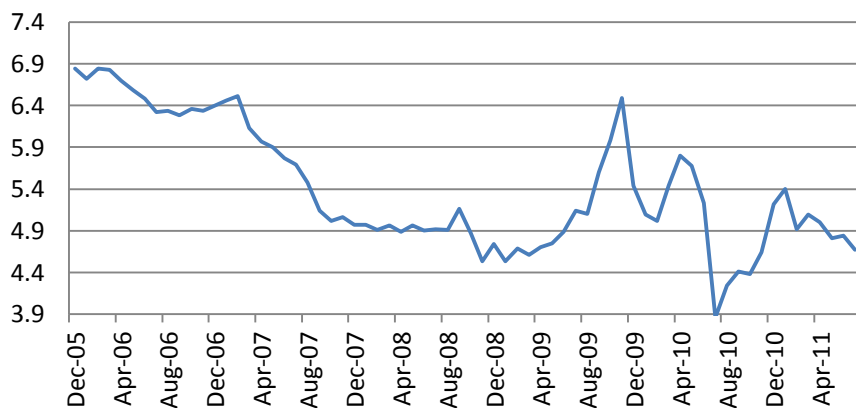
Индекс опережающих индикаторов в июле вырос на 0.5% за счет хороших данных по заявкам на пособие по безработице и низким ставкам.



Основные индикаторы рынка		
CDS HY 5Y	667.27	+8.58%
ITX Crossover Euro	572.54	+7.23%
CDS Japan 5Y	103.64	-0.98%
CDS EM 5Y	109.51	-1.16%
CDS Russia 5Y	192.52	+7.39%
US Tsys 10Y	2.48%	+0.20%
US Tsys 5Y	1.13%	+0.09%
Brazil 10Y	3.19%	-0.36%
Germany 10Y	1.80%	-0.01%
EUR/USD	1.4296	-0.17%
USD/JPY	76.54	-0.05%
EUR/GBP	0.8680	+0.18%
Oil Brent	105.96	-0.96%
Gold	1848.4	+1.45%
Copper	8770	-2.18%
Nickel	21260	-2.96%
S&P 500	1133	-0.92%
Russell 2000	662.51	-5.90%
Bovespa	53134.1	-3.52%
Topix	752	-2.02%
Shanghai Comp	2,516.39	-1.68%
S&P/ASX 300	4,105.30	-3.43%
Sensex 30	16,147.03	-1.96%
Bovespa	53,134.10	-3.52%
DJ Euro Stoxx 50 Fu	2203	-5.45%
CAC Futures	3081	-5.29%
DAX Futures	5596.5	-6.04%
CBOE Put/Call	0.97	+16.87%
CBOE Buy/Write M	739.95	-4.45%
VIX	42.67	+35.12%
VSTOXX	47.1694	+34.60%

\*На 10:00 мск, по данным Bloomberg

Продажи домов на вторичном рынке жилья неожиданно понизились на 3.5%, абсолютный уровень продаж опустился до ноября 2010 года.



На азиатских рынках в пятницу также наблюдалось снижение котировок. Гонконгский HangSeng понизился на 2.98%, японский Nikkei – потерял 2.51%. Австралийский S&P/ASX 200 потерял 3.51%. Индексы шанхайской биржи в среднем потеряли 1.5%. KOSPI рухнул на 6.21%. Понижение прогнозов по глобальной экономики аналитиками крупнейших банков способствовало дальнейшему бегству инвесторов в безрисковые активы.

В Европе в начале дня наблюдается уверенное снижение котировок. Фьючерс на Индекс DAX потерял 1.24%, Dow Jones Eurostoxx 600 - понизился на 1.04%.

**Сегодня в Европе и США значимых статданных не ожидается.**

Прогноз	S&P 500	Изм
CONDISCRET	27251	-3.15%
CONSPAPLES	30659	+1.51%
ENERGY	47722	-3.05%
FINANCIALS	16618	-4.40%
HEALTHCARE	35896	-0.99%
INDUSTRIALS	25495	-4.04%
INOTECH	36782	-4.88%
MATERIALS	20856	-4.95%
TELECOMSERV	12061	+0.61%
UTILITIES	16446	+2.03%

Наиболее активные акции в США*		
NETAPP INC	35.81	16.79%
TERADATA CORP	45.42	16.78%
GOODYEAR TIRE	11.75	14.42%
JDS UNIPHASE	10.2	14.36%
SALESFORCE.COM	114.1	14.35%
PULTEGROUP INC	4.16	13.87%
COGNIZANT TECH-A	54.46	13.19%
JABIL CIRCUIT	14.27	13.09%
O'REILLY AUTOMOT	61.36	+1.15%
PHILIP MORRIS IN	68.5	+1.18%
PPL CORPORATION	27.29	+1.19%
REYNOLDS AMERICA	35.49	+1.46%
SCANA CORP	39.15	+1.50%
PG&E CORP	41.32	+1.77%
CONSOL ENERGY	42.59	+2.13%

## Ежедневный обзор

Календарь макроэкономической статистики*						
Date Time		Event		Survey	Actual	Prior
08/01/2011 08:00	EC	PMI Manufacturing	JUL F	50.4	--	50.4
08/15/2011 12:30	US	Empire Manufacturing	AUG	0	--	-3.76
08/15/2011 13:00	US	Net Long-term TIC Flows	JUN	\$32.6B	--	\$23.6B
08/15/2011 13:00	US	Total Net TIC Flows	JUN	--	--	-\$67.5B
08/15/2011 13:30	EC	ECB Announces Bond Purchases				
08/15/2011 14:00	US	NAHB Housing Market Index	AUG	15	--	15
08/16/2011 06:00	GE	GDP nsa (YoY)	2Q P	3.20%	--	5.20%
08/16/2011 06:00	GE	GDP s.a. (QOQ)	2Q P	0.50%	--	1.50%
08/16/2011 06:00	GE	GDP wda (YoY)	2Q P	3.10%	--	4.90%
08/16/2011 09:00	EC	Euro-Zone GDP s.a. (QoQ)	2Q A	0.30%	--	0.80%
08/16/2011 09:00	EC	Euro-Zone GDP s.a. (YoY)	2Q A	1.80%	--	2.50%
08/16/2011 09:00	EC	Euro-Zone Trade Balance sa	JUN	0.0B	--	-0.6B
08/16/2011 09:00	EC	Euro-Zone Trade Balance	JUN	1.1B	--	0.0B
08/16/2011 12:30	US	Import Price Index (MoM)	JUL	-0.10%	--	-0.50%
08/16/2011 12:30	US	Import Price Index (YoY)	JUL	13.40%	--	13.60%
08/16/2011 12:30	US	Housing Starts	JUL	600K	--	629K
08/16/2011 12:30	US	Housing Starts MOM%	JUL	-4.60%	--	--
08/16/2011 12:30	US	Building Permits	JUL	605K	--	624K
08/16/2011 12:30	US	Building Permits MOM%	JUL	-1.90%	--	2.50%
08/16/2011 13:15	US	Industrial Production	JUL	0.50%	--	0.20%
08/16/2011 13:15	US	Capacity Utilization	JUL	77.00%	--	76.70%
08/16/2011 15:00	US	U.S. Fed to Purchase USD2.5-3 Bln				
08/16/2011 20:30	US	API U.S. Crude Oil Inventories	12-Aug	--	--	-5213K
08/16/2011 20:30	US	API Cushing Crude OK Inventory	12-Aug	--	--	-1399K
08/16/2011 20:30	US	API U.S. Distillate Inventory	12-Aug	--	--	-558K
08/16/2011 20:30	US	API U.S. Gasoline Inventories	12-Aug	--	--	-1005K
08/17/2011 08:00	EC	Euro-Zone Current Account nsa	JUN	--	--	-18.3B
08/17/2011 08:00	EC	ECB Euro-Zone Current Account SA	JUN	--	--	-5.2B
08/17/2011 09:00	EC	Euro-Zone CPI - Core (YoY)	JUL	1.60%	--	1.60%
08/17/2011 09:00	EC	Euro-Zone CPI (MoM)	JUL	-0.60%	--	0.00%
08/17/2011 09:00	EC	Euro-Zone CPI (YoY)	JUL	2.50%	--	2.50%
08/17/2011 11:00	US	MBA Mortgage Applications	12-Aug	--	--	21.70%
08/17/2011 12:30	US	Producer Price Index (MoM)	JUL	0.10%	--	-0.40%
08/17/2011 12:30	US	PPI Ex Food & Energy (MoM)	JUL	0.20%	--	0.30%
08/17/2011 12:30	US	Producer Price Index (YoY)	JUL	7.00%	--	7.00%
08/17/2011 12:30	US	PPI Ex Food & Energy (YoY)	JUL	2.30%	--	2.40%
08/17/2011 14:30	US	DOE U.S. Crude Oil Inventories	12-Aug	--	--	-5225K
08/17/2011 14:30	US	DOE Cushing OK Crude Inventory	12-Aug	--	--	-1372K
08/17/2011 14:30	US	DOE U.S. Distillate Inventory	12-Aug	--	--	-737K

Eurostoxx 600		
SX3P	347.1	+0.45%
SX4P	480.32	-3.27%
SX6P	247.32	-1.39%
SX7P	137.76	-3.44%
SX86P	107.7	-2.59%
SX8P	167.66	-4.93%
SXAP	268.09	-5.36%
SXDP	375.89	+2.21%
SXEP	278.94	+0.77%
SXFP	211.42	-2.82%
SXIP	127.19	-0.85%
SXKP	237.77	+0.16%
SXMP	144.39	-0.93%
SXNP	257.31	-3.79%
SXOP	210.31	-4.69%
SXPP	441.25	-2.96%
SXQP	383.62	-1.05%
SXRP	226.39	+0.35%
SXTP	103.68	-1.24%
SXXP	226.7	-1.68%

Наиболее активные акции в Европе*		
AIXTRON SE	14.25	18.29%
PROSIE SAT.1-PFD	11.6	17.18%
THOMAS COOK GROU	44.16	15.48%
DEXIA SA	1.566	15.35%
BARCLAYS PLC	154	15.20%
COMMERZBANK RENEWABLE ENERGY	1.899	15.07%
ROYAL BK SCOTLAN	9.135	15.02%
UNILEVER NV-CVA	21.95	14.69%
SWEDISH MATCH AB	23.21	+0.69%
CASTELLUM AB	234.1	+1.04%
ASSOC BRIT FOODS	83.65	+1.21%
KERRY GROUP-A	1035	+1.27%
WIENERBERGER AG	26.99	+1.66%
MAPFRE SA	9.223	+1.98%
	2.37	+2.60%

## Ежедневный обзор

08/17/2011 14:30	US	DOE U.S. Gasoline Inventories	12-Aug	--	--	-1588K
08/17/2011 14:30	US	DOE U.S. Refinery Utilization	12-Aug	--	--	0.70%
08/17/2011 14:30	US	DOE Crude Oil Implied Demand	12-Aug	--	--	15375
08/17/2011 14:30	US	DOE Distillate Implied Demand	12-Aug	--	--	4724.3
08/17/2011 14:30	US	DOE Gasoline Implied Demand	12-Aug	--	9498.6	9498.6
08/17/2011 17:20	US	Fed's Fisher Speaks at Event in				
08/18/2011 09:00	EC	Construction Output SA MoM	JUN	--	--	-1.10%
08/18/2011 09:00	EC	Construction Output WDA YoY	JUN	--	--	-1.90%
08/18/2011 12:30	US	Continuing Claims	6-Aug	3700K	--	--
08/18/2011 12:30	US	Initial Jobless Claims	13-Aug	400K	--	--
08/18/2011 12:30	US	Consumer Price Index (MoM)	JUL	0.20%	--	-0.20%
08/18/2011 12:30	US	CPI Ex Food & Energy (MoM)	JUL	0.20%	--	0.30%
08/18/2011 12:30	US	Consumer Price Index (YoY)	JUL	3.30%	--	3.60%
08/18/2011 12:30	US	CPI Ex Food & Energy (YoY)	JUL	1.70%	--	1.60%
08/18/2011 12:30	US	CPI Core Index SA	JUL	--	--	224.958
08/18/2011 12:30	US	Consumer Price Index NSA	JUL	225.9	--	225.722
08/18/2011 12:35	US	Fed's Dudley to Speak in Newark,				
08/18/2011 13:45	US	Bloomberg Consumer Comfort	14-Aug	--	--	-49.1
08/18/2011 13:45	US	Bloomberg Economic Expectations	AUG	--	--	-22
08/18/2011 14:00	US	Philadelphia Fed.	AUG	3.5	--	3.2
08/18/2011 14:00	US	Leading Indicators	JUL	0.20%	--	0.30%
08/18/2011 14:00	US	Existing Home Sales	JUL	4.90M	--	4.77M
08/18/2011 14:00	US	Existing Home Sales MoM	JUL	2.70%	--	-0.80%
08/18/2011 14:30	US	EIA Natural Gas Storage Change	12-Aug	--	--	25
08/18/2011 17:00	US	U.S. to Sell USD12 Bln 5-Year TIPS				
08/18/2011 18:30	US	Fed's Dudley to Tour Jersey City,				
08/19/2011 06:00	GE	Producer Prices (MoM)	JUL	0.10%	--	0.10%
08/19/2011 06:00	GE	Producer Prices (YoY)	JUL	5.30%	--	5.60%
08/19/2011 12:30	US	Fed's Dudley to Speak in				
08/19/2011 14:45	US	Fed's Dudley to Tour Box				
08/19/2011 16:30	US	Former Gov. Gary Johnson, R-N.M.,				
08/19/2011 17:00	US	Baker Hughes U.S. Rig Count	19-Aug	--	--	1959
08/19/2011 17:45	US	Fed's Pinalto speaks on economy				
08/22/2011 12:30	US	Chicago Fed Nat Activity Index	JUL	--	--	-0.46
08/22/2011 13:30	EC	ECB Announces Bond Purchases				
08/22/2011 15:00	US	U.S. Fed to Purchase USD0.5-1 Bln				
08/22/2011 15:30	US	U.S. to Sell 3-Month Bills				
08/22/2011 15:30	US	U.S. to Sell 6-Month Bills				
08/23/2011 04:00	US	Greenspan Speaks at Washington				
08/23/2011 09:00	EC	ZEW Survey (Econ. Sentiment)	AUG	--	--	-7
08/23/2011 09:00	GE	Zew Survey (Current Situation)	AUG	--	--	90.6
08/23/2011 09:00	GE	ZEW Survey (Econ. Sentiment)	AUG	--	--	-15.1
08/23/2011 09:15	EC	ECB Announces Allotment in 7-Day				

## Ежедневный обзор

08/23/2011 11:00	EC	ECB Announces Allotment in 7-Day				
08/23/2011 14:00	EC	Euro-Zone Consumer Confidence	AUG A	--	--	-11.2
08/23/2011 14:00	US	Richmond Fed Manufact. Index	AUG	--	--	-1
08/23/2011 14:00	US	New Home Sales	JUL	315K	--	312K
08/23/2011 14:00	US	New Home Sales MoM	JUL	1.00%	--	-1.00%
08/23/2011 15:30	US	U.S. to Sell 4-Week Bills				
08/23/2011 15:30	US	U.S. to Sell 52-Week Bills				
08/23/2011 17:00	US	U.S. to Sell 2-Year Notes				
08/23/2011 20:30	US	API U.S. Crude Oil Inventories	19-Aug	--	--	--
08/23/2011 20:30	US	API Cushing Crude OK Inventory	19-Aug	--	--	--
08/23/2011 20:30	US	API U.S. Distillate Inventory	19-Aug	--	--	--
08/23/2011 20:30	US	API U.S. Gasoline Inventories	19-Aug	--	--	--
08/24/2011 08:00	GE	IFO - Business Climate	AUG	--	--	112.9
08/24/2011 08:00	GE	IFO - Current Assessment	AUG	--	--	121.4
08/24/2011 08:00	GE	IFO - Expectations	AUG	--	--	105
08/24/2011 09:00	EC	Industrial New Orders NSA (YoY)	JUN	--	--	15.50%
08/24/2011 09:00	EC	Industrial New Orders SA (MoM)	JUN	--	--	3.60%
08/24/2011 11:00	US	MBA Mortgage Applications	19-Aug	--	--	--
08/24/2011 12:30	US	Durable Goods Orders	JUL	2.00%	--	-2.10%
08/24/2011 12:30	US	Durables Ex Transportation	JUL	-0.30%	--	0.10%
08/24/2011 12:30	US	Cap Goods Orders Nondef Ex Air	JUL	--	--	-0.40%
08/24/2011 12:30	US	Cap Goods Ship Nondef Ex Air	JUL	--	--	1.00%
08/24/2011 14:00	US	House Price Purchase Index QoQ	2Q	--	--	-2.50%
08/24/2011 14:00	US	House Price Index MoM	JUN	--	--	0.40%
08/24/2011 14:30	US	DOE U.S. Crude Oil Inventories	19-Aug	--	--	--
08/24/2011 14:30	US	DOE Cushing OK Crude Inventory	19-Aug	--	--	--
08/24/2011 14:30	US	DOE U.S. Distillate Inventory	19-Aug	--	--	--
08/24/2011 14:30	US	DOE U.S. Gasoline Inventories	19-Aug	--	--	--
08/24/2011 14:30	US	DOE U.S. Refinery Utilization	19-Aug	--	--	--
08/24/2011 14:30	US	DOE Crude Oil Implied Demand	19-Aug	--	--	--
08/24/2011 14:30	US	DOE Distillate Implied Demand	19-Aug	--	--	--
08/24/2011 14:30	US	DOE Gasoline Implied Demand	19-Aug	--	--	9498.6
08/24/2011 17:00	US	U.S. to Sell 5-Year Notes				
08/25/2011 12:30	US	Continuing Claims	13-Aug	--	--	--
08/25/2011 12:30	US	Initial Jobless Claims	19-Aug	--	--	--
08/25/2011 13:45	US	Bloomberg Consumer Comfort	21-Aug	--	--	--
08/25/2011 14:30	US	EIA Natural Gas Storage Change	19-Aug	--	--	--
08/25/2011 15:00	US	U.S. Fed to Purchase USD0.25-0.50				
08/25/2011 17:00	US	U.S. to Sell 7-Year Notes				
08/26/2011 01:35	CH	MNI August Business Condition				
08/26/2011 06:00	GE	GfK Consumer Confidence Survey	SEP	--	--	5.4
08/26/2011 08:00	EC	Euro-Zone M3 s.a. 3 mth ave.	JUL	--	--	2.20%
08/26/2011 08:00	EC	Euro-Zone M3 s.a. (YoY)	JUL	--	--	2.10%

## Ежедневный обзор

08/26/2011 12:30	US	GDP QoQ (Annualized)	2Q S	1.30%	--	1.30%
08/26/2011 12:30	US	Personal Consumption	2Q S	--	--	0.10%
08/26/2011 12:30	US	GDP Price Index	2Q S	2.30%	--	2.30%
08/26/2011 12:30	US	Core PCE QoQ	2Q S	2.10%	--	2.10%
08/26/2011 13:55	US	U. of Michigan Confidence	AUG F	--	--	54.9
08/26/2011 14:00	US	Bernanke Gives Speech at Jackson				
08/26/2011 17:00	US	Baker Hughes U.S. Rig Count	26-Aug	--	--	--
08/27/2011 02:00	CH	Industrial Profits YTD YoY	JUL	--	--	28.70%
08/29/2011	GE	CPI - Baden Wuerttemberg (MoM)	AUG	--	--	0.50%
08/29/2011	GE	CPI - Baden Wuerttemberg (YoY)	AUG	--	--	2.70%
08/29/2011	GE	CPI - North Rhine-West. (MoM)	AUG	--	--	0.40%
08/29/2011	GE	CPI - North Rhine-West. (YoY)	AUG	--	--	2.70%
08/29/2011	GE	Consumer Price Index (MoM)	AUG P	--	--	0.40%
08/29/2011	GE	Consumer Price Index (YoY)	AUG P	--	--	2.40%
08/29/2011	GE	CPI - EU Harmonised (MoM)	AUG P	--	--	0.50%
08/29/2011	GE	CPI - EU Harmonised (YoY)	AUG P	--	--	2.60%
08/29/2011 07:00	GE	CPI - Saxony (MoM)	AUG	--	--	0.40%
08/29/2011 07:00	GE	CPI - Saxony (YoY)	AUG	--	--	2.50%
08/29/2011 08:00	GE	CPI - Brandenburg (MoM)	AUG	--	--	0.50%
08/29/2011 08:00	GE	CPI - Brandenburg (YoY)	AUG	--	--	2.20%
08/29/2011 08:00	GE	CPI - Hesse (MoM)	AUG	--	--	0.50%
08/29/2011 08:00	GE	CPI - Hesse (YoY)	AUG	--	--	2.20%
08/29/2011 10:00	GE	CPI - Bavaria (MoM)	AUG	--	--	0.50%
08/29/2011 10:00	GE	CPI - Bavaria (YoY)	AUG	--	--	2.30%
08/29/2011 12:30	US	Personal Income	JUL	--	--	0.10%
08/29/2011 12:30	US	Personal Spending	JUL	--	--	-0.20%
08/29/2011 12:30	US	PCE Deflator (YoY)	JUL	--	--	2.60%
08/29/2011 12:30	US	PCE Core (MoM)	JUL	--	--	0.10%
08/29/2011 12:30	US	PCE Core (YoY)	JUL	--	--	1.30%
08/29/2011 13:30	EC	ECB Calls for Bids in 7-Day Main				
08/29/2011 13:30	EC	ECB Announces Bond Purchases				
08/29/2011 14:00	US	Pending Home Sales MoM	JUL	--	--	2.40%
08/29/2011 14:00	US	Pending Home Sales YoY	JUL	--	--	17.30%
08/29/2011 14:30	US	Dallas Fed Manf. Activity	AUG	--	--	-2
08/29/2011 15:00	US	U.S. Fed to Purchase USD2.75-3.5				
08/29/2011 15:30	US	U.S. to Sell 3-Month Bills				
08/29/2011 15:30	US	U.S. to Sell 6-Month Bills				
08/25/2011 09/01	GE	Import Price Index (MoM)	JUL	--	--	-0.60%
08/25/2011 09/01	GE	Import Price Index (YoY)	JUL	--	--	6.50%
08/26/2011 09/02	GE	Retail Sales (MoM)	JUL	--	--	6.30%
08/26/2011 09/02	GE	Retail Sales (YoY)	JUL	--	--	-1.00%
15-16 AUG	CH	Actual FDI (YoY)	JUL	--	--	2.80%
22-25 AUG	CH	HSBC Flash China Manufacturing	AUG	--	--	48.9

## Ежедневный обзор

22-26 AUG	US	Mortgage Delinquencies	2Q	--	--	8.32%
22-26 AUG	US	MBA Mortgage Foreclosures	2Q	--	--	4.52%
24-28 AUG	EC	PMI Composite	AUG A	--	--	51.1
24-28 AUG	EC	PMI Manufacturing	AUG A	--	--	50.4
24-28 AUG	EC	PMI Services	AUG A	--	--	51.6
24-28 AUG	GE	PMI Manufacturing	AUG A	--	--	52
24-28 AUG	GE	PMI Services	AUG A	--	--	52.9
25-28 AUG	CH	Leading Index	JUL	--	--	101.76

Календарь отчетности, Европа*						
Компания	Тиккер	Дата	Время	Период	Факт	Консенсус
Michael Page International PLC	MPI LN	8/15/2011	6:00	S1 2011	0.1	0.113
Geberit AG	GEVN VX	8/16/2011	5:00	S1 2011		
Straumann Holding AG	STMN SW	8/16/2011	5:00	S1 2011		4.06
Schindler Holding AG	SCHP SW	8/16/2011	5:15	S1 2011		
Sydbank A/S	SYDB DC	8/16/2011		Q2 2011		2.355
United Internet AG	UTDI GR	8/16/2011		Q2 2011		0.21
PSP Swiss Property AG	PSPN SW	8/16/2011		S1 2011		
CRH PLC	CRH ID	8/16/2011		S1 2011		0.098
Swiss Life Holding AG	SLHN VX	8/17/2011	5:00	S1 2011		8.522
Carlsberg A/S	CARLB DC	8/17/2011	5:00	Q2 2011		16.819
Hochtief AG	HOT GR	8/17/2011	5:00	Q2 2011		0.063
Telekom Austria AG	TKA AV	8/17/2011	5:00	Q2 2011		0.13
Eurasian Natural Resources Corp PLC	ENRC LN	8/17/2011	6:00	S1 2011		1.02
Coloplast A/S	COLOB DC	8/17/2011	6:00	Q3 2011		10.223
Henderson Group PLC	HGG LN	8/17/2011	6:00	S1 2011		0.067
Balfour Beatty PLC	BBY LN	8/17/2011	6:00	S1 2011		0.146
Wienerberger AG	WIE AV	8/17/2011	6:00	Q2 2011		0.28
AP Moller - Maersk A/S	MAERSKB	8/17/2011	6:00	S1 2011		2394
Vestas Wind Systems A/S	VWS DC	8/17/2011	6:30	Q2 2011		0.2
Holmen AB	HOLMB SS	8/17/2011	10:00	Q2 2011		3.62
Tryg A/S	TRYG DC	8/17/2011	15:00	S1 2011		
Aalberts Industries NV	AALB NA	8/17/2011		S1 2011		0.6
Galenica AG	GALN SW	8/17/2011		S1 2011		16.445
PSP Swiss Property AG	PSPN SW	8/17/2011		Q2 2011		0.825
Holcim Ltd	HOLN VX	8/18/2011	5:00	Q2 2011		1.114
SBM Offshore NV	SBMO NA	8/18/2011	5:30	S1 2011		0.89
FLSmidth & Co A/S	FLS DC	8/18/2011	10:00	Q2 2011		6.366
Corio NV	CORA NA	8/18/2011	Aft-mkt	S1 2011		1.47
Voestalpine AG	VOE AV	8/18/2011		Q1 2012		1.053

## Ежедневный обзор

Vienna Insurance Group AG Wiener	VIG AV	8/18/2011		Q2 2011		0.85
NCC AB	NCCA SS	8/18/2011		Q2 2011		4.04
Koninklijke Boskalis Westminster NV	BOKA NA	8/18/2011		S1 2011		1.25
Kabel Deutschland Holding AG	KD8 GR	8/18/2011		Q1 2012		0.1
Ratos AB	RATOB SS	8/19/2011	6:30	Q2 2011		
William Demant Holding A/S	WDH DC	8/19/2011		S1 2011		10.144
Valiant Holding	VATN SW	8/19/2011		S1 2011		
Jyske Bank A/S	JYSK DC	8/22/2011		Q2 2011		5.15
Petrofac Ltd	PFC LN	8/22/2011		S1 2011		0.697
Amlin PLC	AML LN	8/22/2011		S1 2011		-0.246
Essar Energy PLC	ESSR LN	8/22/2011		S1 2011		0.11
GAM Holding AG	GAM SW	8/23/2011	5:00	S1 2011		
Topdanmark A/S	TOP DC	8/23/2011		Q2 2011		23.3
Lindt & Spruengli AG	LISN SW	8/23/2011		S1 2011		
Cairn Energy PLC	CNE LN	8/23/2011		S1 2011		0.235
Persimmon PLC	PSN LN	8/23/2011		S1 2011		0.14
John Wood Group PLC	WG/ LN	8/23/2011		S1 2011		0.2
Spectris PLC	SXS LN	8/23/2011		S1 2011		0.478
Segro PLC	SGRO LN	8/23/2011		S1 2011		0.089
G4S PLC	GFS LN	8/23/2011		S1 2011		0.107
Spirax-Sarco Engineering PLC	SPX LN	8/23/2011		S1 2011		
Ageas	AGS BB	8/24/2011	Bef-mkt	S1 2011		0.07
Admiral Group PLC	ADM LN	8/24/2011	7:00	S1 2011		0.432
JM AB	JM SS	8/24/2011		Q2 2011		2.8
Accor SA	AC FP	8/24/2011		S1 2011		0.42
Heineken NV	HEIA NA	8/24/2011		S1 2011		1.274
Heineken Holding NV	HEIO NA	8/24/2011		S1 2011		
Koninklijke Vopak NV	VPK NA	8/24/2011		S1 2011		
Tullow Oil PLC	TLW LN	8/24/2011		S1 2011		0.307
WPP PLC	WPP LN	8/24/2011		S1 2011		0.225
BHP Billiton PLC	BLT LN	8/24/2011		Y 2011		4.188
Carillion PLC	CLLN LN	8/24/2011		S1 2011		0.134
Derwent London PLC	DLN LN	8/24/2011		S1 2011		0.272
Serco Group PLC	SRP LN	8/24/2011		S1 2011		0.175
Gemalto NV	GTO FP	8/25/2011	Bef-mkt	S1 2011		0.59
Bureau Veritas SA	BVI FP	8/25/2011	Bef-mkt	S1 2011		1.52
Seadrill Ltd	SDRL NO	8/25/2011	Bef-mkt	Q2 2011		0.683
Credit Agricole SA	ACA FP	8/25/2011	5:00	S1 2011		
Raiffeisen Bank International AG	RBI AV	8/25/2011	5:30	Q2 2011		1.19
Kazakhmys PLC	KAZ LN	8/25/2011	6:00	S1 2011		1.73

## Ежедневный обзор

OPAP SA	OPAP GA	8/25/2011		Q2 2011		0.39
Ackermans & van Haaren NV	ACKB BB	8/25/2011		S1 2011		2.49
Banca Popolare di Milano Scarl	PMI IM	8/25/2011		S1 2011		
Koninklijke Ahold NV	AH NA	8/25/2011		S1 2011		
Banca Popolare di Sondrio SCARL	BPSO IM	8/25/2011		S1 2011		
Edenred	EDEN FP	8/25/2011		S1 2011		
Premier Oil PLC	PMO LN	8/25/2011		S1 2011		0.07
AMEC PLC	AMEC LN	8/25/2011		S1 2011		0.294
Petropavlovsk PLC	POG LN	8/25/2011		S1 2011		0.65
IMI PLC	IMI LN	8/25/2011		S1 2011		0.36
Diageo PLC	DGE LN	8/25/2011		Y 2011		0.79
Aegis Group PLC	AGS LN	8/25/2011		S1 2011		0.032
Kenmare Resources PLC	KMR ID	8/25/2011		S1 2011		0.007
Hikma Pharmaceuticals PLC	HIK LN	8/25/2011		S1 2011		0.2
Aggreko PLC	AGK LN	8/25/2011		S1 2011		
Public Power Corp SA	PPC GA	8/26/2011		Q2 2011		
Eurocommercial Properties NV	ECMPA NA	8/26/2011		Y 2011		1.874
Banca Popolare dell'Emilia Romagna Scrl	BPE IM	8/26/2011		S1 2011		
Prysmian SpA	PRY IM	8/26/2011		S1 2011		
Banco Popolare SC	BP IM	8/26/2011		S1 2011		
Banca Monte dei Paschi di Siena SpA	BMPS IM	8/26/2011		S1 2011		
Cie Generale d'Optique Essilor	EI FP	8/26/2011		S1 2011		1.26
Sofina SA	SOF BB	8/26/2011		S1 2011		
EFG Eurobank Ergasias SA	EUROB GA	8/29/2011	Aft-mkt	Q2 2011		-0.07
Unione di Banche Italiane SCPA	UBI IM	8/29/2011		S1 2011		
Exor SpA	EXO IM	8/29/2011		S1 2011		

## Календарь отчетности, США\*

Компания	Тиккер	Дата	Время	Консенсус		
Sysco Corp	SYU US	8/15/2011	Bef-mkt	Q4 2011		0.574
Lowe's Cos Inc	LOW US	8/15/2011	10:00	Q2 2012		0.66
Estee Lauder Cos Inc/The	EL US	8/15/2011	11:30	Q4 2011		0.249
Urban Outfitters Inc	URBN US	8/15/2011	20:00	Q2 2012		0.323
Agilent Technologies Inc	A US	8/15/2011	20:05	Q3 2011		0.728
Wal-Mart Stores Inc	WMT US	8/16/2011	11:00	Q2 2012		1.081
TJX Cos Inc	TJX US	8/16/2011	13:30	Q2 2012		0.887
Analog Devices Inc	ADI US	8/16/2011	20:00	Q3 2011		0.732
Dell Inc	DELL US	8/16/2011		Q2 2012		0.493
Home Depot Inc	HD US	8/16/2011		Q2 2012		0.824

## Ежедневный обзор

Target Corp	TGT US	8/17/2011	Bef-mkt	Q2 2012		0.967
Abercrombie & Fitch Co	ANF US	8/17/2011	11:00	Q2 2012		0.294
NetApp Inc	NTAP US	8/17/2011	Aft-mkt	Q1 2012		0.555
Ltd Brands Inc	LTD US	8/17/2011	Aft-mkt	Q2 2012		0.459
JDS Uniphase Corp	JDSU US	8/17/2011	Aft-mkt	Q4 2011		0.225
Staples Inc	SPLS US	8/17/2011		Q2 2012		0.194
Deere & Co	DE US	8/17/2011		Q3 2011		1.67
Sears Holdings Corp	SHLD US	8/18/2011	Bef-mkt	Q2 2012		-0.46
Ross Stores Inc	ROST US	8/18/2011	12:30	Q2 2012		1.269
Gap Inc/The	GPS US	8/18/2011	20:00	Q2 2012		0.332
Intuit Inc	INTU US	8/18/2011	Aft-mkt	Q4 2011		0.001
Hewlett-Packard Co	HPQ US	8/18/2011	Aft-mkt	Q3 2011		1.093
Salesforce.com Inc	CRM US	8/18/2011	Aft-mkt	Q2 2012		0.294
JM Smucker Co/The	SJM US	8/18/2011		Q1 2012		1.095
Autodesk Inc	ADSK US	8/18/2011		Q2 2012		0.407
GameStop Corp	GME US	8/18/2011		Q2 2012		0.215
Medtronic Inc	MDT US	8/23/2011	11:15	Q1 2012		0.794
HJ Heinz Co	HNZ US	8/23/2011		Q1 2012		0.754
Applied Materials Inc	AMAT US	8/24/2011		Q3 2011		0.334
Patterson Cos Inc	PDCO US	8/25/2011	Bef-mkt	Q1 2012		0.438
Hormel Foods Corp	HRL US	8/25/2011	Bef-mkt	Q3 2011		0.35
Big Lots Inc	BIG US	8/25/2011		Q2 2012		0.444
Tiffany & Co	TIF US	8/26/2011		Q2 2012		0.696

**Заявление об ограничении ответственности:** Настоящие обзоры подготовлены в информационных целях. Они ни в коем случае не являются и не должны рассматриваться как предложение купить или продать соответствующие ценные бумаги. Информация, содержащаяся в данных обзорах, получена из вызывающих доверия открытых источников. Несмотря на то, что при подготовке обзоров были предприняты необходимые меры для получения достоверной информации, ИК РУСС-ИНВЕСТ не исключает возможность включения в обзор ошибочной информации, предоставленной соответствующими источниками, и не несет за это ответственности. ИК РУСС-ИНВЕСТ, его работники и клиенты могут быть заинтересованы в покупке или продаже ценных бумаг, упомянутых в обзорах.

[www.russ-invest.com](http://www.russ-invest.com)**Москва**

Тел: +7(495) 363-93-80  
Факс: +7(495) 363-93-90  
E-mail: [mail@russ-invest.com](mailto:mail@russ-invest.com)  
Адрес: Москва, 119019, 5-3/12  
Нащокинский переулок

**Санкт-Петербург**

Тел: +7(812) 337-55-37  
Факс: +7(812) 337-55-37  
E-mail: [spb@russ-invest.com](mailto:spb@russ-invest.com)  
Адрес: 190002, СПб, Набережная р.  
Фонтанки, 52

**Самара**

Телефон: +7 (846) 262-75-52  
Факс: +7 (846) 262-75-52  
E-mail: [sam@russ-invest.com](mailto:sam@russ-invest.com)  
Адрес: 443067, Самара, ул. Гагарина,  
дом 95

© 2007 | ОАО «ИК РУСС-ИНВЕСТ»

Лицензия ФСФР №077-08757-000100 и №077-08755-001000

Лицензия ФСФР №177-06310-100000 и №177-06312-010000

Лицензия ФСФР №906