

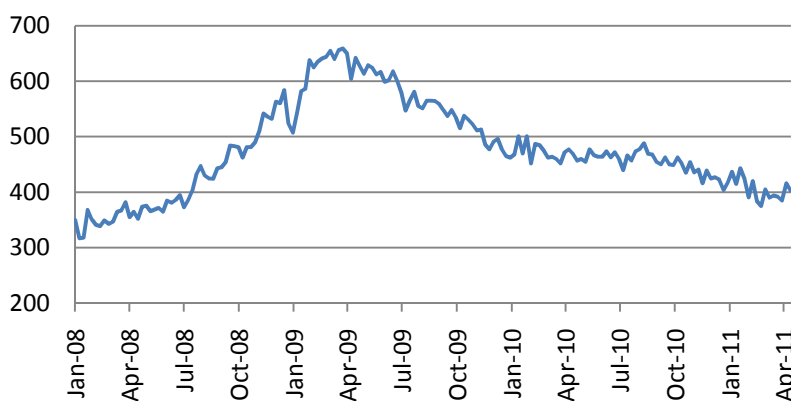
Ежедневный обзор мирового рынка акций

22 апреля 2011 г.

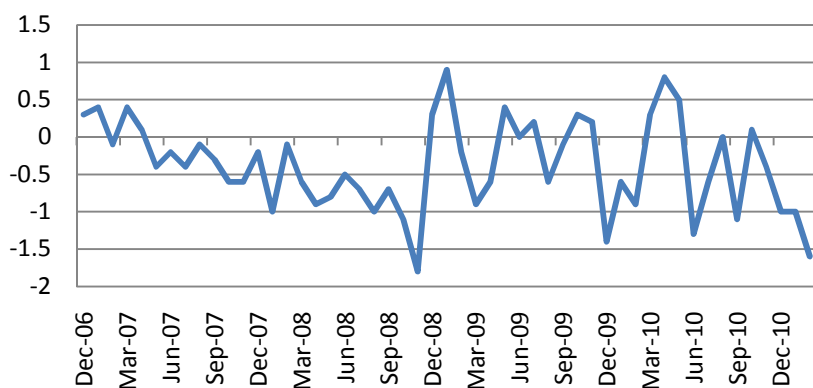
На фондовых биржах США в четверг преобладал рост котировок. В лидерах были акции горнодобывающего (+1.32%) и высокотехнологичного сектора (+1.0%). Индекс акций малой капитализации Russell 2000 прибавил 0.74%.

Данные в целом носили неблагоприятный характер – количество первоначальных заявок на пособие по безработице за неделю выросло до 403 тыс. (прогноз – 390 тыс.)

Количество первоначальных заявок на пособие по безработице, тыс.



Индекс цен на недвижимость от FHFA в феврале снизился на 1.6% м/м (прогноз – -0.3%), а январский показатель был пересмотрен в сторону снижения до -1.0% с -0.3%. Последний раз столь резкое снижение наблюдалось в октябре 2008 года. В годовом выражении падение составило 5.8%.

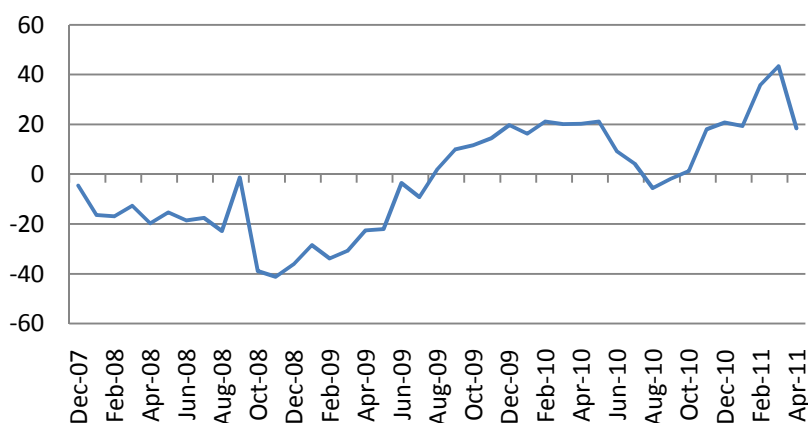


Основные индикаторы рынка		
CDS HY 5Y	440.67	+0.76%
ITX Crossover Euro	268.88	+0.89%
CDS Japan 5Y	79.89	-3.48%
CDS EM 5Y	113.89	+0.04%
CDS Russia 5Y	130.29	-0.85%
US Tsys 10Y	3.60%	+0.07%
US Tsys 5Y	2.28%	+0.01%
Brazil 10Y	4.29%	-0.04%
Germany 10Y	3.12%	+0.32%
EUR/USD	1.4584	+0.09%
USD/JPY	81.87	-0.13%
EUR/GBP	0.8833	-0.30%
Oil Brent	123.99	+0.11%
Gold	1503.8	+0.33%
Copper	9705	+1.30%
Nickel	26880	+1.90%
S&P 500	1331	+0.21%
Russell 2000	845.64	+0.74%
Bovespa	67058.02	+1.36%
Topix	843.5	+0.36%
Shanghai Comp	3,008.67	-0.59%
S&P/ASX 300	4,913.80	+1.13%
Sensex 30	19,602.23	+0.67%
Bovespa	67,058.02	+1.36%
DJ Euro Stoxx 50 Fu	2869	+0.84%
CAC Futures	3954	+0.56%
DAX Futures	7313	+0.76%
CBOE Put/Call	0.63	+21.15%
CBOE Buy/Write M	835.65	+0.28%
VIX	14.69	-2.52%
VSTOXX	18.9266	-0.83%

*На 10:00 мск, по данным Bloomberg

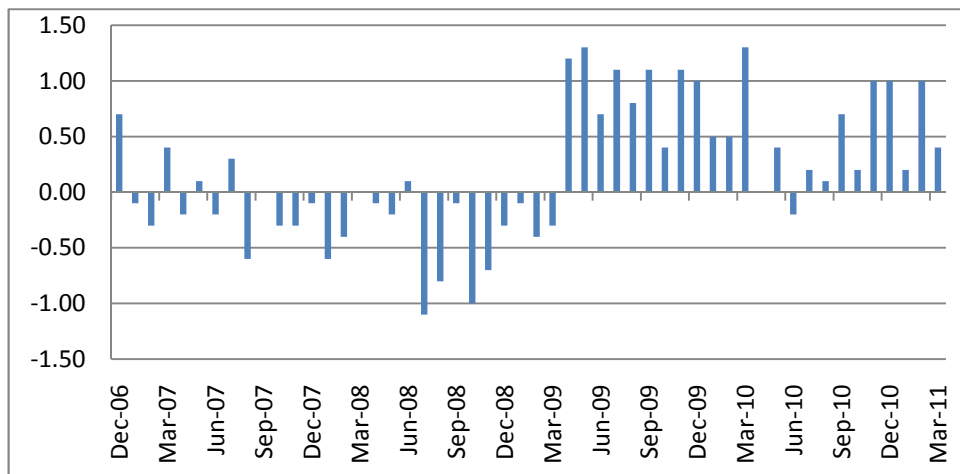
Ежедневный обзор

Индекс производственной активности ФРБ Филадельфии неожиданно снизился до 18.5 в апреле от 28-летнего максимума 43.4, который был достигнут в марте.



Благоприятная отчетность Apple, Morgan Stanley, Mcdonalds' способствовала росту котировок данных акций.

Индекс опережающих макроэкономических индикаторов в марте вырос на 0.4%, выше прогноза 0.3%.



Доллар США отыгрывал утраченные накануне позиции к мировым валютам.

В ходе торгов в Азии наблюдалась смешанная динамика котировок. Японские индексы по итогам торгов потеряли в пределах 0.1%, корейский KOSPI - 0.03%. Индексы шанхайской биржи понизились в пределах 0.6%. Торги в Гонконге и Австралии были закрыты.

Ежедневный обзор

Сегодня на основных западных рынках торги проводиться не будут в связи с приближающимся праздником Пасхи.

Сезон отчетности в США

Сектор	Опубл.	Всего	Усредн.рост	Сравн. с	Лучше	Хуже
Всего	121	499	18.64%	9.77%	99	19
Нефть и Газ	5	38	6.68%	1.12%	3	2
Горнодобыча	8	26	47.02%	13.01%	8	0
Промышленность	19	72	44.09%	9.37%	17	2
Потр.товары	8	54	10.95%	0.82%	5	2
Здравохранение	18	46	4.72%	7.93%	17	1
Потр.услуги	9	74	12.72%	6.53%	5	4
Телеком	2	9	-5.04%	0.47%	1	0
ЖКХ	1	34	8.38%	2.76%	1	0
Финансовые	36	85	14.16%	14.05%	31	5
Технологии	15	61	34.09%	10.63%	11	3

Сезон отчетности в Европе

Сектор	Опубл.	Всего	Усредн.рост	Сравн. с	Лучше	Хуже
Всего	36	326	-4.81%	7.30%	23	8
Нефть и Газ	1	22	17.20%	-0.82%	0	1
Горнодобыча	4	32	162.33%	7.69%	2	2
Промышленность	8	61	42.57%	2.51%	6	2
Потр.товары	5	32	4.75%	0.26%	2	1
Здравохранение	3	23	9.84%	5.74%	3	0
Потр.услуги	1	28	52.67%	0.74%	1	0
Телеком	4	16	12.28%	10.94%	3	1
ЖКХ	2	18	2.00%	0.31%	1	0
Финансовые	4	78	-91.79%	73.61%	2	0
Технологии	4	16	37.96%	20.99%	3	1

Наиболее активные акции в США*

PULTEGROUP INC	7.78	-5.58%
WELLS FARGO & CO	28.54	-5.09%
FOREST LABS INC	32.55	-4.38%
FIRST HORIZON NA	10.35	-4.26%
STRYKER CORP	58.51	-4.24%
GILEAD SCIENCES	39.06	-3.91%
QUEST DIAGNOSTIC	56.55	-3.83%
TYCO INTL LTD	49.12	-3.76%
INTEL CORP	21.46	+8.11%
UNITEDHEALTH GRP	47.81	+8.76%
MICRON TECH	11.53	+9.60%
SLM CORP	16.31	+10.73%
JDS UNIPHASE	20	+10.86%
F5 NETWORKS	106.87	+15.01%
BIOGEN IDEC INC	99.7	+18.70%

Подиндекс	Изм.	
	S&P 500	Изм.
CONSDISCRE	315.41	+2.29%
CONSTAPLE	318.84	+0.57%
ENERGY	586.74	+3.32%
FINANCIALS	216.86	-0.13%
HEALTHCARE	396.13	+1.92%
INDUSTRIALS	325.49	+1.60%
INFOTECH	423.32	+2.57%
MATERIALS	251.89	+3.47%
TELECOMSERV	131.38	-0.08%
UTILITIES	163.74	+1.54%

Ежедневный обзор

Календарь макроэкономической статистики*						
Время, GMT	Страна	Данные	Период	Прогноз	Значение	Прошл.
04/18/2011 02:00	CH	China March Property Prices				
04/18/2011 09:00	EC	Bank Of Greece holds General Shareholders				
04/18/2011 10:00	EC	Bundesbank Releases Monthly Report				
04/18/2011 13:30	EC	ECB Calls for Bids in 7-Day Main Refinancing				
04/18/2011 14:00	EC	Euro-Zone Consumer Confidence	APR A	-11	--	-10.6
04/18/2011 14:00	US	Fed's Fisher, Lockhart to Discuss				
04/18/2011 14:00	US	NAHB Housing Market Index	APR	17	--	17
04/18/2011 15:00	US	U.S. Fed to Purchase USD1.5-2.5 Bln				
04/18/2011 15:30	US	U.S. to Sell USD30 Bln 3-Month Bills				
04/18/2011 15:30	US	U.S. to Sell USD28 Bln 6-Month Bills				
04/18/2011 16:00	US	Fed's Bullard to Speak on Banking Rules in				
04/18/2011 16:30	US	Fed's Fisher to Speak on U.S. Economic				
18-22 APR	CH	Actual FDI (YoY)	MAR	--	--	32.20%
04/19/2011 02:30	CH	HSBC Flash China Manufacturing	APR	--	--	51.8
04/19/2011 05:00	JN	Consumer Confidence	MAR	--	--	--
04/19/2011 06:00	JN	Machine Tool Orders (YoY)	MAR F	--	--	49.50%
04/19/2011 06:00	EC	EU 25 New Car Registrations	MAR	--	--	0.90%
04/19/2011 07:30	GE	PMI Manufacturing	APR A	60	--	60.9
04/19/2011 07:30	GE	PMI Services	APR A	59.8	--	60.1
04/19/2011 08:00	EC	PMI Composite	APR A	57	--	57.6
04/19/2011 08:00	EC	Euro-Zone Current Account nsa	FEB	--	--	-19.6B
04/19/2011 08:00	EC	ECB Euro-Zone Current Account SA	FEB	--	--	-0.7B
04/19/2011 08:00	EC	PMI Manufacturing	APR A	57	--	57.5
04/19/2011 08:00	EC	PMI Services	APR A	56.9	--	57.2
04/19/2011 09:00	EC	Construction Output SA MoM	FEB	--	--	1.80%
04/19/2011 09:00	EC	Construction Output WDA YoY	FEB	--	--	-4.50%
04/19/2011 09:15	EC	ECB Announces Allotment in 7-Day Main				
04/19/2011 12:30	US	Building Permits MOM%	MAR	1.10%	--	-8.20%
04/19/2011 12:30	US	Housing Starts MOM%	MAR	8.60%	--	-22.50%
04/19/2011 12:30	US	Building Permits	MAR	540K	--	517K
04/19/2011 12:30	US	Housing Starts	MAR	520K	--	479K
04/19/2011 15:00	US	U.S. Fed to Purchase USD5-7 Bln				
04/19/2011 15:30	US	U.S. to Sell 4-Week Bills				
04/19/2011 20:30	US	API U.S. Crude Oil Inventories	15-Apr	--	--	1187K
04/19/2011 20:30	US	API Cushing Crude OK Inventory	15-Apr	--	--	-107K
04/19/2011 20:30	US	API U.S. Distillate Inventory	15-Apr	--	--	-3686K
04/19/2011 20:30	US	API U.S. Gasoline Inventories	15-Apr	--	--	-4598K
04/19/2011 23:50	JN	Tertiary Industry Index (MoM)	FEB	0.10%	--	2.10%
04/19/2011 23:50	JN	Merchnds Trade Balance Total	MAR	¥645.4B	--	¥654.1B
04/19/2011 23:50	JN	Adjusted Merchnds Trade Bal.	MAR	¥327.5B	--	¥556.0B
04/19/2011 23:50	JN	Merchnds Trade Exports YoY	MAR	-1.1	--	9

Ежедневный обзор

04/19/2011 23:50	JN	Merchnds Trade Imports YoY	MAR	5.9	--	9.9
04/20/2011 02:00	CH	Conference Board China February Leading				
04/20/2011 06:00	GE	Producer Prices (MoM)	MAR	0.80%	--	0.70%
04/20/2011 06:00	GE	Producer Prices (YoY)	MAR	6.60%	--	6.40%
04/20/2011 08:30	UK	Bank of England Minutes				
04/20/2011 11:00	US	MBA Mortgage Applications	15-Apr	--	--	-6.70%
04/20/2011 14:00	US	Existing Home Sales MoM	MAR	2.50%	--	-9.60%
04/20/2011 14:00	US	Existing Home Sales	MAR	5.00M	--	4.88M
04/20/2011 14:30	US	DOE U.S. Crude Oil Inventories	15-Apr	--	--	1627K
04/20/2011 14:30	US	DOE Cushing OK Crude Inventory	15-Apr	--	--	26K
04/20/2011 14:30	US	DOE U.S. Distillate Inventory	15-Apr	--	--	-2681K
04/20/2011 14:30	US	DOE U.S. Gasoline Inventories	15-Apr	--	--	-7000K
04/20/2011 14:30	US	DOE U.S. Refinery Utilization	15-Apr	--	--	-3.00%
04/20/2011 14:30	US	DOE Crude Oil Implied Demand	15-Apr	--	--	13974
04/20/2011 14:30	US	DOE Distillate Implied Demand	15-Apr	--	--	4538
04/20/2011 14:30	US	DOE Gasoline Implied Demand	15-Apr	--	--	9463.4
04/20/2011 15:00	US	U.S. Fed to Purchase USD1-2 Bln TIPS				
04/20/2011 23:50	JN	Japan Buying Foreign Bonds	15-Apr	--	--	¥176.5B
04/20/2011 23:50	JN	Japan Buying Foreign Stocks	15-Apr	--	--	-¥161.0B
04/20/2011 23:50	JN	Foreign Buying Japan Bonds	15-Apr	--	--	-¥445.4B
04/20/2011 23:50	JN	Foreign Buying Japan Stocks	15-Apr	--	--	¥389.5B
20-22 APR	JN	Supermarket Sales (YoY)	MAR	--	--	0.60%
04/21/2011 05:00	JN	Coincident Index CI	FEB F	--	--	106.3
04/21/2011 05:00	JN	Leading Index CI	FEB F	--	--	104.2
04/21/2011 08:00	GE	IFO - Business Climate	APR	110.5	--	111.1
04/21/2011 08:00	GE	IFO - Current Assessment	APR	115.5	--	115.8
04/21/2011 08:00	GE	IFO - Expectations	APR	105.5	--	106.5
04/21/2011 08:30	UK	Public Finances (PSNCR)	MAR	14.0B	--	7.0B
04/21/2011 08:30	UK	PSNB ex Interventions	MAR	20.0B	--	11.8B
04/21/2011 08:30	UK	Public Sector Net Borrowing	MAR	18.7B	--	10.3B
04/21/2011 08:30	UK	Retail Sales Ex Auto Fuel(MoM)	MAR	-0.40%	--	-1.00%
04/21/2011 08:30	UK	Retail Sales Ex Auto Fuel(YoY)	MAR	0.80%	--	1.20%
04/21/2011 08:30	UK	Retail Sales w/Auto Fuel (MoM)	MAR	-0.50%	--	-0.80%
04/21/2011 08:30	UK	Retail Sales w/Auto Fuel (YoY)	MAR	1.00%	--	1.30%
04/21/2011 12:30	US	Initial Jobless Claims	16-Apr	393K	--	412K
04/21/2011 12:30	US	Continuing Claims	9-Apr	3678K	--	3680K
04/21/2011 13:30	EC	ECB Calls for Bids in 7-Day Main Refinancing				
04/21/2011 13:45	US	Bloomberg Economic Expectations	APR	--	--	-8
04/21/2011 13:45	US	Bloomberg Consumer Comfort	17-Apr	--	--	-43
04/21/2011 14:00	US	House Price Index MoM	FEB	-0.20%	--	-0.30%
04/21/2011 14:00	US	Leading Indicators	MAR	0.30%	--	0.80%
04/21/2011 14:00	US	Philadelphia Fed.	APR	36	--	43.4
04/21/2011 14:30	US	EIA Natural Gas Storage Change	15-Apr	--	--	28

Ежедневный обзор

04/21/2011 15:30	US	U.S. to Sell USD14 Bln 5-Year TIPS				
04/21/2011 17:00	US	Baker Hughes U.S. Rig Count	21-Apr	--	--	1772
04/21/2011 20:00	US	RPX Composite 28dy YoY	FEB	--	--	-3.39%
04/21/2011 20:00	US	RPX Composite 28dy Index	28-Feb	--	--	179.5
21-28 APR	JN	Convenience Store Sales YoY	MAR	--	--	--
04/24/2011 23:50	JN	Corp Service Price Index (YoY)	MAR	--	--	-1.00%
04/25/2011 14:00	US	New Home Sales MoM	MAR	10.00%	--	-16.90%
04/25/2011 14:00	US	New Home Sales	MAR	275K	--	250K
04/25/2011 14:30	US	Dallas Fed Manf. Activity	APR	--	--	11.5
04/25/2011 15:00	US	U.S. Fed to Purchase USD6-8 Bln				
04/25/2011 15:30	US	U.S. to Sell 3-Month Bills				
04/25/2011 15:30	US	U.S. to Sell 6-Month Bills				
25-28 APR	CH	Leading Index	MAR	--	--	101.05
04/26/2011 09:00	EC	Euro-Zone Govt Debt/GDP Ratio	2010	--	--	79.20%
04/26/2011 09:15	EC	ECB Announces Allotment in 7-Day Main				
04/26/2011 10:00	UK	CBI Business Optimism	APR	--	--	7
04/26/2011 10:00	UK	CBI Trends Total Orders	APR	--	--	5
04/26/2011 10:00	UK	CBI Trends Selling Prices	APR	--	--	33
04/26/2011 12:00	EC	ECB's Gonzalez-Paramo Speaks in Cordoba,				
04/26/2011 13:00	US	S&P/CaseShiller Home Price Ind	FEB	--	--	140.86
04/26/2011 13:00	US	S&P/CS 20 City MoM% SA	FEB	--	--	-0.22%
04/26/2011 13:00	US	S&P/CS Composite-20 YoY	FEB	--	--	-3.06%
04/26/2011 13:30	EC	ECB Calls for Bids in 3-Month Tender				
04/26/2011 14:00	US	Consumer Confidence	APR	64	--	63.4
04/26/2011 14:00	US	Richmond Fed Manufact. Index	APR	--	--	20
04/26/2011 15:00	US	U.S. Fed to Purchase USD1.5-2.5 Bln				
04/26/2011 15:30	US	U.S. to Sell 4-Week Bills				
04/26/2011 17:00	US	U.S. to Sell 2-Year Notes				
04/26/2011 20:30	US	API U.S. Crude Oil Inventories	22-Apr	--	--	1187K
04/26/2011 20:30	US	API Cushing Crude OK Inventory	22-Apr	--	--	--
04/26/2011 20:30	US	API U.S. Distillate Inventory	22-Apr	--	--	-3686K
04/26/2011 20:30	US	API U.S. Gasoline Inventories	22-Apr	--	--	-4598K
04/26/2011 23:50	JN	Retail Trade YoY	MAR	--	--	0.10%
04/26/2011 23:50	JN	Retail Trade MoM SA	MAR	--	--	0.80%
04/26/2011 23:50	JN	Large Retailers' Sales	MAR	--	--	0.50%
26-29 APR	UK	Nat'wide House prices sa (MoM)	APR	--	--	0.50%
26-29 APR	UK	Nat'wide House prices nsa(YoY)	APR	--	--	0.10%
04/27/2011 01:00	JN	Small Business Confidence	APR	--	--	49.5
04/27/2011 02:00	CH	Industrial Profits YTD YoY	MAR	--	--	34.30%
04/27/2011 06:00	GE	GfK Consumer Confidence Survey	MAY	--	--	5.9
04/27/2011 08:00	EC	ECB Publishes its Bank Lending Survey				
04/27/2011 08:30	UK	GDP (QoQ)	1Q A	--	--	-0.50%
04/27/2011 08:30	UK	GDP (YoY)	1Q A	--	--	1.50%

Ежедневный обзор

04/27/2011 08:30	UK	Index of Services (3mth/3mth)	FEB	--	--	-0.50%
04/27/2011 08:30	UK	Index of Services (MoM)	FEB	--	--	1.30%
04/27/2011 08:30	UK	BBA Loans for House Purchase	MAR	--	--	29923
04/27/2011 09:00	EC	Industrial New Orders NSA (YoY)	FEB	--	--	20.90%
04/27/2011 09:00	EC	Industrial New Orders SA (MoM)	FEB	--	--	0.10%
04/27/2011 09:15	EC	ECB Announces Allotment in 3-Month				
04/27/2011 11:00	US	MBA Mortgage Applications	22-Apr	--	--	--
04/27/2011 12:30	US	Cap Goods Orders Nondef Ex Air	MAR	--	--	-1.30%
04/27/2011 12:30	US	Cap Goods Ship Nondef Ex Air	MAR	--	--	0.80%
04/27/2011 12:30	US	Durable Goods Orders	MAR	2.00%	--	-0.90%
04/27/2011 12:30	US	Durables Ex Transportation	MAR	2.10%	--	-0.60%
04/27/2011 14:30	US	DOE U.S. Crude Oil Inventories	22-Apr	--	--	--
04/27/2011 14:30	US	DOE Cushing OK Crude Inventory	22-Apr	--	--	--
04/27/2011 14:30	US	DOE U.S. Distillate Inventory	22-Apr	--	--	--
04/27/2011 14:30	US	DOE U.S. Gasoline Inventories	22-Apr	--	--	-7000K
04/27/2011 14:30	US	DOE U.S. Refinery Utilization	22-Apr	--	--	--
04/27/2011 14:30	US	DOE Crude Oil Implied Demand	22-Apr	--	--	--
04/27/2011 14:30	US	DOE Distillate Implied Demand	22-Apr	--	--	--
04/27/2011 14:30	US	DOE Gasoline Implied Demand	22-Apr	--	--	--
04/27/2011 16:30	US	FOMC Rate Decision	27-Apr	--	--	0.25%
04/27/2011 17:00	US	U.S. to Sell 5-Year Notes				
04/27/2011 18:15	US	Bernanke Speaks at Fed Press Conference				
04/27/2011 23:01	UK	GfK Consumer Confidence Survey	APR	--	--	-28
04/27/2011 23:30	JN	Job-To-Applicant Ratio	MAR	--	--	0.62
04/27/2011 23:30	JN	Overall Hhhold Spending (YoY)	MAR	--	--	-0.20%
04/27/2011 23:30	JN	Jobless Rate	MAR	--	--	4.60%
04/27/2011 23:30	JN	Tokyo CPI YoY	APR	--	--	-0.30%
04/27/2011 23:30	JN	Tokyo CPI Ex-Fresh Food YoY	APR	--	--	-0.30%
04/27/2011 23:30	JN	Tokyo CPI Ex Food, Energy YoY	APR	--	--	-0.30%
04/27/2011 23:30	JN	Natl CPI YoY	MAR	--	--	0.00%
04/27/2011 23:30	JN	Natl CPI Ex-Fresh Food YoY	MAR	--	--	-0.30%
04/27/2011 23:30	JN	Natl CPI Ex Food, Energy YoY	MAR	--	--	-0.60%
04/27/2011 23:50	JN	Industrial Production (MoM)	MAR P	--	--	1.80%
04/27/2011 23:50	JN	Industrial Production YOY%	MAR P	--	--	2.90%
04/27/2011 23:50	JN	Japan Buying Foreign Bonds	22-Apr	--	--	--
04/27/2011 23:50	JN	Japan Buying Foreign Stocks	22-Apr	--	--	--
04/27/2011 23:50	JN	Foreign Buying Japan Bonds	22-Apr	--	--	--
04/27/2011 23:50	JN	Foreign Buying Japan Stocks	22-Apr	--	--	--
04/27/2011	GE	Consumer Price Index (MoM)	APR P	--	--	0.50%
04/27/2011	GE	Consumer Price Index (YoY)	APR P	--	--	2.10%
04/28/2011 04:00	JN	Vehicle Production (YoY)	MAR	--	--	-5.50%
04/28/2011 05:00	JN	Housing Starts (YoY)	MAR	--	--	10.10%
04/28/2011 05:00	JN	Annualized Housing Starts	MAR	--	--	0.872M

Ежедневный обзор

04/28/2011 05:00	JN	Construction Orders (YoY)	MAR	--	--	19.50%
04/28/2011 07:55	GE	Unemployment Change (000's)	APR	--	--	-55K
04/28/2011 07:55	GE	Unemployment Rate (s.a)	APR	--	--	7.10%
04/28/2011 12:30	US	Chicago Fed Nat Activity Index	MAR	--	--	-0.04
04/28/2011 12:30	US	GDP QoQ (Annualized)	1Q A	1.80%	--	3.10%
04/28/2011 12:30	US	GDP Price Index	1Q A	2.40%	--	0.40%
04/28/2011 12:30	US	Core PCE QoQ	1Q A	1.50%	--	0.40%
04/28/2011 12:30	US	Personal Consumption	1Q A	--	--	4.00%
04/28/2011 12:30	US	Initial Jobless Claims	23-Apr	--	--	--
04/28/2011 12:30	US	Continuing Claims	16-Apr	--	--	--
04/28/2011 12:30	US	Fed's Williams Speaks at Community Affairs				
04/28/2011 13:45	US	Bloomberg Consumer Comfort	24-Apr	--	--	--
04/28/2011 14:00	US	Pending Home Sales MoM	MAR	0.40%	--	2.10%
04/28/2011 14:00	US	Pending Home Sales YoY	MAR	--	--	-9.30%
04/28/2011 14:30	US	EIA Natural Gas Storage Change	22-Apr	--	--	--
04/28/2011 15:00	US	U.S. Fed to Purchase USD5-7 Bln				
04/28/2011 17:00	US	U.S. to Sell 7-Year Notes				
04/28/2011	JN	BOJ Target Rate	28-Apr	--	--	0.10%
04/29/2011 01:35	CH	MNI Business Condition Survey	APR	--	--	69.33
04/29/2011 08:00	EC	Euro-Zone M3 s.a. 3 mth ave.	MAR	--	--	1.70%
04/29/2011 08:00	EC	Euro-Zone M3 s.a. (YoY)	MAR	--	--	2.00%
04/29/2011 09:00	EC	Euro-Zone CPI Estimate (YoY)	APR	--	--	2.60%
04/29/2011 09:00	EC	Business Climate Indicator	APR	--	--	1.41
04/29/2011 09:00	EC	Euro-Zone Consumer Confidence	APR F	--	--	--
04/29/2011 09:00	EC	Euro-Zone Economic Confidence	APR	--	--	107.3
04/29/2011 09:00	EC	Euro-Zone Indust. Confidence	APR	--	--	6.6
04/29/2011 09:00	EC	Euro-zone Services Confidence	APR	--	--	10.8
04/29/2011 09:00	EC	Euro-Zone Unemployment Rate	MAR	--	--	9.90%
04/29/2011 12:30	US	Employment Cost Index	1Q	0.60%	--	0.40%
04/29/2011 12:30	US	PCE Core (MoM)	MAR	0.10%	--	0.20%
04/29/2011 12:30	US	Personal Spending	MAR	0.50%	--	0.70%
04/29/2011 12:30	US	PCE Core (YoY)	MAR	--	--	0.90%
04/29/2011 12:30	US	PCE Deflator (YoY)	MAR	--	--	1.60%
04/29/2011 12:30	US	Personal Income	MAR	0.40%	--	0.30%
04/29/2011 13:45	US	Chicago Purchasing Manager	APR	69.6	--	70.6
04/29/2011 13:55	US	U. of Michigan Confidence	APR F	--	--	69.6
04/29/2011 14:00	US	Annual Revisions: Retail Sales				
04/29/2011 14:00	US	NAPM-Milwaukee	APR	--	--	66
04/29/2011 15:00	US	U.S. Fed to Purchase USD5-7 Bln				
04/29/2011 16:30	US	Bernanke Speaks at Fed Community-Affairs				

Календарь отчетности компаний индекса S&P 500

Company Name	Company	Date	Time	Actual	Estimate	Surprise
Express Scripts Inc	ESRX US	4/25/2011	Aft-mkt		0.692	
Ameriprise Financial Inc	AMP US	4/25/2011	Aft-mkt		1.336	
Plum Creek Timber Co Inc	PCL US	4/25/2011	Aft-mkt		0.238	
Masco Corp	MAS US	4/25/2011	Aft-mkt		-0.031	
RadioShack Corp	RSH US	4/25/2011			0.354	
Kimberly-Clark Corp	KMB US	4/25/2011			1.175	
Jacobs Engineering Group Inc	JEC US	4/25/2011			0.623	
Johnson Controls Inc	JCI US	4/25/2011			0.553	
Coca-Cola Co/The	KO US	4/26/2011	Bef-mkt		0.869	
Roper Industries Inc	ROP US	4/26/2011	Bef-mkt		0.869	
Coach Inc	COH US	4/26/2011	Bef-mkt		0.602	
AK Steel Holding Corp	AKS US	4/26/2011	Bef-mkt		-0.006	
Hospira Inc	HSP US	4/26/2011	Bef-mkt		0.763	
United Parcel Service Inc	UPS US	4/26/2011	Bef-mkt		0.847	
Ecolab Inc	ECL US	4/26/2011	Bef-mkt		0.439	
Tellabs Inc	TLAB US	4/26/2011	11:00		-0.031	
Ryder System Inc	R US	4/26/2011	12:00		0.444	
Illinois Tool Works Inc	ITW US	4/26/2011	12:00		0.836	
McGraw-Hill Cos Inc/The	MHP US	4/26/2011	12:30		0.373	
Total System Services Inc	TSS US	4/26/2011	20:00		0.252	
Western Union Co/The	WU US	4/26/2011	20:00		0.342	
CH Robinson Worldwide Inc	CHRW US	4/26/2011	20:15		0.597	
Altera Corp	ALTR US	4/26/2011	20:15		0.643	
Becton Dickinson and Co	BDX US	4/26/2011	Aft-mkt		1.303	
Broadcom Corp	BRCM US	4/26/2011	Aft-mkt		0.35	
Stanley Black & Decker Inc	SWK US	4/26/2011	Aft-mkt		0.997	
QEP Resources Inc	QEP US	4/26/2011	Aft-mkt		0.294	
Amazon.com Inc	AMZN US	4/26/2011	Aft-mkt		0.61	
Nabors Industries Ltd	NBR US	4/26/2011	Aft-mkt		0.341	
Torchmark Corp	TMK US	4/26/2011	Aft-mkt		1.639	
Life Technologies Corp	LIFE US	4/26/2011	Aft-mkt		0.853	
FMC Technologies Inc	FTI US	4/26/2011	Aft-mkt		0.369	
Cummins Inc	CMI US	4/26/2011			1.437	

Ежедневный обзор

DeVry Inc	DV US	4/26/2011		1.232
Sigma-Aldrich Corp	SIAL US	4/26/2011		0.895
Valero Energy Corp	VLO US	4/26/2011		0.392
Lockheed Martin Corp	LMT US	4/26/2011		1.509
Range Resources Corp	RRC US	4/26/2011		0.206
United States Steel Corp	X US	4/26/2011		-0.357
Lorillard Inc	LO US	4/26/2011		1.557
Hershey Co/The	HSY US	4/26/2011		0.701
3M Co	MMM US	4/26/2011		1.438
AutoNation Inc	AN US	4/26/2011		0.427
Lexmark International Inc	LXK US	4/26/2011		1.239
Waters Corp	WAT US	4/26/2011		0.944
National Oilwell Varco Inc	NOV US	4/27/2011	Bef-mkt	1.001
Corning Inc	GLW US	4/27/2011	Bef-mkt	0.437
Parker Hannifin Corp	PH US	4/27/2011	Bef-mkt	1.533
Moody's Corp	MCO US	4/27/2011	Bef-mkt	0.537
MeadWestvaco Corp	MWV US	4/27/2011	Bef-mkt	0.238
Baker Hughes Inc	BHI US	4/27/2011	Bef-mkt	0.776
Praxair Inc	PX US	4/27/2011	Bef-mkt	1.264
SCANA Corp	SCG US	4/27/2011	Bef-mkt	0.973
Rockwell Automation Inc	ROK US	4/27/2011	Bef-mkt	1.118
Thermo Fisher Scientific Inc	TMO US	4/27/2011	Bef-mkt	0.863
Watson Pharmaceuticals Inc	WPI US	4/27/2011	Bef-mkt	0.851
DTE Energy Co	DTE US	4/27/2011	Bef-mkt	1.266
Dr Pepper Snapple Group Inc	DPS US	4/27/2011	Bef-mkt	0.459
Whirlpool Corp	WHR US	4/27/2011	10:00	1.305
WellPoint Inc	WLP US	4/27/2011	10:00	1.867
Southern Co	SO US	4/27/2011	11:00	0.527
Boeing Co/The	BA US	4/27/2011	11:30	0.715
ConocoPhillips	COP US	4/27/2011	12:30	1.877
Avery Dennison Corp	AVY US	4/27/2011	12:30	0.469
Allstate Corp/The	ALL US	4/27/2011	20:05	0.707
Teradyne Inc	TER US	4/27/2011	22:00	0.377
O'Reilly Automotive Inc	ORLY US	4/27/2011	22:30	0.79
Dun & Bradstreet Corp	DNB US	4/27/2011	Aft-mkt	1.271
Cincinnati Financial Corp	CINF US	4/27/2011	Aft-mkt	0.354

Ежедневный обзор

Equity Residential	EQR US	4/27/2011	Aft-mkt	0.565
LSI Corp	LSI US	4/27/2011	Aft-mkt	0.101
Starbucks Corp	SBUX US	4/27/2011	Aft-mkt	0.338
Varian Medical Systems Inc	VAR US	4/27/2011	Aft-mkt	0.848
Citrix Systems Inc	CTXS US	4/27/2011	Aft-mkt	0.419
AvalonBay Communities Inc	AVB US	4/27/2011	Aft-mkt	1.051
Lincoln National Corp	LNC US	4/27/2011	Aft-mkt	0.913
Fiserv Inc	FISV US	4/27/2011	Aft-mkt	1.028
Flowserve Corp	FLS US	4/27/2011	Aft-mkt	1.639
Owens-Illinois Inc	OI US	4/27/2011	Aft-mkt	0.458
Norfolk Southern Corp	NSC US	4/27/2011	Aft-mkt	0.884
Assurant Inc	AIZ US	4/27/2011	Aft-mkt	1.245
Novellus Systems Inc	NVLS US	4/27/2011		1.037
Northrop Grumman Corp	NOC US	4/27/2011		1.565
Allegheny Technologies Inc	ATI US	4/27/2011		0.497
Wyndham Worldwide Corp	WYN US	4/27/2011		0.394
Cabot Oil & Gas Corp	COG US	4/27/2011		0.121
Xilinx Inc	XLNX US	4/27/2011		0.52
Akamai Technologies Inc	AKAM US	4/27/2011		0.365
Stericycle Inc	SRCL US	4/27/2011		0.653
Ford Motor Co	F US	4/27/2011		0.493
eBay Inc	EBAY US	4/27/2011		0.462
Exelon Corp	EXC US	4/27/2011		1.047
Sealed Air Corp	SEE US	4/27/2011		0.392
Hess Corp	HES US	4/27/2011		1.867
Aflac Inc	AFL US	4/27/2011		1.532
Tyco International Ltd	TYC US	4/28/2011	Bef-mkt	0.678
Ball Corp	BLL US	4/28/2011	Bef-mkt	0.48
Mead Johnson Nutrition Co	MJN US	4/28/2011	Bef-mkt	0.706
CME Group Inc	CME US	4/28/2011	Bef-mkt	4.187
Cardinal Health Inc	CAH US	4/28/2011	Bef-mkt	0.689
Bemis Co Inc	BMS US	4/28/2011	Bef-mkt	0.525
Apache Corp	APA US	4/28/2011	Bef-mkt	2.563
Waste Management Inc	WM US	4/28/2011	Bef-mkt	0.41
Host Hotels & Resorts Inc	HST US	4/28/2011	Bef-mkt	0.123
Xcel Energy Inc	XEL US	4/28/2011	Bef-mkt	0.427

Ежедневный обзор

AmerisourceBergen Corp	ABC US	4/28/2011	Bef-mkt	0.688
Pulte Group Inc	PHM US	4/28/2011	Bef-mkt	-0.121
International Paper Co	IP US	4/28/2011	Bef-mkt	0.589
Medco Health Solutions Inc	MHS US	4/28/2011	Bef-mkt	0.881
Starwood Hotels & Resorts	HOT US	4/28/2011	Bef-mkt	0.255
Coca-Cola Enterprises Inc	CCE US	4/28/2011	Bef-mkt	0.331
EQT Corp	EQT US	4/28/2011	Bef-mkt	0.55
Time Warner Cable Inc	TWC US	4/28/2011	Bef-mkt	0.998
DENTSPLY International Inc	XRAY US	4/28/2011	10:00	0.478
Aetna Inc	AET US	4/28/2011	10:00	0.959
Dow Chemical Co/The	DOW US	4/28/2011	10:30	0.659
Consol Energy Inc	CNX US	4/28/2011	11:00	0.77
Zimmer Holdings Inc	ZMH US	4/28/2011	11:00	1.123
PepsiCo Inc/NC	PEP US	4/28/2011	11:00	0.73
Motorola Solutions Inc	MSI US	4/28/2011	11:00	0.322
Sprint Nextel Corp	S US	4/28/2011	11:00	-0.196
Discovery Communications Inc	DISCA US	4/28/2011	11:30	0.468
Harman International Industries Inc	HAR US	4/28/2011	12:00	0.457
Franklin Resources Inc	BEN US	4/28/2011	12:30	1.995
CMS Energy Corp	CMS US	4/28/2011	12:30	0.406
VeriSign Inc	VRSN US	4/28/2011	20:05	0.324
KLA-Tencor Corp	KLAC US	4/28/2011	20:15	1.248
Eastman Chemical Co	EMN US	4/28/2011	21:00	1.926
Cliffs Natural Resources Inc	CLF US	4/28/2011	Aft-mkt	2.251
Federated Investors Inc	FII US	4/28/2011	Aft-mkt	0.434
Southwestern Energy Co	SWN US	4/28/2011	Aft-mkt	0.396
Cerner Corp	CERN US	4/28/2011	Aft-mkt	0.763
Monster Worldwide Inc	MWW	4/28/2011	Aft-mkt	0.026
Leggett & Platt Inc	LEG US	4/28/2011	Aft-mkt	0.207
Microsoft Corp	MSFT US	4/28/2011	Aft-mkt	0.557
Dominion Resources Inc/VA	D US	4/28/2011		0.926
CB Richard Ellis Group Inc	CBG US	4/28/2011		0.12
Colgate-Palmolive Co	CL US	4/28/2011		1.161
Occidental Petroleum Corp	OXY US	4/28/2011		1.788
Interpublic Group of Cos Inc/The	IPG US	4/28/2011		-0.093
Cameron International Corp	CAM US	4/28/2011		0.572

Ежедневный обзор

Goodyear Tire & Rubber Co/The	GT US	4/28/2011		0.11
Celgene Corp	CELG US	4/28/2011		0.803
Noble Energy Inc	NBL US	4/28/2011		1.105
Republic Services Inc	RSG US	4/28/2011		0.412
Bristol-Myers Squibb Co	BMY US	4/28/2011		0.527
Viacom Inc	VIA/B US	4/28/2011		0.612
Helmerich & Payne Inc	HP US	4/28/2011		0.972
Equifax Inc	EFX US	4/28/2011		0.582
Pinnacle West Capital Corp	PNW US	4/28/2011		0.044
Safeway Inc	SWY US	4/28/2011		0.228
Raytheon Co	RTN US	4/28/2011		1.088
Exxon Mobil Corp	XOM US	4/28/2011		2.004
Procter & Gamble Co/The	PG US	4/28/2011		0.97
Expedia Inc	EXPE US	4/28/2011		0.262
First Solar Inc	FSLR US	4/28/2011		1.17
Invesco Ltd	IVZ US	4/28/2011		0.42
Motorola Mobility Holdings Inc	MMI US	4/28/2011		-0.122
General Dynamics Corp	GD US	4/28/2011		1.61
Harris Corp	HRS US	4/28/2011		1.139
DR Horton Inc	DHI US	4/29/2011	Bef-mkt	-0.036
Simon Property Group Inc	SPG US	4/29/2011	Bef-mkt	1.538
NextEra Energy Inc	NEE US	4/29/2011	Bef-mkt	0.944
Newell Rubbermaid Inc	NWL US	4/29/2011	Bef-mkt	0.278
Weyerhaeuser Co	WY US	4/29/2011	Bef-mkt	
Apartment Investment &	AIV US	4/29/2011	Bef-mkt	0.358
Caterpillar Inc	CAT US	4/29/2011	11:30	1.289
FLIR Systems Inc	FLIR US	4/29/2011	11:30	0.355
Merck & Co Inc	MRK US	4/29/2011		0.846
VF Corp	VFC US	4/29/2011		1.61
Entergy Corp	ETR US	4/29/2011		1.273
Coventry Health Care Inc	CVH US	4/29/2011		0.519
Iron Mountain Inc	IRM US	4/29/2011		0.272
Pitney Bowes Inc	PBI US	4/29/2011		0.533
ITT Corp	ITT US	4/29/2011		0.931
AON Corp	AON US	4/29/2011		0.804
Chevron Corp	CVX US	4/29/2011		2.993

Mylan Inc/PA	MYL US	4/29/2011	0.43
--------------	--------	-----------	------

Календарь отчетности компаний индекса Dow Jones Eurostoxx 600

Company Name	Company Ticker	Date	Time	Actual	Estimate	Surprise
Banco de Valencia SA	BVA SM	4/25/2011				
Puma AG Rudolf Dassler Sport	PUM GR	4/26/2011	6:00		5.25	
STMicroelectronics NV	STM IM	4/26/2011	Aft-mkt		0.144	
UBS AG	UBSN VX	4/26/2011			0.434	
Teleperformance	RCF FP	4/26/2011				
Sydbank A/S	SYDB DC	4/26/2011			1.313	
Ferrovial SA	FER SM	4/27/2011	Bef-mkt			
Credit Suisse Group AG	CSGN VX	4/27/2011	4:45		1.245	
Software AG	SOW GR	4/27/2011	5:00		1.419	
Koninklijke DSM NV	DSM NA	4/27/2011	5:15		0.707	
Svenska Handelsbanken AB	SHBA SS	4/27/2011	5:30		5.137	
Volvo AB	VOLVB SS	4/27/2011	5:30		1.711	
Barclays PLC	BARC LN	4/27/2011	6:00			
ARM Holdings PLC	ARM LN	4/27/2011	6:00		0.025	
BP PLC	BP/ LN	4/27/2011	6:00		0.298	
Scania AB	SCVB SS	4/27/2011	7:30		2.831	
Getinge AB	GETIB SS	4/27/2011	10:00		1.769	
GlaxoSmithKline PLC	GSK LN	4/27/2011	11:00		0.297	
Alfa Laval AB	ALFA SS	4/27/2011	12:00		1.623	
Orion OYJ	ORNBV FH	4/27/2011			0.415	
Electrolux AB	ELUXB SS	4/27/2011			2.345	
Telefonaktiebolaget LM Ericsson	ERICB SS	4/27/2011			1.115	

Ежедневный обзор

Dassault Systemes SA	DSY FP	4/27/2011		0.569
Ebro Foods SA	EBRO SM	4/27/2011		
Volkswagen AG	VOW GR	4/27/2011		3.413
ENI SpA	ENI IM	4/27/2011		0.58
Grifols SA	GRF SM	4/27/2011		0.19
QIAGEN NV	QGEN US	4/27/2011		0.209
Logitech International SA	LOGN VX	4/28/2011	2:00	0.779
Imerys SA	NK FP	4/28/2011	Bef-mkt	
Deutsche Bank AG	DBK GR	4/28/2011	Bef-mkt	
SAP AG	SAP GR	4/28/2011	Bef-mkt	0.481
ABB Ltd	ABBN VX	4/28/2011	3:00	0.304
Randstad Holding NV	RAND NA	4/28/2011	Bef-mkt	0.425
Unilever PLC	ULVR LN	4/28/2011	Bef-mkt	0.23
Nordea Bank AB	NDA SS	4/28/2011	4:45	0.186
Nobel Biocare Holding AG	NOBN VX	4/28/2011	4:45	0.127
Rhoen Klinikum AG	RHK GR	4/28/2011	5:00	0.25
Swedbank AB	SWEDA SS	4/28/2011	5:00	2.981
Technip SA	TEC FP	4/28/2011	5:00	0.88
Mobistar SA	MOBB BB	4/28/2011	5:00	1.025
Koninklijke KPN NV	KPN NA	4/28/2011	5:30	0.287
Aixtron SE NA	AIXA GR	4/28/2011	5:30	0.536
Sanofi-Aventis SA	SAN FP	4/28/2011	5:30	1.624
Bayer AG	BAYN GR	4/28/2011	5:30	1.377
Royal Dutch Shell PLC	RDSA LN	4/28/2011	6:00	0.954
Unilever NV	UNA NA	4/28/2011	6:00	0.23
Fortum OYJ	FUM1V FH	4/28/2011	6:00	0.506
Kesko OYJ	KESBV FH	4/28/2011	6:00	0.239
British Sky Broadcasting Group plc	BSY LN	4/28/2011	6:00	0.098
Verbund AG	VER AV	4/28/2011	6:00	0.31
Banco de Sabadell SA	SAB SM	4/28/2011	6:30	0.04

Ежедневный обзор

Konecranes OYJ	KCR1V FH	4/28/2011	6:30	0.356
UPM-Kymmene OYJ	UPM1V FH	4/28/2011	6:30	0.285
Assa Abloy AB	ASSAB SS	4/28/2011	10:00	2.433
Metso OYJ	MEO1V FH	4/28/2011	12:30	0.482
SGL Carbon SE	SGL GR	4/28/2011		0.24
JM AB	JM SS	4/28/2011		2.023
Finmeccanica SpA	FNC IM	4/28/2011		0.31
Suez Environnement Co	SEV FP	4/28/2011		
Schindler Holding AG	SCHP SW	4/28/2011		1.2
Tenaris SA	TEN IM	4/28/2011		0.25
Banco Santander SA	SAN SM	4/28/2011		0.272
Luxottica Group SpA	LUX IM	4/28/2011		
Erste Group Bank AG	EBS AV	4/28/2011		0.79
Merck KGaA	MRK GR	4/28/2011		1.93
Novo Nordisk A/S	NOVOB DC	4/28/2011		7.155
Iberdrola Renovables SA	IBR SM	4/28/2011		0.04
Deutsche Boerse AG	DB1 GR	4/28/2011		1.07
Bolsas y Mercados Espanoles с.а.	BME SM	4/28/2011		0.425
AstraZeneca PLC	AZN LN	4/28/2011		1.973
Whitbread PLC	WTB LN	4/28/2011		1.164
Shire PLC	SHP LN	4/28/2011		0.413
Galp Energia SGPS SA	GALP PL	4/29/2011	Bef-mkt	0.115
Norsk Hydro ASA	NHY NO	4/29/2011	5:00	0.607
YIT OYJ	YTY1V FH	4/29/2011	5:00	0.316
Yara International ASA	YAR NO	4/29/2011	5:00	7.881
Daimler AG	DAI GR	4/29/2011	5:30	1.283
Total SA	FP FP	4/29/2011	6:00	1.289
Novozymes A/S	NZYMB DC	4/29/2011	6:00	8.04
SSAB AB	SSABA SS	4/29/2011	6:00	0.534
Outotec OYJ	OTE1V FH	4/29/2011	9:00	0.325

Ежедневный обзор

Svenska Cellulosa AB	SCAB SS	4/29/2011	10:00	2.414
Neste Oil OYJ	NES1V FH	4/29/2011	10:00	0.165
Repsol YPF SA	REP SM	4/29/2011		0.541
ACS Actividades de Construccion y Servicios SA	ACS SM	4/29/2011		0.795
Red Electrica Corp SA	REE SM	4/29/2011		
Criteria Caixacorp SA	CRI SM	4/29/2011		
DSV A/S	DSV DC	4/29/2011		1.755

Заявление об ограничении ответственности: Настоящие обзоры подготовлены в информационных целях. Они ни в коем случае не являются и не должны рассматриваться как предложение купить или продать соответствующие ценные бумаги. Информация, содержащаяся в данных обзорах, получена из вызывающих доверия открытых источников. Несмотря на то, что при подготовке обзоров были предприняты необходимые меры для получения достоверной информации, ИК РУСС-ИНВЕСТ не исключает возможность включения в обзор ошибочной информации, предоставленной соответствующими источниками, и не несет за это ответственности. ИК РУСС-ИНВЕСТ, его работники и клиенты могут быть заинтересованы в покупке или продаже ценных бумаг, упомянутых в обзорах.

www.russ-invest.com**Москва**

Тел: +7(495) 363-93-80
 Факс: +7(495) 363-93-90
 E-mail: mail@russ-invest.com
 Адрес: Москва, 119019, 5-3/12
 Нащокинский переулок

Санкт-Петербург

Тел: +7(812) 337-55-37
 Факс: +7(812) 337-55-37
 E-mail: spb@russ-invest.com
 Адрес: 190002, СПб, Набережная р.
 Фонтанки, 52

Самара

Телефон: +7 (846) 262-75-52
 Факс: +7 (846) 262-75-52
 E-mail: sam@russ-invest.com
 Адрес: 443067, Самара, ул. Гагарина,
 дом 95

© 2007 | ОАО «ИК РУСС-ИНВЕСТ»
 Лицензия ФСФР №077-08757-000100 и №077-08755-001000
 Лицензия ФСФР №177-06310-100000 и №177-06312-010000
 Лицензия ФСФР №906