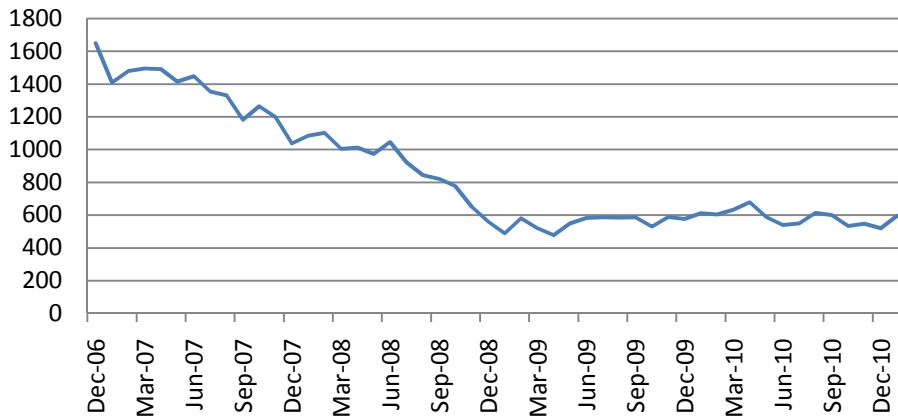
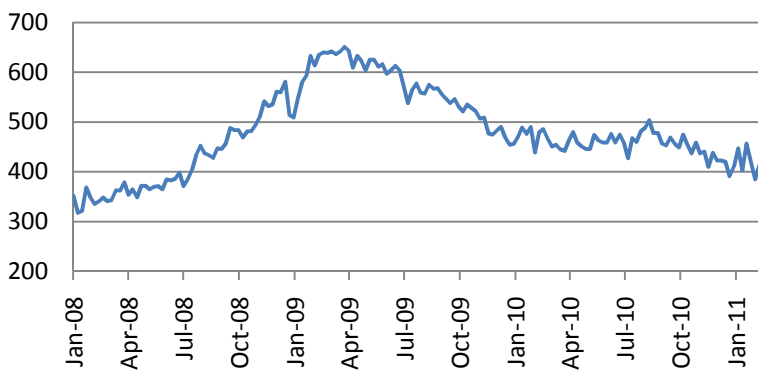


February 25, 2011

New Home Sales – down 12.6% in January



Initial jobless claims – down to 391 000 vs consensus forecast of 405 000



Macro Indicators		
CDS HY 5Y	407.24	+2.24%
ITX Crossover	285.36	+1.67%
CDS Japan 5Y	82.50	-0.81%
CDS EM 5Y	111.74	-0.08%
CDS Russia 5Y	150.16	-1.02%
US Tsys 10Y	3.58%	+0.30%
US Tsys 5Y	2.24%	+0.19%
Brazil 10Y	4.41%	-0.57%
Germany 10Y	2.98%	+0.15%
EUR/USD	1.3732	-0.07%
USD/JPY	81.95	+0.54%
EUR/GBP	0.8490	-0.06%
Oil Brent	117.02	+5.19%
Gold	1415.5	+0.11%
Copper	9425	-1.62%
Nickel	28658	+0.11%
S&P 500	1296	-0.73%
Russell 2000	799.65	-1.64%
Bovespa	66910.48	+0.71%
Topix	930	-0.69%
Shanghai Comp	2,878.60	+0.56%
S&P/ASX 300	4,809.30	-0.76%
Sensex 30	17,710.13	-2.58%
Bovespa	66,910.48	+0.71%
DJ Euro Stoxx	2938	-0.71%
CAC Futures	3991	-0.60%
DAX Futures	7130.5	-1.08%
CBOE Put/Call	0.72	+2.86%
CBOE	817.39	-0.46%
VIX	22.13	+6.39%
VSTOXX	24.9891	+4.42%

Factor Assessment		
Factor	Grade	Prev. Grade
US credit risks	3	3
Fed Activity	5	4
Corporate news	8	8
Economic statistics	8	8
Inflation concerns	4	4
China tightening	4	4
European Sovereign	5	5
Risks		

*As of 7:00 GMT, Bloomberg

Earnings season (sectoral results – S&P 500)

Sector	Reported	Total	Growth	Surprise	Pos Surp	Neg Surp
All Securities	450	500	36.78%	5.71%	319	129
Oil & Gas	36	38	39.76%	8.22%	27	9
Basic Materials	25	26	47.77%	27.82%	18	7
Industrials	68	73	21.62%	5.00%	46	21
Consumer Goods	47	54	-2.32%	-1.41%	33	14
Health Care	44	45	7.22%	3.55%	35	9
Consumer Services	55	74	15.02%	5.28%	42	12
Telecommunications	9	10	-1.07%	0.26%	3	6
Utilities	31	35	2.34%	0.32%	13	18
Financials	80	83	931.02%	5.60%	57	23
Technology	55	62	24.26%	8.68%	45	10

Earnings season (sectoral results – Stoxx 600)

Сектор	Опубл	Всег	Усредн.рос	Сравн. с	Лучше	Хуже
All Securities	223	227	7.83%	1.88%	125	88
Oil & Gas	22	22	16.45%	-6.06%	12	10
Basic Materials	23	23	27.04%	6.18%	13	8
Industrials	33	33	53.90%	-2.16%	15	16
Consumer Goods	20	21	91.24%	6.73%	11	9
Health Care	23	24	-4.75%	19.66%	15	8
Consumer Services	14	15	45.21%	-6.55%	7	6
Telecommunication	14	14	-18.57%	5.70%	9	5
Utilities	8	8	-40.66%	-37.83%	4	4
Financials	52	53	-7.27%	5.16%	30	17
Technology	14	14	55.02%	9.69%	9	5

Daily Market Report

Most active stocks in Europe*

Stock	Volume	Change
EADS NV	20.2	-2.65%
BERKELEY GROUP	948.5	-2.47%
DEUTSCHE TELEKOM	9.727	-1.81%
ELAN CORP PLC	4.55	-1.50%
TENARIS SA	16.11	-1.47%
DERWENT LONDON	1598	-1.36%
STATOIL ASA	146.4	-1.35%
WOLTERS KLUWER	16.6	-1.34%
GAMESA	5.92	+3.69%
WENDEL	71.94	+3.79%
EURASIAN NATURAL	968.5	+4.36%
ALLIED IRISH BK	0.255	+4.42%
MEGGITT PLC	351	+4.81%
VALEO SA	43.005	+5.46%
CGGVERITAS	26	+8.38%

S&P 500 Sub-index	Last	Change
CONS	315.79	+0.44%
DISCRET		
CONS	307.00	+0.23%
STAPLES		
ENERGY	571.28	+0.58%
FINANCIALS	231.16	+0.21%
HEALTH CARE	378.82	+0.25%
INDUSTRIALS	329.44	+0.31%
INFO TECH	438.39	-0.06%
MATERIALS	250.27	-1.02%
TELECOM	127.21	+0.11%
SERV		
UTILITIES	161.30	+0.00%

DJIA Eurostoxx	Last	Change
SX3P	347.09	+0.08%
SX4P	554.06	+0.48%
SX6P	325.49	-0.31%
SX7P	216.14	+0.67%
SX86P	118.4	+0.19%
SX8P	227.13	+0.89%
SXAP	333.1	+0.89%
SXDP	383.23	+0.28%
SXEP	355.03	-0.14%
SXFP	270.73	+0.55%
SXIP	172.56	+0.22%
SXKP	278.12	-0.33%
SXMP	183.54	+0.29%
SXNP	325.24	+0.39%
SXOP	283.89	+0.75%
SXPP	596.36	+0.72%
SXQP	403.22	+0.21%
SXRP	262.51	+0.14%
SXTP	127.2	+0.45%
SXXP	280.56	+0.29%

Dow Jones Stoxx 600 Europe Index, daily



The index has broken wedge upper line as a resistance level but went back under the line, finding support above 282. Final target of the current wave still may be around 297.

However, pessimistic scenario will be activated if the support at 280 is broken (this will point 258, 243, 210 levels as the final targets of the downward leg (C)).

Important support levels: 275.8, 263, 256, 243, 238, 217.

Important resistance levels – 280, 275, 272.

Daily Market Report

EURUSD, daily



EURUSD current pattern is likely a zigzag in a wide triangle, which has its lower bound around 1.17. After triangle upper line around 1.425 is tested, another leg down with a support around 1.26 should unwind in the coming days.

However, as the upper descending line at 1.37 is broken up, the probability of testing another major resistance at 1.43 has increased.

Daily Market Report

Macroeconomic calendar*						
Время, GMT	Страна	Данные	Период	Прогноз	Значение	Прошл.
02/21/2011 00:01	UK	Rightmove House Prices (MoM)	FEB	--	3.10%	0.30%
02/21/2011 00:01	UK	Rightmove House Prices (YoY)	FEB	--	0.30%	0.40%
02/21/2011 04:30	JN	All Industry Activity Index (MoM)	DEC	--	-0.20%	-0.10%
02/21/2011 07:00	JN	Convenience Store Sales YoY	JAN	--	5.10%	3.30%
02/21/2011 08:30	GE	PMI Manufacturing	FEB A	60.3	62.6	60.5
02/21/2011 08:30	GE	PMI Services	FEB A	60.2	59.5	60.3
02/21/2011 09:00	EC	PMI Composite	FEB A	56.9	--	57
02/21/2011 09:00	GE	IFO - Business Climate	FEB	110.3	--	110.3
02/21/2011 09:00	GE	IFO - Current Assessment	FEB	113	--	112.8
02/21/2011 09:00	GE	IFO - Expectations	FEB	107.5	--	107.8
02/21/2011 09:00	EC	PMI Manufacturing	FEB A	57.2	--	57.3
02/21/2011 09:00	EC	PMI Services	FEB A	55.9	--	55.9
02/21/2011 14:30	EC	ECB Calls for Bids in 7-Day Main Refinancing				
02/21/2011 14:30	EC	ECB Announces Bond Purchases				
02/21/2011 16:00	IT	Mario Draghi Speaks at Conference in				
02/21/2011 17:00	GE	ECB's Stark Speaks in Frankfurt				
02/21/2011 17:00	EC	ECB's Weber Speaking in Dusseldorf				
02/22/2011 07:00	GE	GfK Consumer Confidence Survey	MAR	--	--	5.7
02/22/2011 09:00	CH	ECB's Bini Smaghi Speaks in Hong Kong				
02/22/2011 09:30	UK	Public Finances (PSNCR)	JAN	-6.0B	--	25.5B
02/22/2011 09:30	UK	PSNB ex Interventions	JAN	-0.1B	--	16.8B
02/22/2011 09:30	UK	Public Sector Net Borrowing	JAN	-0.3B	--	15.3B
02/22/2011 10:15	EC	ECB Announces Allotment in 7-Day Main				
02/22/2011 12:00	EC	ECB Announces Allotment in 7-Day Term				
02/22/2011 14:00	US	S&P/CaseShiller Home Price Ind	DEC	--	--	143.85
02/22/2011 14:00	US	S&P/CS 20 City MoM% SA	DEC	-0.50%	--	-0.54%
02/22/2011 14:00	US	S&P/CS Composite-20 YoY	DEC	-2.40%	--	-1.59%
02/22/2011 14:00	US	S&P/Case-Shiller US HPI	4Q	--	--	135.48
02/22/2011 14:00	US	S&P/Case-Shiller US HPI YOY%	4Q	--	--	-1.51%
02/22/2011 14:30	EC	ECB Calls for Bids in 3-Month Tender				
02/22/2011 15:00	US	Consumer Confidence	FEB	65	--	60.6
02/22/2011 15:00	US	Richmond Fed Manufact. Index	FEB	18	--	18
02/22/2011 16:00	US	U.S. Fed to Purchase USD6-8 Bln				
02/22/2011 16:30	US	U.S. to Sell USD32 Bln 3-Month Bills				
02/22/2011 16:30	US	U.S. to Sell USD30 Bln 6-Month Bills				
02/22/2011 18:00	US	Fed's Kocherlakota Speaks in Pierre, South				
02/22/2011 18:00	US	U.S. to Sell USD35 Bln 2-Year Notes				
02/22/2011 23:50	JN	Corp Service Price Index (YoY)	JAN	-1.30%	--	-1.30%
02/22/2011 23:50	JN	Merchnds Trade Balance Total	JAN	¥49.3B	--	¥727.7B
02/22/2011 23:50	JN	Adjusted Merchnds Trade Bal.	JAN	¥712.0B	--	¥707.3B
02/22/2011 23:50	JN	Merchnds Trade Exports YoY	JAN	7.4	--	13

Daily Market Report

02/22/2011 23:50	JN	Merchnds Trade Imports YoY	JAN	8.1	--	10.6
02/23/2011 01:00	JN	Small Business Confidence	FEB	--	--	45.8
02/23/2011 08:15	EC	ECB Calls for Bids in 7-Day Dollar Tender				
02/23/2011 09:30	UK	Bank of England Minutes				
02/23/2011 09:30	UK	BBA Loans for House Purchase	JAN	29250	--	28726
02/23/2011 10:00	EC	ECB Announces Allotment in 7-Day Dollar				
02/23/2011 10:00	EC	Industrial New Orders NSA (YoY)	DEC	16.20%	--	19.90%
02/23/2011 10:00	EC	Industrial New Orders SA (MoM)	DEC	-1.00%	--	2.10%
02/23/2011 10:15	EC	ECB Announces Allotment in 3-Month				
02/23/2011 12:00	US	MBA Mortgage Applications	18-Feb	--	--	-9.50%
02/23/2011 15:00	US	Existing Home Sales	JAN	5.20M	--	5.28M
02/23/2011 15:00	US	Existing Home Sales MoM	JAN	-1.50%	--	12.30%
02/23/2011 16:00	US	U.S. Fed to Purchase USD1.5-2.5 Bln				
02/23/2011 16:30	US	U.S. to Sell 4-Week Bills				
02/23/2011 17:00	EC	ECB's Trichet, Quaden Speak in Liege,				
02/23/2011 17:15	EC	ECB's Axel Weber Speaks At Zurich				
02/23/2011 17:30	US	Kansas City Fed's Hoenig Speaks on				
02/23/2011 18:00	US	U.S. to Sell USD35 Bln 5-Year Notes				
02/23/2011 18:30	US	Fed's Plosser Speaks on Economic Outlook				
02/23/2011 21:30	US	API U.S. Crude Oil Inventories	18-Feb	--	--	-354K
02/23/2011 21:30	US	API Cushing Crude OK Inventory	18-Feb	--	--	250K
02/23/2011 21:30	US	API U.S. Distillate Inventory	18-Feb	--	--	-1176K
02/23/2011 21:30	US	API U.S. Gasoline Inventories	18-Feb	--	--	1235K
02/23/2011 23:50	JN	Japan Buying Foreign Bonds	18-Feb	--	--	-¥115.7B
02/23/2011 23:50	JN	Japan Buying Foreign Stocks	18-Feb	--	--	-¥7.8B
02/23/2011 23:50	JN	Foreign Buying Japan Bonds	18-Feb	--	--	-¥259.3B
02/23/2011 23:50	JN	Foreign Buying Japan Stocks	18-Feb	--	--	¥192.2B
02/24/2011 07:00	GE	GDP nsa (YoY)	4Q F	4.00%	--	4.00%
02/24/2011 07:00	GE	Domestic Demand	4Q F	--	--	0.40%
02/24/2011 07:00	GE	Exports	4Q F	--	--	2.30%
02/24/2011 07:00	GE	Capital Investment	4Q F	2.00%	--	1.30%
02/24/2011 07:00	GE	Government Spending	4Q F	0.20%	--	1.10%
02/24/2011 07:00	GE	Construction Investment	4Q F	--	--	-0.40%
02/24/2011 07:00	GE	Imports	4Q F	--	--	1.90%
02/24/2011 07:00	GE	Private Consumption	4Q F	0.20%	--	0.40%
02/24/2011 07:00	GE	GDP s.a. (QOQ)	4Q F	0.40%	--	0.40%
02/24/2011 07:00	GE	GDP wda (YoY)	4Q F	4.00%	--	4.00%
02/24/2011 10:00	EC	Business Climate Indicator	FEB	1.61	--	1.58
02/24/2011 10:00	EC	Euro-Zone Consumer Confidence	FEB F	-10	--	-11.2
02/24/2011 10:00	EC	Euro-Zone Economic Confidence	FEB	106.8	--	106.5
02/24/2011 10:00	EC	Euro-Zone Indust. Confidence	FEB	6.5	--	6
02/24/2011 10:00	EC	Euro-zone Services Confidence	FEB	9.5	--	9.2
02/24/2011 11:00	UK	CBI Reported Sales	FEB	28	--	37
02/24/2011 13:30	US	Fed's Bullard Speaks in Bowling Green,				

Daily Market Report

02/24/2011 13:30	US	Chicago Fed Nat Activity Index	JAN	0.18	--	0.03
02/24/2011 13:30	US	Initial Jobless Claims	19-Feb	405K	--	410K
02/24/2011 13:30	US	Continuing Claims	12-Feb	3880K	--	3911K
02/24/2011 13:30	US	Durable Goods Orders	JAN	3.00%	--	-2.50%
02/24/2011 13:30	US	Durables Ex Transportation	JAN	0.50%	--	0.50%
02/24/2011 13:30	US	Cap Goods Orders Nondef Ex Air	JAN	-1.00%	--	1.40%
02/24/2011 13:30	US	Cap Goods Ship Nondef Ex Air	JAN	--	--	1.70%
02/24/2011 14:45	US	Bloomberg Consumer Comfort	20-Feb	--	--	-43.4
02/24/2011 15:00	US	New Home Sales	JAN	300K	--	329K
02/24/2011 15:00	US	New Home Sales MoM	JAN	-8.80%	--	17.50%
02/24/2011 15:00	US	House Price Purchase Index QoQ	4Q	-1.50%	--	-1.60%
02/24/2011 15:00	US	House Price Index MoM	DEC	-0.10%	--	0.00%
02/24/2011 15:30	US	EIA Natural Gas Storage Change	18-Feb	--	--	-233
02/24/2011 16:00	US	U.S. Fed to Purchase USD4-6 Bln				
02/24/2011 16:00	US	DOE U.S. Crude Oil Inventories	18-Feb	--	--	860K
02/24/2011 16:00	US	DOE Cushing OK Crude Inventory	18-Feb	--	--	250K
02/24/2011 16:00	US	DOE U.S. Distillate Inventory	18-Feb	--	--	-3096K
02/24/2011 16:00	US	DOE U.S. Gasoline Inventories	18-Feb	--	--	205K
02/24/2011 16:00	US	DOE U.S. Refinery Utilization	18-Feb	--	--	-3.50%
02/24/2011 16:00	US	DOE Crude Oil Implied Demand	18-Feb	--	--	13753
02/24/2011 16:00	US	DOE Distillate Implied Demand	18-Feb	--	--	4665.3
02/24/2011 16:00	US	DOE Gasoline Implied Demand	18-Feb	--	--	9032.6
02/24/2011 18:00	US	U.S. to Sell USD29 Bln 7-Year Notes				
02/24/2011 19:30	PO	Bank of Portugal Governor Speaks at				
02/24/2011 23:30	JN	Tokyo CPI YoY	FEB	-0.20%	--	-0.10%
02/24/2011 23:30	JN	Tokyo CPI Ex-Fresh Food YoY	FEB	-0.30%	--	-0.20%
02/24/2011 23:30	JN	Tokyo CPI Ex Food, Energy YoY	FEB	-0.30%	--	-0.30%
02/24/2011 23:30	JN	Natl CPI YoY	JAN	-0.10%	--	0.00%
02/24/2011 23:30	JN	Natl CPI Ex-Fresh Food YoY	JAN	-0.30%	--	-0.40%
02/24/2011 23:30	JN	Natl CPI Ex Food, Energy YoY	JAN	-0.60%	--	-0.70%
24-28 FEB	UK	Nat'wide House prices sa (MoM)	FEB	-0.20%	--	-0.10%
24-28 FEB	UK	Nat'wide House prices nsa(YoY)	FEB	-0.20%	--	-1.10%
02/25/2011 00:01	UK	GfK Consumer Confidence Survey	FEB	-27	--	-29
02/25/2011 01:35	CH	MNI Business Condition Survey	FEB	--	--	61.11
02/25/2011 09:00	EC	Euro-Zone M3 s.a. 3 mth ave.	JAN	2.00%	--	1.60%
02/25/2011 09:00	EC	Euro-Zone M3 s.a. (YoY)	JAN	2.10%	--	1.70%
02/25/2011 09:30	UK	GDP (QoQ)	4Q P	-0.50%	--	-0.50%
02/25/2011 09:30	UK	GDP (YoY)	4Q P	1.70%	--	1.70%
02/25/2011 09:30	UK	Private Consumption	4Q P	-0.20%	--	0.30%
02/25/2011 09:30	UK	Government Spending	4Q P	-0.40%	--	-0.40%
02/25/2011 09:30	UK	Gross Fixed Capital Formation	4Q P	-0.20%	--	3.40%
02/25/2011 09:30	UK	Exports	4Q P	1.50%	--	1.50%
02/25/2011 09:30	UK	Imports	4Q P	1.80%	--	1.70%
02/25/2011 09:30	UK	Index of Services (MoM)	DEC	-1.10%	--	0.00%

Daily Market Report

02/25/2011 09:30	UK	Index of Services (3mth/3mth)	DEC	-0.40%	--	0.50%
02/25/2011 09:30	UK	Total Business Investment(QoQ)	4Q P	-0.40%	--	3.10%
02/25/2011 09:30	UK	Total Business Investment(YoY)	4Q P	12.60%	--	8.90%
02/25/2011 12:00	AS	ECB's Nowotny Speaks in Vienna				
02/25/2011 13:30	US	GDP QoQ (Annualized)	4Q S	3.30%	--	3.20%
02/25/2011 13:30	US	GDP Price Index	4Q S	0.30%	--	0.30%
02/25/2011 13:30	US	Core PCE QoQ	4Q S	0.40%	--	0.40%
02/25/2011 13:30	US	Personal Consumption	4Q S	4.20%	--	4.40%
02/25/2011 14:55	US	U. of Michigan Confidence	FEB F	75.4	--	75.1
02/25/2011 15:15	US	Fed's Lacker, Diamond Discuss Report on				
02/25/2011 16:00	US	U.S. Fed to Purchase USD6-8 Bln				
02/25/2011 18:00	US	Baker Hughes U.S. Rig Count	25-Feb	--	--	1713
02/25/2011 18:30	US	ECB's Constancio Speaks in New York				
02/25/2011 18:30	US	Fed's Yellen, BOE's Bean, ECB's Constancio				
02/25/2011 18:30	UK	Bank of England's Charles Bean Speaks in				
02/25/2011	GE	Consumer Price Index (MoM)	FEB P	--	--	-0.40%
02/25/2011	GE	Consumer Price Index (YoY)	FEB P	--	--	2.00%
02/25/2011	GE	CPI - Brandenburg (MoM)	FEB	--	--	-0.50%
02/25/2011	GE	CPI - Brandenburg (YoY)	FEB	--	--	1.50%
02/25/2011	GE	CPI - Bavaria (MoM)	FEB	--	--	-0.30%
02/25/2011	GE	CPI - Bavaria (YoY)	FEB	--	--	2.00%
02/25/2011	GE	CPI - Baden Wuerttemberg (MoM)	FEB	--	--	-0.40%
02/25/2011	GE	CPI - Baden Wuerttemberg (YoY)	FEB	--	--	2.10%
02/25/2011	GE	CPI - Hesse (MoM)	FEB	--	--	-0.50%
02/25/2011	GE	CPI - Hesse (YoY)	FEB	--	--	1.60%
02/25/2011	GE	CPI - EU Harmonised (MoM)	FEB P	--	--	-0.50%
02/25/2011	GE	CPI - EU Harmonised (YoY)	FEB P	--	--	2.00%
02/25/2011	GE	CPI - North Rhine-West. (MoM)	FEB	--	--	-0.50%
02/25/2011	GE	CPI - North Rhine-West. (YoY)	FEB	--	--	2.00%
02/25/2011	GE	CPI - Saxony (MoM)	FEB	--	--	-0.50%
02/25/2011	GE	CPI - Saxony (YoY)	FEB	--	--	1.90%
25-28 FEB	CH	Leading Index	JAN	--	--	100.76
02/27/2011 23:50	JN	Industrial Production (MoM)	JAN P	--	--	3.30%
02/27/2011 23:50	JN	Retail Trade MoM SA	JAN	--	--	-4.10%
02/27/2011 23:50	JN	Industrial Production YOY%	JAN P	--	--	4.90%
02/27/2011 23:50	JN	Retail Trade YoY	JAN	--	--	-2.00%
02/27/2011 23:50	JN	Large Retailers' Sales	JAN	--	--	-1.80%
02/28/2011 04:00	JN	Vehicle Production (YoY)	JAN	--	--	-5.10%
02/28/2011 05:00	JN	Housing Starts (YoY)	JAN	--	--	7.50%
02/28/2011 05:00	JN	Annualized Housing Starts	JAN	--	--	0.861M
02/28/2011 05:00	JN	Construction Orders (YoY)	JAN	--	--	13.10%
02/28/2011 10:00	EC	Euro-Zone CPI - Core (YoY)	JAN	--	--	1.10%
02/28/2011 10:00	EC	Euro-Zone CPI (MoM)	JAN	--	--	0.60%
02/28/2011 10:00	EC	Euro-Zone CPI (YoY)	JAN	--	--	2.40%

Daily Market Report

02/28/2011 13:30	US	Fed's Dudley to Speak on Economic Outlook				
02/28/2011 13:30	US	PCE Core (MoM)	JAN	0.20%	--	0.00%
02/28/2011 13:30	US	Personal Spending	JAN	0.40%	--	0.70%
02/28/2011 13:30	US	PCE Core (YoY)	JAN	--	--	0.70%
02/28/2011 13:30	US	PCE Deflator (YoY)	JAN	--	--	1.20%
02/28/2011 13:30	US	Personal Income	JAN	0.50%	--	0.40%
02/28/2011 13:45	US	Fed's Rosengren Speaks on Panel in Boston				
02/28/2011 14:30	EC	ECB Calls for Bids in 7-Day Main Refinancing				
02/28/2011 14:30	EC	ECB Announces Bond Purchases				
02/28/2011 14:45	US	Chicago Purchasing Manager	FEB	67	--	68.8
02/28/2011 15:00	US	NAPM-Milwaukee	FEB	--	--	57
02/28/2011 15:00	US	Pending Home Sales MoM	JAN	-2.60%	--	2.00%
02/28/2011 15:00	US	Pending Home Sales YoY	JAN	--	--	-3.60%
02/28/2011 15:30	US	Dallas Fed Manf. Activity	FEB	--	--	10.9
02/28/2011 16:00	US	U.S. Fed to Purchase USD5-7 Bln				
02/28/2011 16:30	US	U.S. to Sell 3-Month Bills				
02/28/2011 16:30	US	U.S. to Sell 6-Month Bills				
02/28/2011 23:30	JN	Job-To-Applicant Ratio	JAN	--	--	0.57
02/28/2011 23:30	JN	Overall Hhold Spending (YoY)	JAN	--	--	-3.30%
02/28/2011 23:30	JN	Jobless Rate	JAN	--	--	4.90%
03/01/2011 01:00	CH	PMI Manufacturing	FEB	--	--	52.9
03/01/2011 01:30	JN	Labor Cash Earnings YoY	JAN	--	--	-0.40%
03/01/2011 02:30	CH	HSBC Manufacturing PMI	FEB	--	--	54.5
03/01/2011 05:00	JN	Vehicle Sales (YoY)	FEB	--	--	-22.00%
03/01/2011 08:55	GE	Unemployment Change (000's)	FEB	--	--	-13K
03/01/2011 08:55	GE	Unemployment Rate (s.a)	FEB	--	--	7.40%
03/01/2011 08:55	GE	PMI Manufacturing	FEB F	--	--	62.6
03/01/2011 09:00	EC	PMI Manufacturing	FEB F	--	--	56.9
03/01/2011 09:30	UK	PMI Manufacturing	FEB	--	--	62
03/01/2011 09:30	UK	M4 Ex OFCs 3M Annualised	JAN	--	--	3.00%
03/01/2011 09:30	UK	Net Consumer Credit	JAN	--	--	0.2B
03/01/2011 09:30	UK	M4 Money Supply (MoM)	JAN	--	--	-1.30%
03/01/2011 09:30	UK	M4 Money Supply (YoY)	JAN	--	--	-1.50%
03/01/2011 09:30	UK	Net Lending Sec. on Dwellings	JAN	--	--	-0.3B
03/01/2011 09:30	UK	Mortgage Approvals	JAN	--	--	42.6K
03/01/2011 10:00	EC	Euro-Zone CPI Estimate (YoY)	FEB	--	--	2.40%
03/01/2011 10:00	EC	Euro-Zone Unemployment Rate	JAN	--	--	10.00%
03/01/2011 15:00	US	Construction Spending MoM	JAN	-0.40%	--	-2.50%
03/01/2011 15:00	US	ISM Manufacturing	FEB	60	--	60.8
03/01/2011 15:00	US	ISM Prices Paid	FEB	--	--	81.5
03/01/2011 16:00	US	U.S. Fed to Purchase USD1.5-2.5 Bln				
03/01/2011 16:30	US	U.S. to Sell 4-Week Bills				
03/01/2011 21:30	US	API U.S. Crude Oil Inventories	25-Feb	--	--	--
03/01/2011 21:30	US	API Cushing Crude OK Inventory	25-Feb	--	--	--

Daily Market Report

03/01/2011 21:30	US	API U.S. Distillate Inventory	25-Feb	--	--	--
03/01/2011 21:30	US	API U.S. Gasoline Inventories	25-Feb	--	--	--
03/01/2011 22:00	US	Domestic Vehicle Sales	FEB	9.65M	--	9.59M
03/01/2011 22:00	US	Total Vehicle Sales	FEB	12.60M	--	12.53M
03/01/2011 23:50	JN	Monetary Base (YoY)	FEB	--	--	5.50%
01-04 MAR	UK	Halifax House Price 3Mths/Year	FEB	--	--	-2.40%
01-04 MAR	UK	Halifax House Prices sa (MoM)	FEB	--	--	0.80%
03/02/2011 05:00	US	Fed's Beige Book				
03/02/2011 09:30	UK	PMI Construction	FEB	--	--	53.7
03/02/2011 10:00	EC	Euro-Zone PPI (MoM)	JAN	--	--	0.80%
03/02/2011 10:00	EC	Euro-Zone PPI (YoY)	JAN	--	--	5.30%
03/02/2011 12:00	US	MBA Mortgage Applications	25-Feb	--	--	--
03/02/2011 12:30	US	Challenger Job Cuts YoY	FEB	--	--	-46.10%
03/02/2011 13:15	US	ADP Employment Change	FEB	160K	--	187K
03/02/2011 15:00	US	Bernanke to Give Semiannual Testimony at				
03/02/2011 15:30	US	DOE U.S. Crude Oil Inventories	25-Feb	--	--	--
03/02/2011 15:30	US	DOE Cushing OK Crude Inventory	25-Feb	--	--	--
03/02/2011 15:30	US	DOE U.S. Distillate Inventory	25-Feb	--	--	--
03/02/2011 15:30	US	DOE U.S. Gasoline Inventories	25-Feb	--	--	--
03/02/2011 15:30	US	DOE U.S. Refinery Utilization	25-Feb	--	--	--
03/02/2011 15:30	US	DOE Crude Oil Implied Demand	25-Feb	--	--	--
03/02/2011 15:30	US	DOE Distillate Implied Demand	25-Feb	--	--	--
03/02/2011 15:30	US	DOE Gasoline Implied Demand	25-Feb	--	--	--
03/02/2011 16:00	US	U.S. Fed to Purchase USD5-7 Bln				
03/02/2011 19:00	US	Fed Releases Beige Book Economic Survey				
03/02/2011 23:50	JN	Loans & Discounts Corp YoY	JAN	--	--	-4.30%
03/02/2011 23:50	JN	Capital Spending excl Sftwre	4Q	--	--	4.80%
03/02/2011 23:50	JN	Capital Spending	4Q	--	--	5.00%
03/02/2011 23:50	JN	Japan Buying Foreign Bonds	25-Feb	--	--	--
03/02/2011 23:50	JN	Japan Buying Foreign Stocks	25-Feb	--	--	--
03/02/2011 23:50	JN	Foreign Buying Japan Bonds	25-Feb	--	--	--
03/02/2011 23:50	JN	Foreign Buying Japan Stocks	25-Feb	--	--	--
03/03/2011 00:01	UK	Hometrack Housing Survey (MoM)	FEB	--	--	-0.50%
03/03/2011 00:01	UK	Hometrack Housing Survey (YoY)	FEB	--	--	-2.20%
03/03/2011 01:00	CH	China Non-manufacturing PMI	FEB	--	--	56.4
03/03/2011 02:30	CH	China HSBC Services PMI	FEB	--	--	--
03/03/2011 08:55	GE	PMI Services	FEB F	--	--	59.5
03/03/2011 09:00	EC	PMI Composite	FEB F	--	--	--
03/03/2011 09:00	EC	PMI Services	FEB F	--	--	--
03/03/2011 09:30	UK	PMI Services	FEB	--	--	54.5
03/03/2011 09:30	UK	Official Reserves (Changes)	FEB	--	--	-\$384M
03/03/2011 10:00	EC	Euro-Zone GDP s.a. (QoQ)	4Q P	--	--	0.30%
03/03/2011 10:00	EC	Euro-Zone GDP s.a. (YoY)	4Q P	--	--	2.00%
03/03/2011 10:00	EC	Euro-Zone Household Cons (QoQ)	4Q P	--	--	0.10%

Daily Market Report

03/03/2011 10:00	EC	Euro-Zone Gross Fix Cap (QoQ)	4Q P	--	--	-0.30%
03/03/2011 10:00	EC	Euro-Zone Govt Expend (QoQ)	4Q P	--	--	0.40%
03/03/2011 10:00	EC	Euro-Zone Retail Sales (MoM)	JAN	--	--	-0.60%
03/03/2011 10:00	EC	Euro-Zone Retail Sales (YoY)	JAN	--	--	-0.90%
03/03/2011 12:45	EC	ECB Announces Interest Rates	3-Mar	--	--	1.00%
03/03/2011 13:30	EC	Trichet Speaks at ECB Monthly News				
03/03/2011 13:30	EC	Trichet Speaks at ECB Monthly News				
03/03/2011 13:30	US	Unit Labor Costs	4Q F	-0.60%	--	-0.60%
03/03/2011 13:30	US	Initial Jobless Claims	26-Feb	--	--	--
03/03/2011 13:30	US	Continuing Claims	19-Feb	--	--	--
03/03/2011 13:30	US	Nonfarm Productivity	4Q F	2.60%	--	2.60%
03/03/2011 14:45	US	Bloomberg Consumer Comfort	27-Feb	--	--	--
03/03/2011 15:00	US	ISM Non-Manf. Composite	FEB	59.5	--	59.4
03/03/2011 15:30	US	EIA Natural Gas Storage Change	25-Feb	--	--	--
03/03/2011 16:00	US	U.S. Fed to Purchase USD6-8 Bln				
03/03/2011 16:00	US	Fed's Kocherlakota Speaks in St. Cloud,				
03/03/2011	US	ICSC Chain Store Sales YoY	FEB	--	--	4.80%
03/04/2011 13:30	US	Change in Nonfarm Payrolls	FEB	183K	--	36K
03/04/2011 13:30	US	Change in Private Payrolls	FEB	182K	--	50K
03/04/2011 13:30	US	Change in Manufact. Payrolls	FEB	33K	--	49K
03/04/2011 13:30	US	Unemployment Rate	FEB	9.10%	--	9.00%
03/04/2011 13:30	US	Avg Hourly Earning MOM All Emp	FEB	0.20%	--	0.40%
03/04/2011 13:30	US	Avg Hourly Earning YOY All Emp	FEB	--	--	1.90%
03/04/2011 13:30	US	Avg Weekly Hours All Employees	FEB	34.3	--	34.2
03/04/2011 15:00	US	Factory Orders	JAN	2.20%	--	0.20%
03/04/2011 16:00	US	U.S. Fed to Purchase USD1-2 Bln TIPS				
03/04/2011 18:00	US	Baker Hughes U.S. Rig Count	4-Mar	--	--	--
03/04/2011	UK	New Car Registrations (YoY)	FEB	--	--	-11.50%

Company Name	Company Ticker	Date	Time	Actual	Estimate	Surprise
Oneok Inc	OKE US	2/21/2011	Aft-mkt		0.787	
Medco Health Solutions Inc	MHS US	2/22/2011	Bef-mkt		0.936	
Ameren Corp	AEE US	2/22/2011	Bef-mkt		0.239	
RR Donnelley & Sons Co	RRD US	2/22/2011	Bef-mkt		0.47	
Hormel Foods Corp	HRL US	2/22/2011	Bef-mkt		0.435	
Expeditors International of Washington Inc	EXPD US	2/22/2011	Bef-mkt		0.445	
Home Depot Inc	HD US	2/22/2011	11:00		0.306	
VF Corp	VFC US	2/22/2011	12:00		1.648	
Wal-Mart Stores Inc	WMT US	2/22/2011	12:00		1.311	

Daily Market Report

Medtronic Inc	MDT US	2/22/2011	12:15	0.832
Macy's Inc	M US	2/22/2011	13:00	1.517
Public Service Enterprise Group Inc	PEG US	2/22/2011	13:45	0.615
Chesapeake Energy Corp	CHK US	2/22/2011	Aft-mkt	0.64
RadioShack Corp	RSH US	2/22/2011	Aft-mkt	0.536
Hewlett-Packard Co	HPQ US	2/22/2011	Aft-mkt	1.286
Cabot Oil & Gas Corp	COG US	2/22/2011	Aft-mkt	0.201
Genuine Parts Co	GPC US	2/22/2011		0.704
NRG Energy Inc	NRG US	2/22/2011		0.409
Nicor Inc	GAS US	2/23/2011	Bef-mkt	0.93
Denbury Resources Inc	DNR US	2/23/2011	Bef-mkt	0.198
DIRECTV	DTV US	2/23/2011	Bef-mkt	0.626
Frontier Communications Corp	FTR US	2/23/2011	Bef-mkt	0.101
Quanta Services Inc	PWR US	2/23/2011	Bef-mkt	0.243
Lowe's Cos Inc	LOW US	2/23/2011	12:00	0.177
American Tower Corp	AMT US	2/23/2011	12:00	0.222
TJX Cos Inc	TJX US	2/23/2011	14:30	1.021
Ltd Brands Inc	LTD US	2/23/2011	Aft-mkt	1.25
Flowserve Corp	FLS US	2/23/2011	Aft-mkt	1.964
QEP Resources Inc	QEP US	2/23/2011	Aft-mkt	0.345
Integrus Energy Group Inc	TEG US	2/24/2011	1:00	0.75
priceline.com Inc	PCLN US	2/23/2011		3.087
Fluor Corp	FLR US	2/23/2011		0.75
Washington Post Co/The	WPO US	2/23/2011		8.72
Patterson Cos Inc	PDCO US	2/24/2011	Bef-mkt	0.481
Safeway Inc	SWY US	2/24/2011	Bef-mkt	0.581
Sears Holdings Corp	SHLD US	2/24/2011	Bef-mkt	3.574
Iron Mountain Inc	IRM US	2/24/2011	Bef-mkt	0.295
MetroPCS Communications Inc	PCS US	2/24/2011	Bef-mkt	0.118
Newmont Mining Corp	NEM US	2/24/2011	Bef-mkt	1.13
Mylan Inc/PA	MYL US	2/24/2011	Bef-mkt	0.446
Kohl's Corp	KSS US	2/24/2011	12:00	1.66
El Paso Corp	EP US	2/24/2011	12:30	0.23
CMS Energy Corp	CMS US	2/24/2011	13:30	0.205
Sempra Energy	SRE US	2/24/2011	14:00	0.932
Gap Inc/The	GPS US	2/24/2011	21:00	0.57
American International Group Inc	AIG US	2/24/2011	Aft-mkt	-20.385
First Solar Inc	FSLR US	2/24/2011	Aft-mkt	1.754
Salesforce.com Inc	CRM US	2/24/2011	Aft-mkt	0.266
Autodesk Inc	ADSK US	2/24/2011		0.332
Target Corp	TGT US	2/24/2011		1.393

Daily Market Report

Vornado Realty Trust	VNO US	2/24/2011		1.576
Applied Materials Inc	AMAT US	2/24/2011		0.323
Tenet Healthcare Corp	THC US	2/25/2011	Bef-mkt	0.078
Pepco Holdings Inc	POM US	2/25/2011	Bef-mkt	0.11
Rowan Cos Inc	RDC US	2/25/2011	Bef-mkt	0.288
Interpublic Group of Cos Inc/The	IPG US	2/25/2011	12:00	0.307
JC Penney Co Inc	JCP US	2/25/2011	12:50	1.145
Leucadia National Corp	LUK US	2/25/2011		
Southwestern Energy Co	SWN US	2/25/2011		0.421
Public Storage	PSA US	2/25/2011		1.368
AES Corp/The	AES US	2/25/2011		0.253
Northeast Utilities	NU US	2/25/2011		0.649
Berkshire Hathaway Inc	BRK/A US	2/26/2011		1717.5
Edison International	EIX US	2/28/2011	13:30	0.588
Range Resources Corp	RRC US	2/28/2011	Aft-mkt	0.136
CenterPoint Energy Inc	CNP US	3/1/2011	Bef-mkt	0.292
AutoZone Inc	AZO US	3/1/2011	Bef-mkt	3.059
Titanium Metals Corp	TIE US	3/1/2011		0.127
Staples Inc	SPLS US	3/2/2011		0.403
Costco Wholesale Corp	COST US	3/2/2011		0.784
Kroger Co/The	KR US	3/3/2011		0.445
HJ Heinz Co	HNZ US	3/3/2011		0.799
Big Lots Inc	BIG US	3/3/2011		1.38
Novell Inc	NOVL US	3/3/2011		0.065

Company Name	Company Ticker	Date	Time	Actual	Estimate	Surprise
TNT NV	TNT NA	2/21/2011	Bef-mkt	1.261	1.4	-9.93%
Merck KGaA	MRK GR	2/21/2011	6:00	7.281	6.485	12.27%
Carlsberg A/S	CARLB DC	2/21/2011	6:00	36.302	36.735	-1.18%
Mondi PLC	MNDI LN	2/21/2011	7:00	0.47	0.447	5.15%
John Wood Group PLC	WG/ LN	2/21/2011	7:00	0.41	0.379	8.18%
Hammerson PLC	HMSO LN	2/21/2011	7:00	0.199	0.196	1.53%
Gas Natural SDG SA	GAS SM	2/22/2011	Bef-mkt		1.264	
Fonciere Des Regions	FDR FP	2/22/2011	Bef-mkt		5.477	
Kerry Group PLC	KYG ID	2/22/2011	7:00		1.925	
Wienerberger AG	WIE AV	2/22/2011	7:00		-0.388	

Daily Market Report

Jyske Bank A/S	JYSK DC	2/22/2011		14.362
Dragon Oil PLC	DGO ID	2/22/2011		0.682
Drax Group PLC	DRX LN	2/22/2011		0.614
Croda International PLC	CRDA LN	2/22/2011		0.908
Informa PLC	INF LN	2/22/2011		0.348
MTU Aero Engines Holding AG	MTX GR	2/22/2011	23:00	3.391
Commerzbank AG	CBK GR	2/23/2011	Bef-mkt	1.028
Accor SA	AC FP	2/23/2011	6:00	1.102
Telekom Austria AG	TKA AV	2/23/2011	6:00	0.705
Fresenius Medical Care AG & Co KGaA	FME GR	2/23/2011	6:00	3.257
Natixis	KN FP	2/23/2011	6:00	0.425
Koninklijke DSM NV	DSM NA	2/23/2011	6:15	3.158
Rhodia SA	RHA FP	2/23/2011	6:30	2.537
CNP Assurances	CNP FP	2/23/2011	6:30	1.819
OMV AG	OMV AV	2/23/2011	6:30	3.934
Husqvarna AB	HUSQB SS	2/23/2011	7:00	3.299
Logica PLC	LOG LN	2/23/2011	7:00	0.122
Rexam PLC	REX LN	2/23/2011	7:00	0.322
Swedish Match AB	SWMA SS	2/23/2011	7:00	11.064
Wolters Kluwer NV	WKL NA	2/23/2011	7:00	1.473
Capital Shopping Centres Group PLC	CSCG LN	2/23/2011	7:00	0.149
Ferrovial SA	FER SM	2/23/2011	8:00	0.138
Subsea 7 SA	SUBC NO	2/23/2011	11:00	0.273
Vallourec SA	VK FP	2/23/2011	16:45	3.751
Tenaris SA	TEN IM	2/23/2011	Aft-mkt	0.944
Iberdrola Renovables SA	IBR SM	2/23/2011	Aft-mkt	0.09
CSM	CSM NA	2/23/2011		1.886
Fresenius SE & Co KGaA	FRE GR	2/23/2011		4.043
	MAERSKB			
AP Moller - Maersk A/S	DC	2/23/2011		5734.44
Dexia SA	DEXB BB	2/23/2011		0.419
Henderson Group PLC	HGG LN	2/23/2011		0.097
Travis Perkins PLC	TPK LN	2/23/2011		0.749
Iberdrola SA	IBE SM	2/24/2011	Bef-mkt	0.513
Gestevisión Telecinco SA	TL5 SM	2/24/2011	Bef-mkt	0.567
Repsol YPF SA	REP SM	2/24/2011	Bef-mkt	1.749
EDP Renovaveis SA	EDPR PL	2/24/2011	Bef-mkt	0.098
Portugal Telecom SGPS SA	PTC PL	2/24/2011	Bef-mkt	0.438
Allianz SE	ALV GR	2/24/2011	6:00	11.268
Safran SA	SAF FP	2/24/2011	6:00	1.263
Credit Agricole SA	ACA FP	2/24/2011	6:00	0.913

Daily Market Report

BASF SE	BAS GR	2/24/2011	6:00	5.282
RWE AG	RWE GR	2/24/2011	6:00	6.88
Henkel AG & Co KGaA	HEN3 GR	2/24/2011	6:30	2.8
Aegon NV	AGN NA	2/24/2011	6:30	0.797
RSA Insurance Group PLC	RSA LN	2/24/2011	7:00	0.109
Centrica PLC	CNA LN	2/24/2011	7:00	0.252
Royal Bank of Scotland Group PLC	RBS LN	2/24/2011	7:00	0.005
DSV A/S	DSV DC	2/24/2011	11:00	5.926
Thales SA	HO FP	2/24/2011	16:45	0.713
Telenet Group Holding NV	TNET BB	2/24/2011	16:45	0.901
Valeo SA	FR FP	2/24/2011	Aft-mkt	4.481
Cie de St-Gobain	SGO FP	2/24/2011	Aft-mkt	2.548
ACS Actividades de Construcion y Servicios SA	ACS SM	2/24/2011	Aft-mkt	3.174
Gamesa Corp Tecnologica SA	GAM SM	2/24/2011	Aft-mkt	0.207
Eiffage SA	FGR FP	2/24/2011	Aft-mkt	2.645
EFG Eurobank Ergasias SA	EUROB GA	2/24/2011		-0.014
Piraeus Bank SA	TPEIR GA	2/24/2011		-0.043
Grifols SA	GRF SM	2/24/2011		0.647
Sulzer AG	SUN SW	2/24/2011		7.746
France Telecom SA	FTE FP	2/24/2011		1.88
Indra Sistemas SA	IDR SM	2/24/2011		1.233
Gecina SA	GFC FP	2/24/2011		5.357
Abertis Infraestructuras SA	ABE SM	2/24/2011		0.913
Edenred	EDEN FP	2/24/2011		0.739
Capita Group PLC/The	CPI LN	2/24/2011		0.433
National Express Group PLC	NEX LN	2/24/2011		0.235
Barratt Developments PLC	BDEV LN	2/24/2011		-0.005
Segro PLC	SGRO LN	2/24/2011		0.17
Ashmore Group PLC	ASHM LN	2/24/2011		0.141
British American Tobacco PLC	BATS LN	2/24/2011		1.738
Deutsche Telekom AG	DTE GR	2/25/2011	Bef-mkt	0.774
Telefonica SA	TEF SM	2/25/2011	Bef-mkt	2.011
Endesa SA	ELE SM	2/25/2011	Bef-mkt	2.594
Red Electrica Corp SA	REE SM	2/25/2011	Bef-mkt	2.897
Bekaert SA	BEKB BB	2/25/2011	6:30	6.015
Spectris PLC	SXS LN	2/25/2011	7:00	0.853
Amadeus IT Holding SA	AMS SM	2/25/2011	12:00	0.884
Cie Generale de Geophysique - Veritas	GA FP	2/25/2011	13:30	-0.284
Hellenic Telecommunications Organization SA	HTO GA	2/25/2011		0.599

Daily Market Report

PSP Swiss Property AG	PSPN SW	2/25/2011		3.363
Criteria Caixacorp SA	CRI SM	2/25/2011		0.422
Aeroports de Paris	ADP FP	2/25/2011		2.969
GN Store Nord A/S	GN DC	2/25/2011		9.236
Erste Group Bank AG	EBS AV	2/25/2011		2.436
Telecom Italia SpA	TIT IM	2/25/2011		0.122
Belgacom SA	BELG BB	2/25/2011		2.464
Acerinox SA	ACX SM	2/25/2011		0.543
Banca Popolare di Sondrio SCARL	BPSO IM	2/25/2011		
Mediobanca SpA	MB IM	2/25/2011		
Lloyds Banking Group PLC	LLOY LN	2/25/2011		0.009
William Hill PLC	WMH LN	2/25/2011		0.207
Seadrill Ltd	SDRL NO	2/28/2011	Bef-mkt	2.744
Bayer AG	BAYN GR	2/28/2011	6:30	4.255
Hays PLC	HAS LN	2/28/2011	7:00	
Pearson PLC	PERSON LN	2/28/2011	7:00	0.752
HSBC Holdings PLC	HSBA LN	2/28/2011	8:15	0.789
Luxottica Group SpA	LUX IM	2/28/2011	9:30	0.937
Bureau Veritas SA	BVI FP	2/28/2011	Aft-mkt	2.86
Fomento de Construcciones y Contratas SA	FCC SM	2/28/2011	Aft-mkt	2.322
Tecnicas Reunidas SA	TRE SM	2/28/2011		2.453
Teleperformance	RCF FP	2/28/2011		1.855
Ebro Foods SA	EBRO SM	2/28/2011		0.964
Acciona SA	ANA SM	2/28/2011		2.638
Bunzl PLC	BNZL LN	2/28/2011		0.595
Ultra Electronics Holdings PLC	ULE LN	2/28/2011		1.055
Vivendi SA	VIV FP	3/1/2011	Bef-mkt	2.226
GAM Holding AG	GAM SW	3/1/2011	6:00	0.949
Georg Fischer AG	FI/N SW	3/1/2011	6:00	22.938
Cookson Group PLC	CKSN LN	3/1/2011	7:00	0.571
Bouygues SA	EN FP	3/1/2011	16:45	3.098
Vinci SA	DG FP	3/1/2011	Aft-mkt	3.19
SEB SA	SK FP	3/1/2011	20:00	5.106
Sika AG	SIK SW	3/1/2011		125.536
Casino Guichard Perrachon SA	CO FP	3/1/2011		4.911
MAN SE	MAN GR	3/1/2011		4.379
Kuehne + Nagel International AG	KNIN VX	3/1/2011		5.193
Aixtron SE	AIXA GR	3/1/2011		1.834
Cimpor Cimentos de Portugal SGPS SA	CPR PL	3/1/2011		0.38

Daily Market Report

GKN PLC	GKN LN	3/1/2011		0.17
Provident Financial PLC	PFG LN	3/1/2011		0.768
Fresnillo PLC	FRES LN	3/1/2011		0.68
CRH PLC	CRH ID	3/1/2011		0.687
Meggitt PLC	MGGT LN	3/1/2011		0.261
Rotork PLC	ROR LN	3/1/2011		0.805
United Business Media Ltd	UBM LN	3/1/2011		0.493
Holcim Ltd	HOLN VX	3/2/2011	6:00	3.475
Swiss Life Holding AG	SLHN VX	3/2/2011	6:00	15.783
Adidas AG	ADS GR	3/2/2011	6:30	2.724
Persimmon PLC	PSN LN	3/2/2011	7:00	0.232
Admiral Group PLC	ADM LN	3/2/2011	7:00	0.701
Serco Group PLC	SRP LN	3/2/2011	7:00	0.337
Finmeccanica SpA	FNC IM	3/2/2011		1.129
UCB SA	UCB BB	3/2/2011		1.594
Delta Lloyd NV	DL NA	3/2/2011		4.018
Cie Generale d'Optique Essilor International SA	EI FP	3/2/2011		2.205
Verbund AG	VER AV	3/2/2011		1.42
Parmalat SpA	PLT IM	3/2/2011		0.108
Arkema SA	AKE FP	3/2/2011		5.264
International Power PLC	IPR LN	3/2/2011		0.281
Jardine Lloyd Thompson Group PLC	JLT LN	3/2/2011		0.41
Carillion PLC	CLLN LN	3/2/2011		0.392
Amlin PLC	AML LN	3/2/2011		0.404
Standard Chartered PLC	STAN LN	3/2/2011		1.963
ITV PLC	ITV LN	3/2/2011		0.054
Adecco SA	ADEN VX	3/3/2011	6:00	2.285
Beiersdorf AG	BEI GR	3/3/2011	7:00	1.773
Cobham PLC	COB LN	3/3/2011	7:00	0.19
Continental AG	CON GR	3/3/2011	7:45	4.128
EDP - Energias de Portugal SA	EDP PL	3/3/2011	Aft-mkt	0.288
GDF Suez	GSZ FP	3/3/2011		1.957
Wereldhave NV	WHA NA	3/3/2011		5.246
Ackermans & van Haaren NV	ACKB BB	3/3/2011		4.901
Koninklijke Ahold NV	AH NA	3/3/2011		0.826
Anheuser-Busch InBev NV	ABI BB	3/3/2011		3.158
ProSiebenSat.1 Media AG	PSM GR	3/3/2011		1.752
Prysmian SpA	PRY IM	3/3/2011		0.905
Pargesa Holding SA	PARG SW	3/3/2011		5.565
Groupe Bruxelles Lambert SA	GBLB BB	3/3/2011		3.85

Daily Market Report

Carrefour SA	CA FP	3/3/2011	2.216
AMEC PLC	AMEC LN	3/3/2011	0.584
Old Mutual PLC	OML LN	3/3/2011	0.159
Aviva PLC	AV/ LN	3/3/2011	0.606
Taylor Wimpey PLC	TW/ LN	3/3/2011	0.012
IMI PLC	IMI LN	3/3/2011	0.645
SBM Offshore NV	SBMO NA	3/4/2011 6:30	1.317
Groupe Eurotunnel SA	GET FP	3/4/2011	-0.086
Hermes International	RMS FP	3/4/2011	4.041
Veolia Environnement SA	VIE FP	3/4/2011	1.17
WPP PLC	WPP LN	3/4/2011	0.567
Balfour Beatty PLC	BBY LN	3/4/2011	0.341

Disclaimer. This report was prepared and provided for information purposes only under the condition it will not form the sole basis for any investment decision. It does not constitute an offer and should not be considered as an offer, or solicitation of an offer, to buy or sell any securities. The information and opinions contained in this report have been received from sources believed to be reliable. While every reasonable effort has been made to obtain accurate information and verify it, IC RUSS-INVEST or its affiliates makes no warranty, express or implied, as to the accuracy, completeness or correctness of the information and opinions contained herein. All such information, opinions and forecasts are subject to further change without notice. The forward-looking statements in this report are subject to risks, uncertainties and other factors that could cause actual results to differ materially from those stated in such statements. Neither we nor any of our respective agents, employees or advisors intend or have any duty or obligation to supply, amend, update or revise any of the forward-looking statements contained in this report. IC RUSS-INVEST, its directors and employees may have a position in any of the securities mentioned in this report. The report cannot be used on the territory of the USA, Canada, Great Britain, Japan, neither it can be a subject of national regulation of the states mentioned.

INVESTMENT COMPANY IC RUSS-INVEST

www.russ-invest.com

Moscow

Telephone: +7(495) 363-93-80
 Fax: +7(495) 363-93-90
 E-mail: mail@russ-invest.com
 Mailing address: 5-3/12 Nashchiokinsky
 Pereulok, bldg. 4, 119019 Moscow

St-Petersburg

Telephone: +7(812) 337-55-37
 Fax: +7(812) 337-55-37
 E-mail: spb@russ-invest.com
 Mailing address: 52, Fontanky
 Embankment, 190002 St-Petersburg

Samara

Telephone: +7 (846) 262-75-52
 Fax: +7 (846) 262-75-52
 E-mail: sam@russ-invest.com
 Mailing address: 443067, Самара, ул.
 агарина, 95

© 2007 | OJSC «IC RUSS-INVEST»

Licenses of FCFM №077-08757-000100 и №077-08755-001000

Licenses of FCFM №177-06310-100000 и №177-06312-010000

Licenses of FCFM №906

February 25, 2011