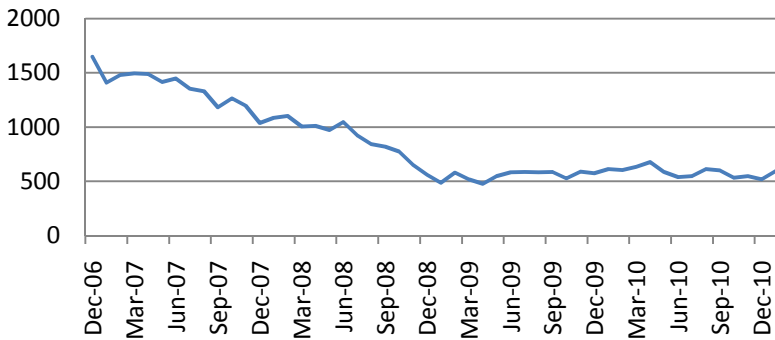
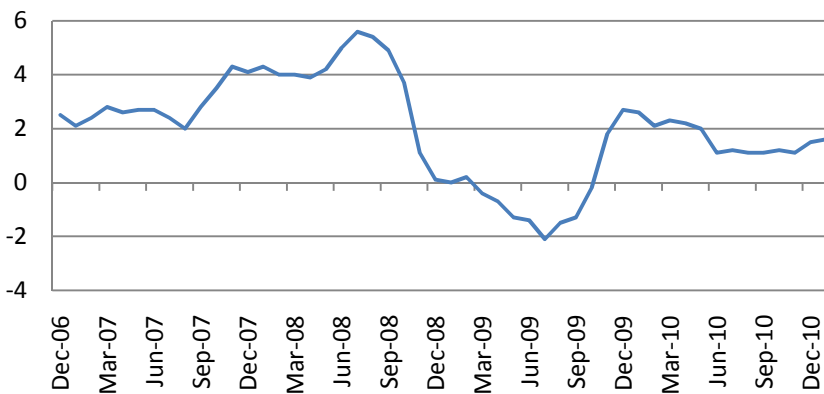


February 18, 2011

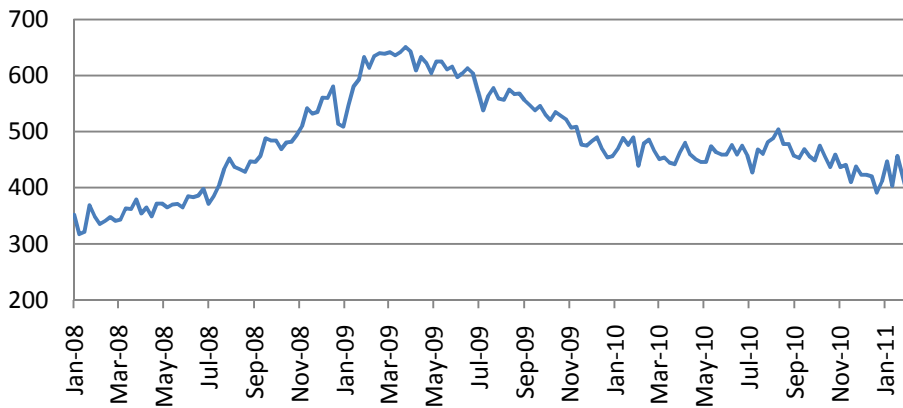
New Home Sales



US PPI (y/y) – 0.4% m/m (consensus – 0.3%)



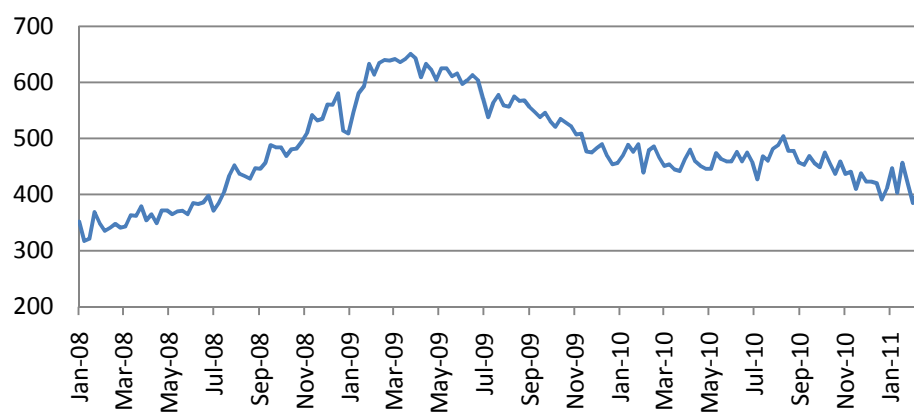
Initial jobless claims – up to 410 000 (consensus – 400 000)



Macro Indicators		
CDS HY 5Y	388.12	-0.19%
ITX Crossover	282.58	-2.58%
CDS Japan 5Y	79.92	+2.75%
CDS EM 5Y	112.22	+0.08%
CDS Russia 5Y	146.39	-0.34%
US Tsys 10Y	3.74%	+0.11%
US Tsys 5Y	2.45%	+0.06%
Brazil 10Y	4.44%	+0.19%
Germany 10Y	3.09%	+0.06%
EUR/USD	1.3543	-0.03%
USD/JPY	83.54	+0.19%
EUR/GBP	0.8417	+0.20%
Oil Brent	103.84	+0.06%
Gold	1380	+0.36%
Copper	9842	-1.69%
Nickel	28542	-0.61%
S&P 500	1332.5	-0.04%
Russell 2000	828.37	+1.02%
Bovespa	67570.76	+1.85%
Topix	976	+0.21%
Shanghai Comp	2,926.96	+0.10%
S&P/ASX 300	4,938.40	+0.17%
Sensex 30	18,508.52	+1.13%
Bovespa	67,570.76	+1.85%
DJ Euro Stoxx	3072	+0.13%
CAC Futures	4157	+0.13%
DAX Futures	7426.5	-0.03%
CBOE Put/Call	0.56	+1.82%
CBOE	832.95	+0.05%
VIX	16.72	+2.14%
VSTOXX	19.3917	+1.06%

Factor Assessment		
Factor	Grade	Prev. Grade
US credit risks	3	3
Fed Activity	5	4
Corporate news	8	8
Economic statistics	8	8
Inflation concerns	4	4
China tightening	4	4
European Sovereign Risks	5	5

*As of 7:00 GMT, Bloomberg

Philadelphia Manufacturing Index – up to 36 p. (consensus – 24).**Earnings reports (sectoral results)**

Sector	Reported	Total	Growth	Surprise	Pos Surp	Neg Surp
All Securities	391	500	34.57%	5.64%	282	108
Oil & Gas	29	38	43.18%	8.52%	23	6
Basic Materials	24	26	55.41%	31.44%	17	7
Industrials	62	73	22.40%	6.12%	43	18
Consumer Goods	43	54	-2.29%	-1.33%	31	12
Health Care	40	45	7.11%	3.64%	32	8
Consumer Services	40	74	17.18%	5.82%	31	9
Telecommunications	5	10	-2.08%	1.03%	2	3
Utilities	19	35	-0.29%	1.02%	7	12
Financials	78	83	238.80%	3.31%	55	23
Technology	51	62	24.36%	8.91%	41	10

Daily Market Report

Most active stocks in Europe*

Stock	Volume	Change
CHARTER INTERNAT	737	-6.41%
AIXTRON SE	30.715	-4.02%
SES	18.2	-3.19%
ENAGAS	15.71	-3.08%
JERONIMO MARTINS	11.95	-2.77%
BUZZI UNICEM SPA	10.09	-2.51%
STOREBRAND ASA	47.38	-2.27%
SACYR VALLEHERM	7.692	-2.22%
LAND SECURITIES	748	+1.70%
CLARIANT AG-REG	15.37	+2.47%
NORTHUMB WATER	324	+2.82%
LAFARGE SA	47.415	+3.09%
Q-CELLS SE	3.241	+3.35%
SWISS REINSURANC	60.15	+3.35%
MARFIN INVESTMEN	0.98	+4.26%

S&P 500 Sub-index	Last	Change
CONS	314.40	+0.13%
DISCRET		
CONS	306.29	+0.72%
STAPLES		
ENERGY	568.00	+0.82%
FINANCIALS	230.68	-0.10%
HEALTH CARE	377.87	+0.32%
INDUSTRIALS	328.43	+0.19%
INFO TECH	438.64	+0.16%
MATERIALS	252.85	+0.85%
TELECOM	127.07	+0.26%
SERV		
UTILITIES	161.30	+0.31%

DJIA Eurostoxx	Last	Change
SX3P	349.53	+0.95%
SX4P	573.5	+1.70%
SX6P	336.04	+0.50%
SX7P	228.03	+4.10%
SX86P	122.2	+2.92%
SX8P	237.7	+0.15%
SXAP	354.26	-4.07%
SXDP	393.18	+1.26%
SXEP	359.76	+1.33%
SXFP	285.8	-0.06%
SXIP	181.73	+2.24%
SXKP	288.41	+0.68%
SXMP	190.84	-0.82%
SXNP	337	-0.18%
SXOP	293.86	+0.44%
SXPP	629.65	-2.36%
SXQP	419.04	+0.51%
SXRP	270.98	+1.28%
SXTP	136.6	+1.82%
SX3P	349.53	+0.95%

Technical view

S&P 500 Index, daily



The S&P 500 has final target of the current formation around 1376. However, as soon the 5th of V is finished, correction to 1230 is likely to come.

A pessimistic midterm target seems to be around 1000, after the pattern is completed and (C) starts.

Current support levels are at 1230, 1180, 1130, 1092, 1041, 1010, 980, 950, 870.

Resistance level: 1376.

Daily Market Report

Dow Jones Stoxx 600 Europe Index, daily



The index has broken wedge upper line as a resistance level. Final target of the current wave may be around 297.

Pessimistic scenario will be activated if the support at 280 is broken (this will point 258, 243, 210 levels as the final targets of the downward leg (C)).

Important support levels: 275.8, 263, 256, 243, 238, 217.

Important resistance levels – 280, 286.

Daily Market Report

EURUSD, daily



EURUSD current pattern is likely a zigzag in a wide triangle, which has its lower bound around 1.17. After short consolidation, another leg down with a support around 1.26 should unwind in the coming days.

However, if the upper descending line at 1.37 is broken up, the probability of testing another major resistance at 1.43 will increase.

Daily Market Report

Macroeconomic calendar*						
Время, GMT	Страна	Данные	Период	Прогноз	Значение	Прошл.
11-15 FEB	CH	New Yuan Loans	JAN	1200.0B	--	480.7B
11-15 FEB	CH	Money Supply - M0 (YoY)	JAN	--	--	16.70%
11-15 FEB	CH	Money Supply - M1 (YoY)	JAN	19.60%	--	21.20%
11-15 FEB	CH	Money Supply - M2 (YoY)	JAN	19.00%	--	19.70%
02/13/2011 23:50	JN	GDP Deflator YoY	4Q P	-1.50%	--	-2.40%
02/13/2011 23:50	JN	Nominal GDP (QoQ)	4Q P	-0.50%	--	0.60%
02/13/2011 23:50	JN	GDP Annualized	4Q P	-2.00%	--	4.50%
02/13/2011 23:50	JN	Gross Domestic Product (QoQ)	4Q P	-0.50%	--	1.10%
02/14/2011 02:00	CH	Trade Balance (USD)	JAN	\$11.30B	--	\$13.10B
02/14/2011 02:00	CH	Exports YoY%	JAN	22.50%	--	17.90%
02/14/2011 02:00	CH	Imports YoY%	JAN	27.00%	--	25.60%
02/14/2011 10:00	EC	Euro-Zone Ind. Prod. wda (YoY)	DEC	8.00%	--	7.40%
02/14/2011 10:00	EC	Euro-Zone Ind. Prod. sa (MoM)	DEC	-0.20%	--	1.20%
02/14/2011 14:30	EC	ECB Calls for Bids in 7-Day Main Refinancing				
02/14/2011 14:30	EC	ECB Announces Bond Purchases				
02/14/2011 15:00	US	NY Fed President Dudley Speaks at Regional				
02/14/2011 16:30	US	U.S. to Sell USD32 Bln 3-Month Bills				
02/14/2011 16:30	US	U.S. to Sell USD30 Bln 6-Month Bills				
14-18 FEB	CH	China Property Prices	JAN	5.5	--	6.4
14-18 FEB	US	Mortgage Delinquencies	4Q	--	--	--
14-18 FEB	US	MBA Mortgage Foreclosures	4Q	--	--	--
02/15/2011 02:00	CH	Producer Price Index (YoY)	JAN	6.20%	--	5.90%
02/15/2011 02:00	CH	Consumer Price Index (YoY)	JAN	5.40%	--	4.60%
02/15/2011 04:00	JN	Tokyo Condominium Sales (YoY)	JAN	--	--	40.80%
02/15/2011 04:30	JN	Industrial Production (MoM)	DEC F	--	--	3.10%
02/15/2011 04:30	JN	Industrial Production YOY%	DEC F	--	--	4.60%
02/15/2011 04:30	JN	Capacity Utilization (MoM)	DEC F	--	--	1.60%
02/15/2011 06:00	JN	Machine Tool Orders (YoY)	JAN F	--	--	89.40%
02/15/2011 07:00	GE	GDP nsa (YoY)	4Q P	4.10%	--	3.90%
02/15/2011 07:00	GE	GDP s.a. (QOQ)	4Q P	0.50%	--	0.70%
02/15/2011 07:00	GE	GDP wda (YoY)	4Q P	4.10%	--	3.90%
02/15/2011 09:30	UK	DCLG UK House Prices (YoY)	DEC	--	--	4.00%
02/15/2011 09:30	UK	CPI (MoM)	JAN	0.20%	--	1.00%
02/15/2011 09:30	UK	CPI (YoY)	JAN	4.10%	--	3.70%
02/15/2011 09:30	UK	Core CPI YOY	JAN	3.00%	--	2.90%
02/15/2011 09:30	UK	Retail Price Index	JAN	229.3	--	228.4
02/15/2011 09:30	UK	RPI (MoM)	JAN	0.40%	--	0.70%
02/15/2011 09:30	UK	RPI (YoY)	JAN	5.20%	--	4.80%
02/15/2011 09:30	UK	RPI Ex Mort Int.Payments (YoY)	JAN	5.10%	--	4.70%

Daily Market Report

02/15/2011 10:00	EC	Euro-Zone GDP s.a. (QoQ)	4Q A	0.40%	--	0.30%
02/15/2011 10:00	EC	Euro-Zone GDP s.a. (YoY)	4Q A	2.10%	--	1.90%
02/15/2011 10:00	GE	Zew Survey (Current Situation)	FEB	83	--	82.8
02/15/2011 10:00	EC	ZEW Survey (Econ. Sentiment)	FEB	--	--	25.4
02/15/2011 10:00	GE	ZEW Survey (Econ. Sentiment)	FEB	20	--	15.4
02/15/2011 10:00	EC	Euro-Zone Trade Balance sa	DEC	--	--	-1.9B
02/15/2011 10:00	EC	Euro-Zone Trade Balance	DEC	1.0B	--	-0.4B
02/15/2011 10:15	EC	ECB Announces Allotment in 7-Day Main				
02/15/2011 12:00	EC	ECB Announces Allotment in 7-Day Term				
02/15/2011 13:30	US	Empire Manufacturing	FEB	15	--	11.92
02/15/2011 13:30	US	Import Price Index (MoM)	JAN	0.80%	--	1.10%
02/15/2011 13:30	US	Import Price Index (YoY)	JAN	4.40%	--	4.80%
02/15/2011 13:30	US	Advance Retail Sales	JAN	0.50%	--	0.60%
02/15/2011 13:30	US	Retail Sales Less Autos	JAN	0.50%	--	0.50%
02/15/2011 13:30	US	Retail Sales Ex Auto & Gas	JAN	0.50%	--	0.40%
02/15/2011 14:00	US	Total Net TIC Flows	DEC	\$40.0B	--	\$39.0B
02/15/2011 14:00	US	Net Long-term TIC Flows	DEC	--	--	\$85.1B
02/15/2011 15:00	US	Fed's Pinalto Speaks on Economic				
02/15/2011 15:00	US	Business Inventories	DEC	0.70%	--	0.20%
02/15/2011 15:00	US	NAHB Housing Market Index	FEB	16	--	16
02/15/2011 16:30	US	U.S. to Sell 4-Week Bills				
02/15/2011 21:30	US	API U.S. Crude Oil Inventories	11-Feb	--	--	-558K
02/15/2011 21:30	US	API Cushing Crude OK Inventory	11-Feb	--	--	-927K
02/15/2011 21:30	US	API U.S. Distillate Inventory	11-Feb	--	--	-538K
02/15/2011 21:30	US	API U.S. Gasoline Inventories	11-Feb	--	--	3212K
02/15/2011 22:00	US	ABC Consumer Confidence	13-Feb	--	--	-46
02/15/2011 23:50	JN	Tertiary Industry Index (MoM)	DEC	-0.60%	--	0.60%
02/15/2011	JN	BOJ Target Rate	15-Feb	0.10%	--	0.10%
02/16/2011 00:01	UK	Nationwide Consumer Confidence	JAN	49	--	53
02/16/2011 07:00	EC	EU 25 New Car Registrations	JAN	--	--	-3.20%
02/16/2011 08:15	EC	ECB Calls for Bids in 7-Day Dollar Tender				
02/16/2011 08:15	EC	ECB's Mersch Speaks At Event in				
02/16/2011 09:30	UK	Claimant Count Rate	JAN	4.50%	--	4.50%
02/16/2011 09:30	UK	Jobless Claims Change	JAN	-2.0K	--	-4.1K
02/16/2011 09:30	UK	Average Weekly Earnings 3M/YoY	DEC	2.00%	--	2.10%
02/16/2011 09:30	UK	Weekly Earnings exBonus 3M/YoY	DEC	2.30%	--	2.30%
02/16/2011 09:30	UK	ILO Unemployment Rate (3mths)	DEC	7.90%	--	7.90%
02/16/2011 10:00	EC	ECB Announces Allotment in 7-Day Dollar				
02/16/2011 10:30	UK	Bank of England Inflation Report				
02/16/2011 12:00	US	MBA Mortgage Applications	11-Feb	--	--	-5.50%
02/16/2011 13:30	US	Housing Starts	JAN	537K	--	529K
02/16/2011 13:30	US	Building Permits	JAN	570K	--	635K
02/16/2011 13:30	US	Housing Starts MOM%	JAN	1.40%	--	-4.30%
02/16/2011 13:30	US	Building Permits MOM%	JAN	-9.10%	--	16.70%

Daily Market Report

02/16/2011 13:30	US	Producer Price Index (MoM)	JAN	0.80%	--	1.10%
02/16/2011 13:30	US	PPI Ex Food & Energy (MoM)	JAN	0.20%	--	0.20%
02/16/2011 13:30	US	Producer Price Index (YoY)	JAN	3.50%	--	4.00%
02/16/2011 13:30	US	PPI Ex Food & Energy (YoY)	JAN	1.20%	--	1.30%
02/16/2011 14:15	US	Industrial Production	JAN	0.60%	--	0.80%
02/16/2011 14:15	US	Capacity Utilization	JAN	76.40%	--	76.00%
02/16/2011 15:30	US	DOE U.S. Crude Oil Inventories	11-Feb	--	--	1898K
02/16/2011 15:30	US	DOE Cushing OK Crude Inventory	11-Feb	--	--	-927K
02/16/2011 15:30	US	DOE U.S. Distillate Inventory	11-Feb	--	--	288K
02/16/2011 15:30	US	DOE U.S. Gasoline Inventories	11-Feb	--	--	4663K
02/16/2011 15:30	US	DOE U.S. Refinery Utilization	11-Feb	--	--	0.20%
02/16/2011 15:30	US	DOE Crude Oil Implied Demand	11-Feb	--	--	14235
02/16/2011 15:30	US	DOE Distillate Implied Demand	11-Feb	--	--	4516.9
02/16/2011 15:30	US	DOE Gasoline Implied Demand	11-Feb	--	--	8722.6
02/16/2011 19:00	US	Fed Releases Minutes of Jan. 25-26 FOMC				
02/16/2011 19:00	US	Minutes of FOMC Meeting				
02/16/2011 23:50	JN	Japan Buying Foreign Bonds	11-Feb	--	--	¥388.0B
02/16/2011 23:50	JN	Japan Buying Foreign Stocks	11-Feb	--	--	-¥8.0B
02/16/2011 23:50	JN	Foreign Buying Japan Bonds	11-Feb	--	--	¥224.2B
02/16/2011 23:50	JN	Foreign Buying Japan Stocks	11-Feb	--	--	¥197.6B
16-18 FEB	JN	Nationwide Dept. Sales (YoY)	JAN	--	--	--
16-18 FEB	JN	Tokyo Dept. Store Sales (YoY)	JAN	--	--	--
02/17/2011 02:00	CH	Actual FDI (YoY)	JAN	17.20%	--	15.60%
02/17/2011 05:00	JN	Coincident Index CI	DEC F	--	--	103.1
02/17/2011 05:00	JN	Leading Index CI	DEC F	--	--	101.4
02/17/2011 09:00	EC	Euro-Zone Current Account nsa	DEC	--	--	-6.0B
02/17/2011 09:00	EC	ECB Euro-Zone Current Account SA	DEC	--	--	-11.2B
02/17/2011 10:00	EC	Construction Output SA MoM	DEC	--	--	-0.90%
02/17/2011 10:00	EC	Construction Output WDA YoY	DEC	--	--	-6.80%
02/17/2011 11:00	UK	CBI Trends Total Orders	FEB	-6	--	-16
02/17/2011 13:30	US	Consumer Price Index (MoM)	JAN	0.40%	--	0.50%
02/17/2011 13:30	US	CPI Ex Food & Energy (MoM)	JAN	0.10%	--	0.10%
02/17/2011 13:30	US	Consumer Price Index (YoY)	JAN	1.60%	--	1.50%
02/17/2011 13:30	US	CPI Ex Food & Energy (YoY)	JAN	1.00%	--	0.80%
02/17/2011 13:30	US	CPI Core Index SA	JAN	--	--	222.187
02/17/2011 13:30	US	Consumer Price Index NSA	JAN	--	--	219.179
02/17/2011 13:30	US	Initial Jobless Claims	12-Feb	400K	--	383K
02/17/2011 13:30	US	Continuing Claims	5-Feb	--	--	3888K
02/17/2011 15:00	US	Bernanke, Bair, Schapiro Testify on Dodd-				
02/17/2011 15:00	EC	Euro-Zone Consumer Confidence	FEB A	-11	--	-11.2
02/17/2011 15:00	US	Leading Indicators	JAN	0.30%	--	1.00%
02/17/2011 15:00	US	Philadelphia Fed.	FEB	20.9	--	19.3
02/17/2011 15:30	US	EIA Natural Gas Storage Change	11-Feb	--	--	-209
02/17/2011 17:30	US	Fed's Evans Speaks on Economy in				

Daily Market Report

02/17/2011 18:00	US	U.S. to Sell USD9 Bln 30-Year TIPS				
02/17/2011 21:00	US	RPX Composite 28dy YoY	DEC	--	--	-2.18%
02/17/2011 21:00	US	RPX Composite 28dy Index	31-Dec	--	--	189.44
02/18/2011 02:00	CH	Conference Board China December Leading				
02/18/2011 07:00	GE	Producer Prices (MoM)	JAN	0.60%	--	0.70%
02/18/2011 07:00	GE	Producer Prices (YoY)	JAN	5.10%	--	5.30%
02/18/2011 09:30	UK	Retail Sales Ex Auto Fuel(MoM)	JAN	0.10%	--	-0.30%
02/18/2011 09:30	UK	Retail Sales Ex Auto Fuel(YoY)	JAN	4.10%	--	1.00%
02/18/2011 09:30	UK	Retail Sales w/Auto Fuel (MoM)	JAN	0.60%	--	-0.80%
02/18/2011 09:30	UK	Retail Sales w/Auto Fuel (YoY)	JAN	4.00%	--	0.00%
02/18/2011 13:00	US	Bernanke Speaks on Global Imbalances in				
02/18/2011 18:00	US	Baker Hughes U.S. Rig Count	18-Feb	--	--	--
02/21/2011 00:01	UK	Rightmove House Prices (MoM)	FEB	--	--	0.30%
02/21/2011 00:01	UK	Rightmove House Prices (YoY)	FEB	--	--	0.40%
02/21/2011 04:30	JN	All Industry Activity Index (MoM)	DEC	--	--	-0.10%
02/21/2011 08:30	GE	PMI Manufacturing	FEB A	--	--	60.5
02/21/2011 08:30	GE	PMI Services	FEB A	--	--	60.3
02/21/2011 09:00	EC	PMI Composite	FEB A	--	--	57
02/21/2011 09:00	GE	IFO - Business Climate	FEB	--	--	110.3
02/21/2011 09:00	GE	IFO - Current Assessment	FEB	--	--	112.8
02/21/2011 09:00	GE	IFO - Expectations	FEB	--	--	107.8
02/21/2011 09:00	EC	PMI Manufacturing	FEB A	--	--	57.3
02/21/2011 09:00	EC	PMI Services	FEB A	--	--	55.9
02/21/2011 14:30	EC	ECB Calls for Bids in 7-Day Main Refinancing				
02/21/2011 14:30	EC	ECB Announces Bond Purchases				
02/21/2011 16:00	IT	Mario Draghi Speaks at Conference in				
02/22/2011 09:30	UK	Public Finances (PSNCR)	JAN	--	--	25.5B
02/22/2011 09:30	UK	PSNB ex Interventions	JAN	--	--	16.8B
02/22/2011 09:30	UK	Public Sector Net Borrowing	JAN	--	--	15.3B
02/22/2011 10:15	EC	ECB Announces Allotment in 7-Day Main				
02/22/2011 12:00	EC	ECB Announces Allotment in 7-Day Term				
02/22/2011 14:00	US	S&P/CaseShiller Home Price Ind	DEC	--	--	143.85
02/22/2011 14:00	US	S&P/CS 20 City MoM% SA	DEC	--	--	-0.54%
02/22/2011 14:00	US	S&P/CS Composite-20 YoY	DEC	--	--	-1.59%
02/22/2011 14:00	US	S&P/Case-Shiller US HPI	4Q	--	--	135.48
02/22/2011 14:00	US	S&P/Case-Shiller US HPI YOY%	4Q	--	--	-1.51%
02/22/2011 14:30	EC	ECB Calls for Bids in 3-Month Tender				
02/22/2011 15:00	US	Consumer Confidence	FEB	61.5	--	60.6
02/22/2011 15:00	US	Richmond Fed Manufact. Index	FEB	--	--	18
02/22/2011 16:30	US	U.S. to Sell 3-Month Bills				
02/22/2011 16:30	US	U.S. to Sell 6-Month Bills				
02/22/2011 18:00	US	U.S. to Sell 2-Year Notes				
02/22/2011 18:00	US	Fed's Kocherlakota Speaks in Pierre, South				
02/22/2011 22:00	US	ABC Consumer Confidence	20-Feb	--	--	--

Daily Market Report

02/22/2011 23:50	JN	Corp Service Price Index (YoY)	JAN	--	--	-1.30%
02/22/2011 23:50	JN	Merchnds Trade Balance Total	JAN	--	--	¥727.7B
02/22/2011 23:50	JN	Adjusted Merchnds Trade Bal.	JAN	--	--	¥707.3B
02/22/2011 23:50	JN	Merchnds Trade Exports YoY	JAN	--	--	13
02/22/2011 23:50	JN	Merchnds Trade Imports YoY	JAN	--	--	10.6
02/23/2011 01:00	JN	Small Business Confidence	FEB	--	--	45.8
02/23/2011 08:15	EC	ECB Calls for Bids in 7-Day Dollar Tender				
02/23/2011 09:30	UK	Bank of England Minutes				
02/23/2011 09:30	UK	BBA Loans for House Purchase	JAN	--	--	28726
02/23/2011 10:00	EC	ECB Announces Allotment in 7-Day Dollar				
02/23/2011 10:00	EC	Industrial New Orders NSA (YoY)	DEC	--	--	19.90%
02/23/2011 10:00	EC	Industrial New Orders SA (MoM)	DEC	--	--	2.10%
02/23/2011 10:15	EC	ECB Announces Allotment in 3-Month				
02/23/2011 12:00	US	MBA Mortgage Applications	18-Feb	--	--	--
02/23/2011 15:00	US	Existing Home Sales	JAN	--	--	5.28M
02/23/2011 15:00	US	Existing Home Sales MoM	JAN	--	--	12.30%
02/23/2011 16:30	US	U.S. to Sell 4-Week Bills				
02/23/2011 17:00	EC	ECB's Trichet, Quaden Speak in Liege,				
02/23/2011 17:15	EC	ECB's Axel Weber Speaks At Zurich				
02/23/2011 17:30	US	Kansas City Fed's Hoenig Speaks on				
02/23/2011 18:00	US	U.S. to Sell 5-Year Notes				
02/23/2011 18:30	US	Fed's Plosser Speaks on Economic Outlook				
02/23/2011 21:30	US	API U.S. Crude Oil Inventories	18-Feb	--	--	--
02/23/2011 21:30	US	API Cushing Crude OK Inventory	18-Feb	--	--	--
02/23/2011 21:30	US	API U.S. Distillate Inventory	18-Feb	--	--	--
02/23/2011 21:30	US	API U.S. Gasoline Inventories	18-Feb	--	--	--
02/23/2011 23:50	JN	Japan Buying Foreign Bonds	18-Feb	--	--	--
02/23/2011 23:50	JN	Japan Buying Foreign Stocks	18-Feb	--	--	--
02/23/2011 23:50	JN	Foreign Buying Japan Bonds	18-Feb	--	--	--
02/23/2011 23:50	JN	Foreign Buying Japan Stocks	18-Feb	--	--	--
02/24/2011 07:00	GE	GfK Consumer Confidence Survey	MAR	--	--	5.7
02/24/2011 07:00	GE	GDP nsa (YoY)	4Q F	--	--	--
02/24/2011 07:00	GE	Domestic Demand	4Q F	--	--	0.40%
02/24/2011 07:00	GE	Exports	4Q F	--	--	2.30%
02/24/2011 07:00	GE	Capital Investment	4Q F	--	--	1.30%
02/24/2011 07:00	GE	Government Spending	4Q F	--	--	1.10%
02/24/2011 07:00	GE	Construction Investment	4Q F	--	--	-0.40%
02/24/2011 07:00	GE	Imports	4Q F	--	--	1.90%
02/24/2011 07:00	GE	Private Consumption	4Q F	--	--	0.40%
02/24/2011 07:00	GE	GDP s.a. (QOQ)	4Q F	--	--	--
02/24/2011 07:00	GE	GDP wda (YoY)	4Q F	--	--	--
02/24/2011 10:00	EC	Business Climate Indicator	FEB	--	--	1.58
02/24/2011 10:00	EC	Euro-Zone Consumer Confidence	FEB F	--	--	-11.2
02/24/2011 10:00	EC	Euro-Zone Economic Confidence	FEB	--	--	106.5

Daily Market Report

02/24/2011 10:00	EC	Euro-Zone Indust. Confidence	FEB	--	--	6
02/24/2011 10:00	EC	Euro-zone Services Confidence	FEB	--	--	9.2
02/24/2011 11:00	UK	CBI Reported Sales	FEB	--	--	37
02/24/2011 13:30	US	Fed's Bullard Speaks in Bowling Green,				
02/24/2011 13:30	US	Chicago Fed Nat Activity Index	JAN	--	--	0.03
02/24/2011 13:30	US	Cap Goods Orders Nondef Ex Air	JAN	--	--	1.40%
02/24/2011 13:30	US	Cap Goods Ship Nondef Ex Air	JAN	--	--	1.70%
02/24/2011 13:30	US	Durable Goods Orders	JAN	--	--	-2.50%
02/24/2011 13:30	US	Durables Ex Transportation	JAN	--	--	0.50%
02/24/2011 13:30	US	Initial Jobless Claims	19-Feb	--	--	--
02/24/2011 13:30	US	Continuing Claims	12-Feb	--	--	--
02/24/2011 15:00	US	House Price Purchase Index QoQ	4Q	--	--	-1.60%
02/24/2011 15:00	US	House Price Index MoM	DEC	--	--	0.00%
02/24/2011 15:00	US	New Home Sales MoM	JAN	--	--	17.50%
02/24/2011 15:00	US	New Home Sales	JAN	--	--	329K
02/24/2011 15:30	US	DOE U.S. Crude Oil Inventories	18-Feb	--	--	--
02/24/2011 15:30	US	DOE Cushing OK Crude Inventory	18-Feb	--	--	--
02/24/2011 15:30	US	DOE U.S. Distillate Inventory	18-Feb	--	--	--
02/24/2011 15:30	US	DOE U.S. Gasoline Inventories	18-Feb	--	--	--
02/24/2011 15:30	US	DOE U.S. Refinery Utilization	18-Feb	--	--	--
02/24/2011 15:30	US	EIA Natural Gas Storage Change	18-Feb	--	--	--
02/24/2011 15:30	US	DOE Crude Oil Implied Demand	18-Feb	--	--	--
02/24/2011 15:30	US	DOE Distillate Implied Demand	18-Feb	--	--	--
02/24/2011 15:30	US	DOE Gasoline Implied Demand	18-Feb	--	--	--
02/24/2011 18:00	US	U.S. to Sell 7-Year Notes				
02/24/2011 23:30	JN	Tokyo CPI YoY	FEB	--	--	-0.10%
02/24/2011 23:30	JN	Tokyo CPI Ex-Fresh Food YoY	FEB	--	--	-0.20%
02/24/2011 23:30	JN	Tokyo CPI Ex Food, Energy YoY	FEB	--	--	-0.30%
02/24/2011 23:30	JN	Natl CPI YoY	JAN	--	--	0.00%
02/24/2011 23:30	JN	Natl CPI Ex-Fresh Food YoY	JAN	--	--	--
02/24/2011 23:30	JN	Natl CPI Ex Food, Energy YoY	JAN	--	--	-0.70%
02/25/2011 00:01	UK	GfK Consumer Confidence Survey	FEB	--	--	-29
02/25/2011 01:35	CH	MNI Business Condition Survey	FEB	--	--	61.11
02/25/2011 09:00	EC	Euro-Zone M3 s.a. 3 mth ave.	JAN	--	--	1.60%
02/25/2011 09:00	EC	Euro-Zone M3 s.a. (YoY)	JAN	--	--	1.70%
02/25/2011 09:30	UK	GDP (QoQ)	4Q P	--	--	-0.50%
02/25/2011 09:30	UK	GDP (YoY)	4Q P	--	--	1.70%
02/25/2011 09:30	UK	Private Consumption	4Q P	--	--	0.30%
02/25/2011 09:30	UK	Government Spending	4Q P	--	--	-0.40%
02/25/2011 09:30	UK	Gross Fixed Capital Formation	4Q P	--	--	3.40%
02/25/2011 09:30	UK	Exports	4Q P	--	--	1.50%
02/25/2011 09:30	UK	Imports	4Q P	--	--	1.70%
02/25/2011 09:30	UK	Index of Services (MoM)	DEC	--	--	0.00%
02/25/2011 09:30	UK	Index of Services (3mth/3mth)	DEC	--	--	0.50%

Daily Market Report

02/25/2011 09:30	UK	Total Business Investment(QoQ)	4Q P	--	--	3.10%
02/25/2011 09:30	UK	Total Business Investment(YoY)	4Q P	--	--	8.90%
02/25/2011 13:30	US	GDP QoQ (Annualized)	4Q S	--	--	3.20%
02/25/2011 13:30	US	GDP Price Index	4Q S	--	--	0.30%
02/25/2011 13:30	US	Core PCE QoQ	4Q S	--	--	0.40%
02/25/2011 13:30	US	Personal Consumption	4Q S	--	--	4.40%
02/25/2011 14:55	US	U. of Michigan Confidence	FEB F	--	--	--
02/25/2011 15:15	US	Fed's Lacker, Diamond Discuss Report on				
02/25/2011 18:00	US	Baker Hughes U.S. Rig Count	25-Feb	--	--	--
02/25/2011 18:30	US	Fed's Yellen, BOE's Bean, ECB's Constancio				
02/25/2011	GE	Consumer Price Index (MoM)	FEB P	--	--	--
02/25/2011	GE	Consumer Price Index (YoY)	FEB P	--	--	--
02/25/2011	GE	CPI - Brandenburg (MoM)	FEB	--	--	-0.50%
02/25/2011	GE	CPI - Brandenburg (YoY)	FEB	--	--	1.50%
02/25/2011	GE	CPI - Bavaria (MoM)	FEB	--	--	-0.30%
02/25/2011	GE	CPI - Bavaria (YoY)	FEB	--	--	2.00%
02/25/2011	GE	CPI - Baden Wuerttemberg (MoM)	FEB	--	--	-0.40%
02/25/2011	GE	CPI - Baden Wuerttemberg (YoY)	FEB	--	--	2.10%
02/25/2011	GE	CPI - Hesse (MoM)	FEB	--	--	-0.50%
02/25/2011	GE	CPI - Hesse (YoY)	FEB	--	--	1.60%
02/25/2011	GE	CPI - EU Harmonised (MoM)	FEB P	--	--	--
02/25/2011	GE	CPI - EU Harmonised (YoY)	FEB P	--	--	--
02/25/2011	GE	CPI - North Rhine-West. (MoM)	FEB	--	--	-0.50%
02/25/2011	GE	CPI - North Rhine-West. (YoY)	FEB	--	--	2.00%
02/25/2011	GE	CPI - Saxony (MoM)	FEB	--	--	-0.50%
02/25/2011	GE	CPI - Saxony (YoY)	FEB	--	--	1.90%

Company Name	Company Ticker	Date	Time	Actual	Estimate	Surprise
Agilent Technologies Inc	A US	2/14/2011	21:05		0.575	
Marriott International Inc/DE	MAR US	2/14/2011	21:30		0.362	
FMC Technologies Inc	FTI US	2/14/2011	Aft-mkt		0.698	
Masco Corp	MAS US	2/14/2011	Aft-mkt		-0.03	
Watson Pharmaceuticals Inc	WPI US	2/15/2011	Bef-mkt		0.931	
HCP Inc	HCP US	2/15/2011	Bef-mkt		0.595	
Host Hotels & Resorts Inc	HST US	2/15/2011	Bef-mkt		0.276	
CenturyLink Inc	CTL US	2/15/2011	Bef-mkt		0.772	
Marsh & McLennan Cos Inc	MMC US	2/15/2011	Bef-mkt		0.389	
Qwest Communications International Inc	Q US	2/15/2011	12:00		0.096	
Analog Devices Inc	ADI US	2/15/2011	21:00		0.651	
Nabors Industries Ltd	NBR US	2/15/2011	Aft-mkt		0.376	
Dell Inc	DELL US	2/15/2011			0.366	

Daily Market Report

Omnicom Group Inc	OMC US	2/15/2011		0.805
Health Care REIT Inc	HCN US	2/16/2011	Bef-mkt	0.77
Genzyme Corp	GENZ US	2/16/2011	Bef-mkt	0.868
FirstEnergy Corp	FE US	2/16/2011	Bef-mkt	0.801
Cablevision Systems Corp	CVC US	2/16/2011	Bef-mkt	0.406
Dean Foods Co	DF US	2/16/2011	Bef-mkt	0.144
Devon Energy Corp	DVN US	2/16/2011	Bef-mkt	1.381
Deere & Co	DE US	2/16/2011	12:00	0.952
Abercrombie & Fitch Co	ANF US	2/16/2011	12:00	1.317
	CMCSA			
Comcast Corp	US	2/16/2011	12:00	0.324
NVIDIA Corp	NVDA US	2/16/2011	21:20	0.203
O'Reilly Automotive Inc	ORLY US	2/16/2011	23:30	0.633
CBS Corp	CBS US	2/16/2011	Aft-mkt	0.435
Cliffs Natural Resources Inc	CLF US	2/16/2011	Aft-mkt	2.213
Express Scripts Inc	ESRX US	2/16/2011	Aft-mkt	0.7
NetApp Inc	NTAP US	2/16/2011	Aft-mkt	0.497
Ventas Inc	VTR US	2/17/2011	Bef-mkt	0.749
Waste Management Inc	WM US	2/17/2011	Bef-mkt	0.55
Ecolab Inc	ECL US	2/17/2011	Bef-mkt	0.607
PG&E Corp	PCG US	2/17/2011	Bef-mkt	0.726
Williams Cos Inc/The	WMB US	2/17/2011	Bef-mkt	0.28
Dr Pepper Snapple Group Inc	DPS US	2/17/2011	Bef-mkt	0.64
Newfield Exploration Co	NFX US	2/17/2011	Bef-mkt	1.258
Duke Energy Corp	DUK US	2/17/2011	12:00	0.233
JM Smucker Co/The	SJM US	2/17/2011	12:00	1.257
Nordstrom Inc	JWN US	2/17/2011	21:05	0.994
Intuit Inc	INTU US	2/17/2011	Aft-mkt	0.336
CF Industries Holdings Inc	CF US	2/17/2011	Aft-mkt	2.612
Apache Corp	APA US	2/17/2011		2.442
First Solar Inc	FSLR US	2/17/2011		1.744
Campbell Soup Co	CPB US	2/18/2011	Bef-mkt	0.718
EOG Resources Inc	EOG US	2/18/2011	Bef-mkt	0.259
Progress Energy Inc	PGN US	2/18/2011	12:30	0.446
Allegheny Energy Inc	AYE US	2/18/2011		0.486
Pinnacle West Capital Corp	PNW US	2/18/2011		0.01
Hormel Foods Corp	HRL US	2/18/2011		0.848
Windstream Corp	WIN US	2/18/2011		0.199
Oneok Inc	OKE US	2/21/2011	Aft-mkt	0.785
Expeditors International of Washington Inc	EXPD US	2/22/2011	Bef-mkt	0.448

Daily Market Report

RR Donnelley & Sons Co	RRD US	2/22/2011	Bef-mkt	0.47
Medco Health Solutions Inc	MHS US	2/22/2011	Bef-mkt	0.937
Home Depot Inc	HD US	2/22/2011	11:00	0.303
Wal-Mart Stores Inc	WMT US	2/22/2011	12:00	1.314
VF Corp	VFC US	2/22/2011	12:00	1.648
Public Service Enterprise Group Inc	PEG US	2/22/2011	13:45	0.615
Cabot Oil & Gas Corp	COG US	2/22/2011	Aft-mkt	0.204
RadioShack Corp	RSH US	2/22/2011	Aft-mkt	0.536
Hewlett-Packard Co	HPQ US	2/22/2011	Aft-mkt	1.284
Chesapeake Energy Corp	CHK US	2/22/2011	Aft-mkt	0.642
Lowe's Cos Inc	LOW US	2/22/2011		0.175
NRG Energy Inc	NRG US	2/22/2011		0.409
Quanta Services Inc	PWR US	2/22/2011		0.202
Macy's Inc	M US	2/22/2011		1.523
Genuine Parts Co	GPC US	2/22/2011		0.703
Ameren Corp	AEE US	2/22/2011		0.23
Denbury Resources Inc	DNR US	2/23/2011	Bef-mkt	0.198
Frontier Communications Corp	FTR US	2/23/2011	Bef-mkt	0.1
American Tower Corp	AMT US	2/23/2011	12:00	0.221
TJX Cos Inc	TJX US	2/23/2011	14:30	1.02
QEP Resources Inc	QEP US	2/23/2011	Aft-mkt	0.343
Ltd Brands Inc	LTD US	2/23/2011	Aft-mkt	1.25
Flowserve Corp	FLS US	2/23/2011	Aft-mkt	1.964
Integrus Energy Group Inc	TEG US	2/24/2011	1:00	0.78
DIRECTV	DTV US	2/23/2011		0.63
priceline.com Inc	PCLN US	2/23/2011		3.098
Washington Post Co/The	WPO US	2/23/2011		8.72
Medtronic Inc	MDT US	2/23/2011		0.833
Fluor Corp	FLR US	2/23/2011		0.748
Sears Holdings Corp	SHLD US	2/24/2011	Bef-mkt	3.574
MetroPCS Communications Inc	PCS US	2/24/2011	Bef-mkt	0.13
Iron Mountain Inc	IRM US	2/24/2011	Bef-mkt	0.298
Safeway Inc	SWY US	2/24/2011	Bef-mkt	0.581
Patterson Cos Inc	PDCO US	2/24/2011	Bef-mkt	0.511
Newmont Mining Corp	NEM US	2/24/2011	Bef-mkt	1.138
Kohl's Corp	KSS US	2/24/2011	12:00	1.66
El Paso Corp	EP US	2/24/2011	12:30	0.231
CMS Energy Corp	CMS US	2/24/2011	13:30	0.205
Gap Inc/The	GPS US	2/24/2011	21:00	0.57
American International Group Inc	AIG US	2/24/2011	Aft-mkt	-20.385
Salesforce.com Inc	CRM US	2/24/2011	Aft-mkt	0.262

Daily Market Report

Range Resources Corp	RRC US	2/24/2011		0.136
Autodesk Inc	ADSK US	2/24/2011		0.332
Nicor Inc	GAS US	2/24/2011		0.93
Applied Materials Inc	AMAT US	2/24/2011		0.322
Vornado Realty Trust	VNO US	2/24/2011		1.576
Target Corp	TGT US	2/24/2011		1.393
Pepco Holdings Inc	POM US	2/25/2011	Bef-mkt	0.093
Rowan Cos Inc	RDC US	2/25/2011	Bef-mkt	0.289
Tenet Healthcare Corp	THC US	2/25/2011	Bef-mkt	0.078
Interpublic Group of Cos Inc/The	IPG US	2/25/2011	12:00	0.307
JC Penney Co Inc	JCP US	2/25/2011	12:50	1.16
Sempra Energy	SRE US	2/25/2011		0.944
AES Corp/The	AES US	2/25/2011		0.254
Public Storage	PSA US	2/25/2011		1.367
Leucadia National Corp	LUK US	2/25/2011		
Southwestern Energy Co	SWN US	2/25/2011		0.423
Northeast Utilities	NU US	2/25/2011		0.649
Mylan Inc/PA	MYL US	2/25/2011		0.441

Company Name	Company Ticker	Date	Time	Actual	Estimate	Surprise
Nexans SA	NEX FP	2/14/2011	Bef-mkt		1.944	
Bilfinger Berger SE	GBF GR	2/14/2011	6:30		5.77	
Meda AB	MEDAA SS	2/14/2011			5.073	
Metropole Television SA	MMT FP	2/15/2011	Bef-mkt		1.189	
Straumann Holding AG	STMN SW	2/15/2011	5:30		8.949	
Air Liquide SA	AI FP	2/15/2011	6:30		4.925	
Danone	BN FP	2/15/2011	6:30		2.725	
Trelleborg AB	TRELB SS	2/15/2011	6:45		5.553	
Intercontinental Hotels Group PLC	IHG LN	2/15/2011	7:00		0.947	
Yara International ASA	YAR NO	2/15/2011	7:00		21.208	
British Land Co PLC	BLND LN	2/15/2011	7:00		0.07	
Barclays PLC	BARC LN	2/15/2011	7:00		0.266	
Puma AG Rudolf Dassler Sport	PUM GR	2/15/2011	9:00		15.197	
Imerys SA	NK FP	2/15/2011	Aft-mkt		3.22	
EDF SA	EDF FP	2/15/2011			1.88	
Imtech NV	IM NA	2/15/2011			1.922	
Deutsche Boerse AG	DB1 GR	2/15/2011			3.29	
Sydbank A/S	SYDB DC	2/15/2011			10.384	
Croda International PLC	CRDA LN	2/15/2011			0.91	

Daily Market Report

Atos Origin SA	ATO FP	2/16/2011	Bef-mkt	2.71
Storebrand ASA	STB NO	2/16/2011	5:30	3.542
Societe Generale	GLE FP	2/16/2011	6:00	5.14
Heineken Holding NV	HEIO NA	2/16/2011	6:00	2.783
Synthes Inc	SYST VX	2/16/2011	6:00	7.668
Clariant AG	CLN VX	2/16/2011	6:00	1.631
ING Groep NV	INGA NA	2/16/2011	6:00	0.973
Heineken NV	HEIA NA	2/16/2011	6:00	2.47
Oriflame Cosmetics SA	ORI SS	2/16/2011	6:15	2.044
Norsk Hydro ASA	NHY NO	2/16/2011	6:30	1.274
Kinnevik Investment AB	KINVB SS	2/16/2011	7:00	10.405
ENI SpA	ENI IM	2/16/2011	7:00	1.879
Daimler AG	DAI GR	2/16/2011	9:00	4.52
Temenos Group AG	TEMN SW	2/16/2011	16:30	1.503
ICADE	ICAD FP	2/16/2011	Aft-mkt	1.896
Societe BIC SA	BB FP	2/16/2011		4.385
BHP Billiton PLC	BLT LN	2/16/2011		1.832
ABB Ltd	ABBN VX	2/17/2011	5:00	1.177
AXA SA	CS FP	2/17/2011	6:00	1.565
Akzo Nobel NV	AKZA NA	2/17/2011	6:00	3.339
Swiss Reinsurance Co Ltd	RUKN VX	2/17/2011	6:00	4.039
BNP Paribas	BNP FP	2/17/2011	6:00	6.575
Actelion Ltd	ATLN VX	2/17/2011	6:00	3.618
Technip SA	TEC FP	2/17/2011	6:00	3.723
PPR	PP FP	2/17/2011	6:00	7.421
Nestle SA	NESN VX	2/17/2011	6:15	3.192
Schneider Electric SA	SU FP	2/17/2011	6:30	6.96
Pernod-Ricard SA	RI FP	2/17/2011	6:30	2.698
Swisscom AG	SCMN VX	2/17/2011	6:30	36.208
Randstad Holding NV	RAND NA	2/17/2011	6:30	1.976
Aker Solutions ASA	AKSO NO	2/17/2011	7:00	6.61
Petroleum Geo-Services ASA	PGS NO	2/17/2011	7:00	0.336
FLSmidth & Co A/S	FLS DC	2/17/2011	7:00	26.114
Ladbrokes PLC	LAD LN	2/17/2011	7:00	0.143
Ratos AB	RATOB SS	2/17/2011	7:30	10.15
Nobel Biocare Holding AG	NOBN VX	2/17/2011	8:30	0.462
Corio NV	CORA NA	2/17/2011	Aft-mkt	2.926
Eutelsat Communications	ETL FP	2/17/2011	Aft-mkt	0.75
Societe Television Francaise 1	TFI FP	2/17/2011		0.631
Reed Elsevier NV	REN NA	2/17/2011		0.778
Eramet	ERA FP	2/17/2011		14.255
Schindler Holding AG	SCHP SW	2/17/2011		5.648

Daily Market Report

Solvay SA	SOLB BB	2/17/2011		3.124
Gecina SA	GFC FP	2/17/2011		5.357
Cap Gemini SA	CAP FP	2/17/2011		2.039
BAE Systems PLC	BA/ LN	2/17/2011		0.421
Reed Elsevier PLC	REL LN	2/17/2011		0.43
Schibsted ASA	SCH NO	2/18/2011	6:00	9.973
Lafarge SA	LG FP	2/18/2011	6:00	2.977
Charter International PLC	CHTR LN	2/18/2011	7:00	0.655
SES SA	SESG FP	2/18/2011	7:00	1.218
Jeronimo Martins SGPS SA	JMT PL	2/18/2011	7:30	0.445
Alpiq Holding AG	ALPH SW	2/18/2011		21.92
Bolsas y Mercados Espanoles SA	BME SM	2/18/2011		1.805
Voestalpine AG	VOE AV	2/18/2011		0.72
Anglo American PLC	AAL LN	2/18/2011		3.907
Rentokil Initial PLC	RTO LN	2/18/2011		0.08
Carlsberg A/S	CARLB DC	2/21/2011	6:00	36.548
TNT NV	TNT NA	2/21/2011		1.382
Merck KGaA	MRK GR	2/21/2011		6.343
Hammerson PLC	HMSO LN	2/21/2011		0.196
Fonciere Des Regions	FDR FP	2/22/2011	Bef-mkt	5.581
Wienerberger AG	WIE AV	2/22/2011	7:00	-0.371
Gas Natural SDG SA	GAS SM	2/22/2011		1.229
Jyske Bank A/S	JYSK DC	2/22/2011		14.602
Dragon Oil PLC	DGO ID	2/22/2011		0.686
Kerry Group PLC	KYG ID	2/22/2011		1.923
Drax Group PLC	DRX LN	2/22/2011		0.612
Informa PLC	INF LN	2/22/2011		0.348
Bunzl PLC	BNZL LN	2/22/2011		0.595
Telekom Austria AG	TKA AV	2/23/2011	6:00	0.659
Accor SA	AC FP	2/23/2011	6:00	1.109
Natixis	KN FP	2/23/2011	6:00	0.431
Koninklijke DSM NV	DSM NA	2/23/2011	6:15	3.166
OMV AG	OMV AV	2/23/2011	6:30	3.976
Rhodia SA	RHA FP	2/23/2011	6:30	2.556
CNP Assurances	CNP FP	2/23/2011	6:30	1.829
Capital Shopping Centres Group PLC	CSCG LN	2/23/2011	7:00	0.155
Husqvarna AB	HUSQB SS	2/23/2011	7:00	3.274
Wolters Kluwer NV	WKL NA	2/23/2011	7:00	1.473
Swedish Match AB	SWMA SS	2/23/2011	7:00	11.038
Subsea 7 SA	SUBC NO	2/23/2011	11:00	0.255

Daily Market Report

Vallourec SA	VK FP	2/23/2011	16:45	3.755
Tenaris SA	TEN IM	2/23/2011	Aft-mkt	1
Ferrovial SA	FER SM	2/23/2011	Aft-mkt	0.12
Commerzbank AG	CBK GR	2/23/2011		0.998
CSM	CSM NA	2/23/2011		1.846
	MAERSKB			
AP Moller - Maersk A/S	DC	2/23/2011		5762.72
Iberdrola Renovables SA	IBR SM	2/23/2011		0.094
Fresenius Medical Care AG & Co KGaA	FME GR	2/23/2011		3.26
Fresenius SE & Co KGaA	FRE GR	2/23/2011		4.034
Rexam PLC	REX LN	2/23/2011		0.322
Henderson Group PLC	HGG LN	2/23/2011		0.097
Travis Perkins PLC	TPK LN	2/23/2011		0.752
Logica PLC	LOG LN	2/23/2011		0.121
Iberdrola SA	IBE SM	2/24/2011	Bef-mkt	0.514
Repsol YPF SA	REP SM	2/24/2011	Bef-mkt	1.752
Seadrill Ltd	SDRL NO	2/24/2011	Bef-mkt	2.748
EDP Renovaveis SA	EDPR PL	2/24/2011	Bef-mkt	0.101
Portugal Telecom SGPS SA	PTC PL	2/24/2011	Bef-mkt	0.456
BASF SE	BAS GR	2/24/2011	6:00	5.241
Royal Bank of Scotland Group PLC	RBS LN	2/24/2011	6:00	0.006
Allianz SE	ALV GR	2/24/2011	6:00	11.228
RWE AG	RWE GR	2/24/2011	6:00	6.915
RSA Insurance Group PLC	RSA LN	2/24/2011	7:00	0.109
Mondi PLC	MNDI LN	2/24/2011	7:00	0.447
Telenet Group Holding NV	TNET BB	2/24/2011	16:45	0.935
ACS Actividades de Construccion y Servicios SA	ACS SM	2/24/2011	17:00	3.205
Cie de St-Gobain	SGO FP	2/24/2011	Aft-mkt	2.55
Valeo SA	FR FP	2/24/2011	Aft-mkt	4.481
Piraeus Bank SA	TPEIR GA	2/24/2011		-0.05
DSV A/S	DSV DC	2/24/2011		5.93
Thales SA	HO FP	2/24/2011		1.612
Dexia SA	DEXB BB	2/24/2011		0.427
Safran SA	SAF FP	2/24/2011		1.264
Indra Sistemas SA	IDR SM	2/24/2011		1.233
Sulzer AG	SUN SW	2/24/2011		7.712
Acerinox SA	ACX SM	2/24/2011		0.553
Acciona SA	ANA SM	2/24/2011		2.638
Aegon NV	AGN NA	2/24/2011		0.789
Telecom Italia SpA	TIT IM	2/24/2011		0.12

Daily Market Report

Eiffage SA	FGR FP	2/24/2011		2.661
Abertis Infraestructuras SA	ABE SM	2/24/2011		0.912
Gamesa Corp Tecnologica SA	GAM SM	2/24/2011		0.21
Grifols SA	GRF SM	2/24/2011		0.637
Edenred	EDEN FP	2/24/2011		0.739
Henkel AG & Co KGaA	HEN3 GR	2/24/2011		2.8
France Telecom SA	FTE FP	2/24/2011		1.909
Segro PLC	SGRO LN	2/24/2011		0.17
Centrica PLC	CNA LN	2/24/2011		0.251
British American Tobacco PLC	BATS LN	2/24/2011		1.736
Ashmore Group PLC	ASHM LN	2/24/2011		0.141
Capita Group PLC/The	CPI LN	2/24/2011		0.433
Barratt Developments PLC	BDEV LN	2/24/2011		-0.005
National Express Group PLC	NEX LN	2/24/2011		0.234
Credit Agricole SA	ACA FP	2/25/2011	4:00	0.914
Telefonica SA	TEF SM	2/25/2011	Bef-mkt	2.013
Endesa SA	ELE SM	2/25/2011	Bef-mkt	2.489
Red Electrica Corp SA	REE SM	2/25/2011	Bef-mkt	2.886
Bekaert SA	BEKB BB	2/25/2011	Bef-mkt	6.045
Spectris PLC	SXS LN	2/25/2011	7:00	0.85
Amadeus IT Holding SA	AMS SM	2/25/2011	12:00	0.879
Cie Generale de Geophysique - Veritas	GA FP	2/25/2011	13:30	-0.279
Hellenic Telecommunications Organization SA	HTO GA	2/25/2011		0.609
Fomento de Construcciones y Contratas SA	FCC SM	2/25/2011		2.301
Gestevisión Telecinco SA	TL5 SM	2/25/2011		0.579
Tecnicas Reunidas SA	TRE SM	2/25/2011		2.466
Belgacom SA	BELG BB	2/25/2011		2.463
Mediobanca SpA	MB IM	2/25/2011		
Banca Popolare di Sondrio SCARL	BPSO IM	2/25/2011		
Deutsche Telekom AG	DTE GR	2/25/2011		0.773
PSP Swiss Property AG	PSPN SW	2/25/2011		3.463
Criteria Caixacorp SA	CRI SM	2/25/2011		0.423
Aeroports de Paris	ADP FP	2/25/2011		2.967
Erste Group Bank AG	EBS AV	2/25/2011		2.417
GN Store Nord A/S	GN DC	2/25/2011		9.225
Lloyds Banking Group PLC	LLOY LN	2/25/2011		0.008
William Hill PLC	WMH LN	2/25/2011		0.205

Disclaimer. This report was prepared and provided for information purposes only under the condition it will not form the sole basis for any investment decision. It does not constitute an offer and should not be considered as an offer, or solicitation of an offer, to buy or sell any securities. The information and opinions contained in this report have been received from sources believed to be reliable. While every reasonable effort has been made to obtain accurate information and verify it, IC RUSS-INVEST or its affiliates makes no warranty, express or implied, as to the accuracy, completeness or correctness of the information and opinions contained herein. All such information, opinions and forecasts are subject to further change without notice. The forward-looking statements in this report are subject to risks, uncertainties and other factors that could cause actual results to differ materially from those stated in such statements. Neither we nor any of our respective agents, employees or advisors intend or have any duty or obligation to supply, amend, update or revise any of the forward-looking statements contained in this report. IC RUSS-INVEST, its directors and employees may have a position in any of the securities mentioned in this report. The report cannot be used on the territory of the USA, Canada, Great Britain, Japan, neither it can be a subject of national regulation of the states mentioned.

INVESTMENT COMPANY IC RUSS-INVEST

www.russ-invest.com

Moscow

Telephone: +7(495) 363-93-80
Fax: +7(495) 363-93-90
E-mail: mail@russ-invest.com
Mailing address: 5-3/12 Nashchiokinsky
Pereulok, bldg. 4, 119019 Moscow

St-Petersburg

Telephone: +7(812) 337-55-37
Fax: +7(812) 337-55-37
E-mail: spb@russ-invest.com
Mailing address: 52 , Fontanky
Embankment, 190002 St-Petersburg

Samara

Telephone: +7 (846) 262-75-52
Fax: +7 (846) 262-75-52
E-mail: sam@russ-invest.com
Mailing address: 443067, Самара, ул.
агарина, 95

© 2007 | OJSC «IC RUSS-INVEST»
Licenses of FCFM №077-08757-000100 и №077-08755-001000
Licenses of FCFM №177-06310-100000 и №177-06312-010000
Licenses of FCFM №906