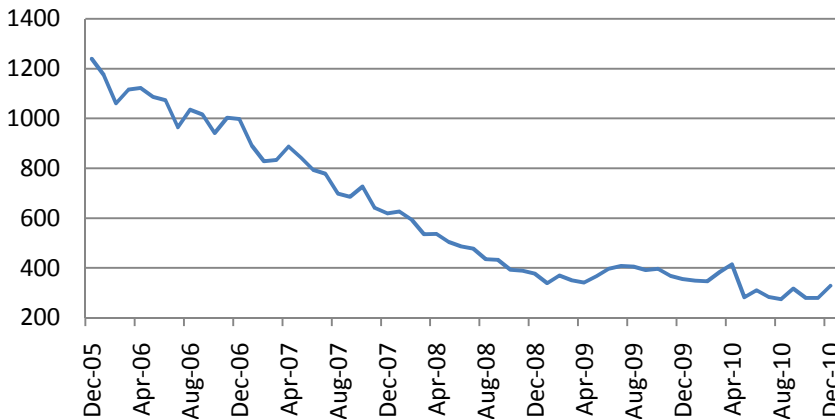


January 28, 2011

US Statistical data

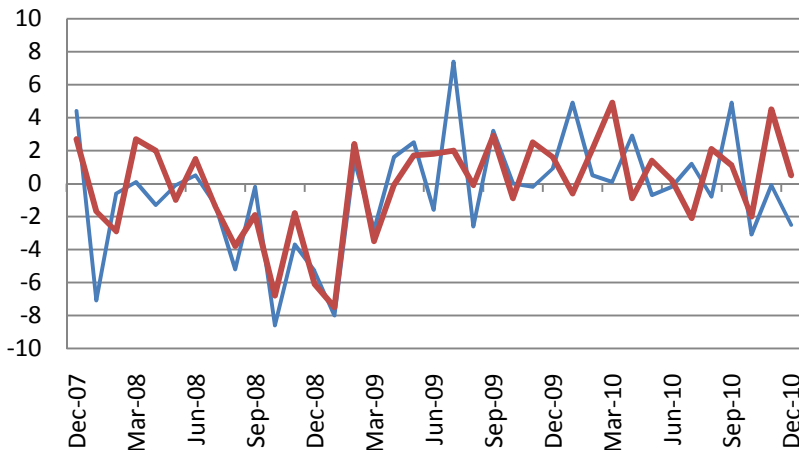
Initial jobless claims up to 454 000 vs consensus forecast of 405 000.

Initial jobless claims, weekly chg, thous.



Durable good orders down 2.5% in December (consensus - +1.5%). Excluding transportation, durable good orders – up 0.5% (consensus - +0.9%)

Durable good orders, %, m/m



Pending home sales – up 2.0% (consensus – 1.0%)

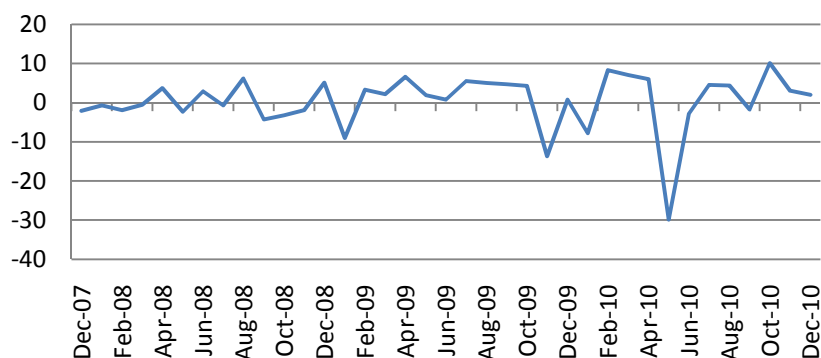
Macro Indicators		
CDS HY 5Y	407.74	+0.30%
ITX Crossover	293.27	+1.84%
CDS Japan 5Y	81.70	+2.77%
CDS EM 5Y	113.02	-0.29%
CDS Russia 5Y	143.51	+2.75%
US Tsys 10Y	3.54%	-0.10%
US Tsys 5Y	2.14%	-0.08%
Brazil 10Y	4.23%	+0.00%
Germany 10Y	3.06%	+0.06%
EUR/USD	1.3718	+0.11%
USD/JPY	82.66	+0.33%
EUR/GBP	0.8639	-0.33%
Oil Brent	97.88	+0.50%
Gold	1317.7	-0.16%
Copper	9441	+1.19%
Nickel	26463	-0.02%
S&P 500	1293	-0.21%
Russell 2000	795.43	+0.00%
Bovespa	68050.71	-0.96%
Topix	919.5	-0.05%
Shanghai Comp	2,752.75	+0.13%
S&P/ASX 300	4,774.90	-0.65%
Sensex 30	18,408.36	-1.48%
Bovespa	68,050.71	-0.96%
DJ Euro Stoxx	2996	+0.10%
CAC Futures	4058	-0.07%
DAX Futures	7172	+0.13%
CBOE Put/Call	0.56	-3.45%
CBOE	824.31	+0.22%
VIX	16.15	-2.94%
VSTOXX	20.9088	-0.95%

Factor Assessment		
Factor	Grade	Prev. Grade
US credit risks	3	3
Fed Activity	5	4
Corporate news	8	8
Economic statistics	8	8
Inflation concerns	4	4
China tightening	4	4
European Sovereign	5	5
Risks		

*As of 9:00 GMT, Bloomberg

Daily Market Report

Pending home sales, %, m/m



Earnings reports (sectoral results)

Sector	Reported	Total	Growth	Surprise	Pos Surp	Neg Surp
All Securities	176	499	49.23%	7.87%	132	44
Oil & Gas	11	38	30.61%	5.50%	9	2
Basic Materials	13	26	41.11%	14.50%	11	2
Industrials	34	73	19.57%	6.77%	26	8
Consumer Goods	13	54	-13.53%	2.57%	11	2
Health Care	18	45	5.61%	3.29%	15	3
Consumer Services	10	73	9.46%	3.28%	6	4
Telecommunications	2	10	5.25%	1.02%	1	1
Utilities	5	35	-5.54%	-1.12%	1	4
Financials	38	83	8913.73%	4.07%	25	13
Technology	32	62	33.27%	16.39%	27	5

Daily Market Report

Most active stocks in Europe*

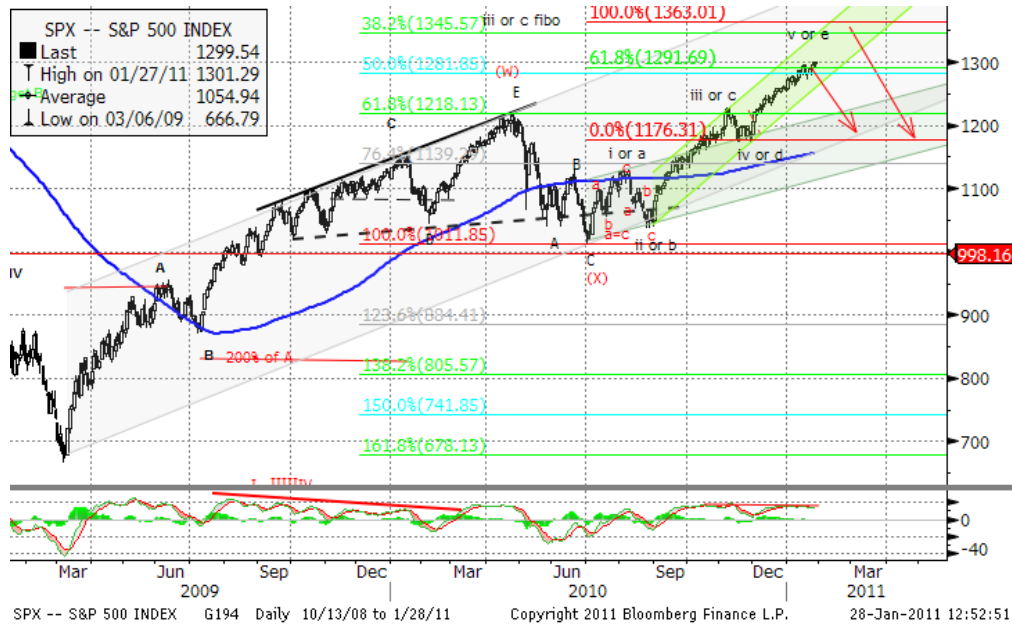
BELLWAY PLC	616	-3.45%
TUI TRAVEL PLC	262.8	-3.35%
SANOFI-AVENTIS	49.675	-2.92%
PETROPAVLOVSK	1040	-2.62%
BERKELEY GROUP	896.5	-2.50%
OPAP SA	14.91	-2.49%
IG GROUP HOLDING	450.9	-2.36%
GLAXOSMITHKLINE	1147.5	-2.17%
NATL BANK GREECE	6.84	+2.86%
MICHAEL PAGE INT	550.5	+2.90%
IRISH LIFE & PER	0.96	+3.11%
BANK IRELAND	0.335	+3.40%
BANK GREECE	35.21	+3.68%
BANCO POPOLARE S	2.6225	+4.07%
WARTSILA OYJ	56.3	+4.16%

S&P 500 Sub-index	Last	Change
CONS	302.67	+0.77%
DISCRET		
CONS	302.23	-0.90%
STAPLES		
ENERGY	532.94	-0.45%
FINANCIALS	222.66	+0.87%
HEALTH CARE	372.31	+0.30%
INDUSTRIALS	316.72	+0.54%
INFO TECH	428.58	+0.54%
MATERIALS	239.05	-0.72%
TELECOM	126.34	-0.91%
SERV		
UTILITIES	163.05	+0.35%

DJIA Eurostoxx	Last	Change
SX3P	345.47	-0.43%
SX4P	551.82	-0.39%
SX6P	326.44	+0.24%
SX7P	216.2	+0.57%
SX86P	116.38	-0.15%
SX8P	228.89	-0.31%
SXAP	357.1	+0.14%
SXDP	383.79	-0.76%
SXEP	347.47	-0.48%
SXFP	277.46	-0.25%
SXIP	171.58	+0.39%
SXKP	280.47	-0.60%
SXMP	187.22	-0.36%
SXNP	335.98	-0.24%
SXOP	288.6	-0.17%
SXPP	604.15	-1.41%
SXQP	402.96	-0.77%
SXRP	263.92	-0.31%
SXTP	132.84	-0.55%
SX3P	345.47	-0.43%

Technical view

S&P 500 Index, daily



The S&P 500 has passed 1280 (61.8% projection of wave 3 or C). Final target of the current move may be around 1376. After the 5th of V is finished, correction to 1230 is likely to come.

However, a pessimistic midterm target seems to be around 1000, after the pattern is completed and (C) starts.

Current support levels are at 1230, 1180, 1130, 1092, 1041, 1010, 980, 950, 870.

Resistance level: 1376.

Dow Jones Stoxx 600 Europe Index, daily



The index has broken wedge upper line as a resistance level. Final target of the current wave may be around 297.

Pessimistic scenario will be activated if the support at 276 is broken (this will point 258, 243, 210 levels as the final targets of the downward leg (C)).

Important support levels: 275.8, 263, 256, 243, 238, 217.

Important resistance levels – 280, 286.

Daily Market Report

EURUSD, daily



EURUSD current pattern is likely a zigzag in a wide triangle, which has its lower bound around 1.17. After short consolidation, another leg down with a support around 1.26 should unwind in the coming days.

Daily Market Report

Macroeconomic calendar*						
Время, GMT	Страна	Данные	Период	Прогноз	Значение	Прошл.
01/24/2011 03:32	CH	Leading Index	DEC	--	100.76	101.58
01/24/2011 05:00	JN	Supermarket Sales (YoY)	DEC	--	-1.60%	-0.50%
01/24/2011 08:30	GE	PMI Manufacturing	JAN A	60.9	--	60.9
01/24/2011 08:30	GE	PMI Services	JAN A	59	--	58.3
01/24/2011 09:00	EC	PMI Composite	JAN A	55.6	--	55.5
01/24/2011 09:00	EC	PMI Manufacturing	JAN A	57	--	57.1
01/24/2011 09:00	EC	PMI Services	JAN A	54.3	--	54.2
01/24/2011 10:00	EC	Industrial New Orders NSA (YoY)	NOV	17.40%	--	14.80%
01/24/2011 10:00	EC	Industrial New Orders SA (MoM)	NOV	1.90%	--	1.40%
01/24/2011 16:00	US	U.S. Fed to Purchase USD7-9 Bln	23-Apr			
01/24/2011 16:30	US	U.S. to Sell USD29 Bln 3-Month Bills	23-Apr			
01/24/2011 16:30	US	U.S. to Sell USD28 Bln 6-Month Bills	23-Apr			
01/25/2011 07:00	GE	GfK Consumer Confidence Survey	FEB	5.4	--	5.4
01/25/2011 09:30	UK	GDP (QoQ)	4Q A	0.50%	--	0.70%
01/25/2011 09:30	UK	GDP (YoY)	4Q A	2.60%	--	2.70%
01/25/2011 09:30	UK	Index of Services (3mth/3mth)	NOV	0.80%	--	0.60%
01/25/2011 09:30	UK	Index of Services (MoM)	NOV	0.50%	--	-0.40%
01/25/2011 09:30	UK	Public Finances (PSNCR)	DEC	16.3B	--	16.8B
01/25/2011 09:30	UK	PSNB ex Interventions	DEC	20.0B	--	23.3B
01/25/2011 09:30	UK	Public Sector Net Borrowing	DEC	18.0B	--	22.8B
01/25/2011	JN	BOJ Target Rate	25-Jan	0.10%	--	0.10%
01/25/2011 14:00	US	S&P/CaseShiller Home Price Ind	NOV	--	--	145.32
01/25/2011 14:00	US	S&P/CS 20 City MoM% SA	NOV	-0.93%	--	-0.99%
01/25/2011 14:00	US	S&P/CS Composite-20 YoY	NOV	-1.70%	--	-0.80%
01/25/2011 15:00	US	Consumer Confidence	JAN	54.2	--	52.5
01/25/2011 15:00	US	House Price Index MoM	NOV	0.00%	--	0.70%
01/25/2011 15:00	US	Richmond Fed Manufact. Index	JAN	22	--	25
01/25/2011 16:00	US	U.S. Fed to Purchase USD6-8 Bln	23-Apr			
01/25/2011 16:30	US	U.S. to Sell 4-Week Bills	23-Apr			
01/25/2011 18:00	US	U.S. to Sell USD35 Bln 2-Year Notes	23-Apr			
01/25/2011 21:30	US	API U.S. Crude Oil Inventories	21-Jan	--	--	3533K
01/25/2011 21:30	US	API Cushing Crude OK Inventory	21-Jan	--	--	-571K
01/25/2011 21:30	US	API U.S. Distillate Inventory	21-Jan	--	--	940K
01/25/2011 21:30	US	API U.S. Gasoline Inventories	21-Jan	--	--	1869K
01/25/2011 22:00	US	ABC Consumer Confidence	23-Jan	--	--	-43
01/25/2011 23:50	JN	Corp Service Price Index (YoY)	DEC	-1.30%	--	-1.10%
01/26/2011 01:00	JN	Small Business Confidence	JAN	--	--	45.9
01/26/2011 05:00	JN	BOJ Monthly Economic Report	23-Apr			
01/26/2011 09:30	UK	Bank of England Minutes	23-Apr			
01/26/2011 09:30	UK	BBA Loans for House Purchase	DEC	29250	--	29991
01/26/2011 12:00	US	MBA Mortgage Applications	21-Jan	--	--	5.00%

Daily Market Report

01/26/2011 14:00	US	Fed's Open Market Committee Meets on	26-Jan			
01/26/2011 15:00	US	New Home Sales	DEC	300K	--	290K
01/26/2011 15:00	US	New Home Sales MoM	DEC	3.50%	--	5.50%
01/26/2011 15:30	US	DOE U.S. Crude Oil Inventories	21-Jan	--	--	2617K
01/26/2011 15:30	US	DOE Cushing OK Crude Inventory	21-Jan	--	--	-571K
01/26/2011 15:30	US	DOE U.S. Distillate Inventory	21-Jan	--	--	1038K
01/26/2011 15:30	US	DOE U.S. Gasoline Inventories	21-Jan	--	--	4443K
01/26/2011 15:30	US	DOE U.S. Refinery Utilization	21-Jan	--	--	-3.40%
01/26/2011 15:30	US	DOE Crude Oil Implied Demand	21-Jan	--	--	13830
01/26/2011 15:30	US	DOE Distillate Implied Demand	21-Jan	--	--	4445.7
01/26/2011 15:30	US	DOE Gasoline Implied Demand	21-Jan	--	--	8974.4
01/26/2011 15:45	AS	ECB's Nowotny Speaks in Vienna	23-Apr			
01/26/2011 16:00	EC	ECB's Stark Speaks in Kiel, Germany	23-Apr			
01/26/2011 18:00	US	U.S. to Sell USD35 Bln 5-Year Notes	23-Apr			
01/26/2011 19:15	US	FOMC Rate Decision	26-Jan	0.25%	--	0.25%
01/26/2011 23:50	JN	Merchnds Trade Balance Total	DEC	¥465.0B	--	¥162.8B
01/26/2011 23:50	JN	Japan Buying Foreign Bonds	21-Jan	--	--	¥766.5B
01/26/2011 23:50	JN	Japan Buying Foreign Stocks	21-Jan	--	--	-¥24.7B
01/26/2011 23:50	JN	Foreign Buying Japan Bonds	21-Jan	--	--	¥19.0B
01/26/2011 23:50	JN	Foreign Buying Japan Stocks	21-Jan	--	--	¥325.4B
01/26/2011 23:50	JN	Adjusted Merchnds Trade Bal.	DEC	¥523.9B	--	¥425.7B
01/26/2011 23:50	JN	Merchnds Trade Exports YoY	DEC	9.3	--	9.1
01/26/2011 23:50	JN	Merchnds Trade Imports YoY	DEC	12	--	14.2
01/27/2011 00:01	UK	Hometrack Housing Survey (MoM)	JAN	--	--	-0.40%
01/27/2011 00:01	UK	Hometrack Housing Survey (YoY)	JAN	--	--	-1.60%
01/27/2011 10:00	EC	Business Climate Indicator	JAN	1.34	--	1.31
01/27/2011 10:00	EC	Euro-Zone Consumer Confidence	JAN F	-11.1	--	-11.4
01/27/2011 10:00	EC	Euro-Zone Economic Confidence	JAN	106.7	--	106.2
01/27/2011 10:00	EC	Euro-Zone Indust. Confidence	JAN	5	--	4
01/27/2011 10:00	EC	Euro-zone Services Confidence	JAN	10	--	9.8
01/27/2011 10:30	EC	ECB's Bini Smaghi Speaks in Bologna	23-Apr			
01/27/2011 11:00	UK	CBI Reported Sales	JAN	38	--	56
01/27/2011	GE	Consumer Price Index (MoM)	JAN P	-0.30%	--	--
01/27/2011	GE	Consumer Price Index (YoY)	JAN P	2.00%	--	--
01/27/2011	GE	CPI - Brandenburg (MoM)	JAN	--	--	1.10%
01/27/2011	GE	CPI - Brandenburg (YoY)	JAN	--	--	1.40%
01/27/2011	GE	CPI - Bavaria (MoM)	JAN	--	--	0.80%
01/27/2011	GE	CPI - Bavaria (YoY)	JAN	--	--	1.60%
01/27/2011	GE	CPI - Baden Wuerttemberg (MoM)	JAN	--	--	0.90%
01/27/2011	GE	CPI - Baden Wuerttemberg (YoY)	JAN	--	--	1.90%
01/27/2011	GE	CPI - Hesse (MoM)	JAN	--	--	1.10%
01/27/2011	GE	CPI - Hesse (YoY)	JAN	--	--	1.50%
01/27/2011	GE	CPI - EU Harmonised (MoM)	JAN P	-0.30%	--	--
01/27/2011	GE	CPI - EU Harmonised (YoY)	JAN P	2.20%	--	--

Daily Market Report

01/27/2011	GE	CPI - North Rhine-West. (MoM)	JAN	--	--	1.10%
01/27/2011	GE	CPI - North Rhine-West. (YoY)	JAN	--	--	1.80%
01/27/2011	GE	CPI - Saxony (MoM)	JAN	--	--	1.20%
01/27/2011	GE	CPI - Saxony (YoY)	JAN	--	--	1.80%
01/27/2011 13:00	SP	ECB's Gonzalez-Paramo Speaks in Madrid	23-Apr			
01/27/2011 13:30	US	Chicago Fed Nat Activity Index	DEC	0.31	--	-0.46
01/27/2011 13:30	US	Durable Goods Orders	DEC	1.50%	--	-1.30%
01/27/2011 13:30	US	Durables Ex Transportation	DEC	0.90%	--	2.40%
01/27/2011 13:30	US	Cap Goods Orders Nondef Ex Air	DEC	1.70%	--	2.60%
01/27/2011 13:30	US	Cap Goods Ship Nondef Ex Air	DEC	--	--	1.00%
01/27/2011 13:30	US	Initial Jobless Claims	22-Jan	409K	--	404K
01/27/2011 13:30	US	Continuing Claims	15-Jan	3880K	--	3861K
01/27/2011 15:00	US	Pending Home Sales MoM	DEC	1.00%	--	3.50%
01/27/2011 15:00	US	Pending Home Sales YoY	DEC	--	--	-2.40%
01/27/2011 15:30	US	EIA Natural Gas Storage Change	21-Jan	--	--	-243
01/27/2011 15:45	US	Fed Nominee Diamond Speaks at MIT	23-Apr			
01/27/2011 16:00	US	U.S. Fed to Purchase USD4-6 Bln	23-Apr			
01/27/2011 18:00	US	U.S. to Sell USD29 Bln 7-Year Notes	23-Apr			
01/27/2011 18:00	EC	ECB's Tumpel Gugerell Speaks in Mainz,	23-Apr			
01/27/2011 23:30	JN	Job-To-Applicant Ratio	DEC	0.58	--	0.57
01/27/2011 23:30	JN	Overall Hhold Spending (YoY)	DEC	-0.60%	--	-0.40%
01/27/2011 23:30	JN	Tokyo CPI YoY	JAN	-0.20%	--	-0.20%
01/27/2011 23:30	JN	Jobless Rate	DEC	5.10%	--	5.10%
01/27/2011 23:30	JN	Tokyo CPI Ex-Fresh Food YoY	JAN	-0.30%	--	-0.40%
01/27/2011 23:30	JN	Tokyo CPI Ex Food, Energy YoY	JAN	-0.50%	--	-0.50%
01/27/2011 23:30	JN	Natl CPI YoY	DEC	-0.10%	--	0.10%
01/27/2011 23:30	JN	Natl CPI Ex-Fresh Food YoY	DEC	-0.50%	--	--
01/27/2011 23:30	JN	Natl CPI Ex Food, Energy YoY	DEC	-0.80%	--	-0.90%
01/27/2011 23:50	JN	Retail Trade MoM SA	DEC	-1.40%	--	1.90%
01/27/2011 23:50	JN	Retail Trade YoY	DEC	0.60%	--	1.30%
01/27/2011 23:50	JN	Large Retailers' Sales	DEC	-0.50%	--	0.20%
01/28/2011 01:35	CH	MNI Business Condition Survey	JAN	--	--	62.08
01/28/2011 09:00	EC	Euro-Zone M3 s.a. 3 mth ave.	DEC	1.60%	--	1.30%
01/28/2011 09:00	EC	Euro-Zone M3 s.a. (YoY)	DEC	1.90%	--	1.90%
01/28/2011	PO	Bank of Portugal Publishes Bank Survey on	28-Jan			
01/28/2011 13:30	US	Employment Cost Index	4Q	0.50%	--	0.40%
01/28/2011 13:30	US	GDP QoQ (Annualized)	4Q A	3.50%	--	2.60%
01/28/2011 13:30	US	GDP Price Index	4Q A	1.70%	--	2.10%
01/28/2011 13:30	US	Core PCE QoQ	4Q A	0.40%	--	0.50%
01/28/2011 13:30	US	Personal Consumption	4Q A	4.00%	--	2.40%
01/28/2011 14:55	US	U. of Michigan Confidence	JAN F	73.1	--	72.7
01/28/2011 16:00	US	U.S. Fed to Purchase USD7-9 Bln	23-Apr			

Daily Market Report

Company Name	Company Ticker	Date	Time	Actual	Estimate	Surprise
Halliburton Co	HAL US	1/24/2011	11:57	0.68	0.633	7.42%
Sealed Air Corp	SEE US	1/24/2011	12:31	0.46	0.454	1.32%
McDonald's Corp	MCD US	1/24/2011	12:58	1.15	1.155	-0.43%
CSX Corp	CSX US	1/24/2011	21:02	1.14	1.093	4.30%
Amgen Inc	AMGN US	1/24/2011	21:08	1.17	1.105	5.88%
American Express Co	AXP US	1/24/2011	21:09	0.94	0.965	-2.59%
Zions Bancorporation	ZION US	1/24/2011	21:10	-0.62	-0.356	-74.16%
Texas Instruments Inc	TXN US	1/24/2011	21:30	0.64	0.633	1.11%
Jacobs Engineering Group Inc	JEC US	1/25/2011	3:04	0.56	0.588	-4.76%
Baker Hughes Inc	BHI US	1/25/2011	11:00	0.84	0.652	28.83%
El du Pont de Nemours & Co	DD US	1/25/2011	11:00	0.5	0.313	59.74%
Travelers Cos Inc/The	TRV US	1/25/2011	11:30	1.89	1.662	13.72%
Verizon Communications Inc	VZ US	1/25/2011	11:30	0.54	0.546	-1.10%
KeyCorp	KEY US	1/25/2011	11:33	0.33	0.137	140.88%
Harley-Davidson Inc	HOG US	1/25/2011	12:00	-0.18	-0.298	39.60%
Coach Inc	COH US	1/25/2011	12:00	1	0.973	2.77%
Regions Financial Corp	RF US	1/25/2011	12:00	0.03	-0.13	123.08%
Quest Diagnostics Inc/DE	DGX US	1/25/2011	12:00	0.98	0.912	7.46%
EMC Corp/Massachusetts	EMC US	1/25/2011	12:00	0.42	0.411	2.19%
Tellabs Inc	TLAB US	1/25/2011	12:00	11	0.083	-100%
Waters Corp	WAT US	1/25/2011	12:00	1.38	1.313	5.10%
Corning Inc	GLW US	1/25/2011	12:10	0.46	0.472	-2.54%
3M Co	MMM US	1/25/2011	12:30	1.28	1.268	0.95%
Kimberly-Clark Corp	KMB US	1/25/2011	12:30	1.2	1.151	4.26%
NextEra Energy Inc	NEE US	1/25/2011	12:33	0.8	0.88	-9.09%
United States Steel Corp	X US	1/25/2011	12:34	-1.22	-1.151	-5.99%
Johnson & Johnson	JNJ US	1/25/2011	12:45	1.03	1.033	-0.29%
WW Grainger Inc	GWW US	1/25/2011	13:01	1.79	1.676	6.80%
Sherwin-Williams Co/The	SHW US	1/25/2011	13:01	0.76	0.658	15.50%
Peabody Energy Corp	BTU US	1/25/2011	13:02	0.85	0.741	14.71%
AK Steel Holding Corp	AKS US	1/25/2011	13:30	-0.49	-0.631	22.35%
Norfolk Southern Corp	NSC US	1/25/2011	20:41	1	1.048	-4.58%
Stryker Corp	SYK US	1/25/2011	21:00	0.93	0.908	2.42%
Molex Inc	MOLX US	1/25/2011	21:00	0.46	0.422	9.00%
Total System Services Inc	TSS US	1/25/2011	21:00	0.24	0.242	-0.83%
DeVry Inc	DV US	1/25/2011	21:01	1.25	1.186	5.40%
CA Inc	CA US	1/25/2011	21:02	0.51	0.495	3.03%
Juniper Networks Inc	JNPR US	1/25/2011	21:04	0.42	0.368	14.13%
Gilead Sciences Inc	GILD US	1/25/2011	21:05	0.95	0.944	0.64%

Daily Market Report

Yahoo! Inc	YHOO US	1/25/2011	21:05	0.26	0.221	17.65%
Altera Corp	ALTR US	1/25/2011	21:15	0.72	0.71	1.41%
Boston Properties Inc	BXP US	1/25/2011	22:58	1.14	1.104	3.26%
WellPoint Inc	WLP US	1/26/2011	11:00	1.33	1.223	8.75%
Praxair Inc	PX US	1/26/2011	11:02	1.25	1.231	1.54%
Textron Inc	TXT US	1/26/2011	11:30	0.33	0.261	26.44%
Legg Mason Inc	LM US	1/26/2011	11:59	0.41	0.456	-10.09%
United Technologies Corp	UTX US	1/26/2011	11:59	1.31	1.293	1.31%
Rockwell Automation Inc	ROK US	1/26/2011	12:00	1.04	0.884	17.65%
Valero Energy Corp	VLO US	1/26/2011	12:00	0.4	0.341	17.30%
Xerox Corp	XRX US	1/26/2011	12:00	0.29	0.284	2.11%
McCormick & Co Inc/MD	MKC US	1/26/2011	12:00	0.99	0.956	3.56%
Hess Corp	HES US	1/26/2011	12:09	1.21	1.234	-1.94%
MeadWestvaco Corp	MWV US	1/26/2011	12:15	0.41	0.39	5.13%
St Jude Medical Inc	STJ US	1/26/2011	12:30	0.75	0.737	1.76%
Southern Co	SO US	1/26/2011	12:30	0.18	0.181	-0.55%
Boeing Co/The	BA US	1/26/2011	12:30	1.11	1.112	-0.18%
Automatic Data Processing Inc	ADP US	1/26/2011	12:30	0.62	0.61	1.64%
General Dynamics Corp	GD US	1/26/2011	12:30	1.91	1.848	3.35%
Occidental Petroleum Corp	OXY US	1/26/2011	12:35	1.58	1.529	3.34%
Allegheny Technologies Inc	ATI US	1/26/2011	12:40	0.28	0.291	-3.78%
Abbott Laboratories	ABT US	1/26/2011	12:44	1.3	1.291	0.70%
Exelon Corp	EXC US	1/26/2011	13:00	0.96	0.915	4.92%
ConocoPhillips	COP US	1/26/2011	13:30	1.32	1.309	0.84%
	QCOM					
QUALCOMM Inc	US	1/26/2011	21:00	0.82	0.718	14.21%
Varian Medical Systems Inc	VAR US	1/26/2011	21:00	0.8	0.729	9.74%
LSI Corp	LSI US	1/26/2011	21:01	0.14	0.128	9.38%
Robert Half International Inc	RHI US	1/26/2011	21:02	0.17	0.16	6.25%
Owens-Illinois Inc	OI US	1/26/2011	21:02	0.45	0.468	-3.85%
Harris Corp	HRS US	1/26/2011	21:03	1.2	1.106	8.50%
Starbucks Corp	SBUX US	1/26/2011	21:03	0.45	0.392	14.80%
Symantec Corp	SYMC US	1/26/2011	21:04	0.35	0.333	5.11%
						-
E*Trade Financial Corp	ETFC US	1/26/2011	21:05	-0.11	0.042	361.91%
Citrix Systems Inc	CTXS US	1/26/2011	21:05	0.65	0.6	8.33%
NetFlix Inc	NFLX US	1/26/2011	21:10	0.87	0.711	22.36%
Motorola Mobility Holdings Inc	MMI US	1/26/2011	21:20	0.37	0.371	-0.27%
Noble Corp	NE US	1/26/2011	22:00	0.39	0.315	23.81%
Murphy Oil Corp	MUR US	1/26/2011	22:06	0.9	1.009	-10.80%
Teradyne Inc	TER US	1/26/2011	23:30	0.37	0.245	51.02%
Eaton Corp	ETN US	1/27/2011	Bef-mkt		1.671	

Daily Market Report

Lockheed Martin Corp	LMT US	1/27/2011	Bef-mkt	2.097
L-3 Communications Holdings Inc	LLL US	1/27/2011	Bef-mkt	2.312
Procter & Gamble Co/The	PG US	1/27/2011	Bef-mkt	1.094
Mead Johnson Nutrition Co	MJN US	1/27/2011	Bef-mkt	0.558
Tyco International Ltd	TYC US	1/27/2011	Bef-mkt	0.677
Time Warner Cable Inc	TWC US	1/27/2011	11:00	1.006
Ball Corp	BLL US	1/27/2011	11:00	0.919
Danaher Corp	DHR US	1/27/2011	11:00	0.663
Eli Lilly & Co	LLY US	1/27/2011	11:30	1.096
Newell Rubbermaid Inc	NWL US	1/27/2011	11:30	0.319
Xcel Energy Inc	XEL US	1/27/2011	12:00	0.309
Raytheon Co	RTN US	1/27/2011	12:00	1.16
Colgate-Palmolive Co	CL US	1/27/2011	12:00	1.231
Altria Group Inc	MO US	1/27/2011	12:00	0.444
EQT Corp	EQT US	1/27/2011	12:00	0.397
Motorola Solutions Inc	MSI US	1/27/2011	12:00	1.071
Stanley Black & Decker Inc	SWK US	1/27/2011	12:00	0.91
Baxter International Inc	BAX US	1/27/2011	12:00	1.102
Consol Energy Inc	CNX US	1/27/2011	12:00	0.539
Zimmer Holdings Inc	ZMH US	1/27/2011	12:00	1.189
DR Horton Inc	DHI US	1/27/2011	12:00	-0.033
Caterpillar Inc	CAT US	1/27/2011	12:30	1.284
Bristol-Myers Squibb Co	BMJ US	1/27/2011	12:30	0.475
Celgene Corp	CELG US	1/27/2011	12:30	0.733
Invesco Ltd	IVZ US	1/27/2011	12:30	0.398
AT&T Inc	T US	1/27/2011	13:00	0.539
Janus Capital Group Inc	JNS US	1/27/2011	13:00	0.208
Franklin Resources Inc	BEN US	1/27/2011	13:30	1.911
Nucor Corp	NUE US	1/27/2011	14:00	-0.107
VeriSign Inc	VRSN US	1/27/2011	20:05	0.304
KLA-Tencor Corp	KLAC US	1/27/2011	21:15	1.053
Compuware Corp	CPWR US	1/27/2011	Aft-mkt	0.16
Chubb Corp	CB US	1/27/2011	Aft-mkt	1.573
SanDisk Corp	SNDK US	1/27/2011	Aft-mkt	1.09
Microchip Technology Inc	MCHP US	1/27/2011	Aft-mkt	0.565
Amazon.com Inc	AMZN US	1/27/2011	Aft-mkt	0.882
	MWW			
Monster Worldwide Inc	US	1/27/2011	Aft-mkt	0.064
Microsoft Corp	MSFT US	1/27/2011	Aft-mkt	0.684
Federated Investors Inc	FII US	1/27/2011	Aft-mkt	0.425
Helmerich & Payne Inc	HP US	1/27/2011		0.818
Precision Castparts Corp	PCP US	1/27/2011		1.798

Daily Market Report

Honeywell International Inc	HON US	1/28/2011	Bef-mkt	0.855
Ford Motor Co	F US	1/28/2011	12:00	0.482
Dover Corp	DOV US	1/28/2011	12:00	0.817
Dominion Resources Inc/VA	D US	1/28/2011	12:30	0.662
T Rowe Price Group Inc	TROW US	1/28/2011		0.683
American Electric Power Co Inc	AEP US	1/28/2011		0.389
Chevron Corp	CVX US	1/28/2011		2.403
Roper Industries Inc	ROP US	1/31/2011	Bef-mkt	0.993
Gannett Co Inc	GCI US	1/31/2011	Bef-mkt	0.812
Illinois Tool Works Inc	ITW US	1/31/2011	13:00	0.805
McKesson Corp	MCK US	1/31/2011	21:00	1.104
Eastman Chemical Co	EMN US	1/31/2011	22:00	1.494
CR Bard Inc	BCR US	1/31/2011	Aft-mkt	1.485
Plum Creek Timber Co Inc	PCL US	1/31/2011	Aft-mkt	0.447
Anadarko Petroleum Corp	APC US	1/31/2011	Aft-mkt	0.226
Exxon Mobil Corp	XOM US	1/31/2011		1.631
Novellus Systems Inc	NVLS US	1/31/2011		0.929
Biogen Idec Inc	BIIB US	2/1/2011	Bef-mkt	1.225
Emerson Electric Co	EMR US	2/1/2011	Bef-mkt	0.651
McGraw-Hill Cos Inc/The	MHP US	2/1/2011	Bef-mkt	0.535
Archer-Daniels-Midland Co	ADM US	2/1/2011	Bef-mkt	0.792
NiSource Inc	NI US	2/1/2011	Bef-mkt	0.342
Bemis Co Inc	BMS US	2/1/2011	Bef-mkt	0.506
United Parcel Service Inc	UPS US	2/1/2011	12:45	1.052
Western Union Co/The	WU US	2/1/2011	21:00	0.35
CH Robinson Worldwide Inc	CHRW US	2/1/2011	21:15	0.624
Broadcom Corp	BRCM US	2/1/2011	Aft-mkt	0.727
Leggett & Platt Inc	LEG US	2/1/2011	Aft-mkt	0.227
Electronic Arts Inc	ERTS US	2/1/2011	Aft-mkt	0.579
Boston Scientific Corp	BSX US	2/1/2011	Aft-mkt	0.098
Aflac Inc	AFL US	2/1/2011	Aft-mkt	1.352
Massey Energy Co	MEE US	2/1/2011	Aft-mkt	-0.301
Lexmark International Inc	LXK US	2/1/2011		1.11
Sysco Corp	SYU US	2/1/2011		0.464
MEMC Electronic Materials Inc	WFR US	2/1/2011		0.336
Pfizer Inc	PFE US	2/1/2011		0.459
PACCAR Inc	PCAR US	2/1/2011		0.466
Cummins Inc	CMI US	2/1/2011		1.703
Time Warner Inc	TWX US	2/2/2011	Bef-mkt	0.622
Hospira Inc	HSP US	2/2/2011	Bef-mkt	0.939
Wisconsin Energy Corp	WEC US	2/2/2011	Bef-mkt	1.011
Thermo Fisher Scientific Inc	TMO US	2/2/2011	Bef-mkt	0.949

Daily Market Report

Mattel Inc	MAT US	2/2/2011	11:00	0.858
Whirlpool Corp	WHR US	2/2/2011	11:00	2.298
NASDAQ OMX Group Inc/The	NDAQ US	2/2/2011	12:00	0.505
Genworth Financial Inc	GNW US	2/2/2011	12:00	0.178
Avery Dennison Corp	AVY US	2/2/2011	13:30	0.97
News Corp	NWSA US	2/2/2011	21:00	0.288
Unum Group	UNM US	2/2/2011	21:00	0.685
Yum! Brands Inc	YUM US	2/2/2011	Aft-mkt	0.598
Dun & Bradstreet Corp	DNB US	2/2/2011	Aft-mkt	1.849
Hartford Financial Services Group Inc	HIG US	2/2/2011	Aft-mkt	0.853
AvalonBay Communities Inc	AVB US	2/2/2011	Aft-mkt	1.01
Ameriprise Financial Inc	AMP US	2/2/2011	Aft-mkt	1.309
Visa Inc	V US	2/2/2011	Aft-mkt	1.2
Vulcan Materials Co	VMC US	2/2/2011	Aft-mkt	-0.179
Lincoln National Corp	LNC US	2/2/2011	Aft-mkt	0.885
Equity Residential	EQR US	2/2/2011	Aft-mkt	0.582
ACE Ltd	ACE US	2/2/2011	Aft-mkt	1.844
Tesoro Corp	TSO US	2/2/2011	Aft-mkt	-0.061
Cincinnati Financial Corp	CINF US	2/2/2011	Aft-mkt	0.348
Assurant Inc	AIZ US	2/2/2011	Aft-mkt	1.026
Allergan Inc/United States	AGN US	2/2/2011		0.887
Marathon Oil Corp	MRO US	2/2/2011		0.955
Hershey Co/The	HSY US	2/2/2011		0.611
Cameron International Corp	CAM US	2/2/2011		0.67
BMC Software Inc	BMC US	2/2/2011		0.8
Snap-On Inc	SNA US	2/3/2011	Bef-mkt	0.877
Moody's Corp	MCO US	2/3/2011	Bef-mkt	0.485
CME Group Inc	CME US	2/3/2011	Bef-mkt	3.804
Starwood Hotels & Resorts Worldwide Inc	HOT US	2/3/2011	Bef-mkt	0.387
Cardinal Health Inc	CAH US	2/3/2011	Bef-mkt	0.613
National Oilwell Varco Inc	NOV US	2/3/2011	Bef-mkt	0.957
International Paper Co	IP US	2/3/2011	Bef-mkt	0.655
Mastercard Inc	MA US	2/3/2011	Bef-mkt	3.046
Spectra Energy Corp	SE US	2/3/2011	Bef-mkt	0.399
Goodrich Corp	GR US	2/3/2011	Bef-mkt	1.049
Viacom Inc	VIA/B US	2/3/2011	Bef-mkt	0.999
CIGNA Corp	CI US	2/3/2011	11:30	1.012
Dow Chemical Co/The	DOW US	2/3/2011	11:30	0.346
ITT Corp	ITT US	2/3/2011	12:00	1.255
Kellogg Co	K US	2/3/2011	13:00	0.507

Daily Market Report

Harman International Industries Inc	HAR US	2/3/2011	13:00	0.52
Ryder System Inc	R US	2/3/2011	13:00	0.626
CareFusion Corp	CFN US	2/3/2011	Aft-mkt	0.374
Sunoco Inc	SUN US	2/3/2011	Aft-mkt	0.064
PerkinElmer Inc	PKI US	2/3/2011	Aft-mkt	0.414
JDS Uniphase Corp	JDSU US	2/3/2011	Aft-mkt	0.194
Fiserv Inc	FISV US	2/3/2011	Aft-mkt	1.07
Life Technologies Corp	LIFE US	2/3/2011	Aft-mkt	0.863
CVS Caremark Corp	CVS US	2/3/2011		0.789
Stericycle Inc	SRCL US	2/3/2011		0.638
Reynolds American Inc	RAI US	2/3/2011		0.614
Diamond Offshore Drilling Inc	DO US	2/3/2011		1.458
AutoNation Inc	AN US	2/3/2011		0.35
Merck & Co Inc	MRK US	2/3/2011		0.83
Estee Lauder Cos Inc/The	EL US	2/3/2011		1.439
CB Richard Ellis Group Inc	CBG US	2/3/2011		0.324
AmerisourceBergen Corp	ABC US	2/4/2011	Bef-mkt	0.533
Apartment Investment & Management Co	AIV US	2/4/2011	Bef-mkt	0.355
Pulte Group Inc	PHM US	2/4/2011	Bef-mkt	-0.108
Simon Property Group Inc	SPG US	2/4/2011	Bef-mkt	1.743
TECO Energy Inc	TE US	2/4/2011	Bef-mkt	0.251
AON Corp	AON US	2/4/2011	Bef-mkt	0.815
Weyerhaeuser Co	WY US	2/4/2011	Bef-mkt	0.053
Fortune Brands Inc	FO US	2/4/2011	Bef-mkt	0.584
Aetna Inc	AET US	2/4/2011	11:00	0.615
Constellation Energy Group Inc	CEG US	2/4/2011		0.577
Clorox Co	CLX US	2/4/2011		0.609
PPL Corp	PPL US	2/4/2011		0.569
Tyson Foods Inc	TSN US	2/4/2011		0.616
Allegheny Energy Inc	AYE US	2/4/2011		0.475

Company Name	Company Ticker	Date	Time	Actual	Estimate	Surprise
Koninklijke Philips Electronics NV	PHIA NA	1/24/2011	6:00	1.629	1.828	-10.89%
Wincor Nixdorf AG	WIN GR	1/24/2011	6:30	1.072	1.031	3.98%
STMicroelectronics NV	STM IM	1/24/2011	22:15	0.912	0.526	73.38%
Siemens AG	SIE GR	1/25/2011	6:00	1.931	1.684	14.67%
Telefonaktiebolaget LM	ERICB SS	1/25/2011	6:30	5.082	5.351	-5.03%

Daily Market Report

Ericsson

Coloplast A/S	COLOB DC	1/25/2011	7:00	9.645	9.473	1.82%
Misys PLC	MSY LN	1/25/2011	7:00	0.029	0.057	-49.12%
Castellum AB	CAST SS	1/25/2011	10:00	5.056	5.691	-11.16%
Lonza Group AG	LONN VX	1/26/2011	6:00	5.55	5.44	2.02%
SAP AG	SAP GR	1/26/2011	6:19	2.268	2.182	3.94%
Koninklijke KPN NV	KPN NA	1/26/2011	6:30	1.147	1.146	0.09%
Kone OYJ	KNEBV FH	1/26/2011	10:30	2.099	2.074	1.21%
Getinge AB	GETIB SS	1/26/2011	11:00	9.554	9.398	1.66%
Logitech International SA	LOGN VX	1/27/2011	3:00	0.367	0.371	-1.08%
Novartis AG	NOVN VX	1/27/2011	6:30	5.176	5.196	-0.38%
Hennes & Mauritz AB	HMB SS	1/27/2011	7:00	11.287	11.571	-2.45%
British Sky Broadcasting Group PLC	BSY LN	1/27/2011	7:00	0.2	0.188	6.38%
AstraZeneca PLC	AZN LN	1/27/2011	7:00	6.705	6.611	1.42%
Britvic PLC	BVIC LN	1/27/2011	7:00			
Banco de Sabadell SA	SAB SM	1/27/2011	7:30	0.156	0.226	-30.97%
Nokia OYJ	NOK1V FH	1/27/2011	11:00		0.555	
Svenska Cellulosa AB	SCAB SS	1/27/2011	11:00		8.814	
Fiat SpA	F IM	1/27/2011			0.264	
Software AG	SOW GR	1/27/2011		6.189	6.314	-1.98%
Wartsila OYJ	WRT1V FH	1/28/2011	6:30		3.613	
Banco de Valencia SA	BVA SM	1/28/2011			0.235	
Zardoya Otis SA	ZOT SM	1/28/2011			0.589	
Ryanair Holdings PLC	RYA ID	1/31/2011			-0.015	
Banco Espirito Santo SA	BES PL	1/31/2011			0.419	
QIAGEN NV	QGEN US	1/31/2011			0.249	
Enagas	ENG SM	2/1/2011	Bef-mkt		1.393	
Infineon Technologies AG	IFX GR	2/1/2011	6:30		0.114	
BP PLC	BP/ LN	2/1/2011	7:00		1.13	
Autonomy Corp PLC	AU/ LN	2/1/2011	7:00		1.103	
SKF AB	SKFB SS	2/1/2011	11:00		11.659	
ARM Holdings PLC	ARM LN	2/1/2011	12:00		0.087	
Nordea Bank AB	NDA SS	2/2/2011	6:00		0.631	
Novo Nordisk A/S	NOVOB DC	2/2/2011	7:00		24.59	
Fortum OYJ	FUM1V FH	2/2/2011	7:00		1.608	
Roche Holding AG	ROG VX	2/2/2011	7:00		12.892	
Sandvik AB	SAND SS	2/2/2011	7:00		5.555	
Outokumpu OYJ	OUT1V FH	2/2/2011	7:00		-0.298	
Electrolux AB	ELUXB SS	2/2/2011	7:00		16.094	
UPM-Kymmene OYJ	UPM1V FH	2/2/2011	7:30		0.953	
Scania AB	SCVB SS	2/2/2011	8:30		11.015	

Daily Market Report

Banco Bilbao Vizcaya Argentaria SA	BBVA SM	2/2/2011	8:30	1.166
Atlas Copco AB	ATCOA SS	2/2/2011	11:00	8.138
Banco Comercial Portugues SA	BCP PL	2/2/2011	17:00	0.054
Holmen AB	HOLMB SS	2/2/2011		8.578
Mapfre SA	MAP SM	2/2/2011		0.307
Banco Santander SA	SAN SM	2/3/2011	Bef-mkt	0.987
Deutsche Bank AG	DBK GR	2/3/2011	Bef-mkt	3.88
Kesko OYJ	KESBV FH	2/3/2011	6:00	1.762
TeliaSonera AB	TLSN SS	2/3/2011	6:15	4.652
Muenchener Rueckversicherungs AG	MUV2 GR	2/3/2011	6:45	13.001
Konecranes OYJ	KCR1V FH	2/3/2011	7:00	1.258
Unilever PLC	ULVR LN	2/3/2011	7:00	1.488
Royal Dutch Shell PLC	RDSA LN	2/3/2011	7:00	3.086
Rautaruukki OYJ	RTRKS FH	2/3/2011	7:00	-0.016
Unilever NV	UNA NA	2/3/2011	7:00	1.488
BT Group PLC	BT/A LN	2/3/2011	7:00	
Metso OYJ	MEO1V FH	2/3/2011	10:00	1.897
GlaxoSmithKline PLC	GSK LN	2/3/2011	12:00	0.87
TUI Travel PLC	TT/ LN	2/3/2011		
LVMH Moet Hennessy Louis Vuitton SA	MC FP	2/4/2011	Bef-mkt	5.31
YIT OYJ	YTY1V FH	2/4/2011	4:00	1.028
Volvo AB	VOLVB SS	2/4/2011	6:30	5.704
Skandinaviska Enskilda Banken AB	SEBA SS	2/4/2011	6:30	3.146
Neste Oil OYJ	NES1V FH	2/4/2011	7:00	0.448
Banco Popular Espanol SA	POP SM	2/4/2011	7:30	0.359

Disclaimer. This report was prepared and provided for information purposes only under the condition it will not form the sole basis for any investment decision. It does not constitute an offer and should not be considered as an offer, or solicitation of an offer, to buy or sell any securities. The information and opinions contained in this report have been received from sources believed to be reliable. While every reasonable effort has been made to obtain accurate information and verify it, IC RUSS-INVEST or its affiliates makes no warranty, express or implied, as to the accuracy, completeness or correctness of the information and opinions contained herein. All such information, opinions and forecasts are subject to further change without notice. The forward-looking statements in this report are subject to risks, uncertainties and other factors that could cause actual results to differ materially from those stated in such statements. Neither we nor any of our respective agents, employees or advisors intend or have any duty or obligation to supply, amend, update or revise any of the forward-looking statements contained in this report. IC RUSS-INVEST, its directors and employees may have a position in any of the securities mentioned in this report. The report cannot be used on the territory of the USA, Canada, Great Britain, Japan, neither it can be a subject of national regulation of the states mentioned.

INVESTMENT COMPANY IC RUSS-INVEST

www.russ-invest.com

Moscow

Telephone: +7(495) 363-93-80
Fax: +7(495) 363-93-90
E-mail: mail@russ-invest.com
Mailing address: 5-3/12 Nashchiokinsky
Pereulok, bldg. 4, 119019 Moscow

St-Petersburg

Telephone: +7(812) 337-55-37
Fax: +7(812) 337-55-37
E-mail: spb@russ-invest.com
Mailing address: 52 , Fontanky
Embankment, 190002 St-Petersburg

Samara

Telephone: +7 (846) 262-75-52
Fax: +7 (846) 262-75-52
E-mail: sam@russ-invest.com
Mailing address: 443067, Самара, ул.
агарина, 95

© 2007 | OJSC «IC RUSS-INVEST»
Licenses of FCFM №077-08757-000100 и №077-08755-001000
Licenses of FCFM №177-06310-100000 и №177-06312-010000
Licenses of FCFM №906